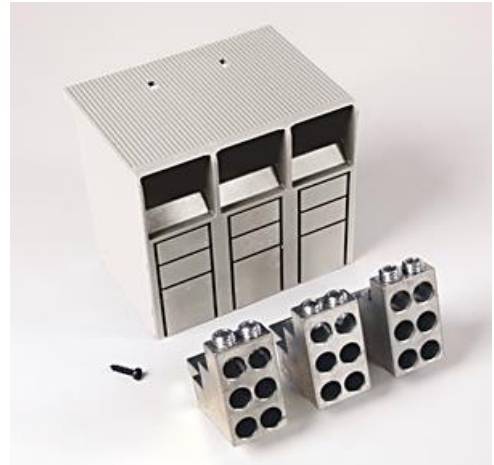


Product Details and Certifications

Cross Reference RA Part Number: PN-D13027

 **Product: 140G-H-MTL63**

Description: Frame-H, Multi Terminal Lug, Qty 3, 6x14-2(2.5-35)



Representative Photo Only (actual product may vary based on configuration selections)

CIRCUIT BREAKER DATA

Bulletin Number	Bulletin 140G/140MG
Frame Size	H frame
Rated Current(A)	125 A
Number of Poles	3 Poles

ACCESSORY ITEMS

Terminal Lugs	Frame-H, Multi Terminal Lug, Qty 3, 6x14-2(2.5-35)
---------------	--

CERTIFICATIONS AND APPROVALS

UL	UL489
CSA	CSA22.2 No. 5
IEC	IEC 60947-2
Certifications	UL Listed CSA Certified CE
For UL Certifications Directory:	http://database.ul.com/cgi-bin/XYV/template/LISEXT/1FRAME/index.htm

Molded Case Circuit Breakers

Accessories

Current Transformer for Neutral Current



Representative Photo

Rated Current [A]	Frame Size	Cat. No.
300	K ★	140G-K-NCTD30
400	K ★	140G-K-NCTD40
600	M ★	140G-M-NCTD60
800	M ★	140G-M-NCTD80
400...1600	N, NS	140G-N-NCTE16
1000...3200	R	140G-R-NCTE30

★ Order with connector (Cat. No. 140G-K-CC).

Mechanical Accessories

Terminal Lugs

Description	Frame Size	Cat. No. (Pkg. Qty. 3)	Cat. No. (Pkg. Qty. 4)
 Cu wire, MCCB only (1) 14...1/0 AWG or 2.5...70 mm ² Cu wire, MCP only (1) 14...1/0 AWG or 1.5...70 mm ² Multiple cable - Cu wire (6) 14...2 AWG or 2.5...35 mm ²	G	140G-G-TLC13	140G-G-TLC14
		140G-G-TLC13A	—
		140G-G-MTL63	140G-G-MTL64
		140G-H-TLC13	140G-H-TLC14
 Cu wire only (1) 14...1/0 AWG or 2.5...95 mm ² Multiple cable - Cu wire (6) 14...2 AWG or 2.5...35 mm ²	H	140G-H-TLC13	140G-H-TLC14
		140G-H-MTL63	140G-H-MTL64
 Al or Cu wire (1) 14...1/0 AWG or 2.5...50 mm ² Al or Cu wire (1) 4...300 MCM or 25...150 mm ² Cu wire only (1) 10...250 MCM or 6...185 mm ² Multiple cable - Cu wire (6) 12...2 AWG or 2.5...35 mm ²	I	140G-I-TLA13	140G-I-TLA14
		140G-I-TLA1A3	140G-I-TLA1A4
		140G-I-TLC13	140G-I-TLC14
		140G-I-MTL63	140G-I-MTL64
 Al or Cu wire (1) 14...1/0 AWG or 2.5...50 mm ² Al or Cu wire (1) 4...300 MCM or 25...150 mm ² Al or Cu wire (1) 6 (Al)/10 (Cu)...350 MCM or 2.5...185 mm ² (Al) Cu wire only (1) 10...350 MCM or 6...185 mm ² Multiple cable - Cu wire (6) 12...2 AWG or 2.5...35 mm ²	J	140G-J-TLA13	140G-J-TLA14
		140G-J-TLA1A3	140G-J-TLA1A4
		140G-J-TLA1B3	140G-J-TLA1B4
		140G-J-TLC13	140G-J-TLC14
		140G-J-MTL63	140G-J-MTL64
 Al or Cu wire (1) 250...500 MCM or 120...240 mm ² Al or Cu wire (2) 2/0...250 MCM or 95...120 mm ² Cu wire only (1) 250...500 MCM or 120...240 mm ² Cu wire only (2) 2/0...250 MCM or 95...120 mm ² Multiple cable - Cu wire (6) 6...1/0 AWG or 16...50 mm ²	K	140G-K-TLA13	140G-K-TLA14
		140G-K-TLA23	140G-K-TLA24
		140G-K-TLC13	140G-K-TLC14
		140G-K-TLC23	140G-K-TLC24
		140G-K-MTL63	140G-K-MTL64
 Al or Cu wire (2) 250...500 MCM or 120...240 mm ² Al or Cu wire (3) 2/0...400 MCM or 70...185 mm ² Cu wire only (2) 3/0...350 MCM or 85...185 mm ² Cu wire only (3) 2/0...350 MCM or 70...185 mm ²	M	140G-M-TLA23	140G-M-TLA24
		140G-M-TLA33	140G-M-TLA34
		140G-M-TLC23	140G-M-TLC24
		140G-M-TLC33	140G-M-TLC34
 Al or Cu wire (4) 4/0...500 MCM or 70...240 mm ² Cu wire only (4) 4/0...500 MCM or 70...240 mm ²	N, NS	140G-N-TLA43	140G-N-TLA44
		140G-N-TLC43	140G-N-TLC44
 Al or Cu wire (6) 1/0...750 MCM or 50...400 mm ² Cu wire only (6) 1/0...750 MCM or 50...400 mm ²	R	140G-R-TLA63	—
		140G-R-TLC63	—