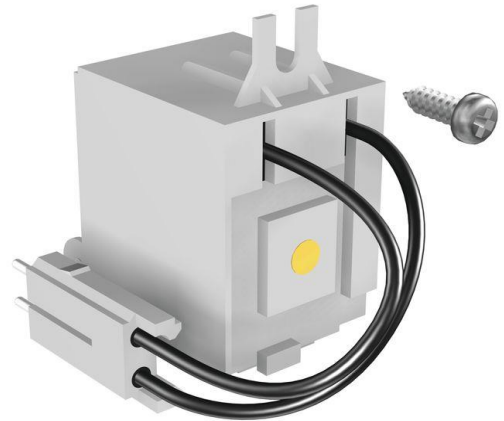


# Product Details and Certifications

**Cross Reference RA Part Number: PN-D13154**

**Product: 140G-K-UVJ**

Description: Frame K-M, Undervoltage Release, 24-30V AC/DC



Representative Photo Only (actual product may vary based on configuration selections)

---

## ***CIRCUIT BREAKER DATA***

Bulletin Number	Bulletin 140G/140MG
Frame Size	K-M frame


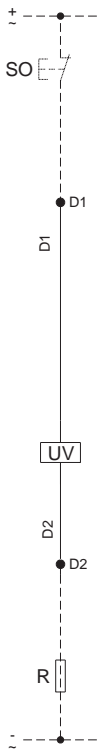

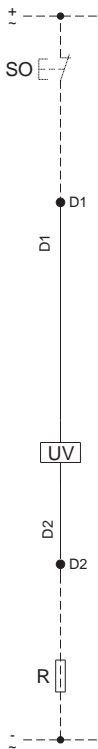

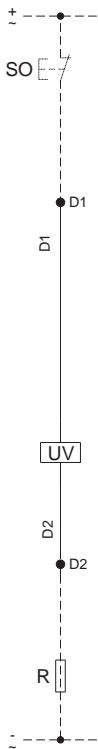
---

## ***ACCESSORY ITEMS***

Undervoltage Release	Frame K-M, Undervoltage Release, 24-30V AC/DC
----------------------	---

**Undervoltage Release (UVR)**


- Opens the MCCB when supply voltage drops below 0.7 of the UV relay, with a trip rating from 0.7...0.35.
- The MCCB can be reset when the supply voltage is higher than 0.85 of the relay rating.
- When the UV is de-energized it is not possible to close the main contacts on the MCCB.
- R Resistor is supplied with the MCCB when reset is required.

Description		Diagram	Frame Size	Cat. No.		
 Representative Photo	24...30V AC/DC		G, H, I, J	140G-G-UVJ		
	48V AC/DC			140G-G-UVR		
	60V AC/DC			140G-G-UVKY		
	110...127V AC/110...125V DC			140G-G-UVD		
	220...240V AC/220...250V DC			140G-G-UVA		
	380...440 V AC			140G-G-UVB		
 Representative Photo	480...525 V AC			K, M	140G-G-UVC	
	<b>24...30V AC/DC</b>				<b>140G-K-UVJ</b>	
	48V AC/DC				140G-K-UVR	
	60V AC/DC				140G-K-UVKY	
	110...127V AC/110...125V DC				140G-K-UVD	
	220...240V AC/220...250V DC				140G-K-UVA	
 Representative Photo	380...440 V AC				N, NS	140G-K-UVB
	480...525 V AC					140G-K-UVC
	24V AC/DC					140G-N-UVJ
	60V AC/DC					140G-N-UVKY
	110...120V AC/DC					140G-N-UVD
	220...240V AC/DC					140G-N-UVA
	<td>380...400V AC</td> <td rowspan="6">R</td> <td>140G-N-UVB</td>	380...400V AC			R	140G-N-UVB
		415...440V AC				140G-N-UVC
		24V DC				140G-R-UVJ
		60V AC/DC				140G-R-UVKY
		110...120V AC/DC				140G-R-UVD
		220...240V AC/DC				140G-R-UVA
380...400V AC	140G-R-UVB					
440...480V AC	140G-R-UVC					

**Residual Current Release Module (IEC Only)**

The residual current release module provides protection against low levels of earth (ground) fault currents. It continuously monitors the state of the insulation, with adjustability to provide protection from direct and indirect contact. Compliant with IEC 60947-2 annex B, IEC 61000 for protection against unwarranted tripping.

- Alarm & Trip indication
- 0.03 A with 0.0 s override
- Current adjustment: 0.5...10 A
- Time adjustment: 0.0...3 s
- Test

 Representative Photo	Frame Size	3-Pole Cat. No.	4-Pole Cat. No.
	G	140G-G-ELP1603	140G-G-ELP1604
	H	—	140G-H-ELP1604
	I	140G-I-ELP2503	140G-I-ELP2504
	J	—	140G-J-EP2504
K	—	140G-K-ELP	