



Instrument Transformers, Inc.

a division of GE Multilin



**Cross Reference RA Part Number 1411-125-102**

# Current Transformer Model 125

Window Diameter 6.31"

REGULATORY AGENCY APPROVALS

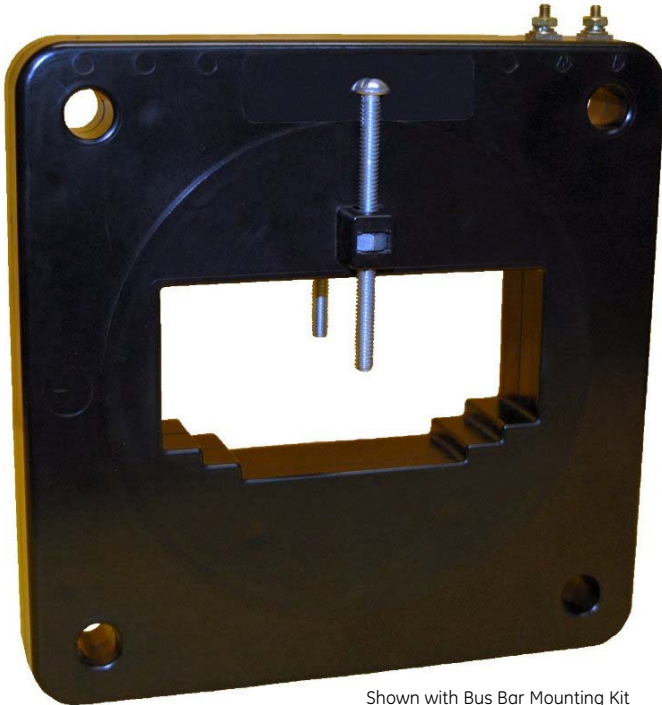


E93779



LR89403

Manufactured to meet the requirements of ANSI/IEEE C57.13. Classified by U.L. in accordance with IEC 44-1



Shown with Bus Bar Mounting Kit

**APPLICATION:**

Metering.

**FREQUENCY:**

50-400 Hz.

**INSULATION LEVEL:**

600 Volts, 10 kV BIL full wave.

Terminals are brass studs No. 8-32 with one flatwasher, lockwasher and regular nut.

Order mounting bracket kit 0221B00231 separately.

Order bus bar mounting kit 0221A26076 separately, factory installed.

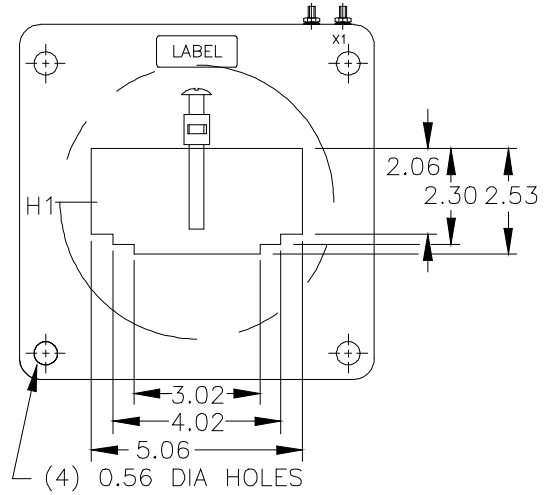
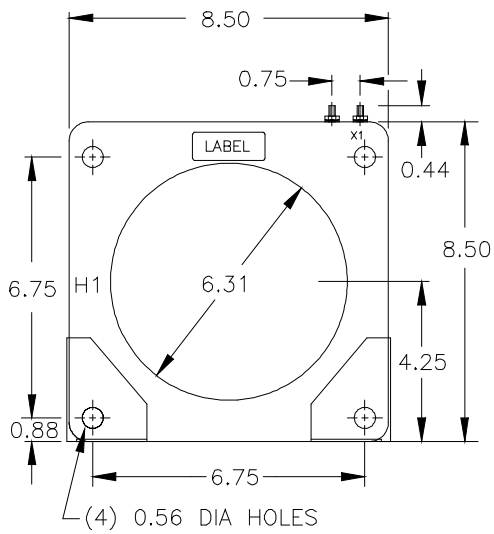
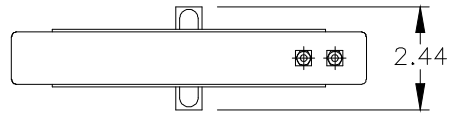
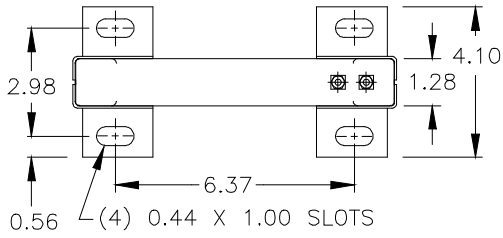
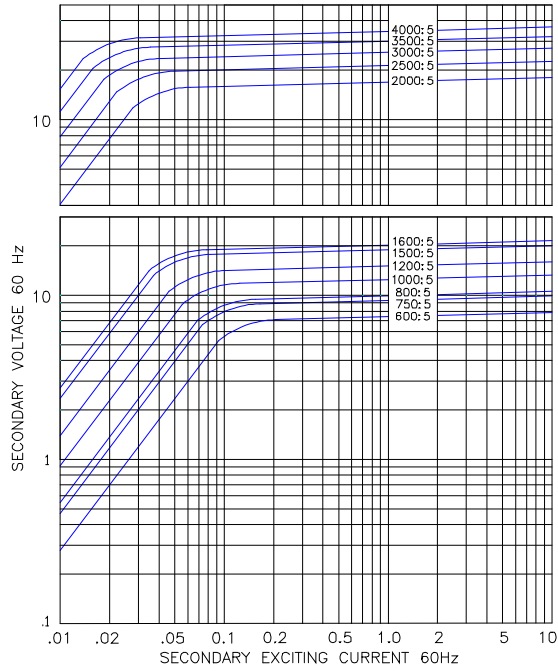
Approximate weight 3 lbs.

CATALOG NUMBER	CURRENT RATIO	ANSI METERING CLASS AT 60HZ					SECONDARY WINDING RESISTANCE (OHMS @ 75°C)	CONTINUOUS THERMAL RATING FACTOR	
		B0.1	B0.2	B0.5	B0.9	B1.8		@ 30°C	@ 55°C
125-601	600:5	0.3	0.3	1.2	1.2	2.4	0.071	1.5	1.33
125-751	750:5	0.3	0.3	0.6	1.2	2.4	0.143	1.5	1.33
125-801	800:5	0.3	0.3	0.6	1.2	2.4	0.116	1.5	1.33
<b>125-102</b>	<b>1000:5</b>	<b>0.3</b>	<b>0.3</b>	<b>0.3</b>	<b>0.6</b>	<b>1.2</b>	<b>0.187</b>	<b>1.5</b>	<b>1.33</b>
125-122	1200:5	0.3	0.3	0.3	0.6	1.2	0.224	1.5	1.33
125-152	1500:5	0.3	0.3	0.3	0.3	0.6	0.285	1.5	1.33
125-162	1600:5	0.3	0.3	0.3	0.3	0.6	0.304	1.5	1.33
125-202	2000:5	0.3	0.3	0.3	0.3	0.6	0.280	1.5	1.0
125-252	2500:5	0.3	0.3	0.3	0.3	0.6	0.351	1.33	1.0
125-302	3000:5	0.3	0.3	0.3	0.3	0.6	0.421	1.33	1.0
125-352	3500:5	0.3	0.3	0.3	0.3	0.3	0.491	1.33	1.0
125-402	4000:5	0.3	0.3	0.3	0.3	0.3	0.696	1.0	0.8



# Model 125

EXCITATION CURVE



Bus Bar Mounting Kit Shown

USA, Canada, Asia, Latin America

Tel: +1-800-547-8629

Fax: +1-905-201-2455

e-mail: [sales.multilin@ge.com](mailto:sales.multilin@ge.com)

Europe, Middle East, Africa

Tel: +34-94-485-88-00

Fax: +34-94-485-88-45

e-mail: [gmultilin.euro@ge.com](mailto:gmultilin.euro@ge.com)