



Current Transformer Models 600 & 601 Split Core

Window Sizes 2.00" x 5.50", 4.50"x 4.50"

REGULATORY AGENCY APPROVALS

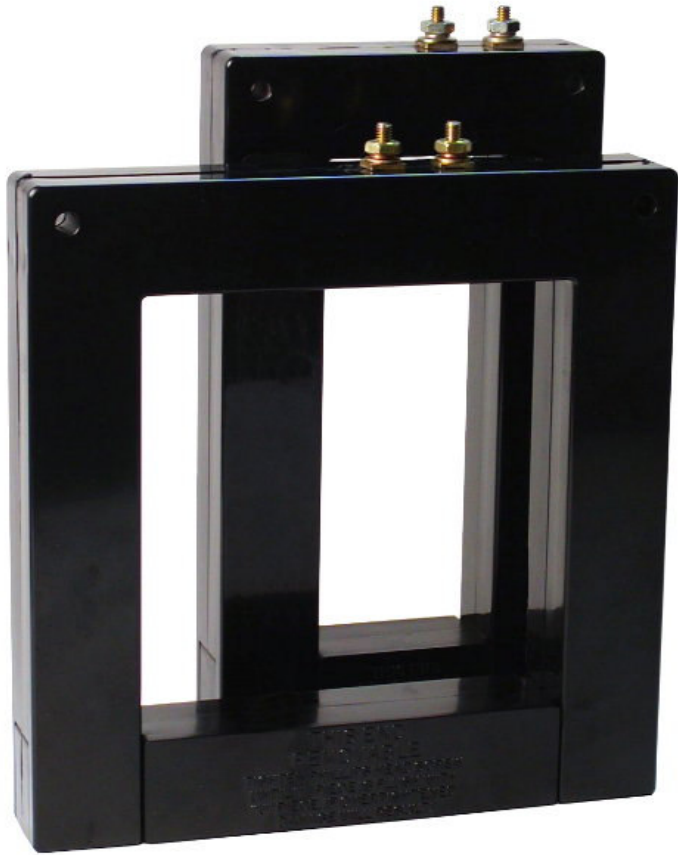


E93779



LR89403

Manufactured to meet the requirements of ANSI/IEEE C57.13.
Classified by U.L. in accordance with IEC 44-1



APPLICATION:
For energy management systems and instrumentation.

FREQUENCY:
50-400 Hz.

INSULATION LEVEL:
0.6 kV, BIL 10 kV full wave.

**CONTINUOUS THERMAL
CURRENT RATING FACTOR:**
1.33 at 30°C. amb.
1.0 at 55°C. amb.

Terminals are 8-32 brass studs with one flatwasher, lockwasher, and regular nut.

Flexible leads UL 1015, 105°C, CSA approved, #16 AWG, 24" long are available.

Approximate Weight 1.5 lbs.

5

CATALOG NUMBER	CURRENT RATIO	V.A. ± 1% CLASS	ANSI METERING CLASS AT 60HZ			CATALOG NUMBER	CURRENT RATIO	V.A. ± 1% CLASS	ANSI METERING CLASS AT 60HZ		
			BO.1	BO.2	BO.5				BO.1	BO.2	BO.5
600-401	400:5	1.5	2.4	4.8	—	601-401	400:5	1.0	4.8	—	—
600-501	500:5	2.0	2.4	4.8	—	601-501	500:5	1.5	4.8	4.8	—
600-601	600:5	2.5	2.4	2.4	—	601-601	600:5	2.0	2.4	4.8	—
600-801	800:5	5.0	1.2	1.2	2.4	601-801	800:5	2.5	1.2	2.4	4.8
600-102	1000:5	7.5	1.2	1.2	2.4	601-102	1000:5	5.0	1.2	1.2	4.8
600-122	1200:5	15.0	0.6	1.2	1.2	601-122	1200:5	10.0	1.2	1.2	2.4
600-152	1500:5	20.0	0.6	0.6	1.2	601-152	1500:5	15.0	1.2	1.2	1.2
600-162	1600:5	20.0	0.6	0.6	1.2	601-162	1600:5	15.0	1.2	1.2	1.2
600-202	2000:5	30.0	0.6	0.6	0.6	601-202	2000:5	20.0	0.6	0.6	1.2



Model 600 & 601 Split Core

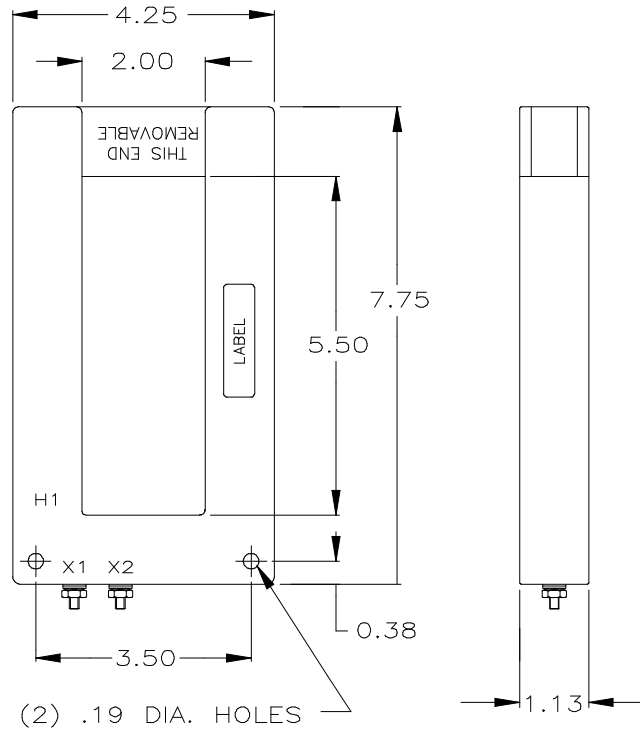
These transformers are designed for assembly to an existing electrical installation without the need for dismantling the primary bus or cables.

Caution:

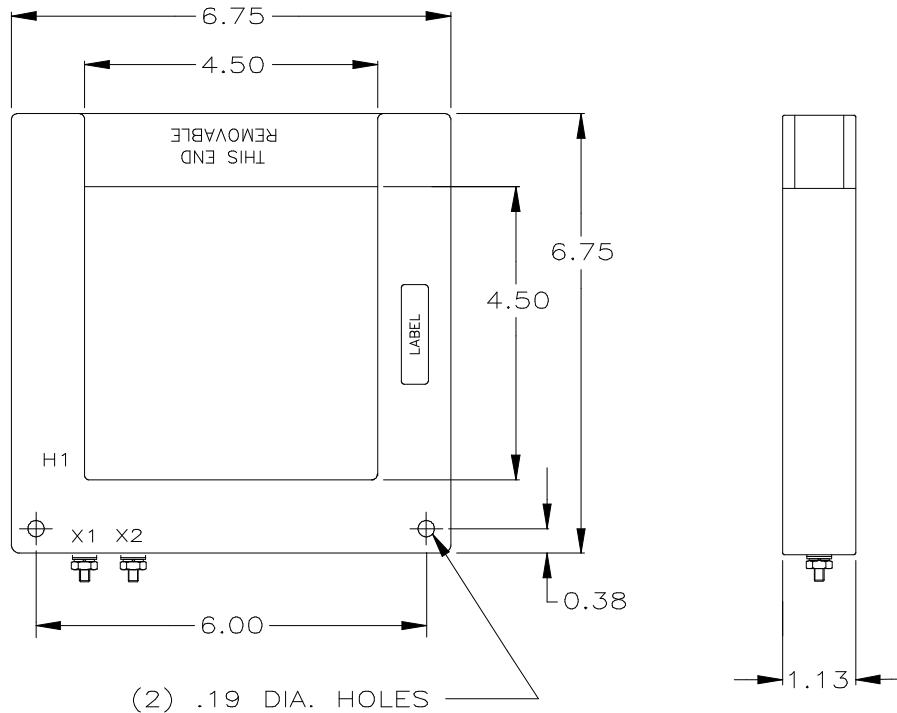
Proper safety precautions must be followed during installation by a trained electrician. Never install while bus is energized.

The current transformer must have its secondary terminals short circuited or the burden connected, before energizing the primary circuit.

Model 600



Model 601



USA, Canada, Asia, Latin America

Tel: +1-800-547-8629

Fax: +1-905-201-2455

e-mail: sales.multilin@ge.com

Europe, Middle East, Africa

Tel: +34-94-485-88-00

Fax: +34-94-485-88-45

e-mail: gemultilin.euro@ge.com

Please refer to our website www.GEMultilin.com for more detailed contact information

CS00A40576 Rev.