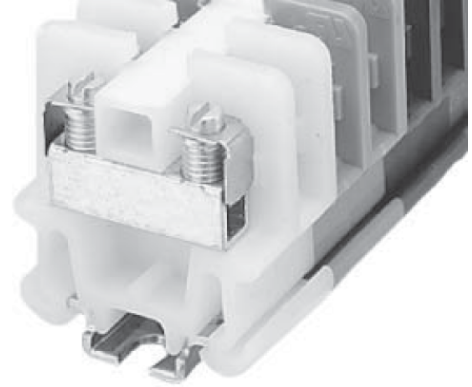


# Product Details and Certifications

## Cross Reference RA Part Number: 1492-CA1 C

 **Product: 1492-CA1**

Description: CA1, NEMA/EEMAC White, Single Circuit Open Construction Block, Pressure Plate,  
Tubular Screw, #22 - #8 AWG, Pkg. Qty. of 50



Representative Photo Only (actual product may vary based on configuration sections)

### **BASE DATA**

---

Bulletin Number	1492 Terminal Block
Electrical Standards	UL
Type of Device	NEMA/EEMAC Terminal Block
Base Block Type	Single Circuit Open Construction Block

### **DETAIL DATA**

---

ScrewType	Tubular Screw
Features	Pressure Plate
Wire Range	#22 - #8 AWG
VoltageRating	600V AC/DC
Color	White
Bulk Pack	No Bulk Pack (Single Block)

### **CERTIFICATIONS AND APPROVALS**

---

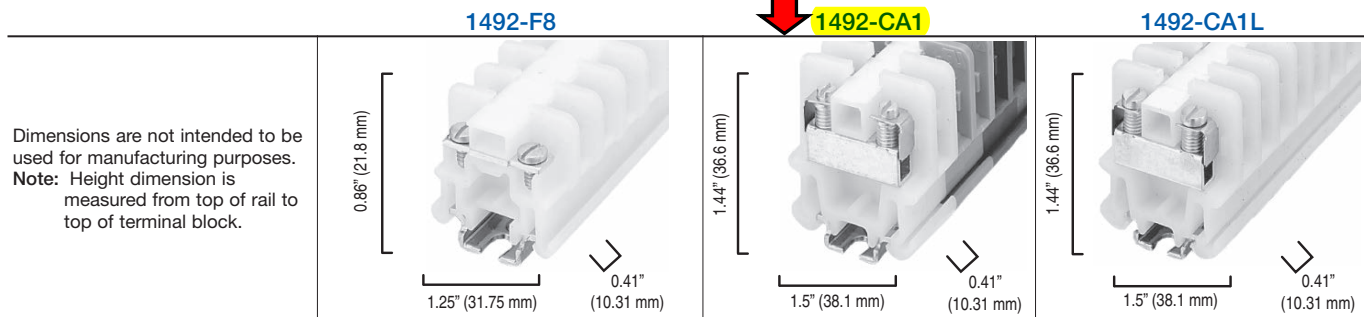
UL

For UL Certifications Directory:

<http://database.ul.com/cgi-bin/XYV/template/LISEXT/1FRAME/index.htm>

# NEMA/EEMAC Terminal Blocks

## Open Construction Blocks



Specifications	Terminal block, screw terminal with wire clamp.	Terminal block, tubular screw with pressure plate.	Terminal block, screw with large head, pressure plate.
<b>Certifications</b>	<b>UL/CSA</b>	<b>UL/CSA</b>	<b>UL/CSA</b>
Voltage Rating	300V AC/DC	600V AC/DC	600V AC/DC
Maximum Current	25 A	55 A	55 A
Wire Range (Rated Cross Section)	#22...#14 AWG (0.5...2.5 mm <sup>2</sup> )	#22...#8 AWG (0.5...10 mm <sup>2</sup> )	#22...#8 AWG (0.5...10 mm <sup>2</sup> )
Wire Strip Length	0.25 in. (6.4 mm)	0.38 in. (9.7 mm)	0.38 in. (9.7 mm)
Recommended Tightening Torque	6...14 lb•in (0.7...1.6 N•m)	8...16 lb•in (0.9...1.8 N•m)	8...16 lb•in (0.9...1.8 N•m)
Density	30 pcs/ft (98 pcs/m)	30 pcs/ft (98 pcs/m)	30 pcs/ft (98 pcs/m)
Insulation Temperature Range	-40...+221 °F (-40...+105 °C)	-40...+221 °F (-40...+105 °C)	-40...+221 °F (-40...+105 °C)

<b>Terminal Blocks</b>		Cat. No.	Pkg Qty.	Cat. No.	Pkg Qty.	Cat. No.	Pkg Qty.
<b>Color:</b>	White	<b>1492-F8</b>	50	<b>1492-CA1</b>	50	<b>1492-CA1L</b>	50
	Two 3 ft Rails White	<b>1492-F8175</b> (88 pcs/rail)	1	<b>1492-CA1175</b> (88 pcs/rail)	1	<b>1492-CA1L175</b> (88 pcs/rail)	1
	Red	1492-F8RE	50	<b>1492-CA1RE</b>	50	<b>1492-CA1LRE</b>	50
	Blue	1492-F8B	50	<b>1492-CA1B</b>	50	1492-CA1LB	50
	Black	1492-F8BL	50	<b>1492-CA1BL</b>	50	1492-CA1LBL	50
	Green	1492-F8G	50	<b>1492-CA1G</b>	50	<b>1492-CA1LG</b>	50
	Yellow	1492-F8Y	50	<b>1492-CA1Y</b>	50	1492-CA1LY	50
	Brown	1492-F8BR	50	1492-CA1BR	50	1492-CA1LBR	50
	Violet	1492-F8VT	50	1492-CA1VT	50	1492-CA1LVT	50
	Grey	1492-F8GY	50	<b>1492-CA1GY</b>	50	1492-CA1LGY	50
	Orange	<b>1492-F1OR</b>	50	1492-CA1OR	50	<b>1492-CA1LOR</b>	50
<b>Accessories (page 12-109)</b>		Cat. No.	Pkg Qty.	Cat. No.	Pkg Qty.	Cat. No.	Pkg Qty.
<b>Mounting Rails:</b>							
A-B Rail		<b>1492-N1</b>	20	<b>1492-N1</b>	20	<b>1492-N1</b>	20
3 ft Rigid A-B Rail		<b>1492-N22</b>	20	<b>1492-N22</b>	20	<b>1492-N22</b>	20
3 ft High-Rise A-B Rail		<b>1492-N44</b>	2	<b>1492-N44</b>	2	<b>1492-N44</b>	2
Standoff Brackets (use every 12 in.)		<b>1492-N25</b>	2	<b>1492-N25</b>	2	<b>1492-N25</b>	2
<b>End Barrier</b>		<b>1492-N18</b>	50	<b>1492-N16</b>	50	<b>1492-N16</b>	50
<b>End Anchors:</b>							
A-B Rail		<b>1492-N23</b>	10	<b>1492-N23</b>	10	<b>1492-N23</b>	10
A-B Rail — Normal Duty		—	—	<b>1492-N47</b>	50	<b>1492-N47</b>	50
A-B Rail — Retaining Clip — Light Duty		<b>1492-N2</b>	50	<b>1492-N2</b>	50	<b>1492-N2</b>	50
<b>Jumpers:</b>							
2-pole Uninsulated		<b>1492-N14</b>	50	<b>1492-N3</b>	50	<b>1492-N3</b>	50
50-pole Uninsulated		—	—	<b>1492-N30</b>	50	<b>1492-N30</b>	50
Fanning Strip (12-pole can cut to desired length)		—	—	<b>1492-N20</b>	1	<b>1492-N20</b>	1
<b>Marking Systems</b>		* <b>1492-N5</b>	1	<b>1492-N45</b>	20	<b>1492-N45</b>	20

\* 1 sheet, 20 strips.