

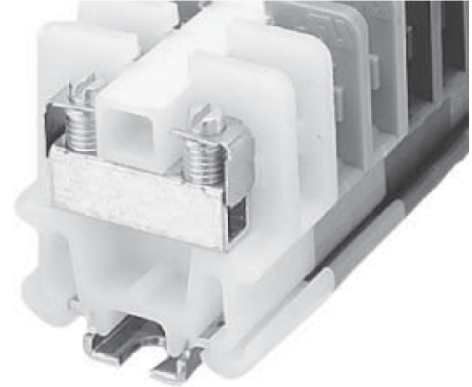
Product Details and Certifications

Cross Reference RA Part Number: 1492-CAM1 A



Product: **1492-CAM1**

Description: CAM1,White,No Bulk Pack (Single Block)



Representative Photo Only (actual product may vary based on configuration sections)

BASE DATA

Bulletin Number	1492 Terminal Block
Electrical Standards	UL
Type of Device	NEMA/EEMAC Terminal Block
Base Block Type	Single Circuit Open Construction Block

DETAIL DATA

Screw Type	Tubular Screw
Features	Pressure Plate and Multi-Rail Mountable
Wire Range	#22 - #8 AWG
Voltage Rating	600V AC/DC
Color	White
Bulk Pack	No Bulk Pack (Single Block)

CERTIFICATIONS AND APPROVALS

UR

CSA

For UL Certifications Directory:

<http://database.ul.com/cgi-bin/XYV/template/LISEXT/1FRAME/index.htm>

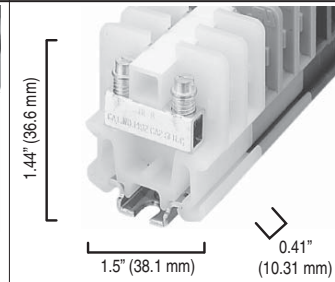
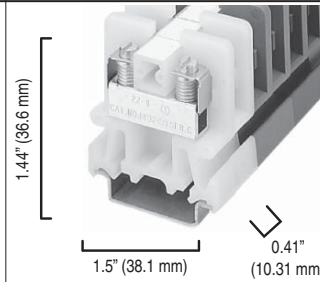
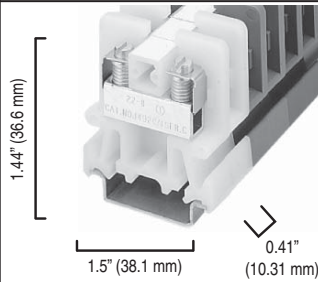


1492-CAM1

1492-CAM1L

1492-CA2

Dimensions are not intended to be used for manufacturing purposes.
Note: Height dimension is measured from top of rail to top of terminal block.



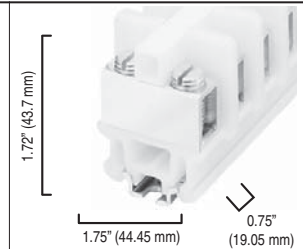
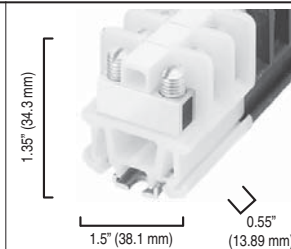
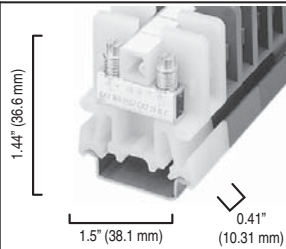
Specifications	<i>Terminal block, tubular screw with pressure plate, multi-rail mountable.</i>	<i>Terminal block, screw with large head, pressure plate, multi-rail mountable.</i>	<i>Terminal block, tubular screw without pressure plate.</i>
Certifications	UL/CSA	UL/CSA	UL/CSA
Voltage Rating	600V AC/DC	600V AC/DC	600V AC/DC
Maximum Current	55 A	55 A	55 A
Wire Range (Rated Cross Section)	#22...#8 AWG (0.5...10 mm ²)	#22...#8 AWG (0.5...10 mm ²)	#18...#8 AWG (1...10 mm ²)
Wire Strip Length	0.38 in. (9.7 mm)	0.38 in. (9.7 mm)	0.38 in. (9.7 mm)
Recommended Tightening Torque	8...16 lb•in (0.9...1.8 N•m)	8...16 lb•in (0.9...1.8 N•m)	10...16 lb•in (1.1...1.8 N•m)
Density	30 pcs/ft (98 pcs/m)	30 pcs/ft (98 pcs/m)	30 pcs/ft (98 pcs/m)
Insulation Temperature Range	-40...+221 °F (-40...+105 °C)	-40...+221 °F (-40...+105 °C)	-40...+221 °F (-40...+105 °C)

1492-CAM2

1492-CD2

1492-CE2

Dimensions are not intended to be used for manufacturing purposes.
Note: Height dimension is measured from top of rail to top of terminal block.



Specifications	<i>Terminal block, tubular screw without pressure plate, multi-rail mountable.</i>	<i>Terminal block, tubular screw without pressure plate.</i>	<i>Terminal block, tubular screw without pressure plate.</i>
Certifications	UL/CSA	UL/CSA	UL/CSA
Voltage Rating	600V AC/DC	600V AC/DC	600V AC/DC
Maximum Current	55 A	100 A	195 A
Wire Range (Rated Cross Section)	#18...#8 AWG (1...10 mm ²)	#14...#4 AWG (2.5...25 mm ²)	#12...#1/0 AWG (4...50 mm ²)
Wire Strip Length	0.38 in. (9.7 mm)	0.44 in. (11.2 mm)	0.69 in. (17.5 mm)
Recommended Tightening Torque	10...16 lb•in (1.1...1.8 N•m)	22...30 lb•in (2.5...3.4 N•m)	50 lb•in (5.6 N•m)
Density	30 pcs/ft (98 pcs/m)	22 pcs/ft (72 pcs/m)	16 pcs/ft (52 pcs/m)
Insulation Temperature Range	-40...+221 °F (-40...+105 °C)	-40...+221 °F (-40...+105 °C)	-40...+221 °F (-40...+105 °C)

Short-Circuit Current Ratings — Fuse Ratings



Cat. No.	Wire CU AWG		Overcurrent Protection Fuse Required Class/Max. Amp Rating						Maximum Voltage	SCCR, RMS SYM [A]
	Line	Load	J	T	RK1	RK5	G	CC		
1492-CAM1	14...8	14...8	60	60	30	—	50	30	600	100,000
1492-CD2	14...4	14...4	100	100	60	30	60	30	600	100,000
1492-CE2	12...1/0	12...1/0	100	100	60	30	60	30	600	100,000