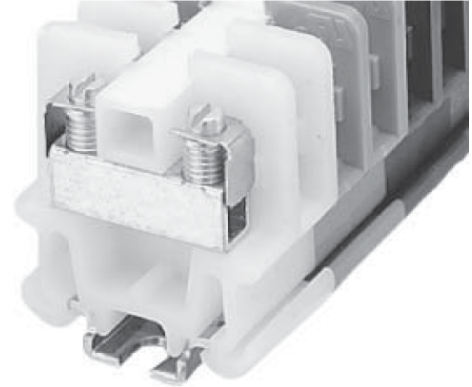


Product Details and Certifications

Cross Reference RA Part Number: 1492-CAM2B A

 Product: **1492-CAM2B**

Description: CAM2, Blue, No Bulk Pack (Single Block)



Representative Photo Only (actual product may vary based on configuration sections)

BASE DATA

Bulletin Number	1492 Terminal Block
Electrical Standards	UL
Type of Device	NEMA/EEMAC Terminal Block
Base Block Type	Single Circuit Open Construction Block

DETAIL DATA

Screw Type	Tubular Screw
Features	Multi-Rail Mountable
Wire Range	#18 - #8 AWG
Voltage Rating	600V AC/DC
Color	Blue
Bulk Pack	No Bulk Pack (Single Block)

CERTIFICATIONS AND APPROVALS

UR

CSA

For UL Certifications Directory:

<http://database.ul.com/cgi-bin/XYV/template/LISEXT/1FRAME/index.htm>

NEMA/EEMAC Terminal Blocks

Open Construction Blocks

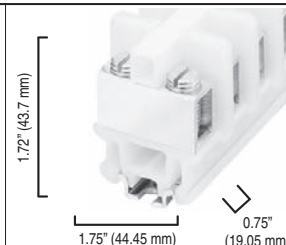
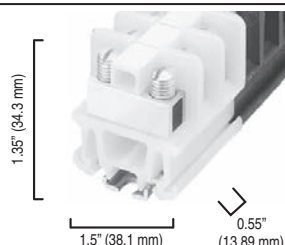
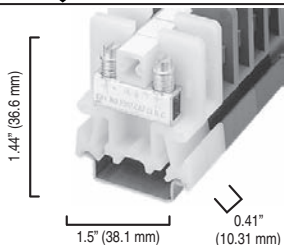


1492-CAM2

1492-CD2

1492-CE2

Dimensions are not intended to be used for manufacturing purposes.
 Note: Height dimension is measured from top of rail to top of terminal block.



	1492-CAM2		1492-CD2		1492-CE2		
Specifications	<i>Terminal block, tubular screw without pressure plate, multi-rail mountable.</i>		<i>Terminal block, tubular screw without pressure plate.</i>		<i>Terminal block, tubular screw without pressure plate.</i>		
Certifications	UL/CSA		UL/CSA		UL/CSA		
Voltage Rating	600V AC/DC		600V AC/DC		600V AC/DC		
Maximum Current	55 A		100 A		195 A		
Wire Range (Rated Cross Section)	#18...#8 AWG (1...10 mm ²)		#14...#4 AWG (2.5...25 mm ²)		#12...#1/0 AWG (4...50 mm ²)		
Wire Strip Length	0.38 in. (9.7 mm)		0.44 in. (11.2 mm)		0.69 in. (17.5 mm)		
Recommended Tightening Torque	10...16 lb•in (1.1...1.8 N•m)		22...30 lb•in (2.5...3.4 N•m)		50 lb•in (5.6 N•m)		
Density	30 pcs/ft (98 pcs/m)		22 pcs/ft (72 pcs/m)		16 pcs/ft (52 pcs/m)		
Insulation Temperature Range	-40...+221 °F (-40...+105 °C)		-40...+221 °F (-40...+105 °C)		-40...+221 °F (-40...+105 °C)		
Terminal Blocks	Cat. No.	Pkg Qty.	Cat. No.	Pkg Qty.	Cat. No.	Pkg Qty.	
Color:	White	1492-CAM2	50	1492-CD2	50	1492-CE2	10
	Two 3 ft Rails White	—	—	1492-CD2130(65/Rail)	1	—	—
	Red	1492-CAM2RE	50	1492-CD2RE	50	1492-CE2RE	10
	Blue	1492-CAM2B	50	1492-CD2B	50	1492-CE2B	10
	Black	1492-CAM2BL	50	1492-CD2BL	50	1492-CE2BL	10
	Green	1492-CAM2G	50	1492-CD2G	50	1492-CE2G	10
	Yellow	1492-CAM2Y	50	1492-CD2Y	50	1492-CE2Y	10
	Brown	1492-CAM2BR	50	1492-CD2BR	50	1492-CE2BR	10
	Violet	1492-CAM2VT	50	1492-CD2VT	50	1492-CE2VT	10
	Grey	1492-CAM2GY	50	1492-CD2GY	50	1492-CE2GY	10
	Orange	1492-CAM2OR	50	1492-CD2OR	50	1492-CE2OR	10
Accessories page 12-109	Cat. No.	Pkg Qty.	Cat. No.	Pkg Qty.	Cat. No.	Pkg Qty.	
Mounting Rails:							
A-B Rail	1492-N1	20	1492-N1	20	1492-N1	20	
3 ft Rigid A-B Rail	1492-N22	20	1492-N22	20	1492-N22	20	
3 ft High-Rise A-B Rail	—	—	1492-N44	2	1492-N44	2	
Standoff Brackets (use every 12 in.)	1492-N25	2	1492-N25	2	1492-N25	2	
1 m Symmetrical DIN	199-DR1	10	—	—	—	—	
1 m Symmetrical DIN (Aluminum)	1492-DR5	10	—	—	—	—	
1 m Hi-Rise Sym. DIN (Aluminum)	1492-DR6	2	—	—	—	—	
1 m Angled Hi-Rise Sym. DIN (Steel)	1492-DR7	2	—	—	—	—	
End Barrier	1492-NM16	50	1492-N16	50	1492-N17	50	
End Anchors:							
A-B Rail	1492-N23	10	1492-N23	10	1492-N23	10	
A-B Rail — Normal Duty	1492-N47	50	1492-N47	50	1492-N47	50	
A-B Rail — Retaining Clip — Light Duty	1492-N2	50	—	—	—	—	
DIN Rail — Normal Duty	1492-EAJ35	100	—	—	—	—	
DIN Rail — Heavy Duty	1492-EAHJ35	50	—	—	—	—	
Jumpers:							
2-pole Uninsulated	1492-N3	50	—	—	1492-N21	10	
50-pole Uninsulated	1492-N30	10	—	—	—	—	
Fanning Strip (12-pole can cut to desired length)	1492-N20	1	—	—	—	—	
Marking Systems	1492-N45	20	1492-N8	25	1492-N45	25	

Short-Circuit Current Ratings — Fuse Ratings

Cat. No.	Wire CU AWG		Overcurrent Protection Fuse Required Class/Max. Amp Rating						Maximum Voltage	SCCR, RMS SYM [A]
	Line	Load	J	T	RK1	RK5	G	CC		
1492-CAM1	14...8	14...8	60	60	30	—	50	30	600	100,000
1492-CD2	14...4	14...4	100	100	60	30	60	30	600	100,000
1492-CE2	12...1/0	12...1/0	100	100	60	30	60	30	600	100,000