

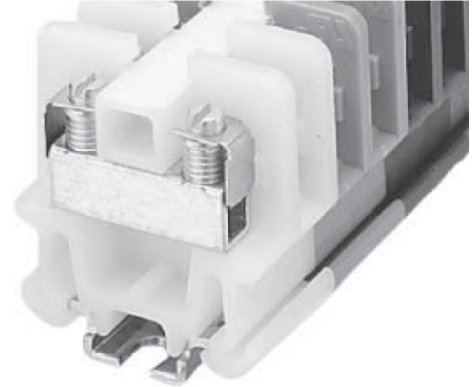
# Product Details and Certifications

Cross Reference RA Part Number: 1492-CAM2GY A



Product: **1492-CAM2GY**

Description: CAM2, Grey, No Bulk Pack (Single Block)



Representative Photo Only (actual product may vary based on configuration sections)

## BASE DATA

---

Bulletin Number	1492 Terminal Block
Electrical Standards	UL
Type of Device	NEMA/EEMAC Terminal Block
Base Block Type	Single Circuit Open Construction Block

## DETAIL DATA

---

Screw Type	Tubular Screw
Features	Multi-Rail Mountable
Wire Range	#18 - #8 AWG
Voltage Rating	600V AC/DC
Color	Grey
Bulk Pack	No Bulk Pack ( Single Block)

## CERTIFICATIONS AND APPROVALS

---

UR

CSA

For UL Certifications Directory:

<http://database.ul.com/cgi-bin/XYV/template/LISEXT/1FRAME/index.htm>

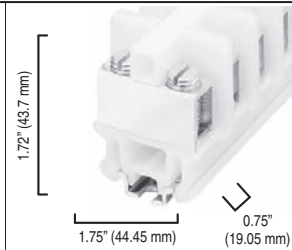
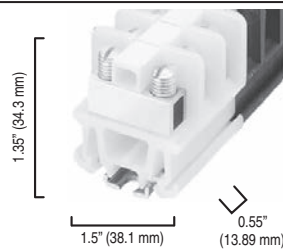
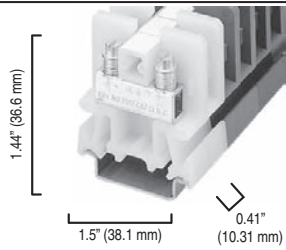


**1492-CAM2**

**1492-CD2**

**1492-CE2**

Dimensions are not intended to be used for manufacturing purposes.  
 Note: Height dimension is measured from top of rail to top of terminal block.



	<b>1492-CAM2</b>		<b>1492-CD2</b>		<b>1492-CE2</b>		
<b>Specifications</b>	<i>Terminal block, tubular screw without pressure plate, multi-rail mountable.</i>		<i>Terminal block, tubular screw without pressure plate.</i>		<i>Terminal block, tubular screw without pressure plate.</i>		
Certifications	UL/CSA		UL/CSA		UL/CSA		
Voltage Rating	600V AC/DC		600V AC/DC		600V AC/DC		
Maximum Current	55 A		100 A		195 A		
Wire Range (Rated Cross Section)	#18...#8 AWG (1...10 mm <sup>2</sup> )		#14...#4 AWG (2.5...25 mm <sup>2</sup> )		#12...#1/0 AWG (4...50 mm <sup>2</sup> )		
Wire Strip Length	0.38 in. (9.7 mm)		0.44 in. (11.2 mm)		0.69 in. (17.5 mm)		
Recommended Tightening Torque	10...16 lb•in (1.1...1.8 N•m)		22...30 lb•in (2.5...3.4 N•m)		50 lb•in (5.6 N•m)		
Density	30 pcs/ft (98 pcs/m)		22 pcs/ft (72 pcs/m)		16 pcs/ft (52 pcs/m)		
Insulation Temperature Range	-40...+221 °F (-40...+105 °C)		-40...+221 °F (-40...+105 °C)		-40...+221 °F (-40...+105 °C)		
<b>Terminal Blocks</b>	<b>Cat. No.</b>	<b>Pkg Qty.</b>	<b>Cat. No.</b>	<b>Pkg Qty.</b>	<b>Cat. No.</b>	<b>Pkg Qty.</b>	
<b>Color:</b>	White	<b>1492-CAM2</b>	50	<b>1492-CD2</b>	50	<b>1492-CE2</b>	10
	Two 3 ft Rails White	—	—	<b>1492-CD2130(65/Rail)</b>	1	—	—
	Red	1492-CAM2RE	50	1492-CD2RE	50	1492-CE2RE	10
	Blue	1492-CAM2B	50	1492-CD2B	50	1492-CE2B	10
	Black	1492-CAM2BL	50	1492-CD2BL	50	1492-CE2BL	10
	Green	1492-CAM2G	50	<b>1492-CD2G</b>	50	<b>1492-CE2G</b>	10
	Yellow	1492-CAM2Y	50	1492-CD2Y	50	1492-CE2Y	10
	Brown	1492-CAM2BR	50	1492-CD2BR	50	1492-CE2BR	10
	Violet	1492-CAM2VT	50	1492-CD2VT	50	1492-CE2VT	10
	<b>Grey</b>	<b>1492-CAM2GY</b>	50	1492-CD2GY	50	1492-CE2GY	10
	Orange	1492-CAM2OR	50	1492-CD2OR	50	1492-CE2OR	10
<b>Accessories page 12-109</b>	<b>Cat. No.</b>	<b>Pkg Qty.</b>	<b>Cat. No.</b>	<b>Pkg Qty.</b>	<b>Cat. No.</b>	<b>Pkg Qty.</b>	
<b>Mounting Rails:</b>							
A-B Rail	<b>1492-N1</b>	20	<b>1492-N1</b>	20	<b>1492-N1</b>	20	
3 ft Rigid A-B Rail	<b>1492-N22</b>	20	<b>1492-N22</b>	20	<b>1492-N22</b>	20	
3 ft High-Rise A-B Rail	—	—	<b>1492-N44</b>	2	<b>1492-N44</b>	2	
Standoff Brackets (use every 12 in.)	<b>1492-N25</b>	2	<b>1492-N25</b>	2	<b>1492-N25</b>	2	
1 m Symmetrical DIN	<b>199-DR1</b>	10	—	—	—	—	
1 m Symmetrical DIN (Aluminum)	<b>1492-DR5</b>	10	—	—	—	—	
1 m Hi-Rise Sym. DIN (Aluminum)	<b>1492-DR6</b>	2	—	—	—	—	
1 m Angled Hi-Rise Sym. DIN (Steel)	<b>1492-DR7</b>	2	—	—	—	—	
End Barrier	<b>1492-NM16</b>	50	<b>1492-N16</b>	50	<b>1492-N17</b>	50	
<b>End Anchors:</b>							
A-B Rail	<b>1492-N23</b>	10	<b>1492-N23</b>	10	<b>1492-N23</b>	10	
A-B Rail — Normal Duty	<b>1492-N47</b>	50	<b>1492-N47</b>	50	<b>1492-N47</b>	50	
A-B Rail — Retaining Clip — Light Duty	<b>1492-N2</b>	50	—	—	—	—	
DIN Rail — Normal Duty	<b>1492-EAJ35</b>	100	—	—	—	—	
DIN Rail — Heavy Duty	<b>1492-EAHJ35</b>	50	—	—	—	—	
<b>Jumpers:</b>							
2-pole Uninsulated	<b>1492-N3</b>	50	—	—	<b>1492-N21</b>	10	
50-pole Uninsulated	<b>1492-N30</b>	10	—	—	—	—	
Fanning Strip (12-pole can cut to desired length)	<b>1492-N20</b>	1	—	—	—	—	
Marking Systems	<b>1492-N45</b>	20	<b>1492-N8</b>	25	<b>1492-N45</b>	25	



**Short-Circuit Current Ratings — Fuse Ratings**

Cat. No.	Wire CU AWG		Overcurrent Protection Fuse Required Class/Max. Amp Rating						Maximum Voltage	SCCR, RMS SYM [A]
	Line	Load	J	T	RK1	RK5	G	CC		
1492-CAM1	14...8	14...8	60	60	30	—	50	30	600	100,000
1492-CD2	14...4	14...4	100	100	60	30	60	30	600	100,000
1492-CE2	12...1/0	12...1/0	100	100	60	30	60	30	600	100,000