

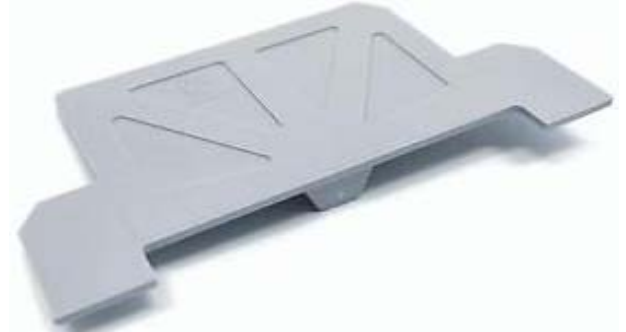
Product Details and Certifications

Cross Reference RA Part Number: 1492-EBJD3FB A



Product: 1492-EBJD3FB

Description: 1492 Terminal Block, End Barrier, Gray (Standard), Qty.50



Representative Photo Only (actual product may vary based on configuration sections)

ACCESSORY SELECTION

Bulletin Number	1492 Terminal Block Accessories
Accessory Selection	Individual Accessory Selection

SELECTION

1492 Accessory

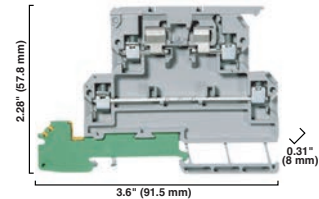
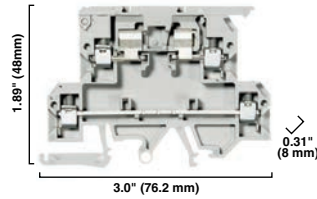
Screw Connection Terminal Blocks

Fuse Blocks

1492-JD3FB

1492-JDG3FB

Dimensions are not intended to be used for manufacturing purposes.
Note: Height dimension is measured from top of rail to top of terminal block.



Specifications

Two-level terminal block with feed-through circuit and hinged-arm fuse circuit

Three-Level terminal block with feed-through circuit, hinged-arm fuse circuit, and ground point

Certifications		CSA	IEC		CSA	IEC
Voltage Rating	300V AC/DC		500V AC/DC	300V AC/DC		500V AC/DC
Maximum Fuse Circuit Current	10 A	10 A/250V	6.3 A*	10 A	10 A/250V	6.3 A*
Maximum Feed-through Circuit Current	20 A	25 A		20 A	25 A	
Wire Range (Rated Cross Section)	#22...12 AWG	#26...12 AWG	0.5...4 mm ²	#22...12 AWG	#26...12 AWG	0.5...4 mm ²
Fuse Size (Not Supplied)	5 x 20 mm			5 x 20 mm		
Wire Strip Length	0.35 in. (9 mm)			0.35 in. (9 mm)		
Recommended Tightening Torque	5.5 lb•in (0.6 N•m)			5.5 lb•in (0.6 N•m)		
Density	38 pcs/ft (125 pcs/m)			38 pcs/ft (125 pcs/m)		
Housing Temperature Range	-58...+248 °F (-50...+120 °C)			-58...+248 °F (-50...+120 °C)		
Short-Circuit Current Rating	See page 12-42					

Terminal Blocks	Cat. No.	Pkg Qty.	Cat. No.	Pkg Qty.
Color: Grey	1492-JD3FB	50	1492-JDG3FB	50
Accessories	Cat. No.	Pkg Qty.	Cat. No.	Pkg Qty.
Mounting Rails:				
1 m Symmetrical DIN (Steel)	199-DR1	10	199-DR1	10
1 m Symmetrical DIN (Aluminum)	1492-DR5	10	1492-DR5	10
1 m Hi-Rise Sym. DIN (Aluminum)	1492-DR6	2	1492-DR6	2
1 m Angled Hi-Rise Sym. DIN (Steel)	1492-DR7	2	1492-DR7	2
End Barrier Grey	1492-EBJD3FB	20	1492-EBJD3FB	20
End Anchors:				
Screwless End Retainer	1492-ERL35	20	1492-ERL35	20
DIN Rail - Normal Duty	1492-EAJ35	100	1492-EAJ35	100
DIN Rail - Heavy Duty	1492-EAHJ35	50	1492-EAHJ35	50
Jumpers:				
Side Jumper — 4-pole	1492-SJ8A-4	50	1492-SJ8A-4	50
Side Jumper — 3-pole	1492-SJ8A-3	50	1492-SJ8A-3	50
Side Jumper — 2-pole	1492-SJ8A-2	50	1492-SJ8A-2	50
End Anchor Top Marker Carrier*	1492-GMC	50	1492-GMC	50
Cat. No. 1492-GMC Top Marker Tag	1492-M5X30 (20/card)	5	1492-M5X30 (20/card)	5
Marking Systems:				
Snap-in marker cards (Handle)	1492-M7X12 (108/card)	5	1492-M7X12 (108/card)	5
Snap-in marker cards (Handle)	1492-MR6X8 (120/card)	5	1492-MR6X8 (120/card)	5
Snap-in marker cards (Side)	1492-M6X5 (200/card)	5	1492-M6X5 (200/card)	5

* IEC standards for 5 x 20 mm fuses do not include ratings above 6.3 A.

* The Bulletin 1492-GMC marker carrier installs directly on the top of a 1492-EAJ35 end anchor or a 1492-ERL35 end retainer for group marking purposes.

