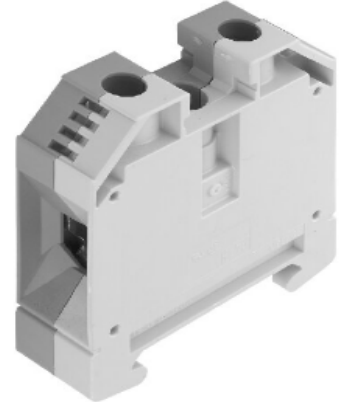


Product Details and Certifications

Cross Reference RA Part Number: 1492-JG120 A

Product: 1492-JG120

Description: 1492-J IEC Terminal Block, One-Circuit Feed-Through Ground Block, 120 mm (# 4 AWG - # 4/0 AWG), Standard Feedthrough, Green / Yellow Stripe (Standard)



Representative Photo Only (actual product may vary based on configuration sections)

BLOCK STYLE

Bulletin Number	1492 Terminal Block Accessories
Base Block Style	Grounding Blocks

BASE DATA

Base Block Type	One-Circuit Feed-Through Ground Block
-----------------	---------------------------------------

DETAIL DATA

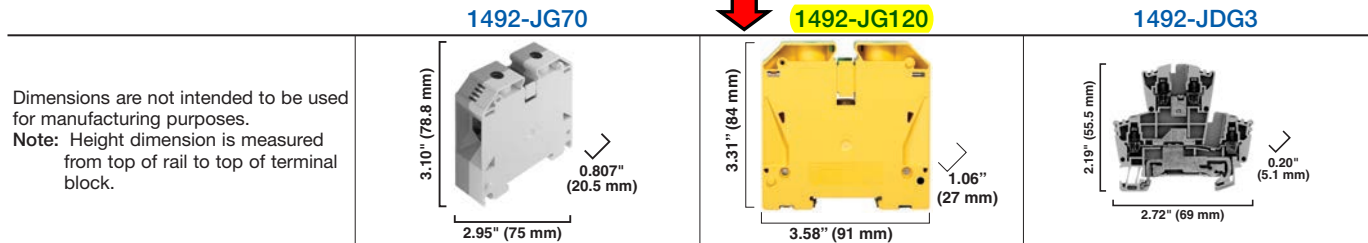
Features	Standard Feedthrough
Maximum Wire Size & Rating	UL: 4-3/0 AWG\nCSA: 4-3/0 AWG\nIEC: 16-95mm ²
Color	Green / Yellow Stripe (Standard)

CERTIFICATIONS AND APPROVALS

UR	UL 486E, UL 1059; Reference File: E40735
CSA	CSA C22.2 No. 65, No. 158; On Website, Name: Rockwell, Keyword Search: 1492
IEC	EN 60947-1, EN 60947-7-1(Feed-Through), -2(Ground), -3(Fuse)
Short Circuit Current Rating	This terminal block carries a minimum of 10kA SCCR rating for all protection methods. Please see the table for other possible elevated ratings.
For CSA Certifications:	http://directories.csa-international.org/directorymain.asp
For UL Certifications Directory:	http://database.ul.com/cgi-bin/XYV/template/LISEXT/1FRAME/index.htm

Screw Connection Terminal Blocks

Grounding Blocks



Specifications	Feed-through grounding terminal block				Feed-through grounding terminal block			Two-circuit terminal block with one feed-through and one grounding circuit			
Certifications		CSA	IEC	ATEX		CSA	IEC		CSA	IEC	ATEX
Voltage Rating	—				—			300V AC/DC	400V AC/DC	275V AC/DC	
Maximum Current	Grounding				—			20 A	24 A	21 A	
Wire Range (Rated Cross Section)	#6...2/0 AWG	70 mm ²	70 mm ² (#8...2/0 AWG)		#4...3/0 AWG	#4...4/0 AWG	16...95 mm ²	#22...12 AWG	2.5 mm ²	2.5 mm ² (#20...14 AWG)	
Wire Strip Length	0.87 in. (22 mm)				1.06 in. (27 mm)			0.39 in. (10 mm)			
Recommended Tightening Torque	87.0 lb•in (9.8 N•m)				88.5 lb•in (10 N•m)			4.5...7.1 lb•in. (0.5...0.8 N•m)			
Mounting Torque — Center Screw	17.7...35.4 lb•in (2.0...4.0 N•m)				—			—			
Density	14 pcs/ft (48 pcs/m)				11 pcs/ft (37 pcs/m)			59 pcs/ft (196 pcs/m)			
Housing Temperature Range	-58...+248 °F (-50...+120 °C)				-58...+248 °F (-50...+120 °C)			-58...+248 °F (-50...+120 °C)			
Short-Circuit Current Rating	See page 12-42										

Terminal Blocks	Cat. No.	Pkg Qty.	Cat. No.	Pkg Qty.	Cat. No.	Pkg Qty.
Color:	Green/Yellow	1492-JG70	10	1492-JG120	5	—
	Grey	—	—	—	—	1492-JDG3
		—	—	—	—	100
Accessories	Cat. No.	Pkg Qty.	Cat. No.	Pkg Qty.	Cat. No.	Pkg Qty.
Mounting Rails:						
1 m Symmetrical DIN (Steel)	—	—	—	—	199-DR1	10
1 m Symmetrical DIN (Aluminum)	—	—	—	—	1492-DR5	10
1 m Hi-Rise Sym. DIN (Aluminum)	—	—	—	—	1492-DR6	2
1 m Angled Hi-Rise Sym. DIN (Steel)	—	—	—	—	1492-DR7	2
Screw Type 1 m Symmetrical Heavy Duty DIN (Copper, Unslotted)	1492-DR8	5	1492-DR8	5	—	—
End Barrier						
Grey	Not Required	—	—	—	1492-EBJD3	20
Yellow	Not Required	—	—	—	1492-EBJD3-Y	20
Jumpers:						
Screw Center Jumper — 10-pole	—	—	—	—	1492-CJJ5-10	20
Screw Center Jumper — 4-pole	—	—	—	—	1492-CJJ5-4	50
Screw Center Jumper — 3-pole	—	—	—	—	1492-CJJ5-3	50
Screw Center Jumper — 2-pole	—	—	—	—	1492-CJJ5-2	50
Insulated Side Jumper — 24-Pole	—	—	—	—	1492-SJ5A-24	50
Insulated Side Jumper — 10-Pole	—	—	—	—	1492-SJ5A-10	50
End Anchors and Retainers:						
Screwless End Retainer	—	—	—	—	1492-ERL35	20
DIN Rail — Normal Duty	—	—	—	—	1492-EAJ35	100
DIN Rail — Heavy Duty	1492-EAHJ35	50	1492-EAHJ35	50	1492-EAHJ35	50
Marking Systems:						
Snap-in marker cards	1492-M7X12 (108/card)	5	1492-MR8X12 (84/card)	5	1492-M5X8 (200/card)	5
Snap-in marker cards	1492-M8X5 (160/card)	5	1492-M7X12 (108/card)	5	1492-M5X5 (144/card)	5