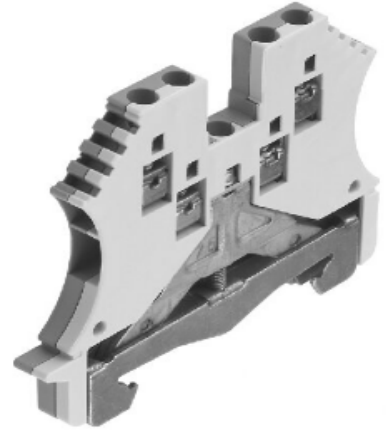


# Product Details and Certifications

## Cross Reference RA Part Number: 1492-JG2Q A

### Product: **1492-JG2Q**

Description: 1492-J IEC Terminal Block, One-Circuit Feed-Through Ground Block, 1.5 mm (# 22 AWG - # 16 AWG), 2 Connection points on each side, Green / Yellow Stripe (Standard)



Representative Photo Only (actual product may vary based on configuration sections)

### **BLOCK STYLE**

---

Bulletin Number	1492 Terminal Block Accessories
Base Block Style	Grounding Blocks

### **BASE DATA**

---

Base Block Type	One-Circuit Feed-Through Ground Block
-----------------	---------------------------------------

### **DETAIL DATA**

---

Features	2 Connection points on each side
Maximum Wire Size & Rating	UL: 22-14 AWG\nCSA: 22-14 AWG\nIEC: 1.5mm <sup>2</sup>
Color	Green / Yellow Stripe (Standard)

### **CERTIFICATIONS AND APPROVALS**

---

UR	UL 486E, UL 1059; Reference File: E40735
CSA	CSA C22.2 No. 65, No. 158; On Website, Name: Rockwell, Keyword Search: 1492
IEC	EN 60947-1, EN 60947-7-1(Feed-Through), -2(Ground), -3(Fuse)
Short Circuit Current Rating	This terminal block carries a minimum of 10kA SCCR rating for all protection methods. Please see the table for other possible elevated ratings.
For CSA Certifications:	<a href="http://directories.csa-international.org/directorymain.asp">http://directories.csa-international.org/directorymain.asp</a>
For UL Certifications Directory:	<a href="http://database.ul.com/cgi-bin/XYV/template/LISEXT/1FRAME/index.htm">http://database.ul.com/cgi-bin/XYV/template/LISEXT/1FRAME/index.htm</a>

# Screw Connection Terminal Blocks

## Grounding Blocks



**1492-JG2Q**

**1492-JG3**

**1492-JG3TW**

Dimensions are not intended to be used for manufacturing purposes. <b>Note:</b> Height dimension is measured from top of rail to top of terminal block.			
	<b>Specifications</b> Feed-through grounding terminal block with 2 connection points on each side	Feed-through grounding terminal block	Feed-through grounding terminal block with 3 connection points, 2 on one side
Certifications	CSA IEC	CSA IEC ATEX	CSA IEC ATEX
Voltage Rating	—	—	—
Maximum Current	Grounding		
Wire Range (Rated Cross Section)	#22...14 AWG 1.5 mm <sup>2</sup>	#22...12 AWG 2.5 mm <sup>2</sup>	Single Side: #22...12 AWG 2.5 mm <sup>2</sup> 2.5 mm <sup>2</sup> (#20...14 AWG)  Twin Side: #26...12 AWG 1.5 mm <sup>2</sup> 1.5 mm <sup>2</sup> (#20...16 AWG)
Wire Strip Length	0.28 in. (7 mm)	0.39 in. (10 mm)	Single Side: 0.39 in. (10 mm) Twin Side: 0.28 in. (7 mm)
Recommended Tightening Torque	5.0 lb•in (0.6 N•m)	7.1 lb•in (0.8 N•m)	Single Side: 7.1 lb•in (0.8 N•m)
Mounting Torque — Center Screw	3.5...5.3 lb•in (0.4...0.6 N•m)	3.5...6.2 lb•in (0.4...0.6 N•m)	Twin Side: 4.5 lb•in (0.5 N•m)
Density	59 pcs/ft (196 pcs/m)	59 pcs/ft (196 pcs/m)	59 pcs/ft (196 pcs/m)
Housing Temperature Range	-58...+248 °F (-50...+120 °C)	-58...+248 °F (-50...+120 °C)	-58...+248 °F (-50...+120 °C)
Short-Circuit Current Rating	See page 12-42		



<b>Terminal Blocks</b>	Cat. No.	Pkg Qty.	Cat. No.	Pkg Qty.	Cat. No.	Pkg Qty.
Color: <b>Green/Yellow</b>	<b>1492-JG2Q</b>	100	1492-JG3	100	1492-JG3TW	100
<b>Accessories</b>	Cat. No.	Pkg Qty.	Cat. No.	Pkg Qty.	Cat. No.	Pkg Qty.
Mounting Rails:						
1 m Symmetrical DIN (Steel)	199-DR1	10	199-DR1	10	199-DR1	10
1 m Symmetrical DIN (Aluminum)	1492-DR5	10	1492-DR5	10	1492-DR5	10
1 m Hi-Rise Sym. DIN (Aluminum)	1492-DR6	2	1492-DR6	2	1492-DR6	2
1 m Angled Hi-Rise Sym. DIN (Steel)	1492-DR7	2	1492-DR7	2	1492-DR7	2
End Barrier Yellow	1492-EBJ3-Y	50	1492-EBJ3-Y	50	1492-EBJ3-Y	50
End Anchors and End Retainers:						
Screwless End Retainer	1492-ERL35	20	1492-ERL35	20	1492-ERL35	20
DIN Rail — Normal Duty	1492-EAJ35	100	1492-EAJ35	100	1492-EAJ35	100
DIN Rail — Heavy Duty	1492-EAHJ35	50	1492-EAHJ35	50	1492-EAHJ35	50
Marking Systems:						
Snap-in marker cards	1492-M5X12 (144/card)	5	1492-M5X12 (144/card)	5	1492-M5X12 (144/card)	5
Snap-in marker cards	1492-M5X5 (200/card)	5	1492-M5X5 (200/card)	5	1492-M5X5 (200/card)	5