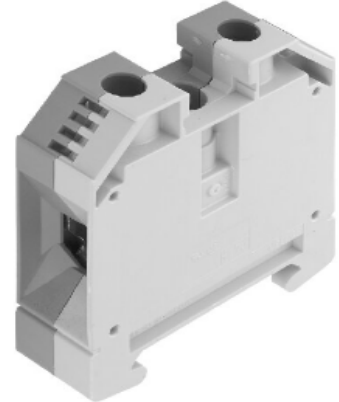


Product Details and Certifications

Cross Reference RA Part Number: 1492-JG35 A

Product: **1492-JG35**

Description: 1492-J IEC Terminal Block, One-Circuit Feed-Through Ground Block, 35 mm (# 14 - # 1/0 AWG), Standard Feedthrough, Green / Yellow Stripe (Standard)



Representative Photo Only (actual product may vary based on configuration sections)

BLOCK STYLE

| | |
|------------------|---------------------------------|
| Bulletin Number | 1492 Terminal Block Accessories |
| Base Block Style | Grounding Blocks |

BASE DATA

| | |
|-----------------|---------------------------------------|
| Base Block Type | One-Circuit Feed-Through Ground Block |
|-----------------|---------------------------------------|

DETAIL DATA

| | |
|----------------------------|---|
| Features | Standard Feedthrough |
| Maximum Wire Size & Rating | UL: 12-1 AWG\nCSA: 12-1 AWG\nIEC: 35mm ² \nEEx e II: 35mm ² /14-2 AWG |
| Color | Green / Yellow Stripe (Standard) |

CERTIFICATIONS AND APPROVALS

| | |
|----------------------------------|---|
| UR | UL 486E, UL 1059; Reference File: E40735, E187022 |
| CSA | CSA C22.2 No. 65, No. 158; On Website, Name: Rockwell, Keyword Search: 1492 |
| IEC | EN 60947-1, EN 60947-7-1(Feed-Through), -2(Ground), -3(Fuse) |
| ATEX | http://www.rockwellautomation.com/products/certification/ex/excert.html |
| Short Circuit Current Rating | This terminal block carries a minimum of 10kA SCCR rating for all protection methods. Please see the table for other possible elevated ratings. |
| For CSA Certifications: | http://directories.csa-international.org/directorymain.asp |
| For UL Certifications Directory: | http://database.ul.com/cgi-bin/XYV/template/LISEXT/1FRAME/index.htm |

Screw Connection Terminal Blocks

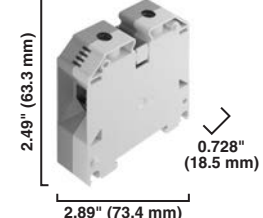
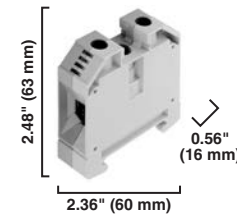
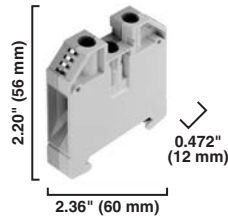
Grounding Blocks

1492-JG16

1492-JG35

1492-JG50

Dimensions are not intended to be used for manufacturing purposes.
Note: Height dimension is measured from top of rail to top of terminal block.



| Specifications | Feed-through grounding terminal block | | | | Feed-through grounding terminal block | | | | Feed-through grounding terminal block | | | |
|----------------------------------|---------------------------------------|--------------------|----------------------------------|------|---------------------------------------|-------------|--------------------|----------------------------------|---------------------------------------|---------------|--------------------|-----------------------------------|
| Certifications | | CSA | IEC | ATEX | | CSA | IEC | ATEX | | CSA | IEC | ATEX |
| Voltage Rating | — | — | — | — | — | — | — | — | — | — | — | — |
| Maximum Current | Grounding | | | | Grounding | | | | Grounding | | | |
| Wire Range (Rated Cross Section) | #24...4 AWG | 16 mm ² | 16 mm ² (#16...6 AWG) | | #12...1 AWG | #12...2 AWG | 35 mm ² | 35 mm ² (#14...2 AWG) | #10...1/0 AWG | #14...1/0 AWG | 50 mm ² | 50 mm ² (10...1/0 AWG) |
| Wire Strip Length | 0.63 in. (16 mm) | | | | 0.70 in. (18 mm) | | | | 0.94 in. (24 mm) | | | |
| Recommended Tightening Torque | 35.0 lb•in (4.0 N•m) | | | | 51.0 lb•in (5.8 N•m) | | | | 31.5 lb•in (3.6 N•m) | | | |
| Mounting Torque — Center Screw | 10.6...21.2 lb•in (1.2...2.4 N•m) | | | | 10.6...21.2 lb•in (1.2...2.4 N•m) | | | | 17.7...35.4 lb•in (2.0...4.0 N•m) | | | |
| Density | 25 pcs/ft (83 pcs/m) | | | | 19 pcs/ft (62 pcs/m) | | | | 16 pcs/ft (54 pcs/m) | | | |
| Housing Temperature Range | -58...+248 °F (-50...+120 °C) | | | | -58...+248 °F (-50...+120 °C) | | | | -58...+248 °F (-50...+120 °C) | | | |
| Short-Circuit Current Rating | See page 12-42 | | | | | | | | | | | |

Terminal Blocks

| | Cat. No. | Pkg Qty. | Cat. No. | Pkg Qty. | Cat. No. | Pkg Qty. | |
|--|-----------------------|-----------|-----------------------|-----------|-----------------------|-----------|----|
| Color: | Green/Yellow | 1492-JG16 | 50 | 1492-JG35 | 25 | 1492-JG50 | 10 |
| Accessories | Cat. No. | Pkg Qty. | Cat. No. | Pkg Qty. | Cat. No. | Pkg Qty. | |
| Mounting Rails: | | | | | | | |
| 1 m Symmetrical DIN (Steel) | 199-DR1 | 10 | — | — | — | — | |
| 1 m Symmetrical Heavy Duty DIN (Steel, Unslotted) | 199-DR4 | 5 | 199-DR4 | 5 | 199-DR4 | 5 | |
| 1 m Symmetrical DIN (Aluminum) | 1492-DR5 | 10 | 1492-DR5 | 10 | — | — | |
| 1 m Hi-Rise Sym. DIN (Aluminum) | 1492-DR6 | 2 | 1492-DR6 | 2 | — | — | |
| 1 m Angled Hi-Rise Sym. DIN (Steel) | 1492-DR7 | 2 | — | — | — | — | |
| 1 m Symmetrical Heavy Duty DIN (Copper, Unslotted) | 1492-DR8 | 5 | 1492-DR8 | 5 | 1492-DR8 | 5 | |
| 1 m Symmetrical Heavy Duty DIN (Steel) | 1492-DR9 | 5 | 1492-DR9 | 5 | 1492-DR9 | 5 | |
| End Barrier | Not Required | — | Not Required | — | Not Required | — | |
| End Anchors: | | | | | | | |
| DIN Rail — Heavy Duty | 1492-EAHJ35 | 50 | 1492-EAHJ35 | 50 | 1492-EAHJ35 | 50 | |
| Marking Systems: | | | | | | | |
| Snap-in marker cards | 1492-M7X12 (108/card) | 5 | 1492-M7X12 (108/card) | 5 | 1492-M7X12 (108/card) | 5 | |
| Snap-in marker cards | 1492-M8X5 (160/card) | 5 | 1492-M8X5 (160/card) | 5 | 1492-M8X5 (160/card) | 5 | |