

**Product:** 1794-IB32

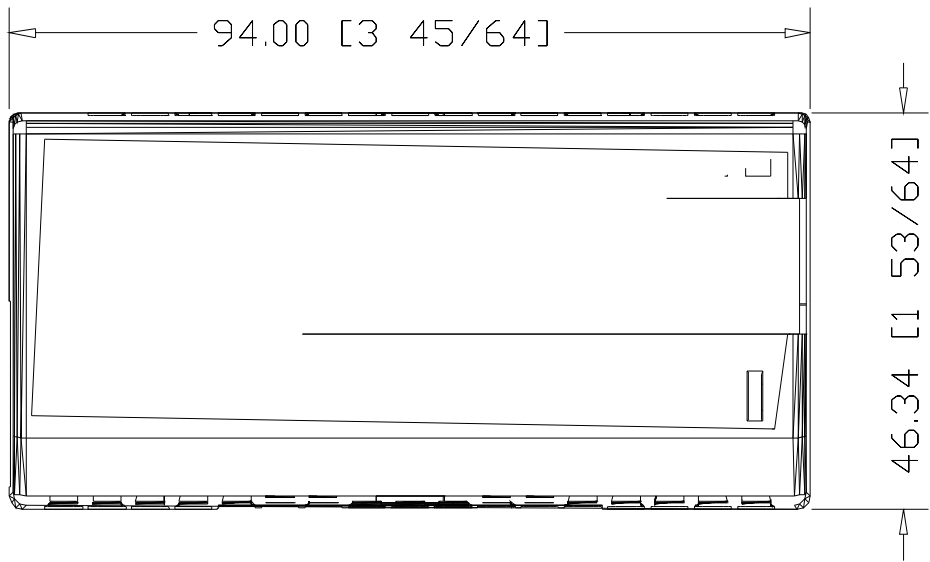
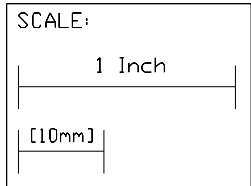
**Description:** 1794 Flex, Flex Ex, Flex XT I/O System

I/O Hardware

Digital DC Input Modules

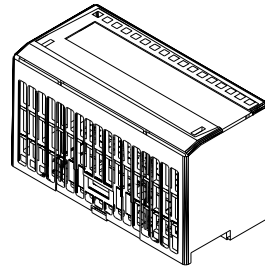
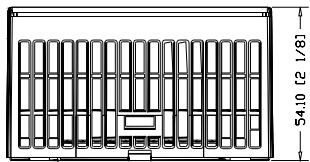
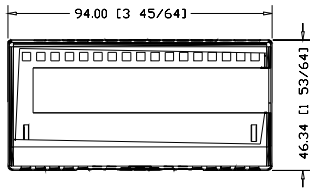
Input Module, 24VDC, 32 Sink Inputs

Top-View Drawing for 1794-IB32

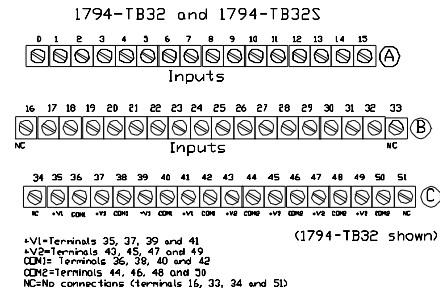


**3 View Dimensional Drawing for 1794-IB32**

1794-IB32  
24V dc Input Module, 32 in



# Wiring Diagram for 1794-IB32



Input Channel	Input Terminal	Common	Supply <sup>1</sup>
0	A-0	+V1 common connected to terminals 36, 38, 40 and 42	+V1 connected to terminals 35, 37, 39 and 41
1	A-1		
2	A-2		
3	A-3		
4	A-4		
5	A-5		
6	A-6		
7	A-7		
8	A-8		
9	A-9		
10	A-10		
11	A-11		
12	A-12		
13	A-13		
14	A-14		
15	A-15		
+V1 dc power	Power terminals 35, 37, 39 and 41		
Com1 dc Return	Common terminals 36, 38, 40 and 42		

Input Channel	Input Terminal	Common	Supply <sup>1</sup>
16	B-17	+V2 common connected to terminals 44, 46, 48 and 50	+V2 connected to terminals 43, 45, 47 and 49
17	B-18		
18	B-19		
19	B-20		
20	B-21		
21	B-22		
22	B-23		
23	B-24		
24	B-25		
25	B-26		
26	B-27		
27	B-28		
28	B-29		
29	B-30		
30	B-31		
31	B-32		
+V2 dc power	Power terminals 43, 45, 47 and 49		
Com2 dc Return	Common terminals 44, 46, 48 and 50		

1. 2-wire input devices use input and supply terminals; 3-wire devices use input, common and supply terminals.