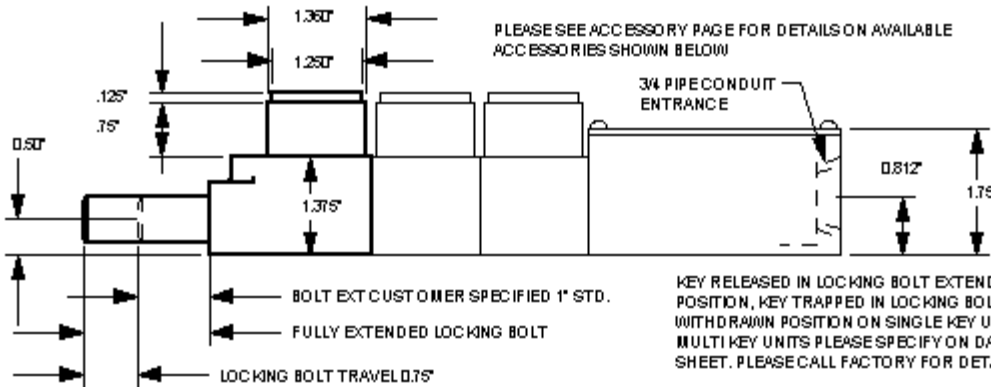


NOTE:
ALSO AVAILABLE WITH TOGGLE SWITCH RATED AT 15A, 120VAC
3PDT, OR 4PDT IN MKII ENCLOSURE 2.25" W X 3" H X 4.937" L.

PLEASE SEE ACCESSORY PAGE FOR DETAILS ON AVAILABLE
ACCESSORIES SHOWN BELOW



TYPE B-4003 TECHNICAL INFORMATION

UNIT DIAGRAM	CAT#	TYPE	DESCRIPTION	SHIP WT.
	S10S810Y B-4003-1		ONE KEY UNIT	1LB 12 OZ
	S10S811Y B-4003-2		TWO KEY UNIT	3LBS 00 OZ
	S10S812Y B-4003-3		THREE KEY UNIT	4LBS 4 OZ
	S10S816Y B-4003-1C		ONE KEY UNIT WITH CONTACT MAKER	3LBS 60Z
	S10S817Y B-4003-2C		TWO KEY UNIT WITH CONTACT MAKER	4LBS 10 OZ
	S10S818Y B-4003-3C		THREE KEY UNIT WITH CONTACT MAKER	6LBS 40Z
	S10S816Y MKII B-4003-1C MKII		ONE KEY UNIT WITH TOGGLE SWITCH	5LBS 4 OZ
	S10S817Y MKII B-4003-2C MKII		TWO KEY UNIT WITH TOGGLE SWITCH	7LBS 0 OZ
	S10S818Y MKII B-4003-3C MKII		THREE KEY UNIT WITH TOGGLE SWITCH	8LBS 6 OZ

GENERAL SPECIFICATIONS:

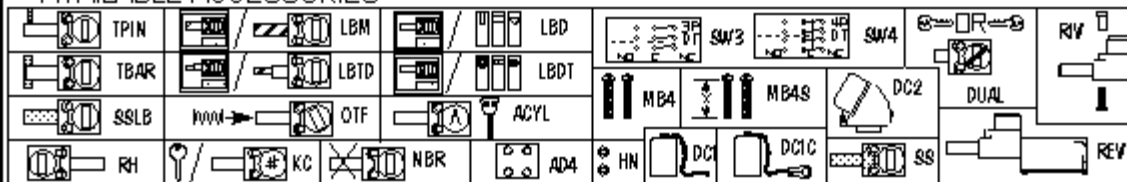
STANDARD UNIT
HOUSING: CAST BRONZE
LOCKING BOLT: SILVER BRONZE CDA642
INTERNAL PARTS: BRASS, & STAINLESS STEEL
FINISH: NATURAL

STAINLESS STEEL UNIT
HOUSING: CAST 316 STAINLESS STEEL
LOCKING BOLT: STAINLESS STEEL
INTERNAL PARTS: BRASS- NICKEL PLATED & S.S.
DUST COVER: STAINLESS STEEL
FINISH: NATURAL

CONTACT MAKER ENCLOSURE
HOUSING: CAST BRONZE

MULTI-KEY UNITS WITH 4, 5 & 6 KEYS AVAILABLE
PLEASE CALL FACTORY FOR PART NUMBERS,
DETAILS AND PRICING

AVAILABLE ACCESSORIES



SUPERIOR INTERLOCK CORPORATION (718) 821-8949 * fax (718) 417-6162
73-39 CENTRAL AVENUE, GLENDALE, NY 11385 USA

www.superiorinterlock.com