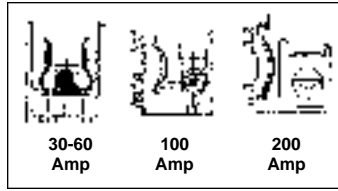




## Class J Fuse Holders - 600 Volt



Fuse Clips



- DIN Mountable
- Compact Design

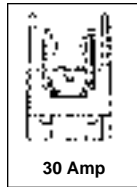
600 volt, 30-200 amps. Tin-plated copper alloy clips, except 100 & 200 amp (1-pc. aluminum with tin-plated copper spring). Tested and approved for 200,000 amp interrupting capacity. **Base flammability rating:** UL 94V-0. UL listed, CSA certified. **Wire connections:** S=Screw; SP = Sems Pressure; B = Box (aluminum with tin plate).

Mfr.'s Type	No. of Poles	Amps	AWG	Fuse Size (Dia. x L.)	Each
6J30A1S	1	30	#10 - #22 CU	$\frac{3}{8}$ " x 2 $\frac{1}{4}$ "	7.38
6J30A2S	2				13.81
6J30A3S	3				18.72
6J30A1SP	1	30	#10 - #14 CU		7.92
6J30A2SP	2				15.06
6J30A3SP	3				20.95
6J30A1B	1	30	#2 - #14 CU AL		8.84
6J30A2B	2				16.55
6J30A3B	3				22.43
6J60A1B	1	60	#2 - #14 CU AL	10.54	
6J60A2B	2			17.81	
6J60A3B	3			25.12	
6J100A1B	1	100	#2/0 - #14 CU	18.95	
6J100A3B	3		#2/0 - #12 AL	48.33	
6J200A1B	1	200	250 MCM-#6 CUAL	78.24	
6J200A3B	3			146.92	

## Class M Fuse Holders - 600 Volt



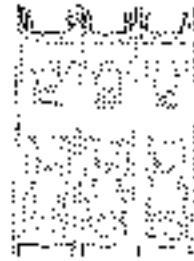
Fuse Clip



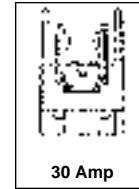
600 volt, 30 amps. Tin-plated copper alloy clips. High impact thermoplastic base, 125°C (UL 94V-0). UL recognized, CSA certified. **Wire connections:** SQ/SPQ = quick connect standard with screw(s) or sems pressure(SP); B = Box (aluminum with tin plate); BCU = copper box connector.

Mfr.'s Type	No. of Poles	Amps	AWG	Fuse Size (Dia. x L.)	Each
6M30A1SQ	1	30	#10 - #22 CU	$\frac{1}{32}$ " x 1 $\frac{1}{2}$ "	3.30
6M30A2SQ	2				5.18
6M30A3SQ	3				7.22
6M30A1SPQ	1	30	#10 - #14 CU		4.38
6M30A2SPQ	2				6.70
6M30A3SPQ	3				8.31
6M30A1B	1	30	#6 - #14 CU		5.38
6M30A2B	2				8.66
6M30A3B	3				12.14
6M30A1BCU	1	30	#6 - #14 CU	6.15	
6M30A2BCU	2			9.36	
6M30A3BCU	3			13.13	

## Class CC Fuse Holders - 600 Volt



Fuse Clip



600 volt, 30 amps. Tin-plated copper clips with reject member. Tested and approved for 200,000 amp interrupting capacity. High impact thermoplastic, 125°C (UL94V-0). UL listed, CSA certified. **Wire connections:** SQ/SPQ = quick connect standard with screw(s) or sems pressure(SP); B = Box (aluminum with tin plate); BCU = copper box connector.

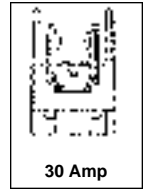
Mfr.'s Type	No. of Poles	Amps	AWG	Fuse Size (Dia. x L.)	Each
6CC30A1SQ	1	30	#10 - #22 CU	$\frac{1}{32}$ " x 1 $\frac{1}{2}$ "	3.69
6CC30A2SQ	2				6.00
6CC30A3SQ	3				8.26
6CC30A1SPQ	1	30	#10 - #14 CU		4.77
6CC30A2SPQ	2				8.16
6CC30A3SPQ	3				8.91
6CC30A1B	1	30	#6 - #14 CU		7.46
6CC30A2B	2				10.79
6CC30A3B	3				14.95
6CC30A1BCU	1	30	#6 - #14 CU	12.25	
6CC30A2BCU	2			13.49	
6CC30A3BCU	3			18.68	

## Class G Fuse Holders - 300 Volt

300 volt, 30 amps. Tin-plated copper alloy clips. High impact thermoplastic base, 125°C (UL 94V-0). UL listed, CSA certified. **Wire connections:** SQ/SPQ = quick connect standard with screw(s) or sems pressure(SP); B = Box (aluminum with tin plate); BCU = copper box connector.



Fuse Clip

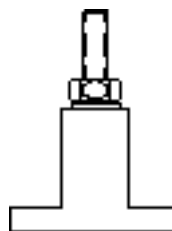


15 and 20 amp Class G fuses available. Call Resource Electronics for price and availability.

Mfr.'s Type	No. of Poles	Amps	AWG	Fuse Size (Dia. x L.)	Each
G30A1SQ	1	30	#10 - #22 CU	$\frac{1}{32}$ " x 1 $\frac{1}{2}$ "	3.73
G30A2SQ	2				5.62
G30A3SQ	3				7.74
G30A1SPQ	1	30	#10 - #14 CU		4.01
G30A2SPQ	2				6.05
G30A3SPQ	3				8.43
G30A1B	1	30	#6 - #14 CU		4.59
G30A2B	2				7.57
G30A3B	3				10.92
G30A1BCU	1	30	#6 - #14 CU	5.51	
G30A2BCU	2			9.46	
G30A3BCU	3			13.67	

### Specifications

- Base, General Purpose Phenolic, 150°C
- Stud, Steel Zinc Plated
- Nuts and Washers Provided Unassembled
- UL Recognized File No. E35113



Mfr.'s Type	Amps (max.)	Fuse Size (Dia.)	Each
ST14	400	1 $\frac{1}{2}$ "	8.99
ST38	800	3"	9.32