

A2D & A6D

TIME DELAY / CLASS RK1



UPGRADE YESTERDAY'S CIRCUITS TO TODAY'S TYPE 2 PROTECTION.

Amp-trap 2000® SmartSpot™ A2D, A6D fuses now provide a visual open fuse indicator. With advanced material technology added to the existing product line the A2D, A6D fuses provide IEC Type “2” (No Damage) protection to main, feeder, and branch circuits, for all types of loads — A2D, A6D’s time delay characteristics for handling harmless in-rush currents, its current limiting ability and wide range of ratings (from 1 to 600 Amperes) — give excellent protection for all your applications.

Features/Benefits

- **Solid State SmartSpot Indicator**
- **Time delay** for motor starting and transformer inrush currents without nuisance opening
- **300kA interrupting rating** - self-certified, UL witnessed tests
- **Extremely Current Limiting** for low peak let-thru current
- **Easy 2-to-1 selectivity** for prevention of nuisance shut downs and “black outs”
- **Rejection-style design** prevents replacement errors (when used with recommended fuse blocks)
- **High-visibility orange label** gives instant recognition
- **Reduced inventory** by taking the place of RK5, K, and H fuses
- **Metal-embossed date and catalog number** for easier traceability and lasting identification
- **Fiberglass body** provides dimensional stability in harsh industrial settings
- **Brass end-caps** (blade-style) for cooler operation and superior performance

HIGHLIGHTS:

- SmartSpot Indicator
- Time Delay
- Current Limiting
- Plated Terminals

APPLICATIONS:

- Motors
- Safety Switches
- Transformers
- Branch Circuit Protection
- Disconnects
- Control Panels
- All General-purpose Circuits

Ratings

- **A2D**
AC: 1/10 to 600A
250VAC, 200kA I.R.
(self certified for 250VAC, 300kA I.R., UL witnessed)
- **A6D**
AC: 1/10 to 600A
600VAC, 200kA I.R.
(self certified for 600VAC, 300kA I.R.)

Approvals

- UL Listed to Standard 248-12
- CSA Certified to Standard C22.2 No. 248.12



TIME DELAY / CLASS RK1 FUSES

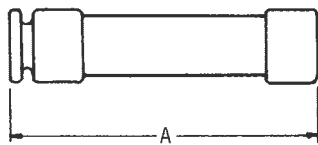
A2D & A6D

Standard Fuse Ampere Ratings, Catalog Numbers

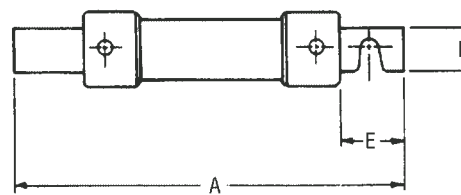
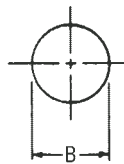
Ampere Rating	Catalog Number		Ampere Rating	Catalog Number		Ampere Rating	Catalog Number	
	250V	600V		250V	600V		250V	600V
1/10	A2D1/10R	A6D1/10R	3-1/2	A2D3-1/2R	A6D3-1/2R	50	A2D50R	A6D50R
15/100	A2D15/100R	A6D15/100R	4	A2D4R	A6D4R	60	A2D60R	A6D60R
2/10	A2D2/10R	A6D2/10R	4-1/2	A2D4-1/2R	A6D4-1/2R	70	A2D70R	A6D70R
3/10	A2D3/10R	A6D3/10R	5	A2D5R	A6D5R	75	A2D75R	-
4/10	A2D4/10R	A6D4/10R	5-6/10	A2D5-6/10R	A6D5-6/10R	80	A2D80R	A6D80R
1/2	A2D1/2R	A6D1/2R	6	A2D6R	A6D6R	90	A2D90R	A6D90R
6/10	A2D6/10R	A6D6/10R	6-1/4	A2D6-1/4R	A6D6-1/4R	100	A2D100R	A6D100R
8/10	A2D8/10R	A6D8/10R	7	A2D7R	A6D7R	110	A2D110R	A6D110R
1	A2D1R	A6D1R	8	A2D8R	A6D8R	125	A2D125R	A6D125R
1-1/8	A2D1-1/8R	A6D1-1/8R	9	A2D9R	A6D9R	150	A2D150R	A6D150R
1-1/4	A2D1-1/4R	A6D1-1/4R	10	A2D10R	A6D10R	175	A2D175R	A6D175R
1-4/10	A2D1-4/10R	A6D1-4/10R	12	A2D12R	A6D12R	200	A2D200R	A6D200R
1-6/10	A2D1-6/10R	A6D1-6/10R	15	A2D15R	A6D15R	225	A2D225R	A6D225R
1-8/10	A2D1-8/10R	A6D1-8/10R	17-1/2	A2D17-1/2R	A6D17-1/2R	250	A2D250R	A6D250R
2	A2D2R	A6D2R	20	A2D20R	A6D20R	300	A2D300R	A6D300R
2-1/4	A2D2-1/4R	A6D2-1/4R	25	A2D25R	A6D25R	350	A2D350R	A6D350R
2-1/2	A2D2-1/2R	A6D2-1/2R	30	A2D30R	A6D30R	400	A2D400R	A6D400R
2-8/10	A2D2-8/10R	A6D2-8/10R	35	A2D35R	A6D35R	450	A2D450R	A6D450R
3	A2D3R	A6D3R	40	A2D40R	A6D40R	500	A2D500R	A6D500R
3-2/10	A2D3-2/10R	A6D3-2/10R	45	A2D45R	A6D45R	600	A2D600R	A6D600R



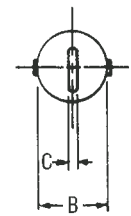
Note: Indicator Not available (1-7a)



0-60A



61-600A



Dimensions

AMPERE RATING	A		B		C		D		E	
	In.	mm	In.	mm	In.	mm	In.	mm	In.	mm
250V-A2D										
0-30	2	51	9/16	14	-	-	-	-	-	-
31-60	3	76	13/16	21	-	-	-	-	-	-
61-100	5-7/8	149	1-1/16	27	1/8	3	3/4	19	1	25
101-200	7-1/8	181	1-9/16	40	3/16	5	1-1/8	28	1-3/8	35
201-400	8-5/8	219	2-1/16	53	1/4	6	1-5/8	41	1-7/8	48
401-600	10-3/8	264	2-9/16	66	1/4	6	2	51	2-1/4	57
600V-A6D										
0-30	5	127	13/16	21	-	-	-	-	-	-
31-60	5-1/2	139	1-1/16	27	-	-	-	-	-	-
61-100	7-7/8	200	1-5/16	34	1/8	3	3/4	19	1	25
101-200	9-5/8	244	1-13/16	46	3/16	5	1-1/8	28	1-3/8	35
201-400	11-5/8	295	2-9/16	66	1/4	6	1-5/8	41	1-7/8	48
401-600	13-3/8	340	3-1/8	80	1/4	6	2	51	2-1/4	57

Recommended Fuse Blocks With Box Connectors for Amp-trap® Class RK1 Fuses

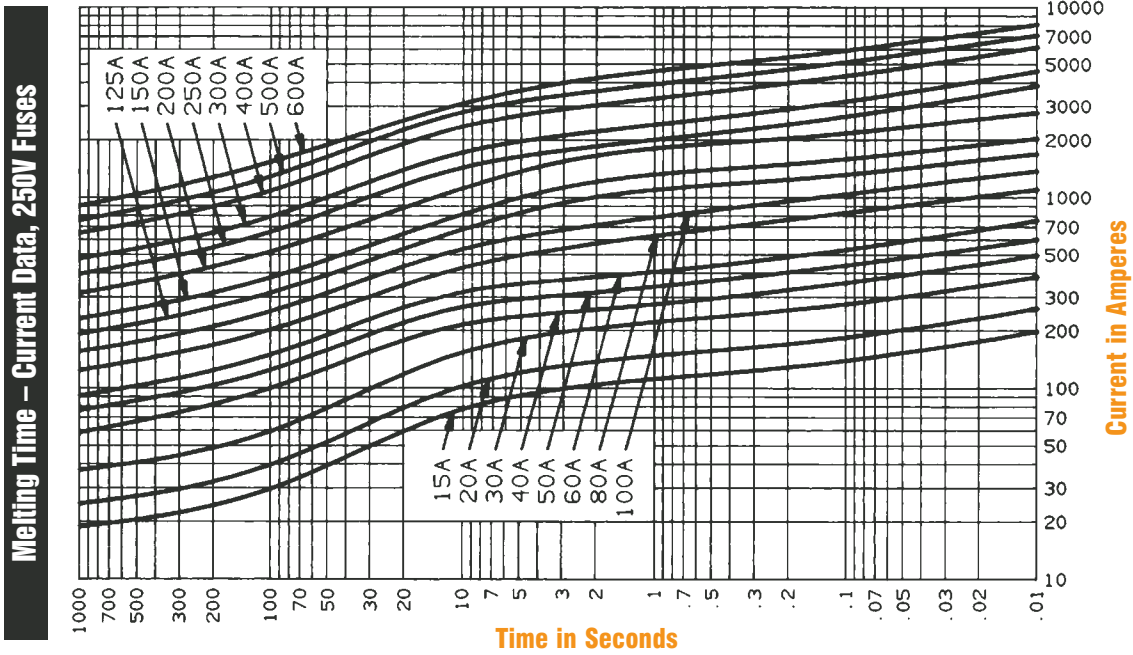
Fuse Ampere Rating	Catalog Number			
	250V		600V	
	1 Pole	3 pole	1 pole	3 pole
0-30	20306R	20308R	60306R	60308R
31-60	20606R	20608R	60606R	60608R
61-100	21036R	21038R	61036R	61038R
101-200	22001R	22003R	62001R	62003R
201-400	24001R	24003R	64001R	64003R
401-600	2631R	2633R	6631R	6633R

A variety of pole configurations and termination provisions is available.

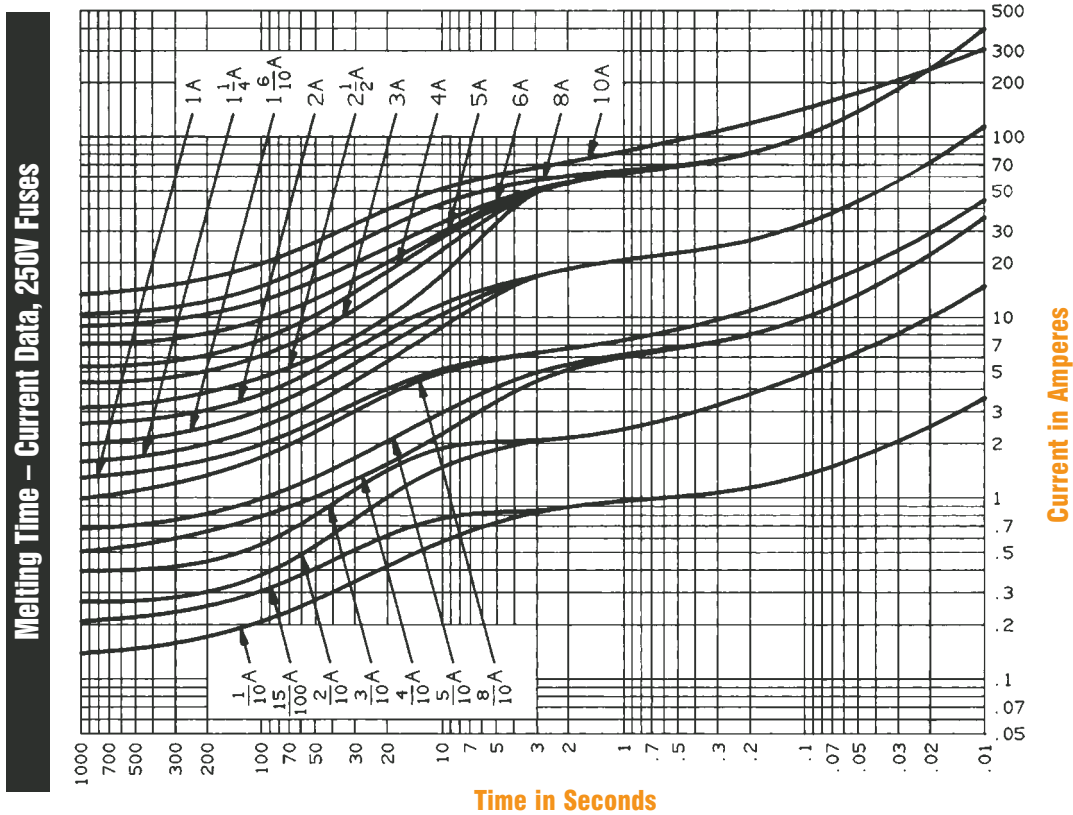
TIME DELAY / CLASS RK1 FUSES

A2D & A6D

A2D15 to 600



A2D1/10 to 10

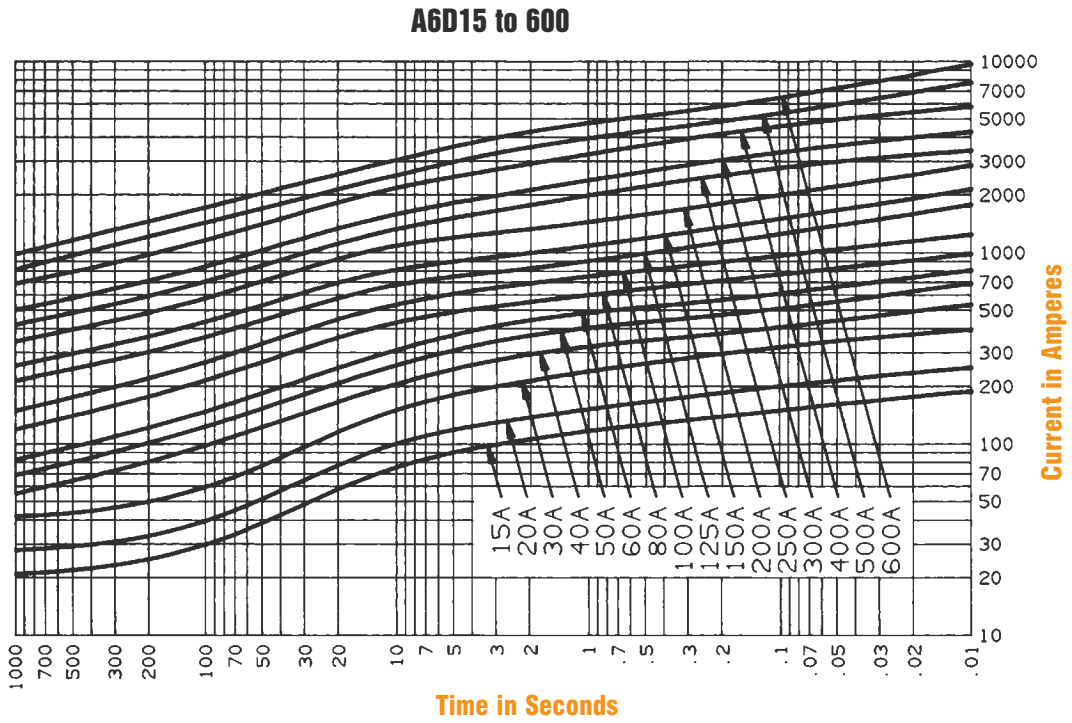


TIME DELAY / CLASS RK1 FUSES

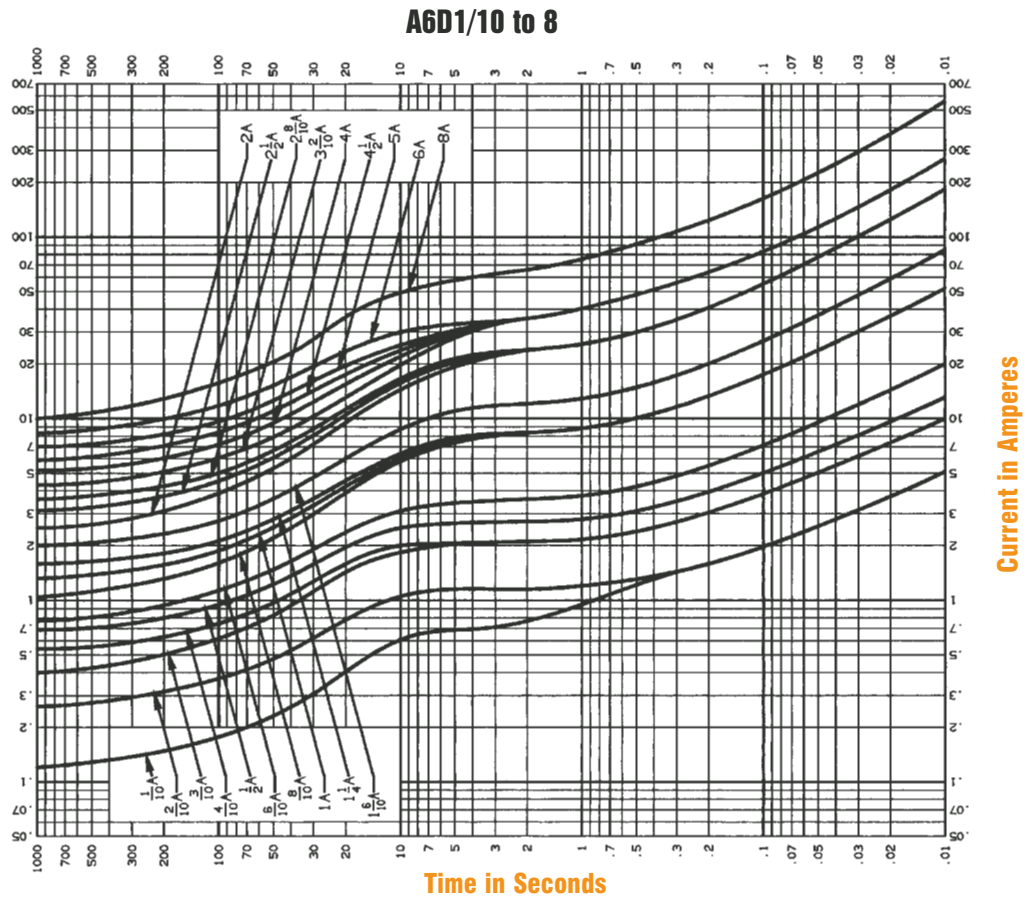
A2D & A6D



Melting Time – Current Data, 600V Fuses



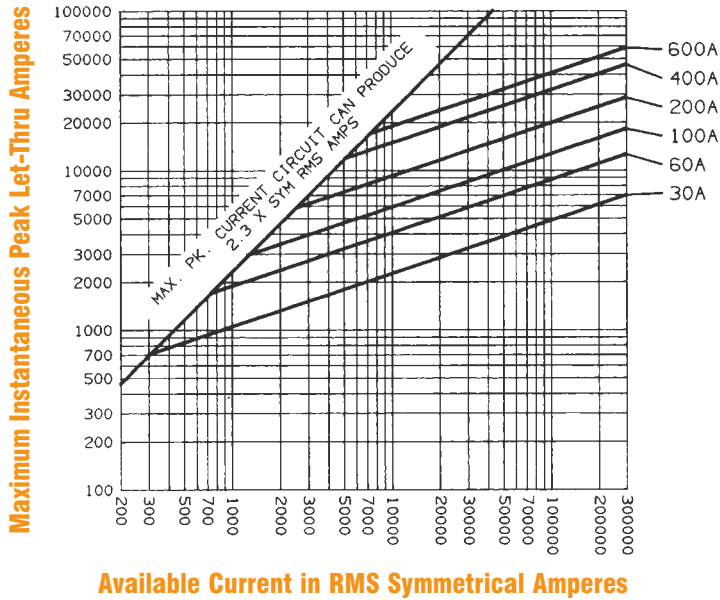
Melting Time – Current Data, 600V Fuses



TIME DELAY / CLASS RK1 FUSES

A2D & A6D

Peak Let-Thru Current Data – A2D30 to 600, 250 Volts AC



Note: See Application Tables page L9 for Three Phase Class RK1 A2D Fuses and Three Phase Class RK1 A6D Fuses.

Peak Let-Thru Current Data – A6D30 to 600, 600 Volts AC

