

Product Details and Certifications

Cross Reference RA Part Number: PN-29788

Product: **592-EEFC**

Description: Bulletin 592, E1 Plus Solid State Overload Relay, Automatic / Manual Reset, 9-45 Amps (3 Phase), Mounts to NEMA Contactor



Representative Photo Only (actual product may vary based on configuration sections)

OVERLOAD DATA

Bulletin Number	592- NEMA Overload Relay
Overload Relay Type	Selectable Trip Class (10, 15, 20, 30), Selectable Auto/Manual-Auto Reset
Overload Current Adjustment Range (Amps)	9-45 Amps (3 Phase)
Mounts to Contactor Size	NEMA Contactor Size 0,1,2

CERTIFICATIONS AND APPROVALS

UL
CSA
IEC
CE

For UL Certifications Directory:

<http://database.ul.com/cgi-bin/XYV/template/LISEXT/1FRAME/index.htm>

Bulletin 592
Overload Relays
 Product Overview

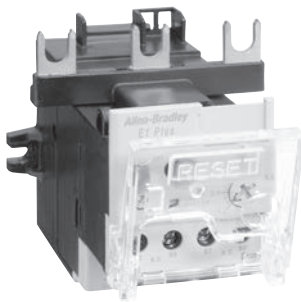
Overload Relays



Bulletin	592-EE	592-EC1	592-EC2/EC3	592-EC5	592
Type	E1 Plus Electronic Overload Relay	E3 Electronic Overload Relay	E3 Plus Electronic Overload Relay	E3 Plus Electronic Overload Relay	Eutectic Alloy Overload Relay
Rated Current (Range)	0.1...800 A	0.4...5000 A			0.2...2250 A
NEMA Operating Voltage, Nominal	600V				
IEC Operating Voltage, Nominal	690/1000V	690/1000V			—
Overload Type	Electronic	Microprocessor-Based			Eutectic Alloy
Trip Class (Fixed)	—	—			10, 20, 30
Trip Class (Adjustable)	10, 15, 20, 30	5...30			—
Ambient Temperature Compensated	✓	✓	✓	✓	—
Reset Type	Automatic and Manual	Automatic and Manual	Automatic and Manual	Automatic and Manual	Manual Only
Adjustment Range	5:1	5:1	5:1	5:1	—
Phase Loss	3 s	Adjustable Delay	Adjustable Delay	Adjustable Delay	—
Ground (Earth) Fault	Optional	—	Sensitive	Sensitive	—
Overcurrent (Jam) Detection	Optional	✓	✓	✓	—
Stall Detection	—	✓	✓	✓	—
Underload Detection	—	✓	✓	✓	—
Current Imbalance	—	✓	✓	✓	—
PTC Thermistor Monitoring	Optional	—	✓	✓	—
Warning Settings	—	✓	✓	✓	—
N.C. Trip Contact	✓	✓	✓	✓	✓
N.O. Alarm Contact	✓	—	—	—	✓ (Option)
No. of Outputs	—	1	2	2	—
No. of Inputs	—	2	4	6	—
ODVA (DeviceNet) Conformance	Optional	✓	✓	✓	—
Variable Frequency Drive (VFD) Compatible	—	✓	✓	✓	✓
Voltage Detection	—	—	—	✓	—
Power Monitoring	—	—	—	✓	—
Product Selection	Page 1-161	Page 1-163			Page 1-164

E1 Plus Electronic Overload Relays

Overview/Product Selection



E1 Plus Electronic Overload Relays

- 0.1 ... 90 A Current Range
- Single- and Three-Phase Devices
- Self-Powered
- Phase Loss Protection
- Wide Adjustment Range (5:1)
- Insert-Molded Power Connections
- 1 N.O. and 1 N.C. Isolated Auxiliary Contacts (B600 Rated)
- Low Energy Consumption (150 mW)
- Ambient Temperature Compensation
- Visible Trip Indication
- Selectable Trip Class (10, 15, 20, or 30)
- Selectable Manual/Auto-Manual Reset

Table of Contents

Product Selection..... this page

Approximate Dimensions..... 1-162

Accessories..... 2-212

Specifications..... 2-215

Standards Compliance

IEC EN 60947-4-1
 EN 60947-5-1
 CSA 22.2, No. 14
 UL 508

Certifications

cULus Listed (File No. E14840,
 Guide No. NKCR, NKCR7)

Product Selection

Bulletin 592-EE – Three Phase Devices

- Selectable Trip Class (10, 15, 20, 30)
- Selectable Manual/Auto-Manual Reset

Mounts to Contactor	Adjustment Range [A]	Cat. No.
00	0.1...0.5	592-EEAT
	0.2...1.0	592-EEBT
	1.0...5.0	592-EECT
	3.2...16	592-EEDT
0...2	0.2...1.0	592-EEBC
	1.0...5.0	592-EECC
	3.2...16	592-EEDC
	5.4...27	592-EEEC
	9...45	592-EEFC
3	9...45	592-EEFD
	18...90	592-EEGD
4	30...150	592-EEHE
5	60...300	592-EEKF
6	120...600	592-EEMG

Bulletin 592S-EE – Single-Phase Devices

- Selectable Trip Class (10, 15, 20, 30)
- Selectable Manual/Auto-Manual Reset

Mounts to Contactor	Adjustment Range [A]	Cat. No.
00	1.0...5.0	592S-EEPT
	3.2...16	592S-EERT
	5.4...27	592S-EEST
	1.0...5.0	592S-EEPC
0...2	3.2...16	592S-EERC
	5.4...27	592S-EESC
	9...45	592S-EETC
3	18...90	592S-EEUD

