



→ Cross Reference RA Part Number PN-105054

SINGLE PHASE DRY TYPE TRANSFORMER
ALLEN-BRADLEY
 MILWAUKEE, WI. USA


 LR3902


 E112313

P/N PN-105054

kVA 37.5

CLASS AN

TYPE G

TEMP. RISE °C 80

TEMP. CLASS °C 180

FREQ. Hz 60

IMPEDANCE % @ 100 °C 3.2

ENCL. TYPE -

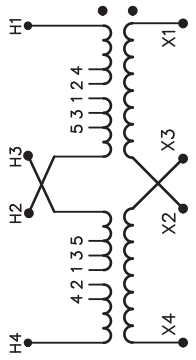
WEIGHT LBS 400

INS. SYSTEM 180-1

SERIAL NO:

LOW VOLTAGE CONNECTION (LINES ON X1 AND X4)

VOLTS	CONNECT
240	X2-X3
120	X1-X3 X2-X4



HIGH VOLTAGE CONNECTION (LINES ON H1 AND H4)

VOLTS	LEFT JUMPER	RIGHT JUMPER	LEG PERCENT	TAPS	CONNECT
504	1-2	1-2	105	H2-H3	H2-H3
492	2-3	1-2	102.5	H2-H3	H2-H3
480	2-3	2-3	100	H2-H3	H2-H3
468	3-4	2-3	97.5	H2-H3	H2-H3
456	3-4	3-4	95	H2-H3	H2-H3
444	4-5	3-4	92.5	H2-H3	H2-H3
432	4-5	4-5	90	H2-H3	H2-H3

TP1 EFFICIENCY

240 VOLTS	1-2	1-2	105	H1-H3
252	2-3	2-3	100	H1-H3
240	3-4	3-4	95	H1-H3
228	4-5	4-5	90	H1-H3

cab1003e



Hammond Power Solutions Inc.

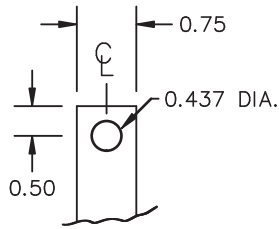
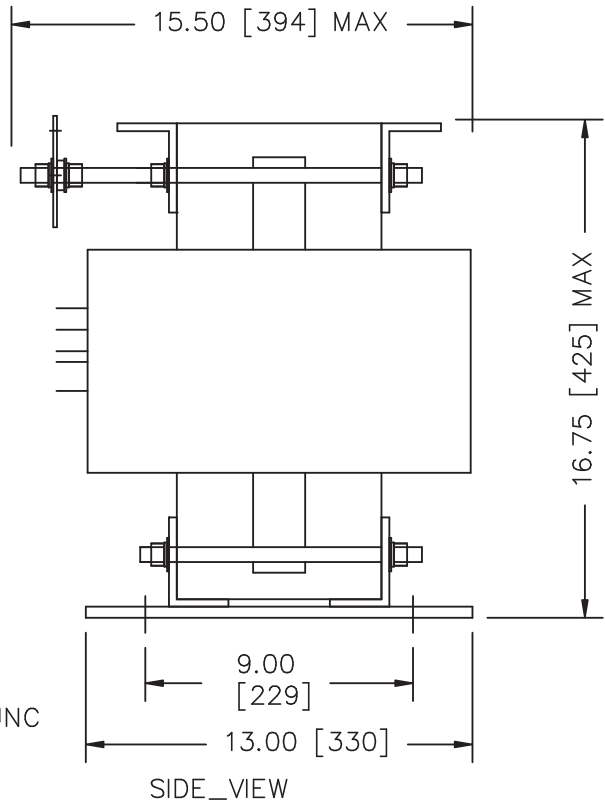
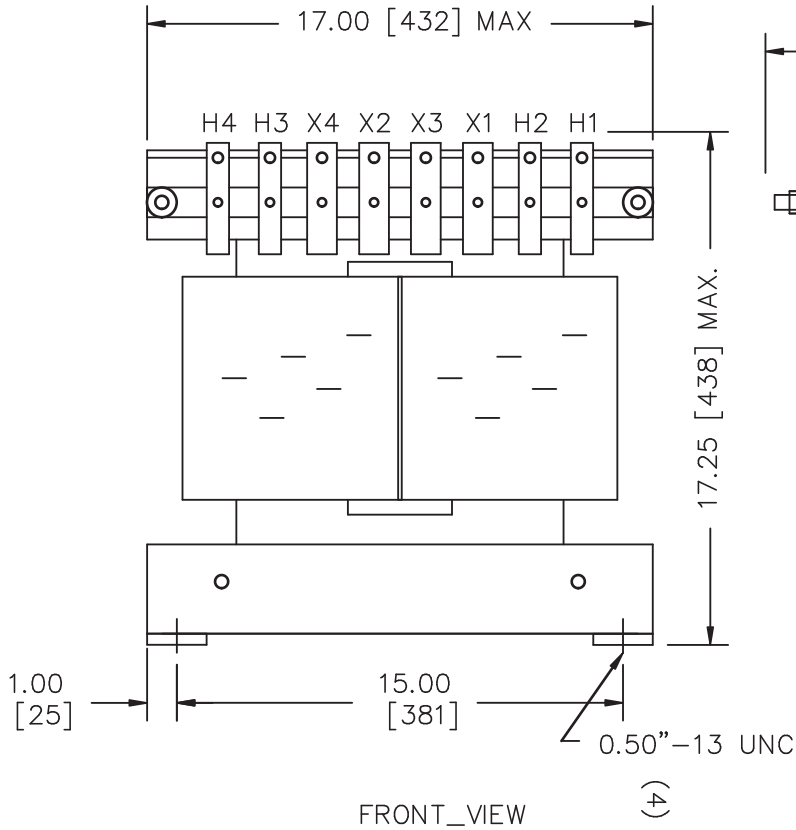
TITLE: 1PH DISTRIBUTION TRANSFORMER NAMEPLATE INFORMATION

1	11/03/03	SC	MOUNTING HOLES REVISED AS PER CUST DWG	DES: MCHRISTM
NO.	DATE	BY	REVISION	DATE: 11/02/16
				SCALE: NTS

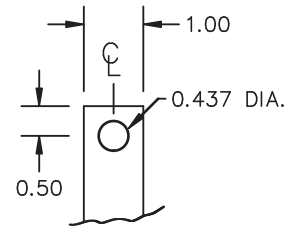
SHEET 1 OF 2

EDB 198710

1.0 mchristman 2011/03/03 09:12



MATERIAL: 1/8" THICK CU.
TIN PLATED



MATERIAL: 1/4" THICK CU.
TIN PLATED



TITLE: 1PH DISTRIBUTION TRANSFORMER
MECHANICAL INFORMATION

1	11/03/03	SC	MOUNTING HOLES REVISED AS PER CUST DWG	DES: MCHRISTM
				DATE: 11/02/16
NO.	DATE	BY	REVISION	SCALE: NTS

SHEET 2 OF 2

EDB 198710

1.0 mchristman 2011/03/03 09:12