

FOR APPROVAL ONLY



Hammond Power Solutions Inc.

TITLE:		1PH DISTRIBUTION TRANSFORMER NAMEPLATE INFORMATION	
NO.	DATE	BY	REVISION

SHEET 1 OF 2
 EDBPN-119351
 0.1 root 2012/01/11 13:40

SINGLE PHASE DRY TYPE TRANSFORMER
ALLEN-BRADLEY
 MILWAUKEE, WI. USA

LR3902

E112313

P/N PN-119351

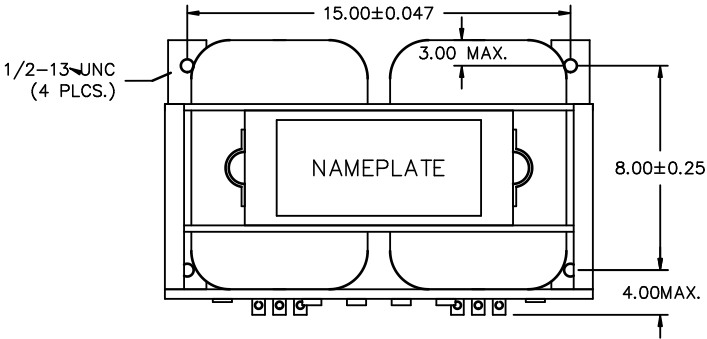
HIGH VOLTAGE CONNECTION (LINES ON H1 AND H4)					
VOLTS	LEFT JUMPER	RIGHT JUMPER	LEG PERCENT	TAPS	CONNECT
480	1-2	1-2	105	H2-H3	H2-H3
492	2-3	1-2	102.5	H2-H3	H2-H3
480	2-3	2-3	100	H2-H3	H2-H3
468	3-4	2-3	97.5	H2-H3	H2-H3
456	3-4	3-4	95	H2-H3	H2-H3
444	4-5	3-4	92.5	H2-H3	H2-H3
432	4-5	4-5	90	H2-H3	H2-H3
240					
252	1-2	1-2	105	H1-H4	H1-H4
240	2-3	2-3	100	H1-H4	H1-H4
228	3-4	3-4	95	H1-H4	H1-H4
216	4-5	4-5	90	H1-H4	H1-H4

LOW VOLTAGE CONNECTION (LINES ON X1 AND X4)		
VOLTS	CONNECT	CONNECT
240	X2-X3	X1-X3
120	X1-X3	X2-X4

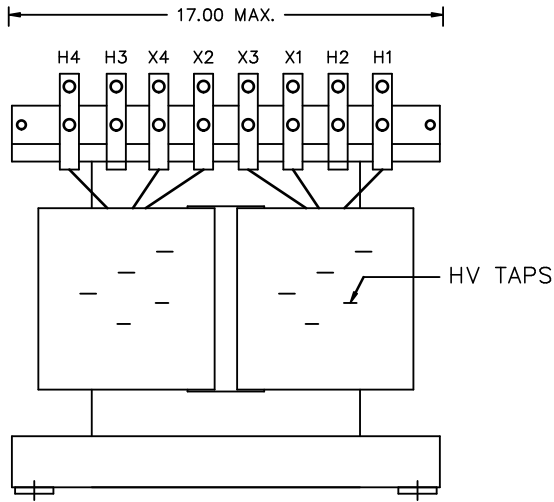
KVA	50
CLASS	AN
TYPE	G
TEMP. RISE °C	80
TEMP. CLASS °C	180
FREQ. Hz	60
IMPEDANCE % @ 100 °C	2.8
ENCL. TYPE	-
WEIGHT LBS	450
INS. SYSTEM	180-1
SERIAL NO:	

cab 1003e

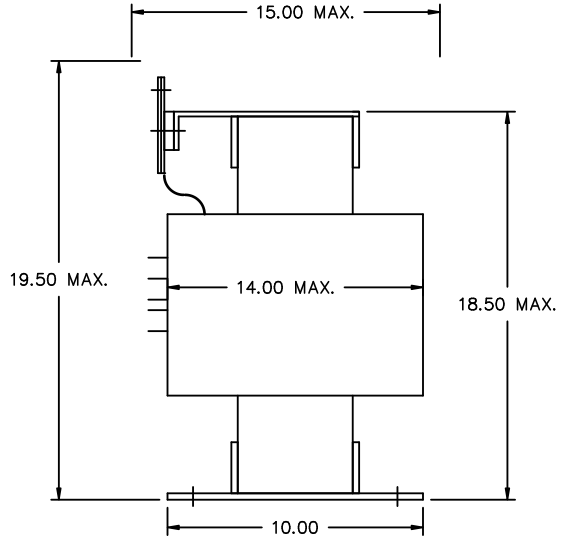
FOR APPROVAL ONLY



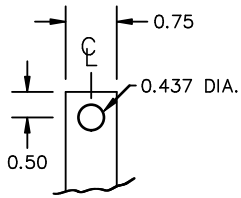
PLAN VIEW



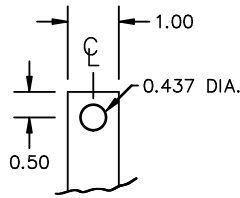
FRONT VIEW



SIDE VIEW



MATERIAL: 1/8" THICK CU.
TIN PLATED
HV TERMINAL DETAIL



MATERIAL: 1/4" THICK CU.
TIN PLATED
LV TERMINAL DETAIL

NOTES : ADHESIVE TERMINAL LABELS LOCATED ON TERMINAL SUPPORT BOARD.
EXTRA HOLES ON BASE PLATE FOR MOUNTING TO SHIPPING SKID.



Hammond Power Solutions Inc.

TITLE: 1PH DISTRIBUTION TRANSFORMER
MECHANICAL INFORMATION.

				DES: RBHATIA
				DATE: 12/01/10
NO.	DATE	BY	REVISION	SCALE: NTS

SHEET 2 OF 2

EDBPN-119351

0.1 root 2012/01/11 13:40