

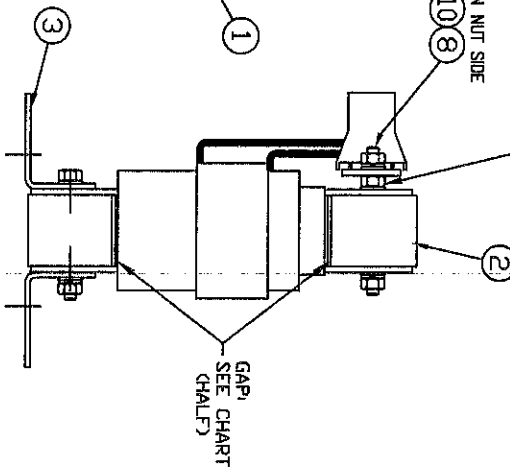
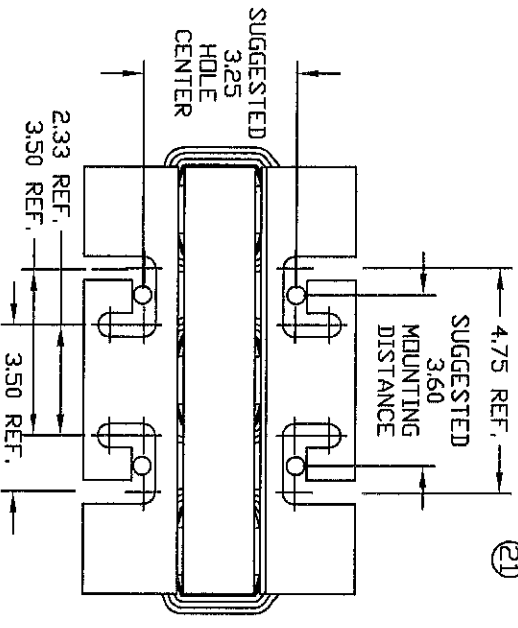
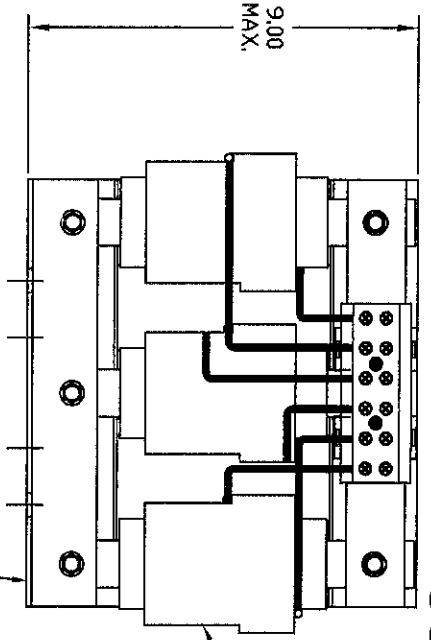
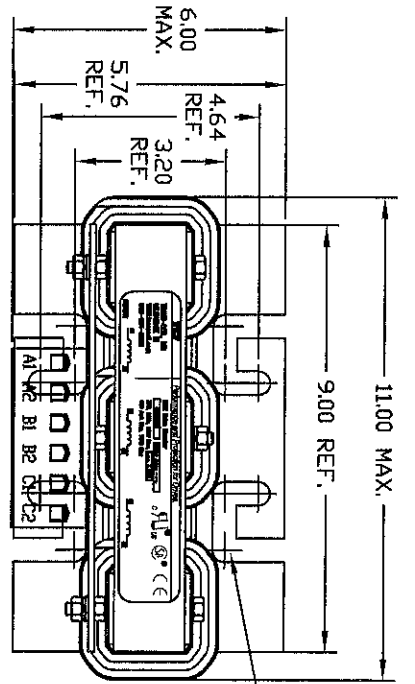
HG7 "CP" Version Parts List - 480 Volt

Trap P/N	Outline Drawing	Line Reactor (LR)	Tuning Reactor (TR)	Capacitor	Cap Qty	Cap Bracket	Fuse Size (1)	LR to TR Wire Size	TR to Cap Wire Size (1)	Heat loss in Watts	Standard Open Panel Size (1)
HG8AW00CP	102535DG	KDRC1T	KTR3A65HG	KCAP3A6A	1	KCAPBKT1A	KTK-R-10	#12	#10	200	19.75 x 17 x 6.5
HG10AW00CP	102536DG	KDRE1T	KTR3A65HG	KCAP3A6A	1	KCAPBKT1A	KTK-R-10	#12	#10	200	"
HG15AW00CP	102537DG	KDRF1T	KTR5A65HG	KCAP5A6A	1	KCAPBKT1A	KTK-R-15	#12	#10	275	19.75 x 17 x 8.0
HG20AW00CP	102538DG	KDRF2T	KTR6A65HG	KCAP3A6A	2	KCAPBKT2A	KTK-R-15	#10	#10	300	"
HG25AW00CP	102539DG	KDRF3T	KTR8A65HG	KCAP5A6A	1	KCAPBKT2A	KTK-R-20	#10	#10	325	"
HG30AW00CP	102540DG	KDRH1T	KTR10A65HG	KCAP10A6A	1	KCAPBKT1B	KTK-R-30	#10	#10	375	30.75 x 17 x 9.25
HG40AW00CP	102541DG	KDR11T	KTR15A65HG	KCAP15A6A	1	KCAPBKT1B	KTK-R-30	#8	#10	625	"
HG50AW00CP	102542DG	KDRG1T	KTR15A65HG	KCAP15A6A	1	KCAPBKT1B	KTK-R-30	#6	#10	650	"
HG60AW00CP	102543DG	KDRG2T	KTR20A65HG	KCAP20A6A	1	KCAPBKT1B	JJS-40	#6	#10	825	"
HG75AW00CP	102544DG	KDRG3T	KTR25A65HG	KCAP10A6A	1	KCAPBKT2B	JJS-60	#8	#10	950	"
HG100AW00CP	102545DG	KDRJ1T	KTR30A65HG	KCAP15A6A	2	KCAPBKT2B	JJS-60	#8	#10	975	"
HG125AW00CP	102546DG	KDRL1T	KTR40A65HG	KCAP20A6A	2	KCAPBKT2B	JJS-80	#6	#10	1150	56 x 17 x 12
HG150AW00CP	102547DG	KDRL2T	KTR45A65HG	KCAP15A6A	3	KCAPBKT4B	JJS-100	#4	#10	1450	56 x 17 x 12.5
HG200AW00CP	102548DG	KDRS1T	KTR60A65HG	KCAP20A6A	3	KCAPBKT4B	JJS-125	#2	#10	1775	67 x 17 x 14
HG250AW00CP	102549DG	KDRS2T	KTR75A65HG	KCAP15A6A	1	KCAPBKT4B	JJS-175	1/0	#10	2050	"
HG300AW00CP	102550DG	KDRX1T	KTR90A65HG	KCAP20A6A	4	KCAPBKT4B	JJS-200	1/0	#10	2500	67 x 17.5 x 14
HG350AW00CP	102551DG	KDRX2T	KTR105A65HG	KCAP10A6A	1	KCAPBKT1B	JJS-225	2/0	#10	2725	"
HG400AW00CP	102680DG	KDRX3T	KTR120A65HG	KCAP20A6A	6	KCAPBKT4B KCAPBKT2B	JJS-250	3/0	#10	3100	40 x 40 x 20
HG450AW00CP	102682DG	KDRX4T	KTR150A65HG	KCAP20A6A KCAP10A6A	7 1	KCAPBKT4B (2 Pos)	JJS-300	4/0	#10	3350	"
HG500AW00CP	102684DG	KDRX5T	KTR150A65HG	KCAP20A6A KCAP10A6A	7 1	KCAPBKT4B (2 Pos)	JJS-300	4/0	#10	3500	"
HG600AW00CP	102686DG	KDRY1T	KTR180A65HG	KCAP20A6A	9	KCAPBKT4B (2 Pos) KCAPBKT1B	JJS-400	2-1/0	#10	3500	45 x 45 x 24
HG700AW00CP	102688DG	KDRY2T	KTR210A65HG	KCAP20A6A KCAP10A6A	10 1	KCAPBKT4B (3 Pos)	JJS-450	2-2/0	#10	3600	"
HG800AW00CP	102690DG	KDRY3T	KTR240A65HG	KCAP20A6A	12	KCAPBKT4B (3 Pos)	JJS-500	2-3/0	#10	3900	"
HG900AW00CP	102692DG	KDRY4T	KTR270A65HG	KCAP20A6A KCAP10A6A	13 1	KCAPBKT4B (3 Pos) KCAPBKT2B	JJS-600	2-3/0	#10	4200	"

(1) For panel builders reference only when wiring to TCI circuit design. Item is not provided in HG7 "CP" package.

Schematic drawing for 60 HP and less is 25077. For filters > 60 HP is 25078.

HP	CATALOG NO	GAP	GAP ITEM #	VOLTS(V)	---MH ±20%	---AMPS(A)	APPROX WT-LBS
30	KDRHIT	.130	13, 14	48.0	1.84	40	40



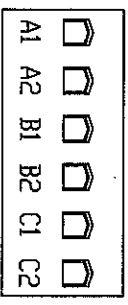
TRANS-COIL, INC
MILWAUKEE, WI
WWW.TRANS-COIL.COM
800-824-8282

KDR Drive Reactor
CIRCUIT BREAKER
3PH, 50HZ, 500V Max. 400 Amps Max. 115C Rise

Performance and Protection for Drives

UL US SA CE

NOTE: A1, A2, B1, B2, C1, C2, TERMINAL BLOCK FOR REFERENCE ONLY.



TERMINAL BLOCK
TORQUE(LB-IN)=CUSTOMER WIRE

35 = 1 AWG THRU 4 AWG
30 = 6 AWG THRU 14 AWG
25 = 16 AWG THRU 22 AWG

STRIP-18	1.5 STACK	HI-POT VOLT	2650	VAC	468-2
----------	-----------	-------------	------	-----	-------

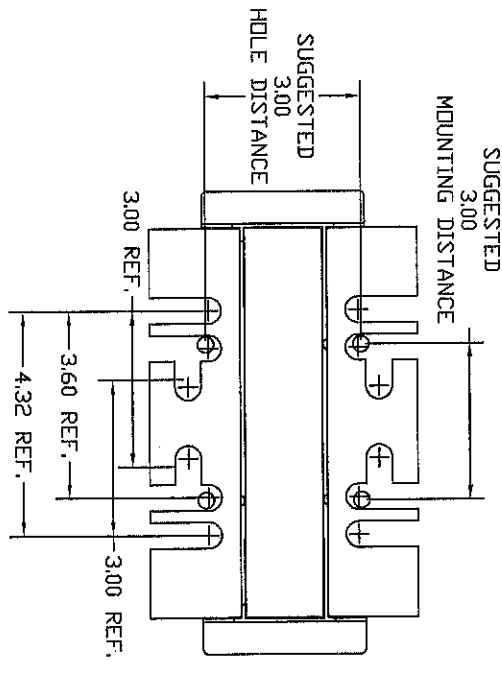
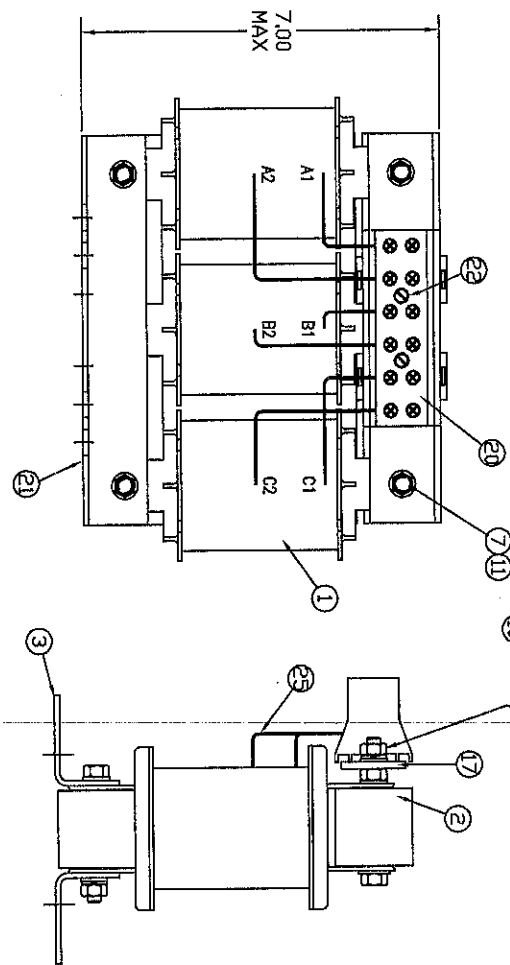
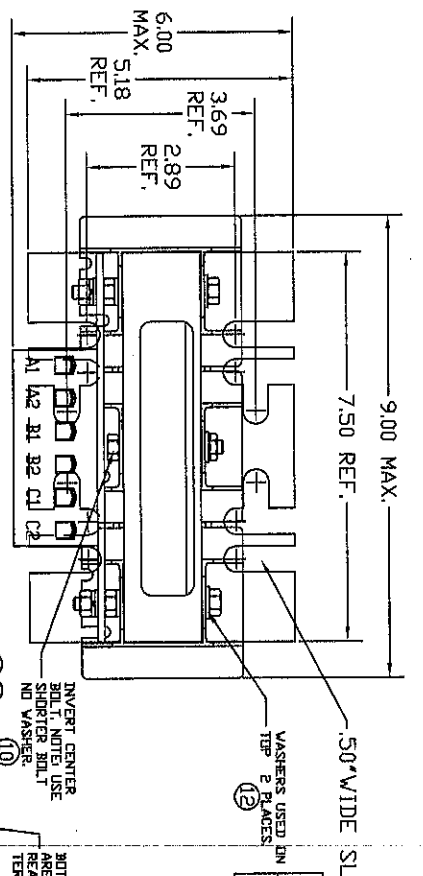
NO.	REVISION	DATE	BY	± 1/2"	DATE	BY	± 1/2"

TEL: 800-824-8282
WWW.TRANS-COIL.COM
800-824-8282

TGI
7878 N. 86th STREET
MILWAUKEE, WI 53224

KDR (FRAME H)
KDRHIT, 30HP, 480V, 10%
DATE: 02/01/05
SCALE: 1/2"=1"

102423
C

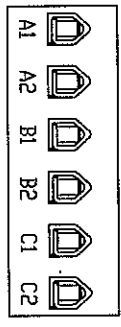


CATALOG NO	MEASURED GAP	GAP ITEM #	VOLTS(V)	PHASE	APPROX WT-LBS
KTR10A65HG	.090	13	34.56	±8% -2%	15
			2.767		19.13

TRANS-COIL, INC.
MILWAUKEE, WI
WWW.TRANS-COIL.COM
800-524-0282

Performance and Protection for Drives.
KTR Tuning Reactor
UL LISTED
480V Amps, 480V Volts, 1150 Poles

UL **CSA** **CE**

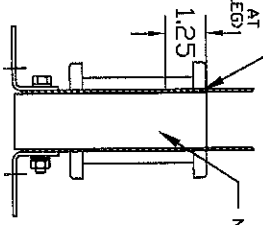


NOTE: A1, A2, B1, B2, C1, C2 MARKINGS ON COIL AND TERMINAL BLOCK FOR REFERENCE ONLY.

TERMINAL BLOCK
TORQUE (LB-IN)=CUSTOMER WIRE

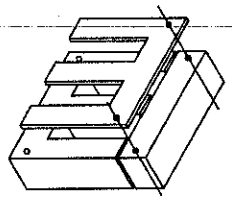
35 = 1 AWG THRU 4 AWG
30 = 6 AWG THRU 14 AWG
25 = 16 AWG THRU 22 AWG

NOTE: THIS IS A 3IN ITEM.
ADD .50 X 1.47 STEEL WEDGE
(.18 GA. .094) AT THE OPEN END
OF THE 7/8" SO THAT THE
LAMINATIONS ARE TIGHT AT
THE TOP. (OPER LEGS)



NOTE: 7/8" LAMINATIONS MUST FILL THE ROSSIN COMPLETELY. (VERY TIGHT)

*1/8" LAMINATION TO BE INSERTED FROM THE TOP FOR GROUNDING

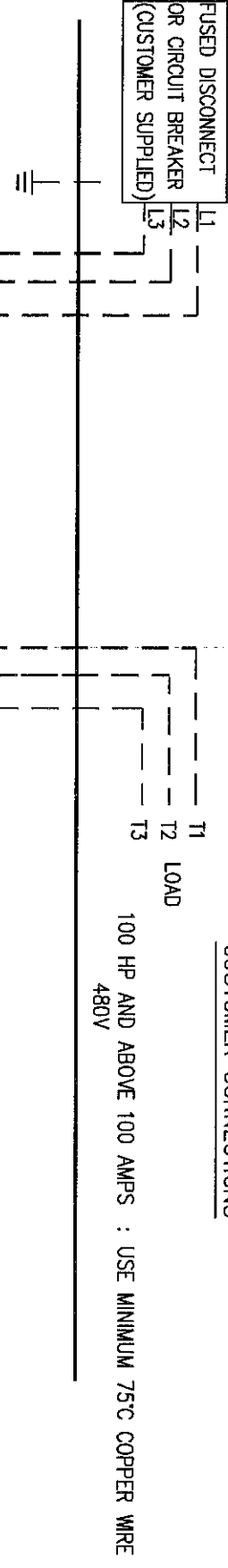


STANDARD EI-15
15 STACK

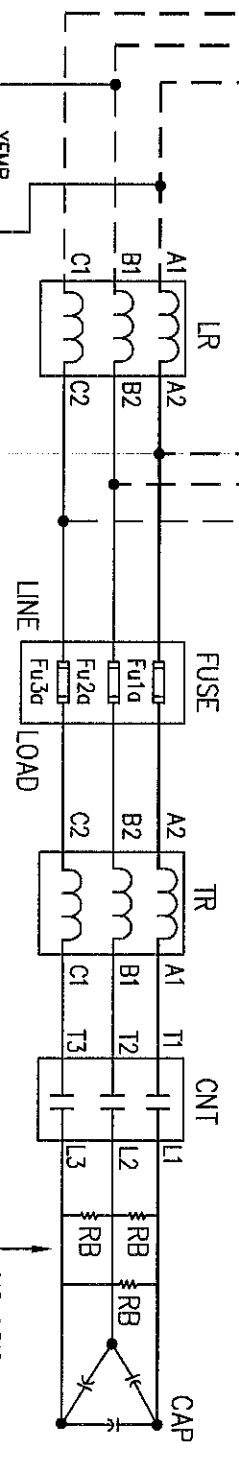
HI-POT VOLT	VAC
2650	468-2

TOLERANCES DIMENSIONS IN INCHES		TRAP REACTOR KTR10A65HG, 30HP, 480V	
B.2661 ADD CE TO LABEL	2/24/10 DSW	XX ±.03	DATE: 01/31/05
A.2565 TOLERANCE CHG.	11/13/08 DSW	XXX ±.01	SCALE: TO FIT
NO	REVISION	DATE	BY
		11/13/08	DSW
		1/2	
7878 N. 85th STREET MILWAUKEE, WI 53224		C 102293	

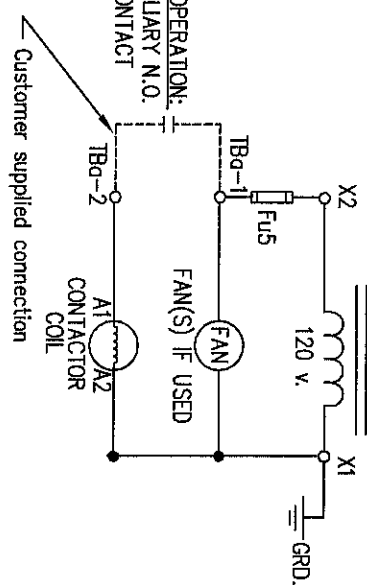
480V. OR
60 HZ.
LINE
FUSED DISCONNECT
OR CIRCUIT BREAKER
(CUSTOMER SUPPLIED)



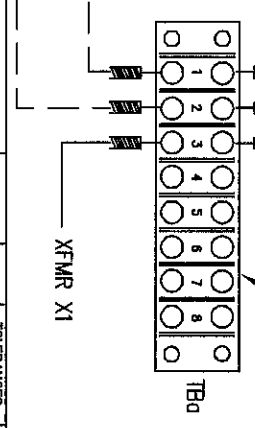
CUSTOMER CONNECTIONS



NOTE 1:
FOR PROPER OPERATION:
CONNECT AUXILIARY N.O.
RUN RELAY CONTACT
FROM DRIVE



SEE NOTE 1



		TOLERANCES (EXCEPT AS NOTED)		7878 N. 86th STREET MILWAUKEE, WI 53224	
		.XX ±.01			
		.XXX ±.005			
		FRACTIONAL ± 1/32		HG7 SCHEMATIC 480V STC	
TITLE WAS "100 HP AND ABOVE"		5/19/09RJC		DATE 6/26/08	
REVISION		BY		SCALE 3/16	
		NO		DATE 6/26/08	
				DWG. NO. B 26690	
				SHT. 1 OF 1	