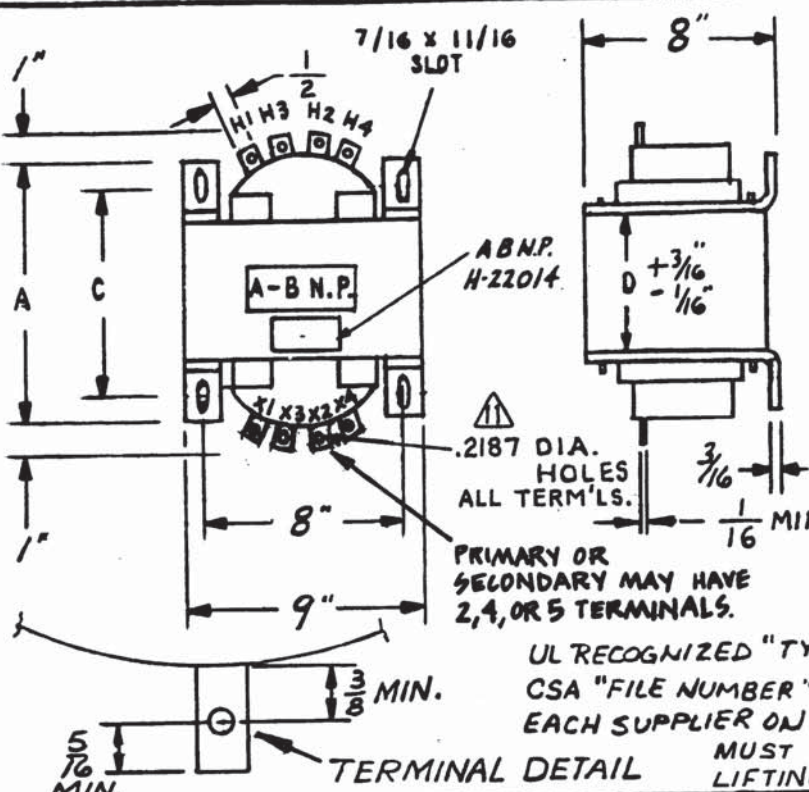


CHANGE NUMBER	
1	1521-60
2	1559-61
3	235-63
4	876-64
5	1311-64
6	1535-68
7	3058-79
8	3074-81
9	3074A-81
10	2448-86
11	3462-88
12	2028-90
13	6122-96



A-B NAMEPLATE H-18969  
 STAMP NAMEPLATE WITH CATALOG OR PART NUMBER, PRIM. & SEC. VOLTAGES AND CYCLES, AND KVA AS SHOWN.

ALLEN-BRADLEY NAMEPLATE FURNISHED TO SUPPLIER ON REQUEST. NAMEPLATE TO BE STAMPED BY SUPPLIER AS DIRECTED AND MOUNTED ON THE TRANS. TO READ FROM THE SECONDARY SIDE.

1/2" MINIMUM SPACING BETWEEN ADJACENT TERM. & BETWEEN TERM. AND GROUND MEASURED ON COIL SURFACE.

FLAT BLACK FINISH OVER ENTIRE TRANSFORMER.

IDENTIFY ALL TERMINALS ON SIDE OF COIL.

UL RECOGNIZED "TYPE" DESIGNATION AND CSA "FILE NUMBER" MUST BE STAMPED BY EACH SUPPLIER ON ALLEN-BRADLEY NAMEPLATE. MUST COMPLY WITH UL 506 LIFTING MEANS REQUIREMENT.

PART NUMBER	KVA	CH. UL	VOLTAGES		HERTZ	A	B	C	D	REMARKS
			PRIM.	SEC.						
X-231636	5.0	G	220/440	110	60	10		8-3/4	6	
X-231637	5.0	G	220	110/220	60	10		8-3/4	6	
X-231638	5.0	G	440	110/220	60	10		8-3/4	6	
X-231639	5.0	G	240	120/240	60	10		8-3/4	6	
X-231640	5.0	G	480	120/240	60	10		8-3/4	6	
X-231641	5.0	G	264/240/228/216	120/240	60	10		8-3/4	6	
X-231642	5.0	G	220/440	110/95/80/65	60	10		8-3/4	6	
X-231643	5.0	G	220/208	110	60	10		8-3/4	6	
X-231644	5.0	G	240/480	120/240	60	10		8-3/4	6	
X-231645	5.0	G	220/440	110/95/80/65	50	10-5/8		9-3/8	6-5/8	
X-231646	5.0	G	550	110/220	60	10		8-3/4	6	
X-231647	5.0	G	230/460	120/240	60	10		8-3/4	6	
X-231648	5.0	J	240/480	120	60	10		8-3/4	6	
X-231649	5.0	H	220 440	120	60	10		8-3/4	6	
X-231650										
X-231651										
X-231652										
X-231653										
X-231654										
X-231655										

(REDRAWN: SAME NO. "A" SIZE  
 5-12-60)

THIS DRAWING IS THE PROPERTY OF THE ALLEN-BRADLEY CO. INC. AND MAY NOT BE COPIED, USED OR DISCLOSED FOR ANY PURPOSE EXCEPT AS AUTHORIZED IN WRITING BY THE ALLEN-BRADLEY CO. INC.

* IN STOCK	CONTROL TRANSFORMER		X-231636-655
Y	5.0KVA FRAME SIZE	EQUIVALENT TO HEVI-DUTY 520	O.K. BY
SK-	CONTROL TRANSFORMER DESIGN		DATE 5-12-60
SUP X-148930-34	ALLEN-BRADLEY COMPANY		1 SHEETS SHEET NO. 1
X-184054-58	MILWAUKEE WISCONSIN		
PART OF X-			