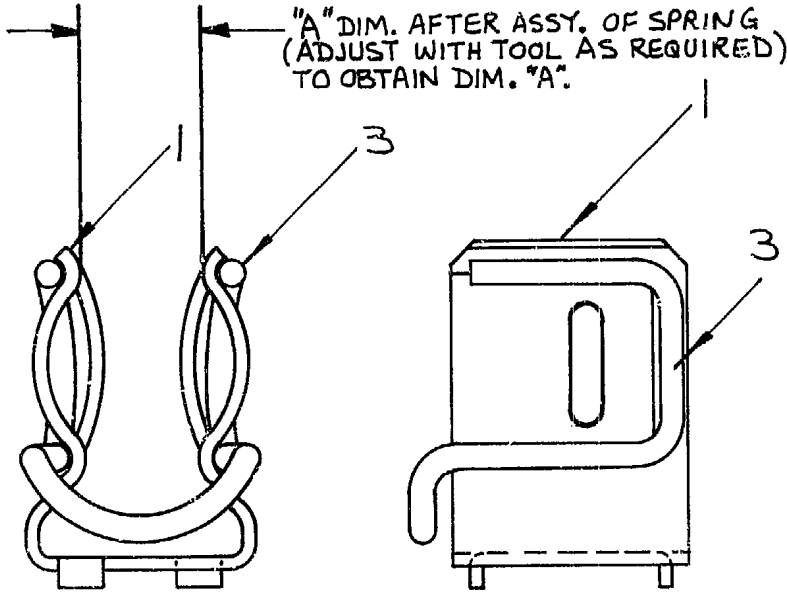


CLASSIFICATION TABLE					
CHARACTERISTIC OR DIMENSION	COMMENT	DRAWING LOCATION (ZONE)	◇	◇	Ⓟ
"A" DIM.			X		

P = PERFORMANCE, F = FIT, A = ASSEMBLY (USE ONLY WITH ◇ SYMBOL)
 X = IDENTIFIES APPLICABLE CLASSIFICATION(S)
 ◇ = REQUIRED BY ENGINEERING AND/OR MANUFACTURING
 Ⓟ = STRICT CONFORMANCE TO SPECIFICATION REQUIRED AND IS NOT NEGOTIABLE (MAY BE REQUIRED BY REGULATORY AGENCY)



ITEM	PART NO.	MATERIAL	AMT.
1	SEE TABLE	FUSE CLIP	1
2			
3	SEE TABLE	SPRING	1
4			
5			
6			
7			
8			
9			
10			
11			
12			
13			
14			
15			
16			
17			
18			
19			

SYMBOL	CHG LTR	ITEM-1 FUSE CLIP	ITEM-3 SPRING	REMARKS	"A" DIM. ◇
X-344411	B	G-15764	B-36270	30A-250V	.328 ±.04
X-344412	C	40023-095-02	B-36271	30A-600V 60A-250V	.59 ±.03
X-344413	B	G-15766	B-36272	60A-600V	.515 ±.05

THIS DRAWING IS THE PROPERTY OF
 THE ALLEN-BRADLEY CO. INC.
 AND MAY NOT BE COPIED, USED OR
 DISCLOSED FOR ANY PURPOSE EXCEPT
 AS AUTHORIZED IN WRITING BY
 THE ALLEN-BRADLEY CO. INC.

INSIDE DIMENSIONS OF CABINET		
WIDTH	HEIGHT	DEPTH

CHANGE		REFERENCES	ALLEN-BRADLEY CO.		PRODUCTION	DESIGN	
LTR.	NUMBER		MILWAUKEE, WISCONSIN		PRODUCT LINE	SERIES	
A	2366C-65	Z-29481-84	FUSE CLIP ASSEMBLY		1494		
1	2304-76	Z-29486-89			SHEET	OF	DWG. SIZE
2	1597-82	Z-29494-97			1	1	A
3	1971-90		30A-250V, 30A-600V 60A-250V, 60A-600V		DWG. NO. X-344411-13		
		DR. L. P.	CHKD.	DATE	3-21-66		