

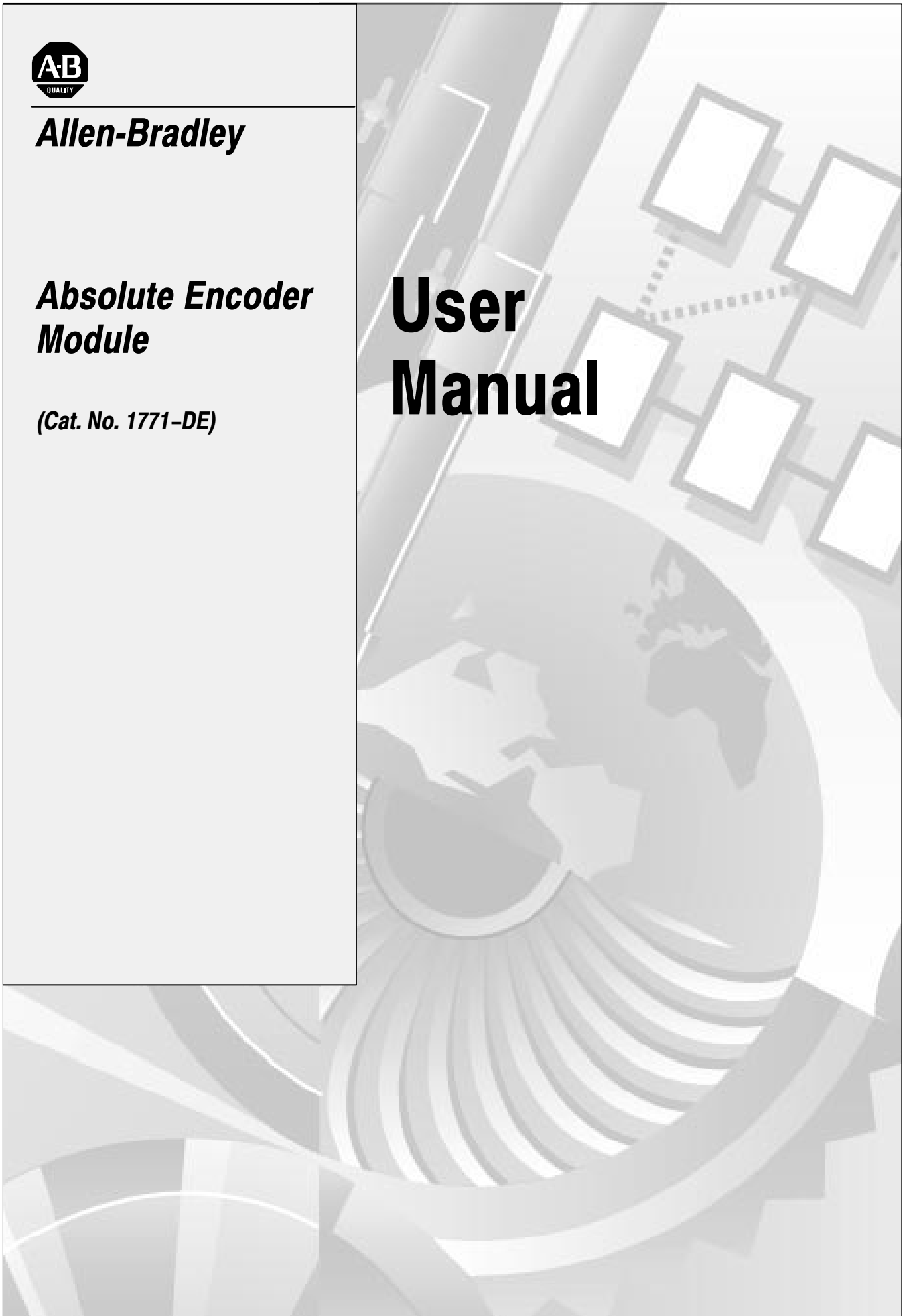


***Allen-Bradley***

***Absolute Encoder  
Module***

***(Cat. No. 1771-DE)***

# **User Manual**



# Table of Contents

---

<b>Using This Manual</b> .....	<b><a href="#">1-1</a></b>
Chapter Objectives .....	<a href="#">1-1</a>
What This Manual Contains .....	<a href="#">1-1</a>
Audience .....	<a href="#">1-1</a>
Warnings and Cautions .....	<a href="#">1-2</a>
Summary .....	<a href="#">1-2</a>
<b>Introducing the Absolute Encoder Module</b> .....	<b><a href="#">2-1</a></b>
Chapter Objectives .....	<a href="#">2-1</a>
Example Applications .....	<a href="#">2-1</a>
Module Functions .....	<a href="#">2-1</a>
Compatible Processors .....	<a href="#">2-2</a>
Compatible Encoders .....	<a href="#">2-2</a>
State of Outputs Upon Loss of Input Power .....	<a href="#">2-2</a>
Module Description .....	<a href="#">2-3</a>
Electrostatic Discharge .....	<a href="#">2-5</a>
Specifications .....	<a href="#">2-6</a>
Summary .....	<a href="#">2-7</a>
<b>Configuring and Installing Your Module</b> .....	<b><a href="#">3-1</a></b>
Chapter Objectives .....	<a href="#">3-1</a>
Electrostatic Discharge .....	<a href="#">3-1</a>
Setting Configuration Plugs .....	<a href="#">3-1</a>
Response to External Fault .....	<a href="#">3-4</a>
Keying .....	<a href="#">3-4</a>
Power Requirements .....	<a href="#">3-5</a>
Wiring-Arm Connections .....	<a href="#">3-8</a>
Installing the Module .....	<a href="#">3-11</a>
<b>Module/Processor Communication</b> .....	<b><a href="#">4-1</a></b>
Chapter Objectives .....	<a href="#">4-1</a>
Block Transfer .....	<a href="#">4-1</a>
Block-transfer-write Data .....	<a href="#">4-1</a>
Write-Data Throughput Time .....	<a href="#">4-4</a>
Block-transfer-read Data .....	<a href="#">4-4</a>
Programming Example .....	<a href="#">4-5</a>
Programming Considerations .....	<a href="#">4-7</a>
Summary .....	<a href="#">4-7</a>

<b>Offset Feature</b> .....	<b><a href="#">5-1</a></b>
Offset Feature .....	<a href="#">5-1</a>
Offset Words .....	<a href="#">5-2</a>
Programming Considerations with Offset .....	<a href="#">5-6</a>
<b>Troubleshooting</b> .....	<b><a href="#">6-1</a></b>
Chapter Objectives .....	<a href="#">6-1</a>
Causes of Block-transfer Errors .....	<a href="#">6-1</a>
Errors Indicated by Diagnostic Bits .....	<a href="#">6-2</a>
Summary .....	<a href="#">6-2</a>
Block-transfer Timing .....	<a href="#">A-1</a>
Block-transfer Timing for PLC-2 Family Processors .....	<a href="#">A-1</a>
Block-transfer Timing for PLC-3 Family Processors .....	<a href="#">A-8</a>
Application Considerations .....	<a href="#">B-1</a>
Application Considerations .....	<a href="#">B-1</a>
<b>Block-transfer Ladder Diagram Examples</b> .....	<b><a href="#">C-1</a></b>
Bidirectional Block-transfer for PLC-2 Family Processors .....	<a href="#">C-1</a>
Bidirectional Block-transfer for PLC-3 Processors .....	<a href="#">C-4</a>
Read-only Block-transfer for PLC-2 Family Processors .....	<a href="#">C-6</a>
<b>Bit and Word Descriptions of Block-transfer Data</b> .....	<b><a href="#">D-1</a></b>
Block-transfer-write Data .....	<a href="#">D-1</a>
Block-transfer-read Data .....	<a href="#">D-2</a>
<b>Connection Diagrams for Allen-Bradley Encoders</b> .....	<b><a href="#">E-1</a></b>
Connection Diagrams for Allen-Bradley Encoders .....	<a href="#">E-1</a>
0 to 359-count, 10-bit, BCD, Single-ended Output .....	<a href="#">E-1</a>
0 to 255-count, 8-bit, Standard Gray, Single-ended Output .....	<a href="#">E-3</a>
0 to 359-count, 10-bit, BCD, Single-ended Output, Latching .....	<a href="#">E-4</a>
<b>Glossary</b> .....	<b><a href="#">F-1</a></b>

## Using This Manual

### Chapter Objectives

Read this chapter to familiarize yourself with this manual. It tells you how to use the manual properly and efficiently.

### What This Manual Contains

This manual contains 5 chapters and 6 appendices:

Chapter/ Appendix	Title	What's Covered
1	Using This Manual	Manual's purpose, audience, and contents
2	Introducing the Absolute Encoder Module	Module description, features, and hardware components
3	Configuring and Installing Your Module	Feature selection and installation procedures
4	Module/Processor Communication	Words and file parameters of block-transfer data
5	Offset Feature	Programming to compensate for shaft offset
6	Troubleshooting	Troubleshooting guide
A	Block-transfer Timing	Instructions for determining block-transfer timing
B	Application Consideration	Encoder shaft speed
C	Block-transfer Ladder Diagram Examples	Examples of block-transfer programming
D	Bit and Word Description of Block-transfer Data	Details of block-transfer file data
E	Glossary	
F	Index	

### Audience

In this manual we assume that you know how to:

- program and operate an Allen-Bradley programmable controller
- program block-transfer instructions

If you do not know how to do either of these, read the user's manual of your processor. Refer to our Publications Index (publication SD499) for a complete list of publications.

## **Warnings and Cautions**

Throughout this manual we include special notes to alert you to possible injury to personnel or damage to equipment under specific circumstances.



**WARNING:** tells you when people may be injured if procedures are not followed properly.

---



**CAUTION:** tells you when machinery may be damaged if procedures are not followed properly.

---

## **Summary**

This chapter told you how to use this manual efficiently. The next chapter introduces you to the absolute encoder module.

## Introducing the Absolute Encoder Module

### Chapter Objectives

This chapter describes:

- example applications of the absolute encoder module
- functions of the module
- Allen-Bradley processors compatible with the absolute encoder module
- encoders you can use with the module
- module specifications

### Example Applications

The absolute encoder module is usually used for:

- absolute-position feedback
- high-speed response to position based on encoder values
- immunity to loss of position from power loss or power interruptions

### Module Functions

The Absolute Encoder Module (cat. no. 1771-DE) is an intelligent module that provides high-speed response to machine position independently of the programmable controller scan. It can:

- monitor the position of an absolute encoder that has up to 12 bits
- control up to eight high-current outputs based on comparisons between encoder position and your preset values
- provide throughput for all eight outputs in less than 200 us
- communicate with the programmable controller through block transfers
- return the status of outputs and the position of an absolute encoder to the programmable controller

In addition, the module can switch 2A DC per output with no derating when all outputs are on, allowing 16A continuous per module.

### **Compatible Processors**

You can use the absolute encoder module with any Allen-Bradley programmable controller that uses block-transfer programming in both local and remote 1771 I/O systems. Processors that are compatible with the module include:

- Mini PLC-2 (cat. no. 1772-LN3)
- PLC-2/20 (cat. no. 1772-LP1, -LP2)
- PLC-2/30 (cat. no. 1772-LP3)
- PLC-3 (cat. no. 1775-L1, -L2)
- Mini-PLC-2/15 (cat. no. 1772-LV)
- Mini-PLC-2/05 (cat. no. 1772-LS, -LSP)

### **Compatible Encoders**

You can use Allen-Bradley absolute encoders that use up to 12 bits with the absolute encoder module. Allen-Bradley encoders with the following bulletin numbers are compatible with the absolute encoder module:

- Bulletin 845A
- Bulletin 845B
- Bulletin 845C

The module is also compatible with absolute encoders that have the following specifications:

- single-ended or differential encoder output signals
- TTL-compatibility (output drivers)
- capability of sinking 11mA (single-ended) or 18mA (differential) per channel
- BCD, natural binary, or standard Gray code format

### **State of Outputs Upon Loss of Input Power**

You can select the state in which the outputs will be if the module loses input power. A configuration plug on the right printed-circuit board allows the outputs to:

- turn off
- remain in their state at loss of input power

## Module Description

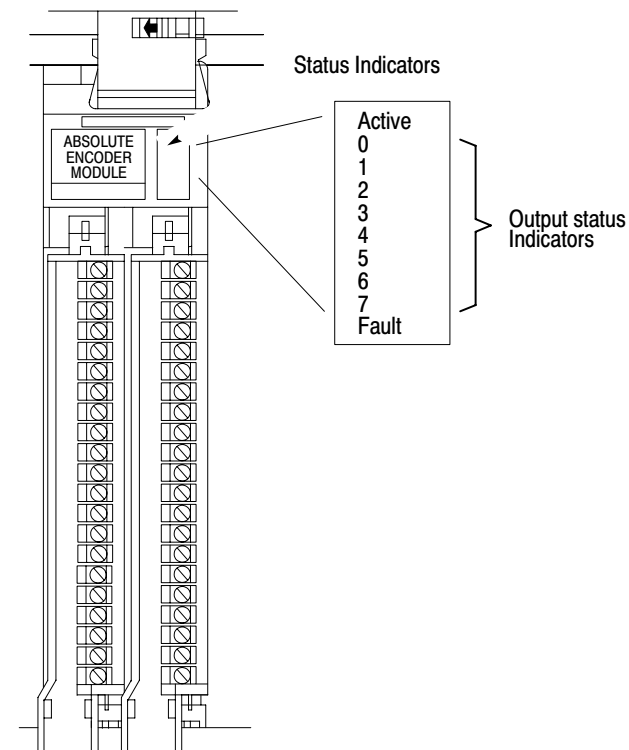
The next four sections give a description and specifications of the absolute encoder module.

### Status Indicators

The module has 10 LED status indicators (Figure 2.1):

- Eight output status indicators (one for each output) light when the corresponding output circuitry is energized.
- One green ACTIVE indicator lights when the module is powered and functioning.
- One red FAULT indicator lights when the module detects a fault and momentarily lights at power-up.

**Figure 2.1**  
Status Indicators

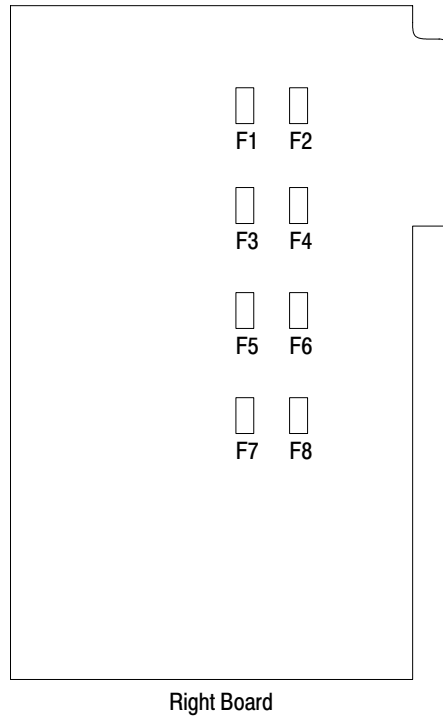


### Output Fuses

The module has eight 3A rectifier fuses (one per output) located on the right printed-circuit board. Figure 2.2 shows the fuse locations.



**Figure 2.2**  
**Fuse Locations**



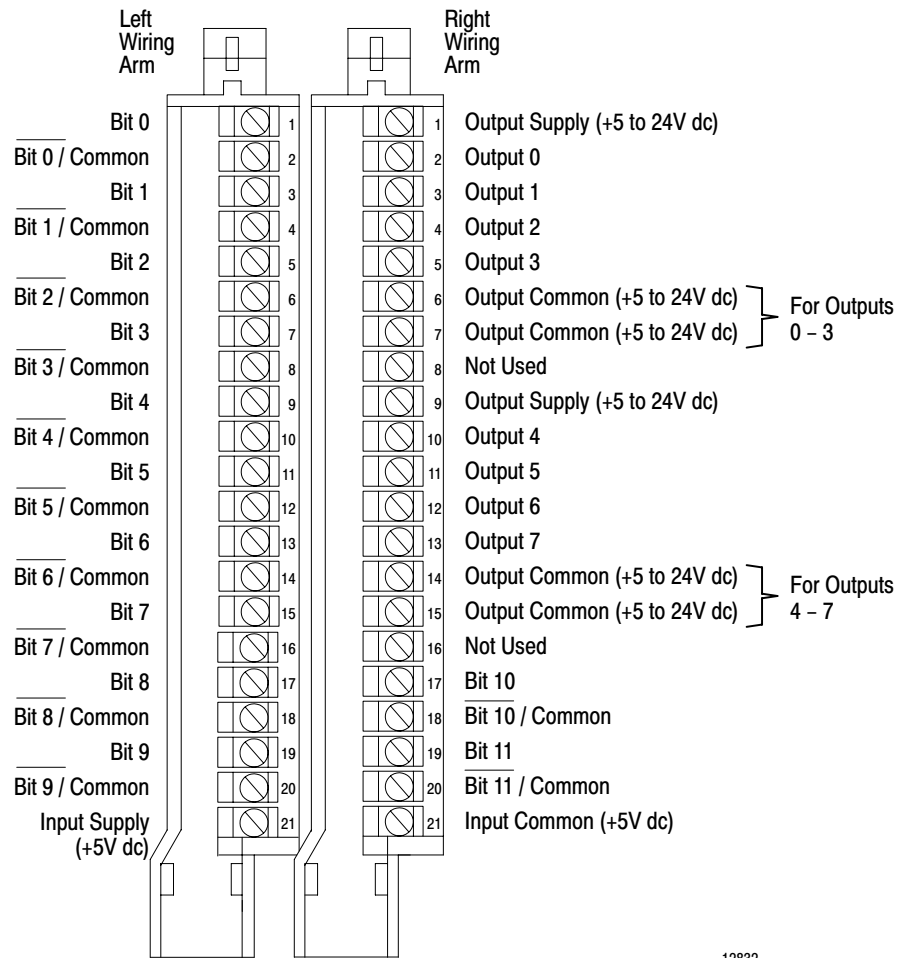
13303

### **Terminal Identification**

Figure 2.3 identifies each terminal of the absolute encoder module. The bit  $\bar{x}$ /common terminals refer to:

- not bit  $x$  terminals (uses with differential output encoders)  
or
- common terminals (used with single-ended output encoders)

**Figure 2.3**  
**Terminal Identification**



12832

## Electrostatic Discharge

Electrostatic discharge can damage integrated circuits or semiconductors in this module if you touch backplane connector pins. It can also damage the module when you set configuration plugs or switches inside the module. Avoid electrostatic discharge by observing the following precautions:

- Touch a grounded object to discharge yourself before handling the module.
- Do not touch the backplane connector or connector pins.
- When you configure and replace internal components, do not touch other circuit components inside the module. If available, use a static-safe workstation.
- When not in use, keep the module in its static-shield bag.



**CAUTION:** Electrostatic discharge can degrade performance or damage the module. Handle as stated above.

## Specifications

### Module Location

Any 1771-I/O chassis; any 2-slot I.O group

### Number of Inputs

Up to 12 encoder input bits per module

### Encoder Formats

BCD  
Natural binary  
Standard Gray

### Digital Resolution

Up to one part in 4,095 with natural binary and standard Gray encoders  
Up to one part in 999 with BCD encoders

### High-true Logic

From totem pole, open collector, or differential line drivers  
Can select direction of rotation of increasing position for Gray code encoders

### Input Voltage Range and Logic State

Logic 1: 1.7V DC  
Logic 0: 0.0V to 0.6V DC

### Input Current per Channel (sunk by encoder device)

11 mA for single-ended drivers  
18 mA for differential drivers

### Maximum input Frequency

50 KHz

### Encoder Data Settling Time

100 ns

### Input Power Supply

+5V DC  $\pm 0.25V$  (total output voltage tolerance includes line regulation, load regulation, drift, and ripple)

### Current Requirement

300mA (maximum)

### Number of Outputs

8

### Output Current Rating

2A sourced per output (no derating with all outputs on)

### VA Rating

48W per output  
384W per module

### Surge Rating

4A for 10 ms

### Input and Output Isolation

1500V RMS

### Output Power Supply

Selectable : +5 to +24V DC

### Backplane Current

800 mA at 5V DC

### Output Fuses

3A rectifier fuses (Littelfuse 322003, Buss GBB003, or equivalent)

**New Position Throughput Time**

200 us

**Environmental Conditions**

Operating Temperature

0 to 60° C (32 to 140°F)

Storage Temperature

-40 to 85°C (-40 to 185°F)

Relative Humidity

5 to 95% (without

condensation)

**New Write-data Throughput Time**

4.7 ms

**Keying (for slot 0 only)**

Between 2 and 4

Between 26 and 28

**Torque for wiring arm connections**

9 inch-pounds

**Summary**

This chapter described the absolute encoder module, its functions and applications, and the processors and encoders with which it is compatible. The next chapter tells you how to configure and install the module.

## Configuring and Installing Your Module

### Chapter Objectives

This chapter tells you how to:

- select module features by setting configuration plugs
- power module input circuitry and output devices
- key the module
- make wiring arm connections
- install the module

### Electrostatic Discharge

Electrostatic discharge can damage integrated circuits or semiconductors in this module if you touch backplane connector pins. It can also damage the module when you set configuration plugs or switches inside the module. Avoid electrostatic discharge by observing the following precautions:

- Touch a grounded object to discharge yourself before handling the module.
- Do not touch the backplane connector or connector pins.
- When you configure and replace internal components, do not touch other circuit components inside the module. If available, use a static-safe work station.
- When not in use, keep the module in its static-shield bag.



**CAUTION:** Electrostatic discharge can degrade performance or damage the module. Handle as stated above.

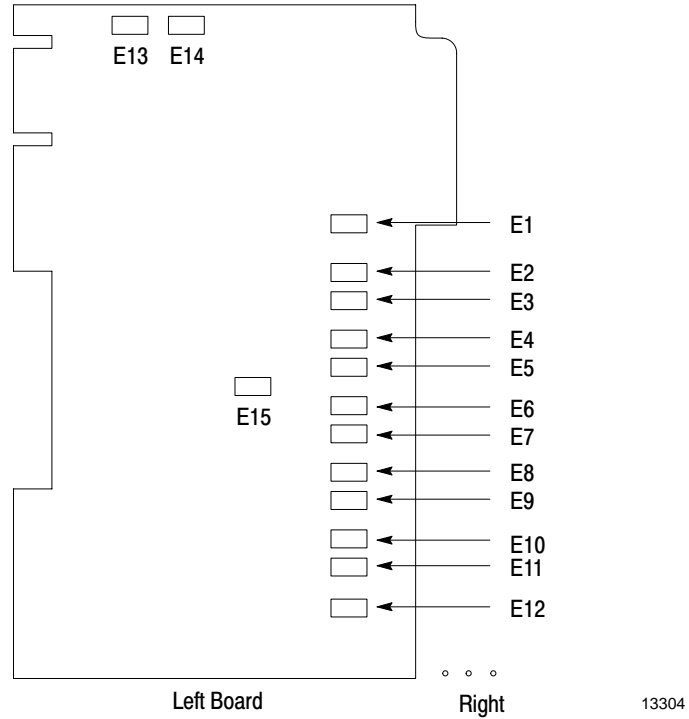
---

### Setting Configuration Plugs

You can choose various module features by setting configuration plugs. The module is factory-set for use with a BCD differential output encoder. To access the configuration plugs, lay the module on its right side and remove the cover.

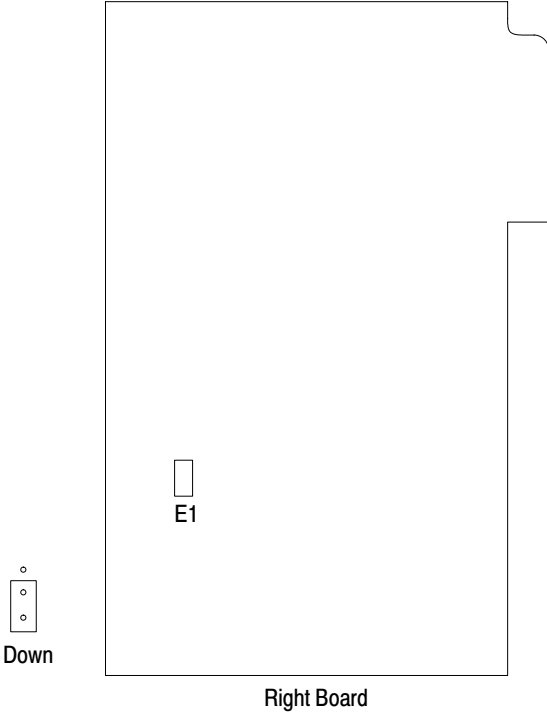
The configuration plug sockets are labeled E1 through E15 on the left printed-circuit board and E1 on the right printed-circuit board. Locate the configuration plugs with the board positioned as shown in Figure 3.1 and Figure 3.2. Each plug is inserted on two pins of a three-pin connector. You change the position of the plugs in a left-right or up-down direction.

**Figure 3.1**  
**Configuration Plug Locations and Settings (Left Board)**



Config- uration Plug	Configuration Plug Settings						
	Encoder Signal Mode		Encoder Format			Gray Encoder Rotational Direction	
	Single-ended	Differ-ential	Natural Binary	Standard Gray	BCD	Increasing Position	Decreasing Position
E1 through E12	left	right					
E13 E14			left left	right left	left left		
E15						right	left

**Figure 3.2**  
Configuration Plug Location and Settings (Right Board)



13305

Configuration Plug	Configuration Plug Settings	
	State of Outputs After Loss of Input Power Supply	
E1	Turn Off	Last State
	Up	Down

**Selecting Encoder Format and Input Signal Mode**

Set configuration plugs E1 through E12 (on the left board) to match the signal mode of each encoder input channel to the encoder. Set configuration plugs E13 and E14 (also on the left board) to match the data format of your encoder.

**Selecting Encoder Rotational Direction**

Use configuration plug E15 on the left board to indicate the direction of shaft rotation that causes the absolute position to increase for Gray code

encoders. This is the same as selecting “high true” or “low true” inputs from the Gray encoder.

Configuration plug E15 is factory-set in the right position. It gives an increased count when the encoder rotates clockwise when looking at the shaft. If your encoder shows a decreased count, change the plug to the left position.

<b>If your Gray encoder has:</b>	<b>and E15 is in this position</b>	<b>the encoder shows:</b>
12 bits	right	an increased count
	left	a decreased count
less than 12 bits	right	an increased count
	left	a decreased count starting with 4,095

This configuration plug does not affect BCD or binary encoders.

### **Selecting State of Outputs Upon Loss of Input Power**

Use configuration plug E1 on the right board to choose the state of the outputs if the module loses input power. The plug is factory-set for the outputs to turn off if input power is lost (up position). If you want the outputs to remain in their state at loss of input power, set the plug to the down position.

### **Response to External Fault**

Except for downloading programs or commands and reporting status, the module operates independent of the host processor. In the event of a processor or I/O communications fault, the module either continues operation or its outputs turn off, depending on how you set the last state switch of the chassis in which you place the module.

If you set the last state switch to turn outputs off, the module’s outputs are turned off.

If you set the last state switch to hold outputs in last state, the module continues operating.

### **Keying**

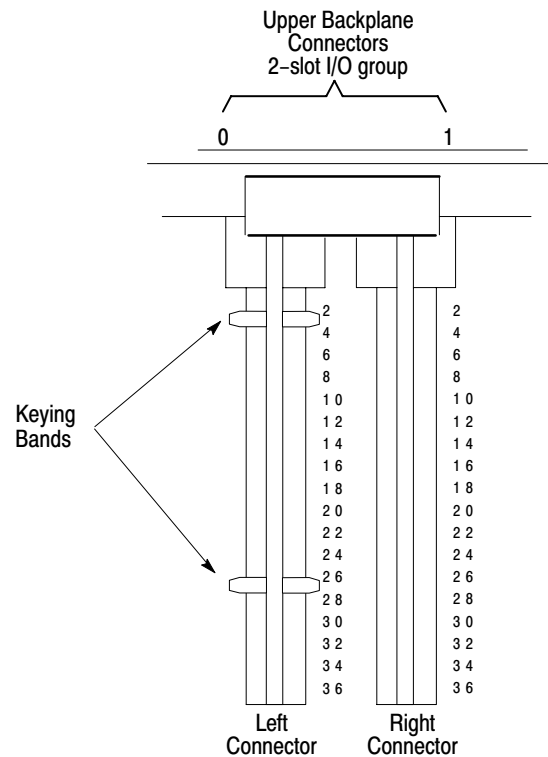
Plastic keying bands are shipped with each I/O chassis. These bands ensure that only a selected type of module can be placed in a particular



I/O chassis module slot. They also help to align the module with the backplane connector.

Each module is slotted at its rear edge. The position of the keying bands must correspond to these slots to allow insertion of the module. Position the keying bands on the upper backplane connector between the numbers at the right of the connectors. Keying bands are only used to key slot 0 of the module. Figure 3.3 illustrates the encoder module keying positions for slot 0.

**Figure 3.3**  
**Keying Positions**



## Power Requirements

You must provide a minimum of two external power supplies: one to power input circuitry and one to power output devices.

### Input Power Supply

Connect a +5V DC power supply for the input circuitry between terminal 21 (+) of the left wiring arm and terminal 21 (-) of the right wiring arm. Make sure the voltage is 5V DC  $\pm$ .25V. The input circuitry requires a

maximum of 300mA.

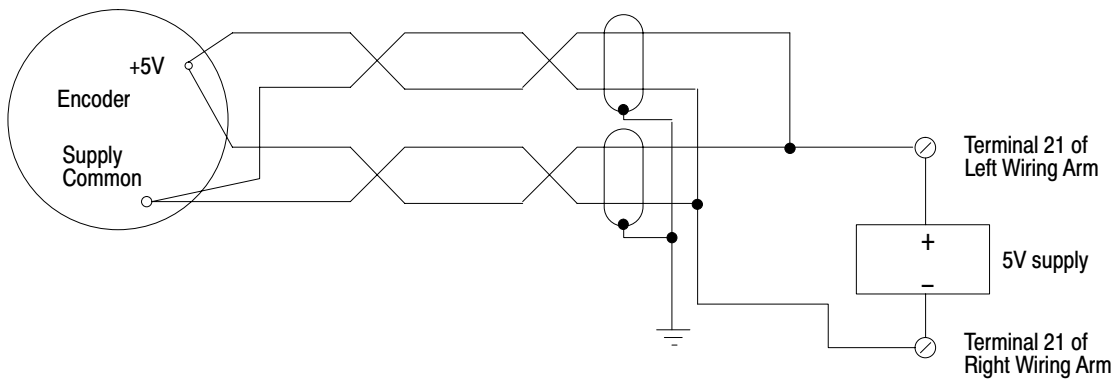
For the best system noise immunity, we recommend use of a separate, linear regulated power supply for powering the input circuitry and the encoder. You can use this supply for more than one absolute encoder module or encoder, but do not use it for other 5V loads such as relays. Make sure the power supply has enough additional current capacity for the encoder.

We suggest you use extra shielded twisted pairs of wire in the encoder input cable to power the encoder. If more than one extra pair of wires remains, put them in parallel to reduce the voltage drop between the power supply and the encoder Figure 3.4.

Do not source current, such as from a power supply, into the encoder input terminals of the module. Doing so can damage input circuitry.

For the best system noise immunity, we recommend use of a separate, linear regulated power supply for powering the input circuitry and the encoder. You can use this supply for more than one absolute encoder module or encoder, but do not use it for other 5V loads such as relays. Make sure the power supply has enough additional current capacity for the encoder.

**Figure 3.4**  
Connecting Extra Pairs of Wires Between the Module and Encoder for Power Supply Connections



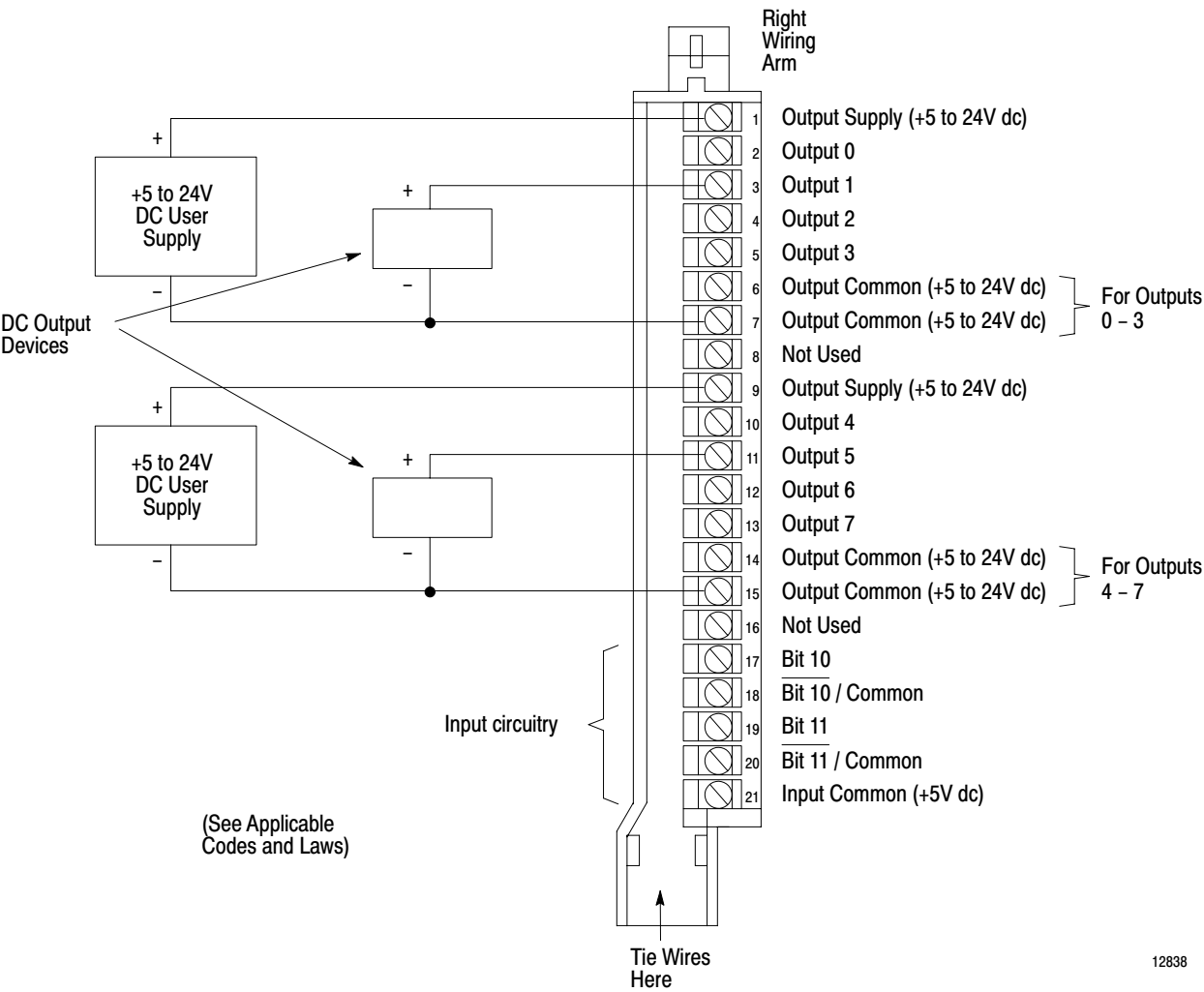
12835

**Output Power Supply**

To power the eight outputs (Figure 3.5), connect at least one +5 to +24V DC supply to terminal 1 and terminal 6 (or 7) of the right wiring arm. You can connect another +5 to +24V DC power supply between terminals 9 and 14 (or 15) of the right wiring arm if, for example, you need two different load supply voltages.

If you need only one supply voltage, connect a wire between terminals 1 and 9 and connect another wire between terminal 6 (or 7) and terminal 14 (or 15).

**Figure 3.5**  
**Connection Diagram for Output Devices**



## Wiring-Arm Connections

We recommend the following Belden cable or its equivalent to connect the encoder to the module (maximum 50 feet). Use extra twisted pairs to connect power to the encoder.

No. of Encoder Bits	No. of Twisted Pairs in Cable	Belden Cable No.	
		18 AWG	20 AWG
8	9	9775	9875
10	11	-	9876
-	12	9776	9877
12	15	9777	9879

**Important:** Tighten wiring arm connections to 9 inch-pounds of torque.



**WARNING:** Do not remove the wiring-arm from an operating module; it will cause the power-up bit status to change unpredictably until a valid write to the module occurs.

If swing-arm power is lost, turn on the power-up bit and disable all outputs until a valid write occurs.

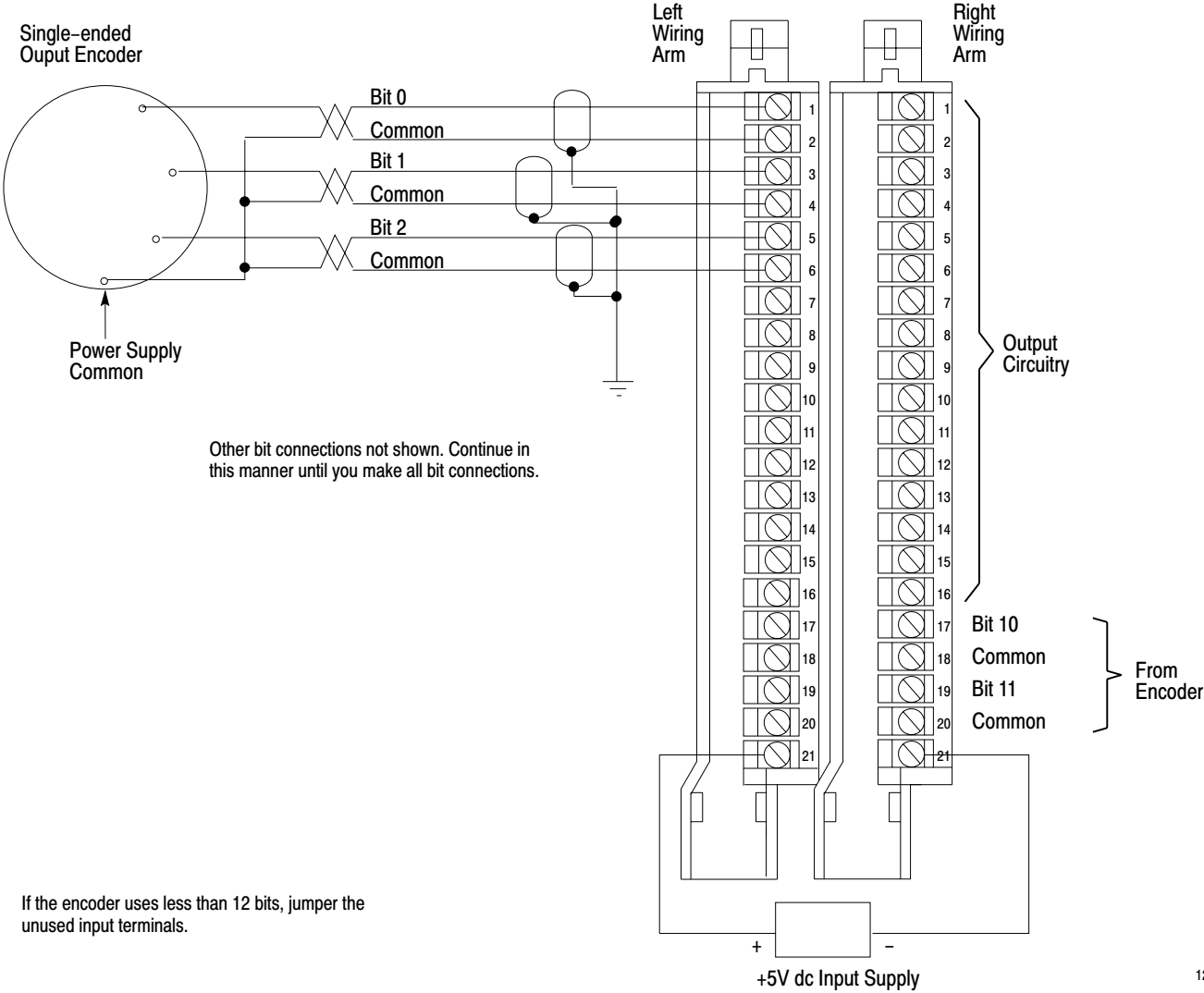
---

### Connecting a Single-ended Output Encoder

Use Figure 3.6 to connect a single-ended output encoder. Connect the signal line for bit 0 to terminal 1 of the left wiring arm. Connect its return to terminal 2. Connect bit 1 signal line to terminal 3 and its return to terminal 4. Continue in this way for all encoder channels.

If the encoder has less than 12 signal bits, jumper the unused input terminals. For example, if you are using a 10-bit encoder, jumper terminals 19 and 20 and terminals 17 and 18 on the right wiring arm.

**Figure 3.6**  
**Single-ended Output Encoder Connection Diagram**



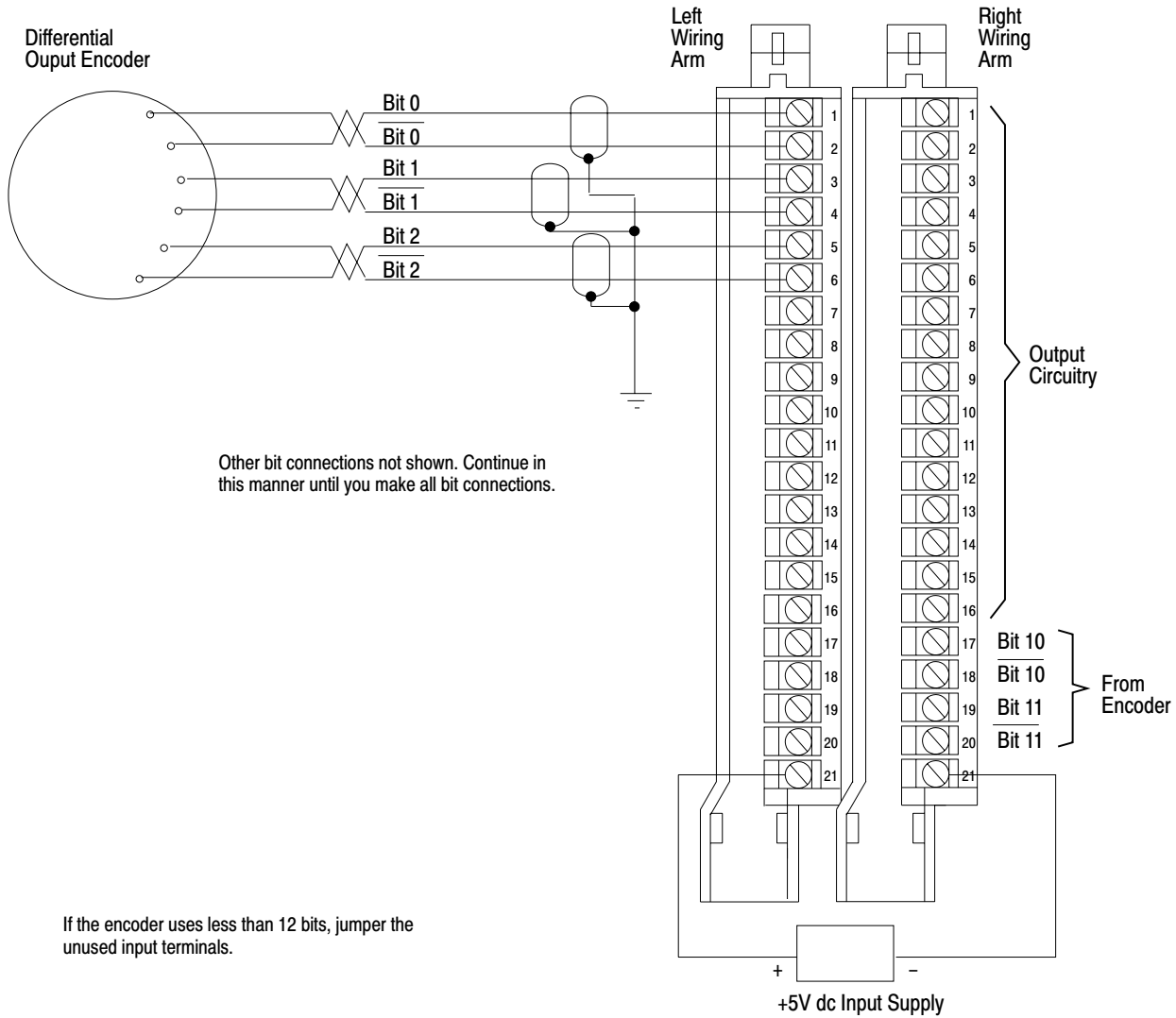
12836

**Connecting a Differential Output Encoder**

Figure 3.7 is the connection diagram for a differential output encoder. Connect the bit 0 signal line to terminal 1 and the bit 0 line to terminal 2. Connect bit 1 to terminal 3 and the bit 1 line to terminal 4. Continue in this way for all encoder channels.

If the encoder has less than 12 signal bits, jumper the unused input terminals. For example, if you are using a 10-bit encoder, jumper terminals 19 and 20 and terminals 17 and 18 on the right wiring arm.

**Figure 3.7**  
**Differential Output Encoder Connection Diagram**



12837

### Connecting Output Devices

Use Figure 3.5 to connect your output devices and supply(ies). Two output commons are associated with each output group:

- terminals 6 and 7 for outputs 0 through 3
- terminals 14 and 15 for outputs 4 through 7

Terminals 6 and 7 are tied together internally, as are 14 and 15, so that each output group can use either terminal for that particular group.

## Installing the Module

Now that you've determined the power requirements, keying, and wiring for your module, you can use the following procedure to install it.

Refer to the Programmable Controller Grounding and Wiring Guidelines (pub. no. 1770-4.1) for proper grounding and wiring methods to install your module.



**WARNING:** Remove power from the 1771 I/O chassis backplane and wiring arm before installing or removing the module.

- 
- Failure to remove power from the backplane or wiring arm could cause module damage, degradation of performance, or injury.
  - Failure to remove power from the backplane could cause injury and/or equipment damage due to possible unexpected operation.



**WARNING:** Install the module in the I/O chassis so that both halves of the module are in the same I/O group. Failure to observe this rule will result in faulty module operation and/or damage to the module circuitry with possible injury to personnel.



**CAUTION:** Do not force the module into a backplane connector. If you can't seat it with firm pressure, check the alignment and keying. You can damage the connector or the module if you force it into the connector.

- 
1. Remove power from the I/O chassis before inserting (or removing) the module.
  2. Open the module locking latch on the I/O chassis and insert the module into the slot keyed for it.
  3. Firmly press to seat the module into its backplane connector.
  4. Secure the module with the module locking latch.

## Chapter 3

### Configuring and Installing Your Module

#### Summary

This chapter told you how to select features and set configuration plugs on the absolute encoder module, and described the power requirements, keying, wiring, and installation of the module. In the next chapter you will read about block-transfer file parameters.



## Module/Processor Communication

### Chapter Objectives

This chapter describes file parameters for the block-transfer data files you use to write data to and read data from the absolute encoder module.

### Block Transfer

The absolute encoder module and the processor communicate through block-transfer programming. Processors that use block-transfer programming are listed below, along with the respective programming manual. Refer to the latest edition of the programming manual for a detailed description of block transfer.

Processor	Programming and Operations Manual Publication Number
Mini-PLC-2	1772-6.8.4
Mini-PLC-2/15	1772-6.8.2
Mini-PLC-2/05	1772-6.8.6
PLC-2/20	1772-6.8.1
PLC-2/30	1772-6.8.3
PLC-3	1772-6.4.1

### Block-transfer-write Data

You write data to the module in blocks. You can write 5, 10, 15 or 20 words in one block-transfer operation. Each block of five words is associated with two outputs and is identical to each other in format:

words 1-5 - outputs 0 and 1  
 words 6-10 - outputs 2 and 3  
 words 11-15 - outputs 4 and 5  
 words 16-20 - outputs 6 and 7

The first word of each block is a control word. The last four words are preset words. The formats of the write-data words and control word 1 are shown in Figure 4.1 and are described here.

You can send a maximum of 20 words (four block of five words) in one block-transfer operation. The number of words you send to the module determines how many outputs it controls. If you want to change data for

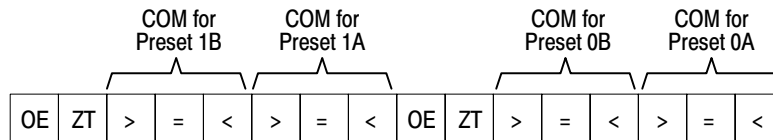
outputs 4 and 5 (and the module is controlling all eight outputs), you must send 20 words to the module; you cannot send only the words associated with outputs 4 and 5.

**Figure 4.1**  
**Format of Block-transfer-write Data**

Word #1	17	16	15	14	13	12	11	10	07	06	05	04	03	02	01	00	
	OE	ZT	>	=	<	>	=	<	OE	ZT	>	=	<	>	=	<	Control word for Outputs 0 and 1
2																	Preset 0A
3																	Preset 0B
4																	Preset 1A
5																	Preset 1B
6	OE	ZT	>	=	<	>	=	<	OE	ZT	>	=	<	>	=	<	Control word for Outputs 2 and 3
7																	Preset 2A
8																	Preset 2B
9																	Preset 3A
10																	Preset 3B
11	OE	ZT	>	=	<	>	=	<	OE	ZT	>	=	<	>	=	<	Control word for Outputs 4 and 5
12																	Preset 4A
13																	Preset 4B
14																	Preset 5A
15																	Preset 5B
16	OE	ZT	>	=	<	>	=	<	OE	ZT	>	=	<	>	=	<	Control word for Outputs 6 and 7
17																	Preset 6A
18																	Preset 6B
19																	Preset 7A
20																	Preset 7B

**A. Write-data Words**

**B. Format of Control Word #1**



OE = Output Enable Bit  
 ZT = Zero Transition Bit  
 COM = Comparison Bits

### **Control Words**

Each control word is associated with two outputs. The lower byte of control word 1 is associated with output 0. Its format is as follows:

Bits 0 through 2 are the comparison bits for output 0, preset A (greater than, less than, equal to, greater than or equal to, less than or equal to).

Bits 3 through 5 are the comparison bits for output 0, preset B.

Bit 6 is the zero transition (ZT) bit. Set this bit when an output is to be energized during a transition through 0.

Bit 7 is the output enable (OE) bit. This bit is examined along with the comparison made by the module between your presets and the absolute position of the encoder in turning on a module's output. Although comparisons to the presets may be true, if you don't set this bit the output is not turned on.

The upper byte of control word 1 is associated with output 1. The format of this byte is similar to the format of the lower byte:

Bits 10 through 12 are the comparison bits for output 1, preset A.

Bits 13 through 15 are the comparison bits for output 1, preset B.

Bit 16 is the ZT bit.

Bit 17 is the OE bit.

The remaining control words with their corresponding outputs are:

word 6 - outputs 2 and 3

word 11 - outputs 4 and 5

word 16 - outputs 6 and 7

### **Preset Words**

The present words define preset values for turn-on and turn-off points of the corresponding output. You program them in BCD. Each block of four preset words is associated with two outputs and is identical in format to that for outputs 0 and 1:

word 2 - preset A for output 0

word 3 - preset B for output 0

word 4 - preset A for output 1

word 5 - preset B for output 1

**Write-Data Throughput Time**

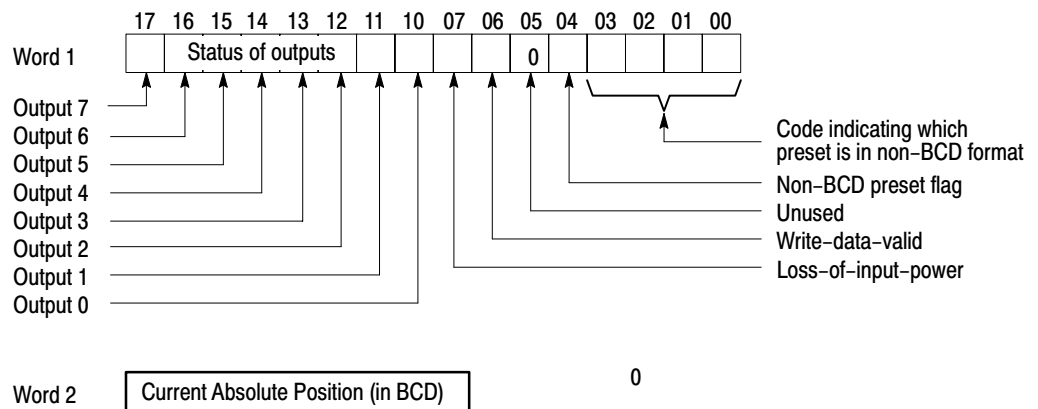
The write-data throughput time is the time between the end of a block-transfer-write operation and the module update of its outputs. The module's response time can vary, depending on the number of outputs it controls, the type of absolute encoder you use, and if you have an offset value. The worst case is 4.7 ms. Use the following table to determine the module's response time in milliseconds for your application.

Type of Encoder (with or without offset)				
BCD without offset	2	4	6	8
BCD with offset	1.2	1.8	2.5	3.1
Gray code or binary without offset	2.0	2.9	3.8	4.7
Gray code or binary with offset	1.3	2.0	2.6	3.3
	1.9	2.6	3.4	4.1

**Block-transfer-read Data**

The processor reads data from the module and transfers it to its data table in two read-data words. The module sends only two read-data words in any one block-transfer-read operation. The format of these words is shown in Figure 4.2 and is described here:

**Figure 4.2**  
**Format of Block-transfer-read Data**



13070

The upper byte of word 1 indicates the status of the eight outputs controlled by the module. The module sets each bit when the corresponding output is turned on. Refer to Appendix D for details of these bits. The format of the lower byte of word 1 (by bit) is:

Bit 7 is the loss-of-input-power bit. It is set when input power is lost; it is reset when power is restored **and** bit 6 is reset.

Bit 6 is the write-data-valid bit. It is set at power-up and when the processor changes from the program mode to the run mode; it is reset when the module receives valid data in a block-transfer-write operation.

Bit 5 is unused.

Bit 4 is the non-BCD preset flag. It is set when any preset is in non-BCD format.

Bits 3 through 0 are a binary or hexadecimal code that indicates which preset is not in BCD format. (Refer to Appendix D for the value of these bits.) The module identifies each incorrect preset in the order it finds them (one at a time). Once you correct a preset, the module continues to identify any non-BCD preset.

Word 2 indicates the current absolute position of the encoder in BCD.

### **Programming Example**

Presets are interpreted by the module as absolute numbers to be compared to the absolute position of the encoder shaft; they are not interpreted as degrees of shaft rotation.

Thus, if you have a 0 to 999-position encoder, you program presets for output 3, for example, as:

Preset 3A = 200

Preset 3B = 402

There is no restriction on which mode of comparison you can use for preset A or preset B.

In this example, we assume the use of a 0 to 359-position encoder when referring to degrees of shaft rotation.

If you want to turn on output 0 between shaft positions 330 (preset A) and 005 (preset B), you set:

the “greater than” and “equal to” bits for preset A  
the “less than” and “equal to” bits for preset B  
the ZT bit

the OE bit

Output 0 is turned on when the shaft position is greater than or equal to 330 or when the shaft position is less than or equal to 005.

If you don't set the ZT bit in the above control word, when the encoder shaft position is 002, for example, comparison B is true, comparison A is not true, and the output is turned off. (At position 002, the shaft position is less than or equal to 005, but it is not greater than or equal to 330.) You must set the ZT bit when an output is to be energized during a transition through 0.

Another way to energize output 0 between position 330 and 005 is to give preset A a value of 006 and preset B a value of 329. Then you set:

- the "less than" bit for preset A
- the "greater than" bit for preset B
- the ZT bit
- OE bit

In either case, you must set bit 6 (ZT) to indicate that the output should be on if either comparison A or comparison B is true.

Let's continue this example and assume your application requirements for outputs 0 and 1 are:

- output 0 is to turn on at position 330 and turn off at position 005
- output 1 is to turn on between position 007 and position 011

Once you define the presets for outputs 0 and 1, determine the comparison bits for each preset, and enter the data into the data file, the block of data you write to the module (five words) looks like this:

		17	16	15	14	13	12	11	10	07	06	05	04	03	02	01	00	Bit #
		OE	ZT	>	=	<	>	=	<	OE	ZT	>	=	<	>	=	<	Control Word Function
binary		1	0	0	0	1	1	0	0	1	1	0	1	1	1	1	0	Control Word
		0				3				3				0				Preset 0A
BCD		0				0				0				5				Preset 0B
digits		0				0				0				7				Preset 1A
		0				0				1				1				Preset 1B

## **Programming Considerations**

When you specify the default block length (00), the following considerations apply for PLC-2 family processors:

You can and should enable the read and write instructions in the same scan (separate but equal input conditions).

The module decides which operation is performed first when both instructions are enabled in the same scan.

Alternate operation is performed in a subsequent scan.

Do not operate on transferred data until the done bit is set.

When you examine the read and write files, 64 words appear to be moved; however, the processor writes only 20 words and reads only two words in any block-transfer operation.



**WARNING:** When the block lengths of bidirectional block-transfer instructions are set to unequal values, do not enable the rung containing the alternate instruction until the done bit of the first transfer is set. If you enable them in the same scan, the number of words transferred may not be the number intended, invalid data could be operated upon in subsequent scans, or output devices could be controlled by invalid data. Unexpected and/or hazardous machine operation could occur. Damage to equipment and/or personal injury could result.

---

## **Summary**

This chapter gave a description of the file parameters for programming block-transfer-read and -write operations for the absolute encoder module. It also gave several programming examples and considerations for use with the absolute encoder module. The next chapter describes troubleshooting the module.

## Offset Feature

### Offset Feature

Offset is a new feature of the Absolute Encoder Module (cat. no. 1771-DE, revision B). Revision A modules do not have this feature.

Offset is the difference between the 0 position of the absolute encoder and the 0 position of the machine shaft to which the encoder is connected. You can program this value to compensate for such factors as machine wear or improper mechanical setup. You do not have to disconnect your equipment to realign the 0 position of the machine shaft with the 0 position of the absolute encoder.

### Determining the Offset Value

You can find the offset value using either of two equations, depending on whether you use the 0 machine position or the 0 encoder position as your reference.

To calculate an offset value from a 0 encoder position, use this equation:

$$N - M = S$$

where N = number of encoder positions, M = machine position at encoder 0, and S = offset.

To calculate an offset value from a 0 machine position, use this equation:

$$E - N = S$$

where E = encoder position at machine 0, N = number of encoder positions, and S = offset.

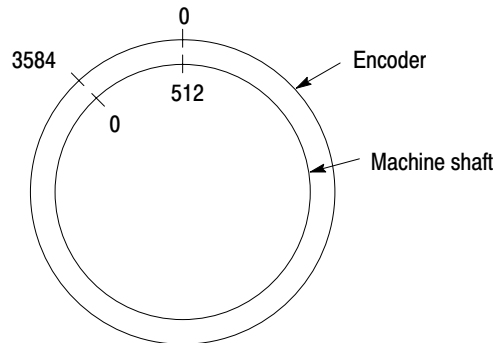
Let's look at an example finding the offset value with reference to 0 encoder position and 0 machine position. Assume the following:

- You have a 0 to 4,095-position encoder (4,096 positions)
- The machine shaft is at position 512 when the encoder is at position 0
- The encoder is at position 3,584 when the machine is at position 0



In this example, the 0 machine position is “ahead” of the 0 encoder position. Depending on which equation you use (your reference point), the offset value is either positive or negative.

### **Offset Value From 0 Encoder Position and From 0 Machine Position**



At encoder position 0, machine shaft position is 512.  
The offset is +3,584.

At machine shaft position 0, encoder position is 3,584.  
The offset is -512.

13522

The equation (from 0 encoder position) is:

$$4,096 - 512 = 3,584$$

The offset is +3,584.

The equation (from 0 machine position) is:

$$3,584 - 4,096 = -512$$

The offset is -512.

You get the same result from programming either +3,584 or -512.

### **Offset Words**

Once you determine the offset value, you need to program two write-block-transfer words. These are the last two words of the write-data block that you send to the absolute encoder module. You program them in BCD, as you do the preset values.

**Format of Offset Words**

17	16	15	14	13	12	11	10	7	6	5	4	3	2	1	0	Bit #
S	OFFSET VALUE															
NO. OF ENCODER POSITIONS																

The offset words are the last two words of the write-data block that you send to the absolute encoder module.

If you are controlling

- 2 outputs
- 4 outputs
- 6 outputs
- 8 outputs

The offset words are:

- words 6 and 7
- words 11 and 12
- words 16 and 17
- words 21 and 22

S = sign bit. Set this bit if the offset has a negative value; reset the bit if the offset has a positive value.

13523

The first offset word contains the value of the offset. Bit 17 of this word is the sign bit. It indicates whether the offset is negative or positive. Set bit 17 if the offset is negative; reset it if the offset is positive.

The second offset word is the number of positions of the encoder. If you are using a 0 to 4,095-position encoder, your second offset word is 4,096.

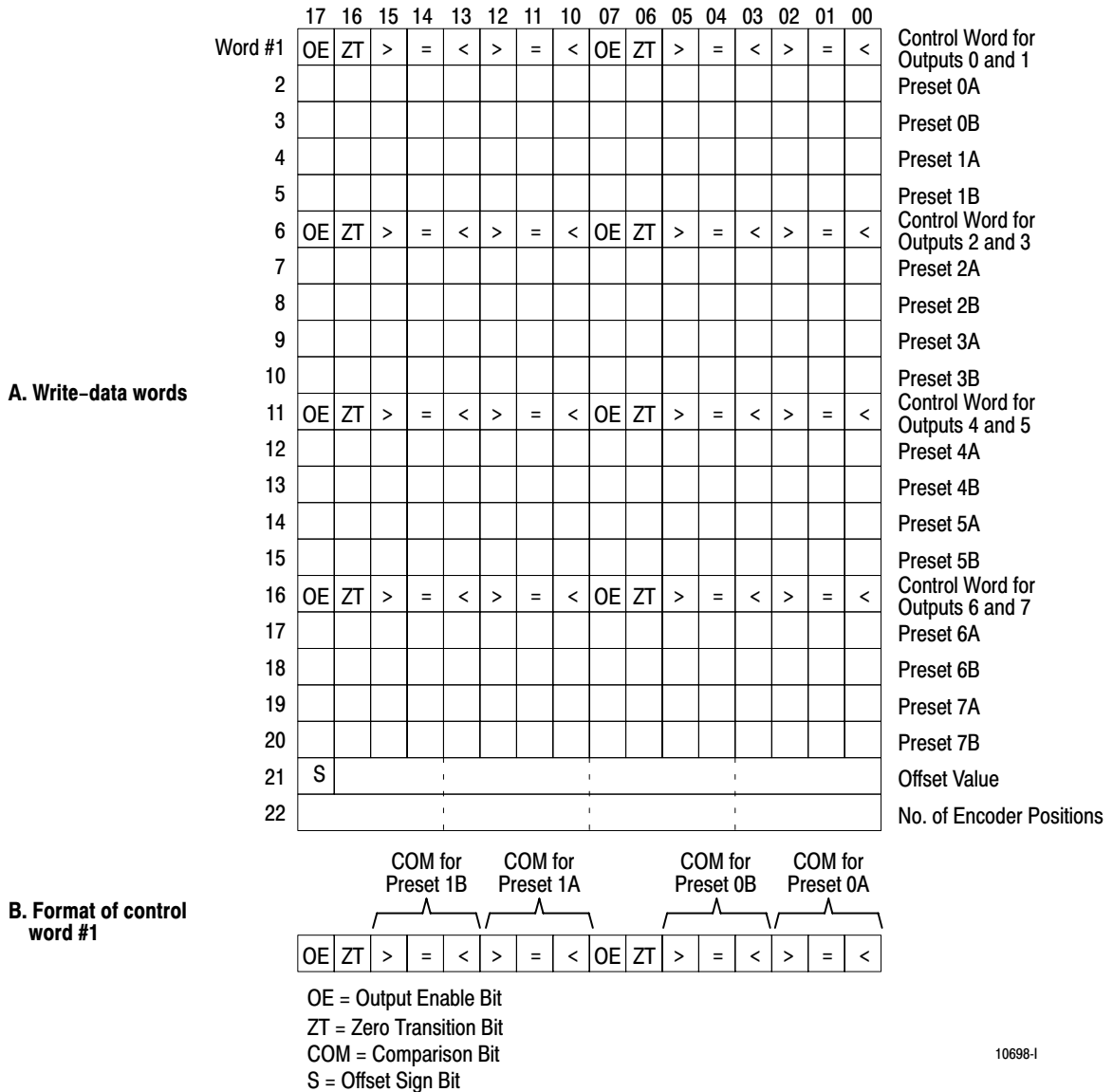
**Block-transfer-write Data with Offset**

The number of words you send to the module depends on the number of outputs the module controls. The offset feature adds two words to the total number of words you send to the module:

If the module controls:	You send:
2 outputs	7 words
4 outputs	12 words
6 outputs	17 words
8 outputs	22 words

If the module is controlling eight outputs, your block-transfer-write data now looks like this:

**Figure 5.1**  
**Format of Block-transfer-write Data with Offset**



**Block-transfer-read Data with Offset**

The upper byte of word 1 indicates the status of the eight outputs controlled by the module. The module sets each bit when the corresponding output is turned on.

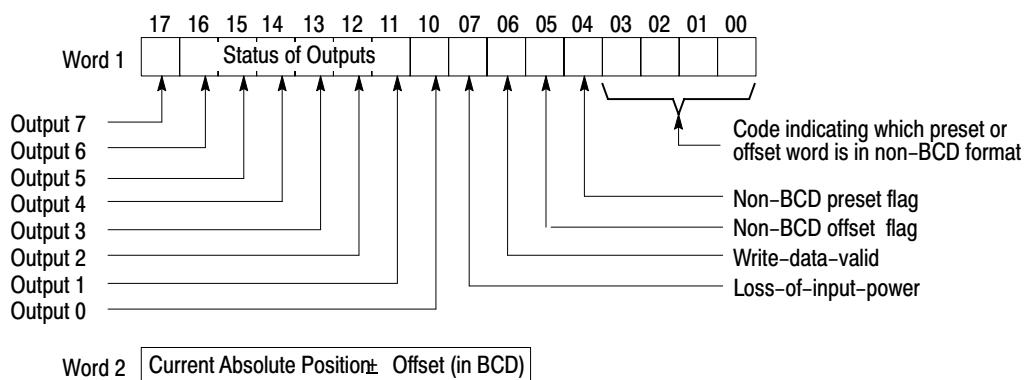
The lower byte of word 1 (by bit) is:

- Bit 7 is the loss-of-input-power bit. It is set when input power is lost; it is reset when power is restored **and** bit 6 is reset.
- Bit 6 is the write-data-valid bit. It is set at power-up and when the processor changes from program mode to run mode; it is reset when the module receives valid data in a block-transfer-write operation.
- Bit 5 is the non-BCD offset flag. See the description of bit 0 and bit 1 below to identify the type of offset error.
- Bit 4 is the non-BCD preset flag. It is set when a preset word is in non-BCD format.
- Bits 3 through 0 are a binary or hexadecimal code that indicates which preset word is not in BCD format. Refer to Appendix D of the User's Manual for the value of these bits.
- Bit 1 when set along with bit 5 identifies that the offset value is greater than the number of encoder positions.
- Bit 0 identifies which offset word is in non-BCD format when bit 5 is also set.
  - If bit 0 is set, the word containing the number of encoder positions is in error.
  - If bit 0 is reset, the word containing the offset value is in error.

The module identifies each non-BCD word in the order it finds them (one at a time). Once you correct the format of one word, the module continues to identify other non-BCD words.

Word 2 indicates the current position of the encoder, with the offset value, in BCD.

**Figure 5.2**  
Format of Block-transfer-read Data With Offset



10216-I

**Programming Considerations  
with Offset**

The default block lengths (00) for block-transfer instructions are 20 block-transfer-write words and two block-transfer-read words. These are the block lengths that transfer to and from the absolute encoder regardless of whether you use the offset feature.

When you have an offset value and the module is controlling eight outputs, for example, the number of words you send to the module is 22. You must enter the numbers 22 and 2 for the block lengths of write and read data. Do not enter the default block length in your instructions if you use the module's offset feature.

For PLC-2 family processors, do not enable the read- and write-block-transfers in the same scan when you use the offset feature. An example program enabling the instructions in separate scans follows.



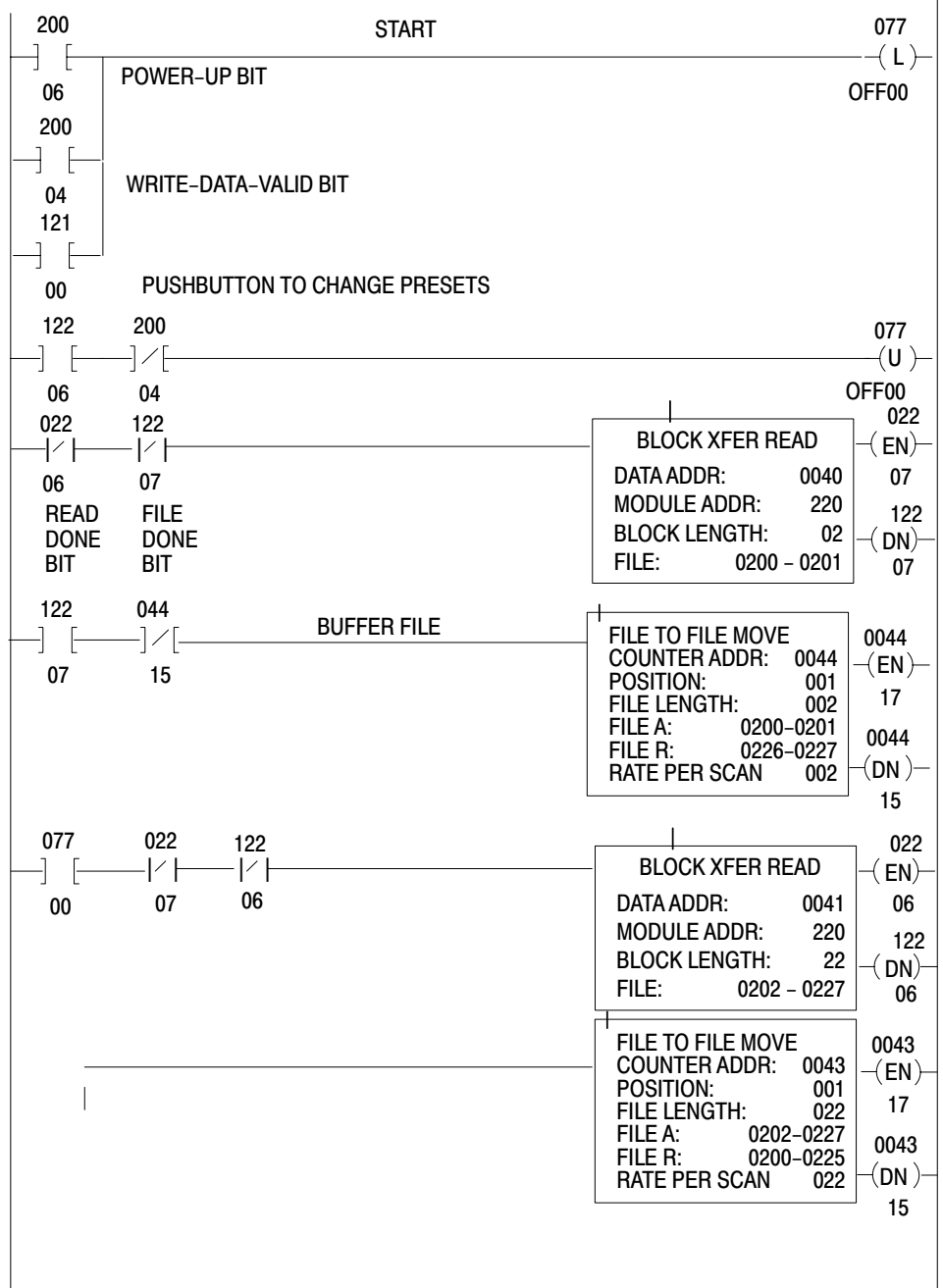
**WARNING:** When the block lengths of bidirectional block-transfer instructions are set to unequal values, do not enable the rung containing the alternate instruction until the done bit of the first transfer is set. If you enable them in the same scan:

- the number of words transferred may not be the number intended
- invalid data could be operated upon in subsequent scans
- output devices could be controlled by invalid data

Unexpected and or hazardous machine operation could occur. Damage to equipment and/or injury could result.

---

LADDER DIAGRAM DUMP



Rung 1	200/06 and 200/04 are returned in the read operation and latch 077/00. When 077/00 is latched, the module toggles between a read operation and a write operation.  121/00 is optional and lets the processor initiate a block-transfer-write operation.
Rung 2	This rung examines the write-done-bit (122/06) and the valid BCD data bit (200/04) to unlatch 077/00 and begin the read-only operation.
Rung 3	This rung contains the block-transfer-read instruction, conditioned by the read done bit and the write enable bit.
Rung 4	Use a file-to-file move to buffer the read data. Use addresses 0226 and 0227 when making any data comparisons.
Rung 5	This rung contains the block-transfer-write instruction, conditioned by the write done bit and the read enable bit.
Rung 6	This rung is for display purposes only.

## Troubleshooting

### Chapter Objectives

In this chapter you will read how to troubleshoot your absolute encoder module using the ACTIVE (GREEN) and FAULT (red) indicators, block-transfer rungs in your ladder program, and diagnostic bits in word 2 of the read-data file.

The following table lists problems indicated by LED changes, possible causes, and recommended actions.

- LED = ON
- LED = OFF

Indication	Description	Recommended Action
ACTIVE FAULT	Normal operation; module should operate when the PC goes into the RUN mode and you send presets.	None
ACTIVE FAULT	Module is held reset at power-up; probable malfunction in adapter module or processor module.	Substitute adapter module, power supply, or processor module.
ACTIVE FAULT	Module has detected a hardware fault in its power-up diagnostic routine.	Return module for repair.
ACTIVE FAULT	Module is not receiving DC power from the chassis backplane.	Check chassis power supply (ies).

### Causes of Block-transfer Errors

Observe the block-transfer rungs in your ladder diagram program. You have a block-transfer error when you observe one or both of the following:

@  
@  
@  
@

- The block-transfer error bits are intensified (PLC-3 processors).
- The enable and done bits of block-transfer instructions do not intensify or they remain intensified; they should alternately turn on (intensify) and turn off.

Block-transfer errors are caused if one or more of the following are incorrect:

- The module's location (rack, group, slot) in the I/O chassis must match the rack, group, and slot of block-transfer instructions in the ladder program.



- The block lengths of read- and write-block-transfer instructions should be equal (PLC-2 family processors); or if they are different lengths, do not enable the read and write instruction in the same scan.
- Your conditioning instructions in block-transfer rungs allow the rungs to turn off and on.
- If you're using a PLC-2/30 processor, set the scanner for block-transfer operation.
- If you're using a PLC-3 processor, create block-transfer data files.

**Errors Indicated by Diagnostic Bits**

Examine the diagnostic bits by displaying the read block of the block-transfer-read instruction. Refer to the programming manual of your processor for the procedure.

The lower byte of the first read-data word contains the diagnostic bits.

<b>If this bit is set:</b>	<b>Then:</b>
07	The module is not receiving +5V from the input power supply; check the supply and the connections between the supply and the module.
06	The module has not received any block-transfer-write data; check your block-transfer instructions.
04	The module has examined all 16 presets (it has received write data) and has found a preset that is not in BCD; check bits 03 through 00 for the error code to determine which word contains the incorrect preset. See Appendix D for the error codes.

**Summary**

If you have followed the wiring and installation guidelines in chapter 3 and the block-transfer guidelines in chapter 4, you have minimized the need to troubleshoot your encoder module. If you need to troubleshoot, however, the information in this chapter can help you diagnose and correct problems.

## Block-transfer Timing

### Block-transfer Timing for PLC-2 Family Processors

The time required for a block-transfer-read or -write operation for PLC-2 family processors depends on:

- the system scan time(s)
- the number of words to be transferred
- the I/O configuration
- the number of enabled block-transfer instructions in the ladder diagram program during any program scan

A block-transfer module performs only one block-transfer operation per I/O scan regardless of whether both read and write operations are requested. When done, the module toggles from one operation to the other in each program scan.

For a worst case calculation of the time between block transfers, assume that the number of enabled block-transfer instructions during any program scan is equal to the number of block-transfer modules in the system. Also assume that the encoder module is transferring 20 words in a write operation and two words in the alternate read operation.

The method of calculating the worst case time between block transfers is covered for the following case: PLC-2/30 remote and local systems, a PLC-3 system, and a Mini-PLC-2/15 controller.

### PLC-2/30 (PLC-2/20) Remote System

The system scan time for a remote PLC-2/30 or PLC-2/20 system is the sum of the processor scan time, the processor I/O scan time (between processor and remote distribution panel), and the remote distribution panel I/O scan time. The remote distribution panel can process only one block-transfer operation per remote distribution panel scan.

You can calculate the worst case time between transfers under normal operating conditions in three steps.

1. Calculate the system values that are determined by the system configuration.

- Program Scan (PS) = (5 ms/1K words) x (number of program words)
  - Processor I/O Scan (PIO) = (0.5 ms/rack number) x (declared rack numbers)
  - Remote Distribution I/O Scan (RIO) = (7 ms/chassis) x (number of chassis)
  - Number of Words Transferred (W) = 20 words for one write operation, two words for one read operation
2. Calculate the block-transfer time for a write operation (TW) and for a read operation (TR).
- $TW = (PS + PIO + 2 RIO + 0.5W + 13) \text{ ms}$
  - $TR = (PS + PIO + 2 RIO + 0.5W + 4) \text{ ms}$

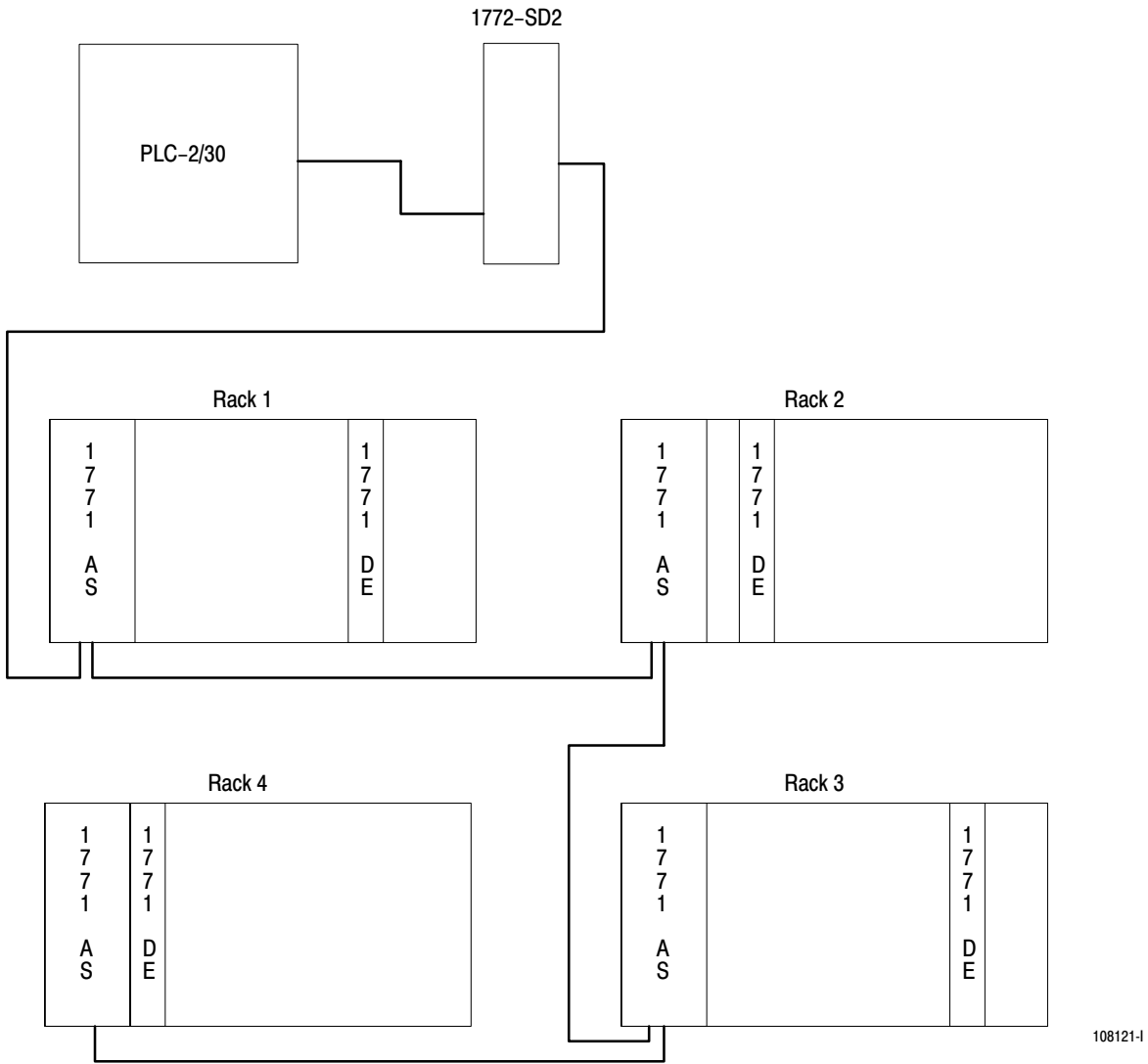
These equations are valid for up to 10,000 cable feet between the remote distribution panel and remote I/O chassis for a baud rate of 57.6kBd or 5,000 cable feet at 115kBd.

3. Calculate the worst case system time (ST) between transfers.
- ST = Sum of transfer times of all block-transfer modules in a system taken worst case (read or write)

#### **Example 1**

- A PLC-2/30 programmable controller is controlling 4 I/O chassis in a remote configuration with 1 assigned rack number per chassis (Figure A.1). An encoder module is located in each chassis. Assume the 2 words are transferred in each read operation, 20 words are transferred in each write operation, and that the ladder diagram program contains 4K words. There are no other block-transfer modules in the system.

Figure A.1  
PLC-2/30 Remote System Example



We want to find the worst case time between two consecutive block-transfer-read operations from the same module in this system.

Solution:

- Program length = 4K words (K = 1,024)
- Number of chassis = 4 (1 assigned rack number/chassis)

- Number of block-transfer words = 2 words (read) or 20 words (write)
1. Calculate the system values.
    - Processor Scan Time (PS) = (5ms/1K words) x (4K words) = 20ms
    - Processor I/O Scan Time (PIO)=(0.5 ms/rack number) x (4 rack numbers) = 2 ms
    - Remote Distribution I/O Scan Time (RIO) = (7 mx/chassis) x (4 chassis) = 28 ms
    - Number of Words Transferred = 2 (read) or 20 (write)
  2. Calculate the block-transfer times for a write operation and for a read operation.
    - TW = (PS + PIO + 2(RIO) + 0.5W + 13) ms  
 =(20 + 2 + 2(28) + 0.5(20) + 13) ms  
 =101 ms (write)
    - TR = (PS + PIO + 2(RIO) + 0.5W + 4) ms  
 =(20 + 2 + 2(28) + 0.5(2) + 4) ms  
 = 83 ms (read)
  3. Calculate the worst case system time (ST) between 2 consecutive block-transfer-read operations.
    - ST = 4TW + 4TR  
 =4(101) + 4(83)  
 = 736 ms

This is the worst case time between two consecutive block-transfer-read operations in the 4-chassis remote configuration described in example 1 (one enabled encoder module in each chassis).

### PLC-2/30 Local System

The system scan time for a local PLC-2/30 system is the program scan time plus the processor I/O scan time. Each block-transfer module is updated during a program scan.

The calculation of the worst case time between transfers can be done in three steps.

1. Calculate the system values that are determined by the system configuration.
  - Program Scan (PS) = (5 ms/1K words) x (number of program words)
  - Processor I/O Scan (PIO) = (1 ms/rack number) x (number of declared rack numbers)
  - Number of words transferred (W) = 2 (read) or 20 (write)
2. Calculate the block-transfer time (T) for the read or write operation.
  - $T = 0.08 \text{ ms/word} \times \text{number of words transferred}$
3. Calculate the worst case system time (ST) between transfers.
  - $$ST = PS + PIO + T(1)(\text{read}) + T(2)(\text{read}) + T(3)(\text{read}) + \dots$$

$$PS + PIO + T(1)(\text{write}) + T(2)(\text{write}) + T(3)(\text{write}) + \dots$$

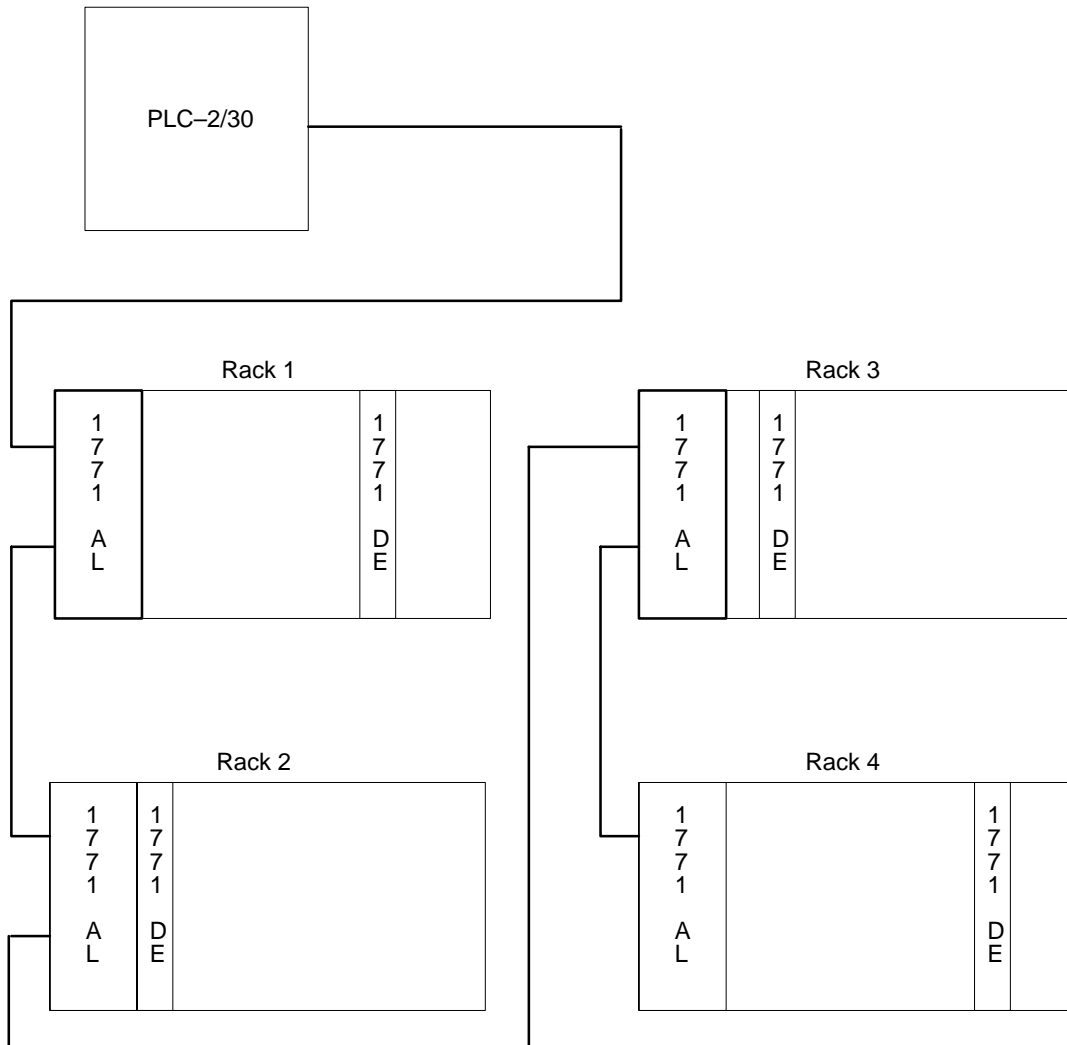
$$= 2(PS + PIO) + T(1)(\text{read}) + T(2)(\text{read}) + T(3)(\text{read}) + \dots$$

$$T(1)(\text{write}) + T(2)(\text{write}) + T(3)(\text{write}) + \dots$$

### Example 2

A PLC-2/30 programmable controller is controlling four I/O racks in a local configuration. Assume one block-transfer module per chassis and one assigned rack number per chassis (Figure A.2).

Figure A.2  
PLC-2/30 Local System Example



10813-I

Solution:

- Program length = 4K words
- Number of chassis = 4 (1 assigned rack number per chassis)
- Number of block-transfer words,  $W = 2$  (read) or 20 (write)

1. Calculate the system values.

- Processor Scan Time (PS) =  $(5 \text{ ms}/1\text{K words}) \times (4\text{K words}) = 20 \text{ ms}$

- Processor I/O Scan Time (PIO) = (0.5 ms/rack number) x (4 rack numbers) = 2 ms
  - Number of Words Transferred (W) = 2 (read) or 20 (write)
2. Calculate the block-transfer times (T) for the read and write operation.
    - T = 0.08 ms/word x 2 words  
= .16 ms (read)
    - T = 0.08 ms/word x 20 words  
= 1.6 ms (write)
  3. Calculate the worst case system time (ST) between 2 consecutive block-transfer-read operations.

The module toggles to a read operation in the scan following completion of the write operation and vice versa.

- ST = PS + PIO + T(1) + T(2) + T(3) + T(4)(writes)  
PS + PIO + T(1) + T(2) + T(3) + T(4)(reads)
- ST = 2PS + 2PIO + 4T(read) + 4T(write)  
= 2(20) + 2(2) + 4(.16) + 4(1.6)  
= 40 + 4 + .64 + 6.4  
= 51.04 ms

This is the worst case time between two consecutive block-transfer-read operations in the 4-chassis local configuration described in example 2 (one enabled encoder module in each chassis).

### Mini-PLC-2/15 Controller

The Mini-PLC-2/15 scan is 15 ms for 1K program. Its I/O scan time is 5 ms. Each block-transfer module is updated during a program scan.

You can calculate the worst case time between transfers in two steps.

The facts are:

- Processor scan time (PS) = 15 ms/1K words
  - Processor I/O scan time (PIO) = 5 ms
  - Number of words transferred (W) = 2 (read) or 20 (write)
1. Calculate the block-transfer time (T) for the read and write operation.
    - T = 0.08 ms/word x number of words transferred



The same equation is used for read and write transfer times.

2. Calculate the worst case system time (ST) between two block-transfer-read operations.
  - $ST = PS + PIO + T(\text{read}) + PS + PIO = T(\text{write})$

### Example 3

A Mini-PLC-2/15 programmable controller is communicating with one encoder module in its I/O chassis. The ladder diagram program contains 2K words.

Solution:

The facts are:

- Program length = 2K words
  - Processor scan time (PS) = (15 ms/1K words) x (2K words) = 30 ms
  - Processor I/O scan time (PIO) = 5 ms
  - Number of words transferred (W) = 2 (read), 20 (write)
3. Calculate the block-transfer time (T) for the read and write operation.
    - $T = 0.08 \text{ ms/word} \times 2 \text{ words (read)}$   
 $= 0.16 \text{ ms (read)}$
    - $T = 0.08 \text{ ms/word} \times 20 \text{ words (write)}$   
 $= 1.6 \text{ ms/(write)}$
  4. Calculate the worst case system item (ST) between two consecutive block-transfer-read operations.
    - $ST = PS + PIO + T(\text{read}) + PS + PIO + T(\text{write})$   
 $= 30 + 5 + .16 + 30 + 5 + 1.6$   
 $= 71.76 \text{ ms}$

This is the worst case time between two consecutive block-transfer-read operations for the Mini-PLC-2/15 controller.

### Block-transfer Timing for PLC-3 Family Processors

The execution time required to complete a block-transfer-read or -write operation with a PLC-3 family processor depends on the number of:

- words of user program
- active I/O channels on the scanner

- I/O chassis entries in the rack list for the channel
- I/O channels on the scanner that contain block-transfer modules
- block-transfer modules on the channel (if the I/O chassis containing a block-transfer module appears more than once in the I/O chassis rack list, count the module once each time the chassis appears in the rack list.)

The typical time required for the encoder module to complete a block-transfer-read/-write (bidirectional) depends on the program scan and the scanner scan as follows:

$$\text{Time [read/write]} = \text{program scan} + 2(\text{scanner scan})$$

**Program Scan:** The program scan is approximately 2.5 ms per 1K words or user program when using examine on/off and block instructions.

**Scanner Scan:** The time required for the scanner to complete a re- or write-block transfer depends on the number of other block-transfer modules on the same scanner channel that are enabled simultaneously.

Block-transfer times typically are similar regardless of the type of block-transfer module, the number of words transferred, or whether a read or write operation is requested.

A block-transfer I/O channel is a channel that contains one or more block-transfer modules located in any chassis connected to the channel.

An I/O chassis can appear more than once in a rack list of I/O chassis. Count the chassis and the block-transfer module(s) that it contains as often as it is listed.

The procedure for calculating block-transfer timing for a PLC-3 processor is given here followed by an example calculation:

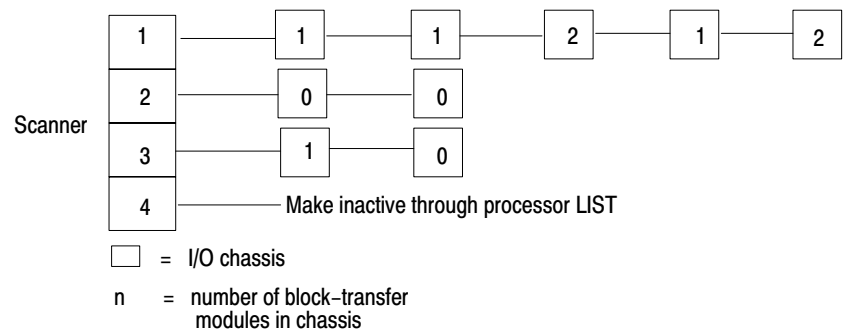
1. Determine the number of active I/O channels on the scanner and the number of I/O channels with block-transfer modules. Show the number of:
  - block-transfer modules in each I/O chassis
  - block-transfer I/O channels
  - I/O chassis entries in the rack list for each block-transfer I/O channel
  - active I/O channels per scanner

2. Determine the nominal block-transfer time.
3. Compute the approximate scanner time for each block-transfer channel.
4. Compute the encoder re-/write-block-transfer time.

### Example Computation

An example computation to determine the block-transfer timing with a PLC-3 family processor follows. The example is based on these facts:

- user program contains 20K words
  - channel 1 contains five I/O chassis with a total of seven block-transfer modules including one encoder module
  - channel 2 contains two I/O chassis with no block-transfer modules
  - channel 3 contains two I/O chassis with one encoder module
  - channel 4 is made inactive through processor LIST
1. Diagram the chassis connected in series to each channel (up to four) of your scanner module. Then, fill in the information called for below. Example values have been added.



Description	Number	Ch1	Ch2	Ch3	Ch4
Active I/O channels	3				
Block-transfer I/O channels	2				
Block-transfer modules on each I/O block-transfer channel		7	0	1	0
I/O chassis on each block-transfer I/O channel (I/O chassis in rack list)		5	0	2	0

2. Determine a time from the table. Example values have been added.

		1	2	3	4
Active I/O channels containing one or more block-transfer modules	1	40	52	54	58
	2		67	68	76
	3			98	99
	4				123
	Time (ms)				

Number of active I/O channels: 3

Number of active I/O channels containing one or more block-transfer modules: 2

Time, from table: 68 ms

3. Compute the scanner times for each block-transfer channel. Example values have been added.

(CT = Channel Time).

$$CT = [\text{Time}] \times [\#BT \text{ modules}] + [\#I/O \text{ chassis} - 1] \times 9 \text{ ms}$$

(table)      on BT channel      on BT channel

$$CT1 = [68] \times [7] + [5-1] \times 9$$

$$= [68] \times [7] + [4] \times 9$$

$$= 476 + 36$$

$$= 512 \text{ ms}$$

CT2 = Not a block-transfer channel

$$\text{CT3} = [68] \times [1] + 1 \times 9$$

$$= 68 + 9$$

$$= 77 \text{ ms}$$

CT4 = Not an active channel

4. Compute the encoder read-/write-block-transfer time. Example values have been added.

**Program Scan:**

$$\text{Time (program)} = 2.5 \text{ ms/1K words} \times 20\text{K words}$$

$$= 2.5 \times 20$$

$$= 50 \text{ ms}$$

**Scanner Scan:**

Time (read or write) = 512 ms for channel 1 and 77 ms for channel 3 (from Step 3).

**Read/Write**

$$\text{Time} = \text{Program scan} + 2 [\text{Scanner scan}]$$

$$\text{(encoder} = 50 + 2 [512]$$

$$\text{module in} = 50 + 1024$$

$$\text{channel 1)} = 1074 \text{ ms}$$

$$= 1.1 \text{ seconds}$$

$$\text{Time} = \text{Program scan} + 2 [\text{Scanner scan}]$$

$$\text{(encoder} = 50 + 2 [77]$$

$$\text{module in} = 204 \text{ ms}$$

$$\text{channel 3)}$$

## Application Considerations

### Application Considerations

The absolute encoder module can control outputs within a one-count resolution (turn an output on at position 065 and off at position 066) if shaft speed does not exceed a certain limit. This speed limit depends on the number of outputs and the number of counts on the encoder. It can be found from:

$$S = K/N$$

where S = maximum shaft speed for one-count resolution; K = a constant; and N = number of counts on the encoder. The value of K depends on whether you want to express shaft speed in revolutions per second (rps) or revolutions per minute (rpm).

If you control:	Then K = (for rps)	OR	K=(for rpm)
8 outputs	5000		300,000
6 outputs	6493		389,610
4 outputs	9009		540,540
2 outputs	14,084		845,070

For example, if you control eight outputs with a 0 to 359-count encoder, and the encoder shaft speed is given in revolutions per minute, the equation is:

$$S = \frac{300,000}{360} = 833 \text{ rpm}$$

The maximum encoder shaft speed at which you can control eight outputs within a one-count resolution is 833 rpm.

Let's consider two examples to show the importance of shaft speed, number of outputs to be controlled, and number of encoder counts in obtaining optimum module operation.

In both examples we use a 0 to 359-count encoder, all eight outputs are under control, and the output is to turn on at position 000 and off at position 001.

In the first sample (Figure B.1), we assume that the encoder shaft is turning close to the maximum allowable shaft speed according to the above equation. The shaft is in each discrete position for only 220 us, giving 360 increments (or one revolution) every 79 ms. This is equal to about 758 rpm.

In the second example (Figure B.2), we assume a more typical shaft speed of 60 rpm, or one revolution per second. The encoder spends about 2.8 ms in each discrete position.

**Figure B.1**  
Encoder Operating Near Maximum Speed (758 RPM)

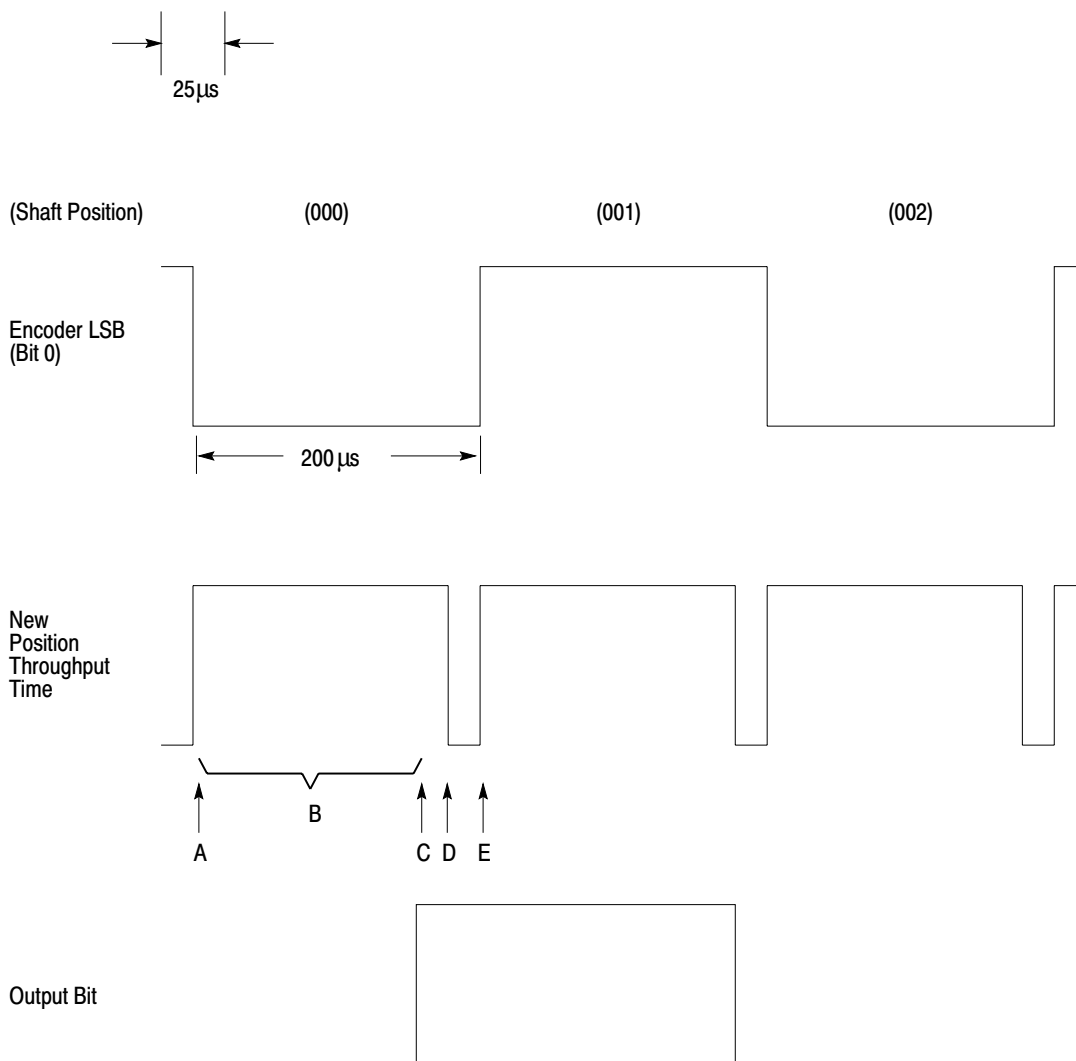
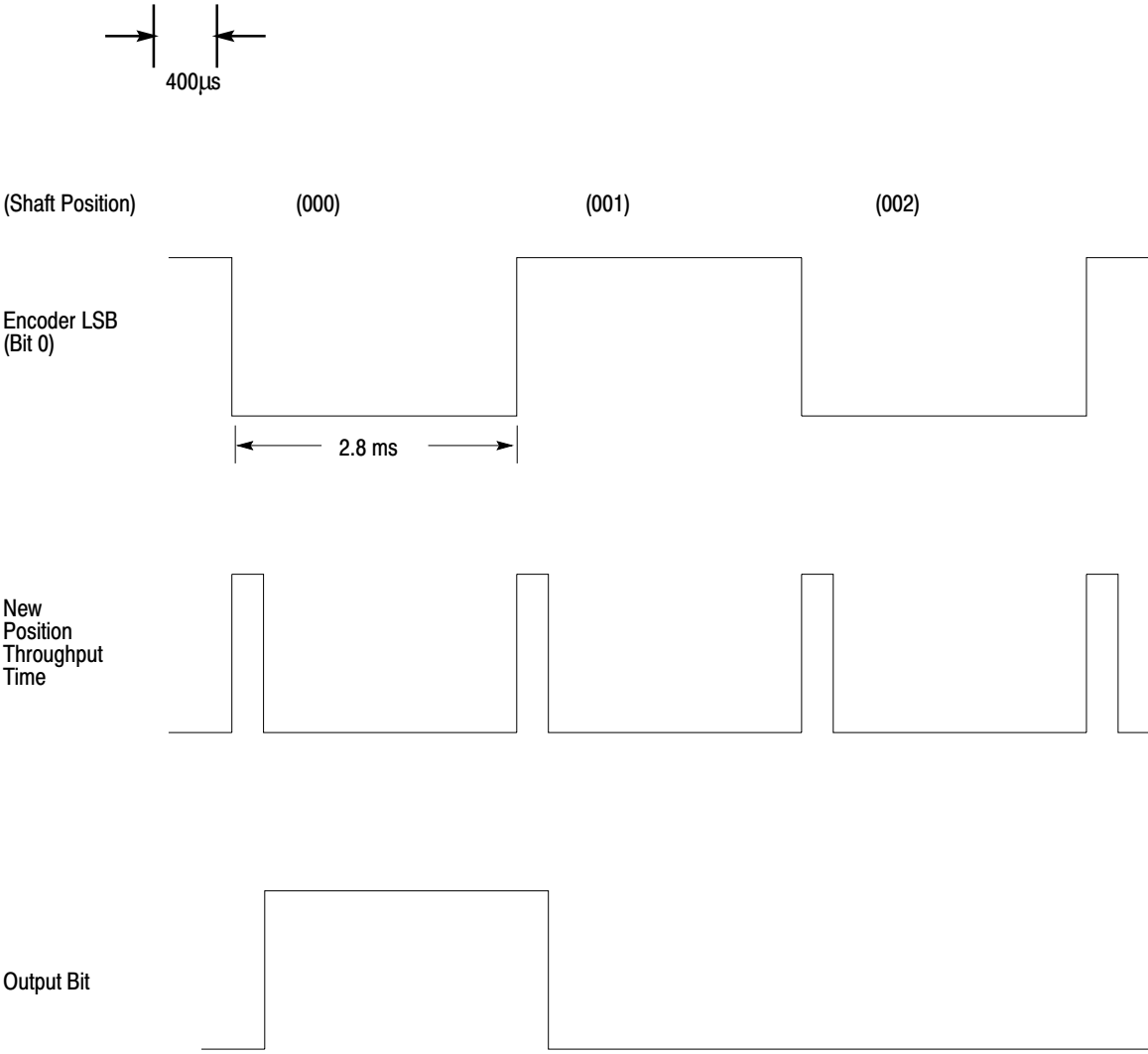


Figure B.2  
Encoder Operating at Typical Speed (60 RPM)



13307

The first waveform of Figure B.1 and Figure B.2 represents the least significant bit (LSB), or bit 0, of a BCD or binary encoder. The LSB changes with every change in encoder position (one increment of shaft rotation). This bit has the highest input frequency of all encoder channels because it changes state most often. Although the LSB on standard Gray encoders does not toggle with each increment in shaft position, circuitry on the module converts the Gray code to binary code to be used by the module.



The second waveform represents the new position throughput time of the module. The third waveform represents an output programmed to turn on an actuator device (waveform high) when the encoder position is 000 and to turn it off (waveform low) when the encoder position is 001.

The new position throughput time of the module is based on the following sequence of events:

- a. The encoder shaft increases one position.
- b. All 16 presets are compared to the encoder position.
- c. The module updates the outputs.
- d. The outputs are in the correct state for the given position, and the scan period is complete.
- e. The module scan begins with the next increase in the encoder shaft position and the process then repeats.

Let's look at the first example, where the encoder is operating near maximum speed and control is maintained over a one-count resolution. Comparing the input and output waveforms, the output bit comes on when the encoder position is almost 001 and turns off when the position is almost 002. This is due to the time needed for the software comparison.

The second example shows waveforms for a speed of one revolution per second. Control is easily maintained over a one-count resolution, and the output appears to follow the input more closely.

In both examples, the module throughput time is the same, depending only on the number of outputs to be controlled (see table below). But with increasingly lower input frequencies (slower shaft speed), the delay from change in input to output control is smaller compared to the input period of an encoder increment.

<b>When Controlling:</b>	<b>New Position Throughput Time is:</b>
8 outputs	200 us
6 outputs	154 us
4 outputs	111 us
2 outputs	71 us

You must take into account the fixed throughput time, the number of outputs per module, and the number of increments between the preset values when determining the appropriate machine preset values for a design shaft speed. Due to the effects shown in the first example, you may want to adjust the preset values to account for the throughput time. This is important if the module is used near its maximum design speed.

If the maximum encoder shaft speed, determined from the above equations, is too slow for your application, you should consider the following.

If you increase the input speed slightly, you can still maintain control to a one-count resolution. However, the encoder position value and the output status read by the PC may not correspond. If, for example, you request an output to turn on at position 100, for one PC scan the PC might see a position value of 099 while the output-on bit is set. The comparisons will be performed correctly, but the status of the outputs read by the PC may not correspond to the encoder position value.

This may not matter in your application if you do not use the read-data in your PC application program. However, if this is not acceptable, you may be able to trade resolution for speed. Remember that the maximum shaft speed depends on the number of encoder positions. A 0 to 4,095-count encoder has a lower maximum rpm rating than a 0 to 359-count encoder. Similarly, a 0 to 99-count encoder turns at an even higher rotational speed to control within a one-count resolution.

You can also trade accuracy for speed. Suppose your application can tolerate having an output come on anywhere between position 030 and 035 and go off between 045 and 050. The encoder shaft may be turning fast enough to go through several positions during the module comparison processing time:

- The module reads position 028 during the first module scan and leaves the output off.

- During the next scan the module reads position 032 and turns the output on.

In this case you could program presets of 030 and 045 with the understanding that the change of output could occur a few increments after those positions.

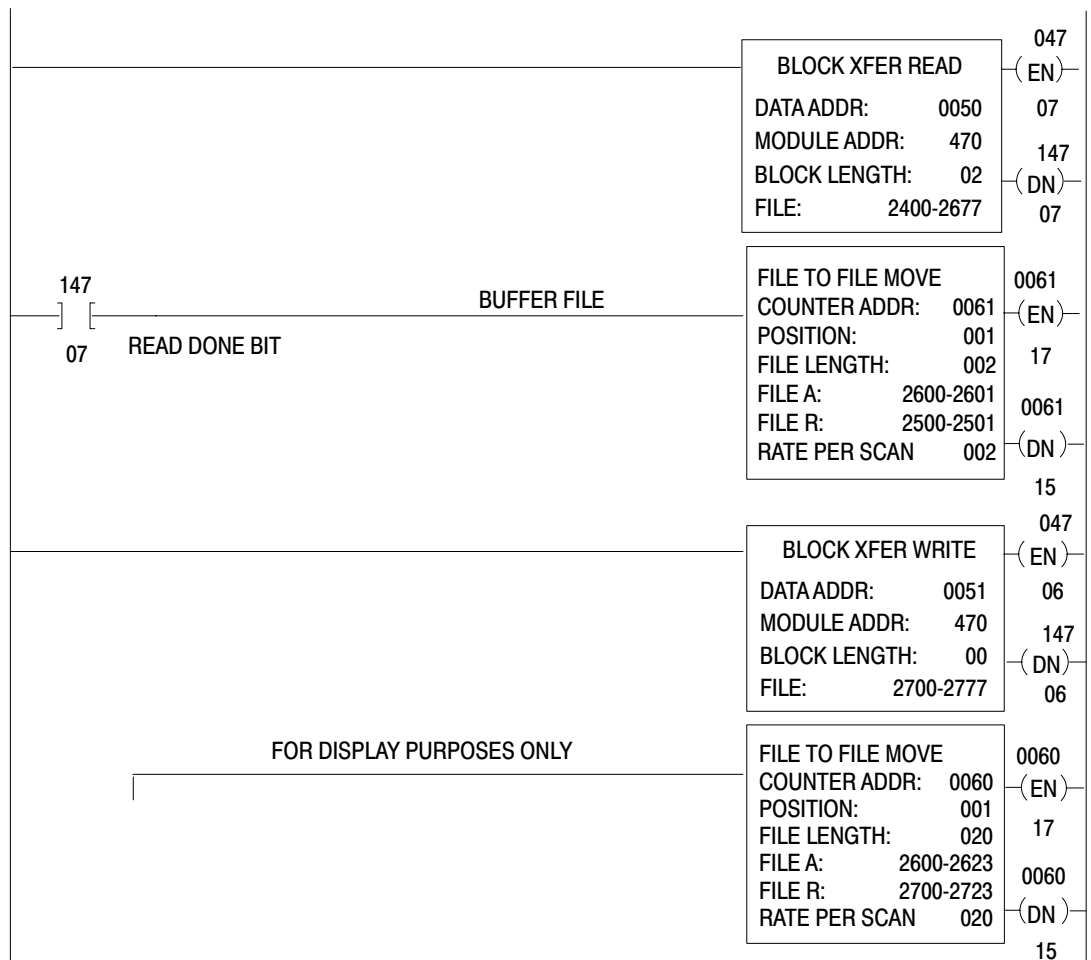
Hardware RC filtering in the module input circuitry is designed to attenuate high frequency noise spikes that may pass through the opto-isolators. The maximum practical input frequency to the module input terminals is limited to 50KHz.

## Block-transfer Ladder Diagram Examples

### Bidirectional Block-transfer for PLC-2 Family Processors

Figure C.1 illustrates the rungs you need to initiate a bidirectional block-transfer operation using a PLC-2 family processor.

**Figure C.1**  
Example Block-transfer Rungs for PLC-2 Family Processors



**Data Address:** 0050/051

This is the first possible address in the timer/counter area of the data table. Use the first available timer/counter address for your first block-transfer module data address.

**Module Address:** 470

The module is located in rack 4, I/O group 7, slot 0. (Two-slot modules are addressed as being in slot 0.)

**Block Length:** 00

Use the default value for the maximum number of words to read (two) and write (20). Although both files appear to be 64 words long, only two words are used for read operations and 20 words are used for write operations. The remaining words are available for storage.

**File:** 2600/2700

This is the address of the first word of the read/write file.

Use a file-to-file move to buffer your read data. Use addresses 2500 and 2501 when making data comparisons.

Rung 4 is entered for display purposes only. You do not need this rung in your program; it allows you to look at the read- and write-data files simultaneously.

Figure C.2 shows example values entered in the read- and write-data files. These values were chosen for a 0 to 359-count BCD encoder.

**Figure C.2  
Example Read-and Write-data File (PLC-2 Family Processors)**

**HEXADECIMAL DATA MONITOR  
FILE TO FILE MOVE  
POSITION: 001**

**COUNTER ADDR: 060  
FILE A: 2600 - 2623**

**FILE LENGTH: 020  
FILE R: 2700 - 2723**

<b>POSITION</b>	<b>FILE A DATA</b>	<b>FILE R DATA</b>
001	0200	9E9E
002	0054	0000
003	0000	0044
004	0000	0045
005	0000	0089
006	0000	9E9E
007	0000	0090
008	0000	0134
009	0000	0135
010	0000	0179
011	0000	9E9E
012	0000	0180
013	0000	0224
014	0000	0225
015	0000	0269
016	0000	9E9E
017	0000	0270
018	0000	0314
019	0000	0315
020	0000	0359

**READ-DATA  
FILE**
**WRITE-DATA  
FILE**

In these file examples, word 1 in the read-data file indicates output 1 is energized. Word 2 indicates that the current encoder position is 054.

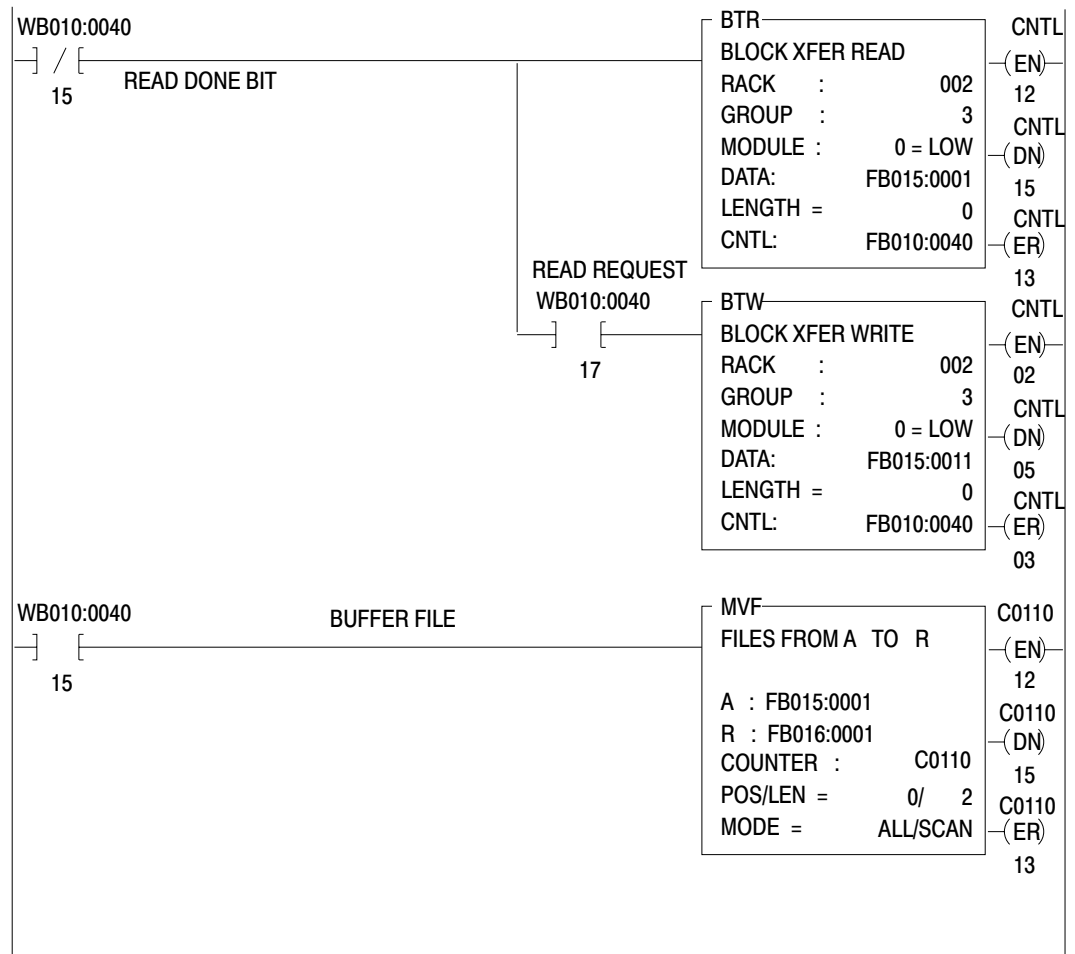
Thus, the current encoder position is between 045 and 089 (words 4 and 5), which are the presets for output 1.

**Bidirectional Block-transfer for PLC-3 Processors**

Figure C.3 shows you how to program a bidirectional block-transfer operation using a PLC-3 processor.

Figure C.4 gives example values entered in the write-data files and displayed in the read-data files. The values were chosen for use with a single-ended, 0 to 4,095-count binary encoder.

**Figure C.3**  
**Example Block-transfer Rungs for PLC-3 Processors**



Use a file-to-file move to buffer the read data. Use B016:0001 (status) and B016:0002 (position) for all data comparisons.

**Rack:** 002

The module is located in rack 2.

**Group:** 3

The module is located in I/O group 3.

**Module:** 0 = low

The module is in the low slot of the I/O group. (Two-slot modules are addressed as being in slot 0.)

**Data:** FB015:0001/FB015:0011

This is the address of the first word of the read/write file.

**Length:** 0

Use the default value for the maximum number of words to read (two) and write (20).

**CNTL:** FB010:0040/FB010:0040

This is the address of the block-transfer control file.



**Figure C.4**  
**Example Read-and Write-data Files (PLC-3 Processors)**

<b>RADIX = %H</b>	<b>START = WB015:0000</b>							
<b>WORD #</b>	<b>0</b>	<b>1</b>	<b>2</b>	<b>3</b>	<b>4</b>	<b>5</b>	<b>6</b>	<b>7</b>
00000	0000	0200	0693	0000	0000	0000	0000	0000
00008	0000	0000	0000	9E9E	0000	0511	0512	1023
00016	9E9E	1024	1535	1536	2047	9E9E	2048	2559
00024	2560	3071	9E9E	3072	3583	3584	4095	0000
00032	0000	0000	0000	0000	0000	0000	0000	0000
00040								

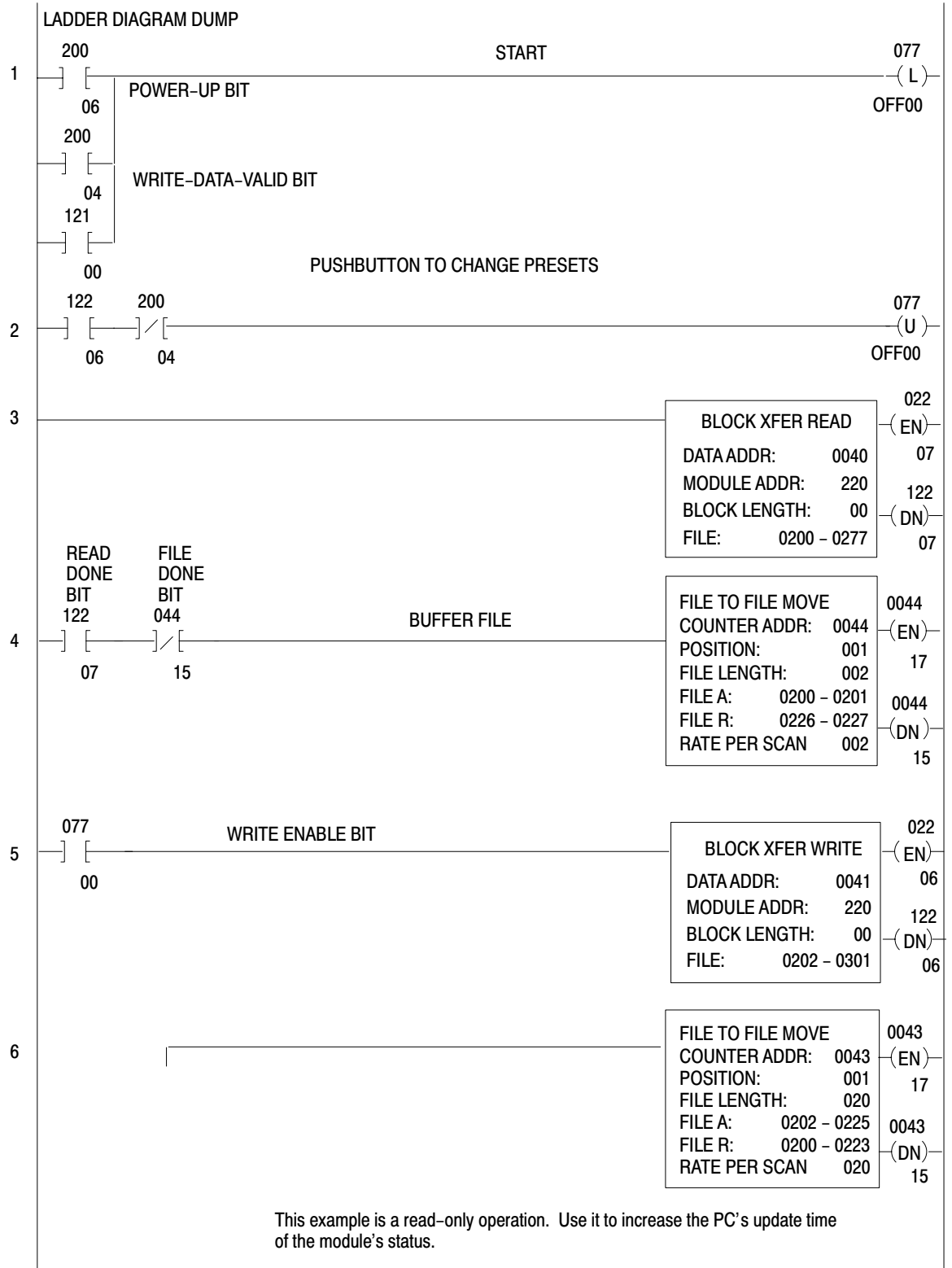
In this example:

- Word 1 shows that output 1 is energized.
- Word 2 indicates the current encoder position is 693.
- The current position is between the presets for output 1 (words 14 and 15).

## **Read-only Block-transfer for PLC-2 Family Processors**

Figure C.5 shows example rungs for a read-only block-transfer operation. Use this example to optimize your block-transfer timing.

**Figure C.5  
Example Read-only Block-transfer Program for PLC-2 Family Processors**



Rung 1	200/06 and 200/4 are returned in the read operation and latch 077/00. When 077/00 is latched, the module toggles between a read operation and a write operation.  121/00 is optional and lets the processor initiate a block-transfer-write operation.
Rung 2	This rung examines the write-done-bit (122/06) and the valid BCD data bit (200/04) to unlatch 077/00 and begin the read-only operation.
Rung 3	This rung contains the block-transfer-read instruction.
Rung 4	Use a file-to-file move to buffer the read data. Use addresses 0226 and 0227 when making any data comparisons.
Rung 5	A block-transfer-write is not done unless 077/00 is on.
Rung 6	This rung is for display purposes only.

## Bit and Word Descriptions of Block-transfer Data

### Block-transfer-write Data

### Control Word for Outputs 0 and 1

Bit No.	Title	Description
17	OE	Output enable bit – set this bit if you want output 1 turned on when comparisons with presets 1A and 1B are true.
16	ZT	Zero transition bit – set this bit when you want output 1 energized during a transition through position 000.
15	>	Comparison bit for preset 1B
14	=	Comparison bit for preset 1B
13	<	Comparison bit for preset 1B
12	>	Comparison bit for preset 1A
11	=	Comparison bit for preset 1A
10	<	Comparison bit for preset 1A
07	OE	Output enable bit – set this bit if you want output 0 turned on when comparisons with preset 1A and 1B are true.
06	ZT	Zero transition bit – set this bit when you want output 0 energized during a transition through position 000.
05	>	Comparison bit for preset 0B
04	=	Comparison bit for preset 0B
03	<	Comparison bit for preset 0B
02	>	Comparison bit for preset 0A
01	=	Comparison bit for preset 0A
00	<	Comparison bit for preset 0A

**Preset Words**

Word No.	Description
2	Preset value A for output 0
3	Preset value B for output 0
4	Preset value A for output 1
5	Preset value B for output 1
7	Preset value A for output 2
8	Preset value B for output 2
9	Preset value A for output 3
10	Preset value B for output 3
12	Preset value A for output 4
13	Preset value B for output 4
14	Preset value A for output 5
15	Preset value B for output 5
17	Preset value A for output 6
18	Preset value B for output 6
19	Preset value A for output 7
20	Preset value B for output 7

**Block-transfer-read Data**

**Read-data Words**

Word No.	Bit No.	Description
1	17	Status of output 7
	16	Status of output 6
	15	Status of output 5
	14	Status of output 4
	13	Status of output 3
	12	Status of output 2
	11	Status of output 1
	10	Status of output 0
	07	Loss-of-input-power bit – bit is set when input power is lost; it is reset when power is restored <b>and</b> bit 6 is reset.

Word No.	Bit No.	Description
	06	Write-data-valid bit – bit is set at power up and when the processor changes from program to run mode; it is reset when the module receives valid write data.
	05	Unused
	04	Non-BCD preset flag – bit is set when any preset is in non-BCD format.
	03 through 00	These bits are binary or hexadecimal code that indicates which of the 16 presets is not in BCD format. Refer to the next section for details of these bits.
2	17 through 00	Current absolute position of encoder in BCD

**Value of Diagnostic Bits 00 through 03**

If non-BCD digit is in word:	Then it is preset:	And the Hex error code is:	And the binary equivalent is:
2	0A	0	0000
3	0B	1	0001
4	1A	2	0010
5	1B	3	0011
7	2A	4	0100
8	2B	5	0101
9	3A	6	0110
10	3B	7	0111
12	4A	8	1000
13	4B	9	1001
14	5A	A	1010
15	5B	B	1011
17	6A	C	1100
18	6B	D	1101

## Appendix D

<b>If non-BCD digit is in word:</b>	<b>Then it is preset:</b>	<b>And the Hex error code is:</b>	<b>And the binary equivalent is:</b>
19	7A	E	1110
20	7B	F	1111

## Connection Diagrams for Allen-Bradley Encoders

### Connection Diagrams for Allen-Bradley Encoders

Figures E.1 through Figure E.3 show you how to connect several Allen-Bradley encoders to the absolute encoder module:

- Figure E.1 shows you how to connect a Bulletin 845A encoder, 0 to 359-count, 10-bit, BCD, single-ended output encoder.
- Figure E.2 shows you how to connect a Bulletin 845A encoder, 0 to 255-count, 8-bit, Standard Gray, single-ended output encoder.
- Figure E.3 shows you the connections for a Bulletin 845C encoder, 0 to 359-count, 10-bit, BCD, single-ended output, latching encoder.

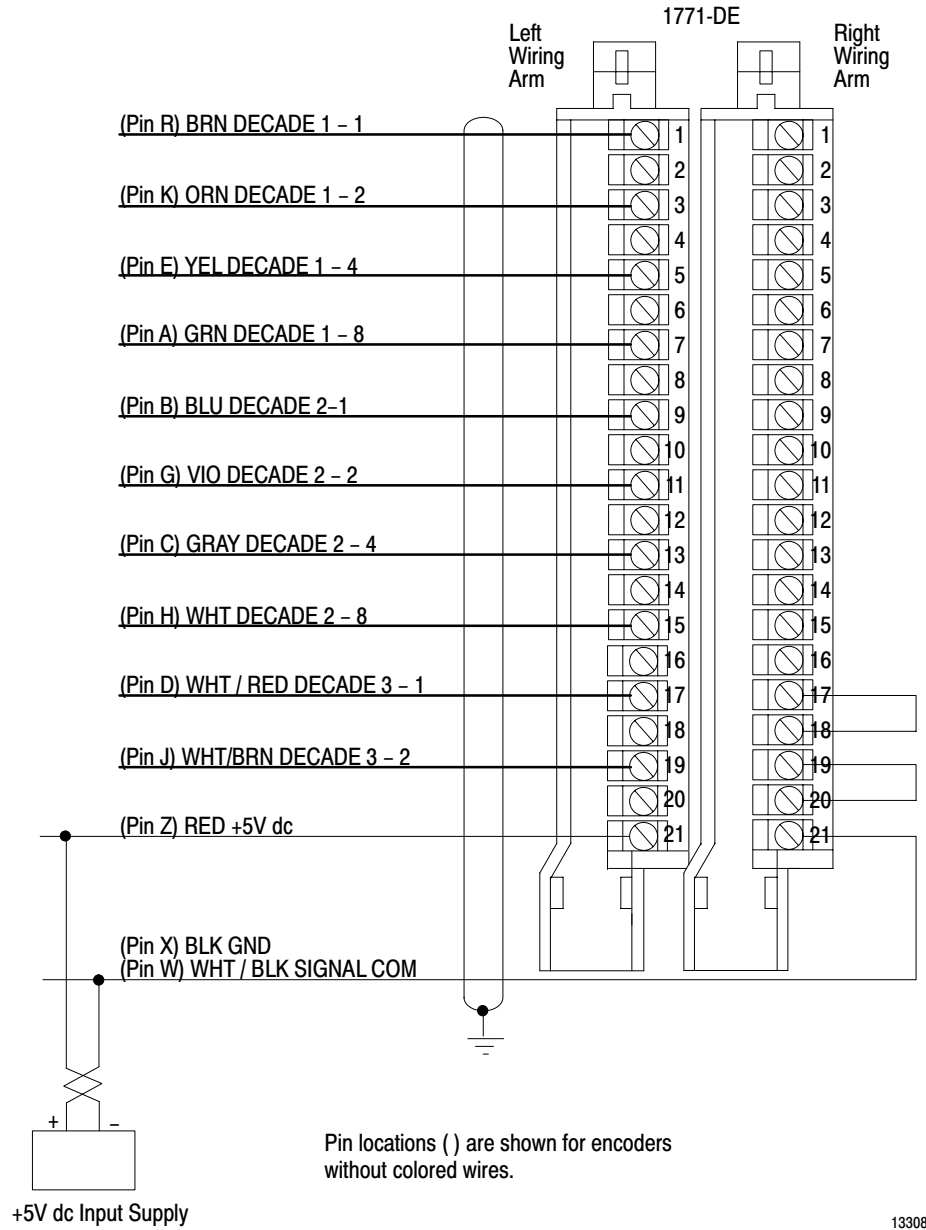
### 0 to 359-count, 10-bit, BCD, Single-ended Output

Follow these guidelines:

- Make the wht/orn wire (pin V) an open connection.
- The encoder counts up in a counterclockwise direction if you make the wht/yel wire (pin Q) an open connection or if you connect it to +5V; if you connect it to ground, the encoder counts up in a clockwise direction.
- Signal common wht/blk (pin W) and ground blk (pin X) are internally connected on the encoder.
- Jumper the unused most-significant-bit input terminals.



**Figure E.1**  
**Connection Diagram for Allen-Bradley Encoder, Bulletin 845A (BCD)**



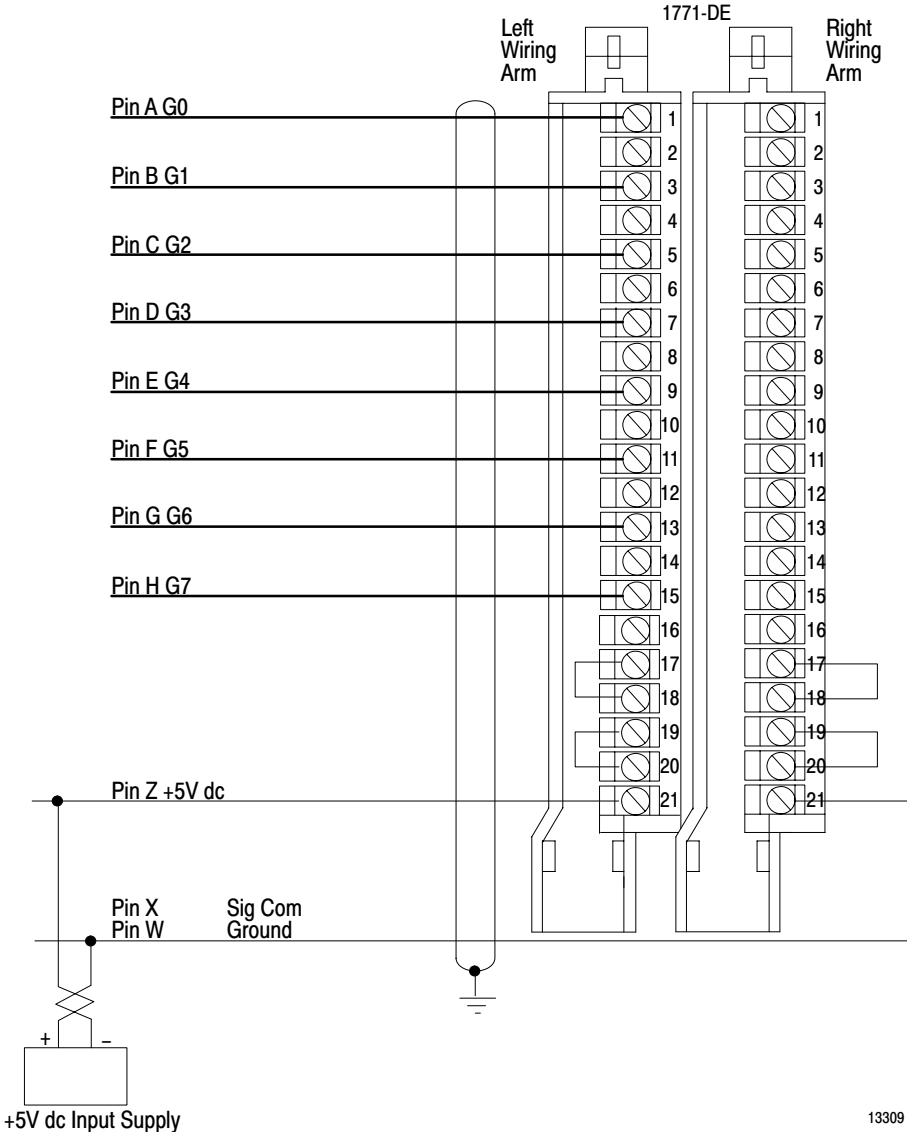
13308

**0 to 255-count, 8-bit, Standard Gray, Single-ended Output**

Follow these guidelines:

- Set configuration plug E15 on the absolute encoder module to the right position for increasing position.
- Signal common (pin X) and ground (pin W) are internally connected on the encoder.
- The encoder counts up in a clockwise direction when you connect pin J instead of pin H.
- Leave pins V and Q unconnected.
- Jumper the unused most-significant-bit input terminals.

**Figure E.2**  
**Connection Diagram for Allen-Bradley Encoder, Bulletin 845A (Standard Gray)**



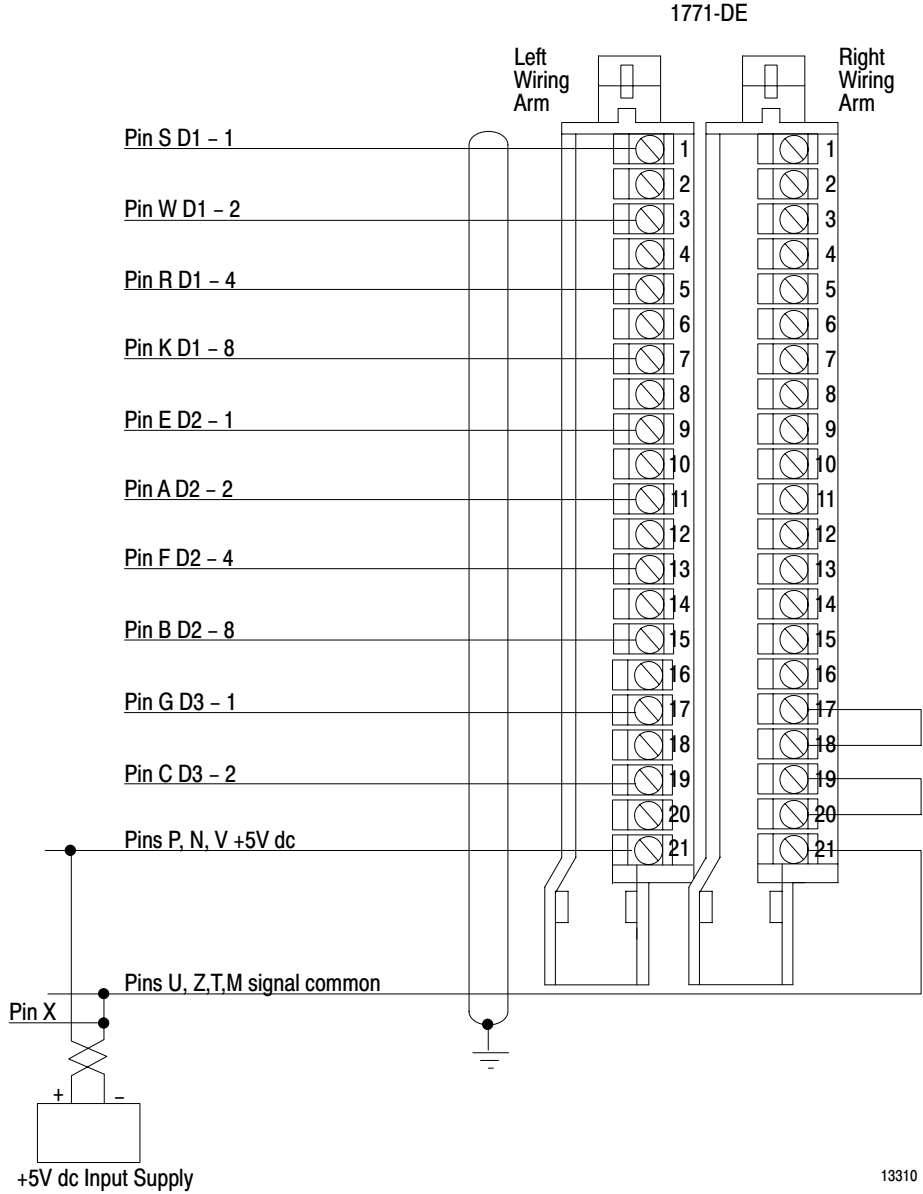
13309

### **0 to 359-count, 10-bit, BCD, Single-ended Output, Latching**

Follow these guidelines:

- The encoder counts up in a counterclockwise direction if you make pin H an open connection or if you connect it to +5V; if you connect it to ground, the encoder counts up in a clockwise direction.
- Pins P, N, and V are internally connected on the encoder.
- Pins U, Z, T, and M are internally connected on the encode.
- Encoder output requires +5V DC; jumper pins P, N, and V to pin Y. Leave pin L unconnected.
- Ground pin X for normal operation.
- Leave pins J, D, and Q unconnected.
- Jumper the unused most-significant-bit input terminals.

Figure E.3  
 Connection Diagram for Allen-Bradley Encoder, Bulletin 845C (BCD)



13310

## Glossary

This glossary defines terms pertaining to Allen–Bradley Absolute Encoder Modules. For a broader glossary of programmable controller words, refer to our Programmable Controller Terms (publication no. PCGI–7.2).

**ABSOLUTE ENCODER:**

An encoder with a unique digital output code for each increment of shaft rotation

**BIDIRECTIONAL BLOCK TRANSFER:**

The performance of alternating read and write operations between an intelligent I/O module and the processor data table

**DIFFERENTIAL OUTPUT ENCODER:**

An encoder using differential line driver output devices that have a bit  $x$  and  $\bar{\text{bit}} x$  output signals

**ENCODER DATA SETTling TIME:**

The time required for encoder data to settle to reflect a new position

**GRAY CODE:**

A binary numbering system modified so that only 1 bit changes as the counting number increases.

**MAXIMUM ENCODER SHAFT SPEED:**

The maximum speed at which the encoder shaft can turn to give a one–count resolution while controlling a particular number of outputs.

**NEW POSITION THROUGHPUT TIME:**

The time between a certain state being applied to the input terminals and

the appropriate response occurring at the output terminals; it depends on the number of outputs the module is controlling

**NEW WRITE-DATA THROUGHPUT TIME:**

The time between the end of a block-transfer-write operation and the module update of outputs

**ONE-COUNT RESOLUTION:**

The ability of the module to perform within one increment of shaft rotation; for example, turn on an output at position 007 and off at position 008

**PRESET VALUE:**

The value against which the absolute position of the encoder is compared to control an output

**SINGLE-ENDED OUTPUT ENCODER:**

An encoder using single-ended (totem pole or open collector) output devices that have bit x and common output signals. Each bit may have a common terminal, or all common terminals may be tied to the power supply ground or common terminal in the encoder.

## Symbols

\*\*Empty\*\*, [2-1](#), [2-2](#), [3-9](#), [D-1](#)

## A

Application Considerations, [B-1](#)

## B

Block-transfer-write Data, [4-1](#)

Block-transfer Timing

PLC-2/15, [A-7](#)

PLC-2/30 Local System, [A-4](#)

PLC-2/30 Remote System, [A-1](#)

PLC-3, [A-9](#)

Block-transfer-read Data, [D-2](#)

Block-transfer-read-Data, [4-4](#)

## C

Cabling, [3-8](#)

Compatible Encoders, [2-2](#)

Configuration Plugs, Location

Setting, [3-3](#)

Settings, [3-2](#)

Connections

Output Devices, [3-10](#)

Power Supplies, [3-5](#)

Control Words, [4-3](#), [D-1](#)

## D

Diagnostic Bits, [D-3](#)

## E

Encoder, [3-9](#)

Format, [2-2](#), [3-3](#)

Input Signal Mode, [3-3](#)

Example Applications, [2-1](#)

## F

Fuses, [2-3](#), [2-6](#)

## G

Glossary, [F-1](#)

## I

Installation, [3-11](#)

## K

Keying, [2-7](#), [3-4](#)

## M

Module Functions, [2-1](#)

module throughput time, [B-4](#)

## O

one-count resolution, [B-1](#)

## P

Power Requirements

Input, [2-6](#)

Output, [3-5](#)

Output, [2-6](#), [3-7](#)

Preset Words, [4-3](#), [D-2](#)

Programming Considerations, [4-7](#)

Programming Example, [4-5](#)

## S

Specifications, [2-6](#)

State of Output Upon Loss of Input Power,  
[2-2](#)

Status Indicator, [2-3](#)

## T

Terminal Identification, [2-5](#)

Troubleshooting, [6-1](#)



Allen-Bradley, a Rockwell Automation Business, has been helping its customers improve productivity and quality for more than 90 years. We design, manufacture and support a broad range of automation products worldwide. They include logic processors, power and motion control devices, operator interfaces, sensors and a variety of software. Rockwell is one of the world's leading technology companies.



## Worldwide representation.

Argentina • Australia • Austria • Bahrain • Belgium • Brazil • Bulgaria • Canada • Chile • China, PRC • Colombia • Costa Rica • Croatia • Cyprus • Czech Republic • Denmark • Ecuador • Egypt • El Salvador • Finland • France • Germany • Greece • Guatemala • Honduras • Hong Kong • Hungary • Iceland • India • Indonesia • Ireland • Israel • Italy • Jamaica • Japan • Jordan • Korea • Kuwait • Lebanon • Malaysia • Mexico • Netherlands • New Zealand • Norway • Pakistan • Peru • Philippines • Poland • Portugal • Puerto Rico • Qatar • Romania • Russia-CIS • Saudi Arabia • Singapore • Slovakia • Slovenia • South Africa, Republic • Spain • Sweden • Switzerland • Taiwan • Thailand • Turkey • United Arab Emirates • United Kingdom • United States • Uruguay • Venezuela • Yugoslavia

Allen-Bradley Headquarters, 1201 South Second Street, Milwaukee, WI 53204 USA, Tel: (1) 414 382-2000 Fax: (1) 414 382-4444