



PowerFlex 7-Class Human Interface Module Series A Firmware v3.010

This release note describes major revision 3, minor revision 10 of firmware for the following:

- 20-HIM-A3 Series A
- 20-HIM-A5 Series A
- 20-HIM-C3S Series A
- 20-HIM-C5S Series A

Introduction

The following information is included in this document:

For information about:	See page:
Enhancements	1
Corrected Anomalies	1
Determining Firmware Revision	2
Firmware Flashing	4
Restrictions	6
Compatible Revisions	6
Rockwell Automation Support	6
Product Satisfaction Return	7

Enhancements

There are no enhancements provided with this revision of firmware.

Corrected Anomalies








This section describes the anomalies corrected in this revision of firmware:

- Corrects initialization sequence that caused boot code upload failure and subsequent application code upload failure.
- Enables PowerFlex 7-Class HIMs with firmware v3.008 to be updated to newer firmware, including this firmware release (v3.010).

Determining Firmware Revision

This section describes procedures to determine the firmware revision of your 20-HIM-xx module.

Using the LCD HIM (20-HIM-xx)

Step	Key(s)	Example Screens																		
1. In the Main Menu, press the Up Arrow or Down Arrow to scroll to Diagnostics .	 or 	<table border="1"> <tr> <td>F-></td> <td>Stopped</td> <td>Auto</td> </tr> <tr> <td></td> <td>0.0</td> <td>Hz</td> </tr> <tr> <td colspan="3">Main Menu:</td> </tr> <tr> <td colspan="3">Diagnostics</td> </tr> <tr> <td colspan="3">Parameter</td> </tr> <tr> <td colspan="3">Device Select</td> </tr> </table>	F->	Stopped	Auto		0.0	Hz	Main Menu:			Diagnostics			Parameter			Device Select		
F->	Stopped	Auto																		
	0.0	Hz																		
Main Menu:																				
Diagnostics																				
Parameter																				
Device Select																				
2. Press Enter to enter your selection.		<table border="1"> <tr> <td>F-></td> <td>Stopped</td> <td>Auto</td> </tr> <tr> <td></td> <td>0.0</td> <td>Hz</td> </tr> <tr> <td colspan="3">Diagnostics:</td> </tr> <tr> <td colspan="3">Device Items</td> </tr> <tr> <td colspan="3">Device Version</td> </tr> <tr> <td colspan="3">HIM Version</td> </tr> </table>	F->	Stopped	Auto		0.0	Hz	Diagnostics:			Device Items			Device Version			HIM Version		
F->	Stopped	Auto																		
	0.0	Hz																		
Diagnostics:																				
Device Items																				
Device Version																				
HIM Version																				
3. Press the Up Arrow or Down Arrow to scroll to HIM Version .	 or 	<table border="1"> <tr> <td>F-></td> <td>Stopped</td> <td>Auto</td> </tr> <tr> <td></td> <td>0.0</td> <td>Hz</td> </tr> <tr> <td colspan="3">Diagnostics:</td> </tr> <tr> <td colspan="3">Device Items</td> </tr> <tr> <td colspan="3">Device Version</td> </tr> <tr> <td colspan="3">HIM Version</td> </tr> </table>	F->	Stopped	Auto		0.0	Hz	Diagnostics:			Device Items			Device Version			HIM Version		
F->	Stopped	Auto																		
	0.0	Hz																		
Diagnostics:																				
Device Items																				
Device Version																				
HIM Version																				
4. Press Enter to display the Product Data screen.		<table border="1"> <tr> <td>F-></td> <td>Stopped</td> <td>Auto</td> </tr> <tr> <td></td> <td>0.0</td> <td>Hz</td> </tr> <tr> <td colspan="3">Diag: Prodct Ver</td> </tr> <tr> <td colspan="3">FW Ver: 3.008</td> </tr> <tr> <td colspan="3">Series: A</td> </tr> <tr> <td colspan="3">Date: 3/15/2007</td> </tr> </table>	F->	Stopped	Auto		0.0	Hz	Diag: Prodct Ver			FW Ver: 3.008			Series: A			Date: 3/15/2007		
F->	Stopped	Auto																		
	0.0	Hz																		
Diag: Prodct Ver																				
FW Ver: 3.008																				
Series: A																				
Date: 3/15/2007																				
5. Press Enter again to display the HIM's firmware version.		<table border="1"> <tr> <td>F-></td> <td>Stopped</td> <td>Auto</td> </tr> <tr> <td></td> <td>0.0</td> <td>Hz</td> </tr> <tr> <td colspan="3">Diag: Prodct Ver</td> </tr> <tr> <td colspan="3">FW Ver: 3.008</td> </tr> <tr> <td colspan="3">Series: A</td> </tr> <tr> <td colspan="3">Date: 3/15/2007</td> </tr> </table>	F->	Stopped	Auto		0.0	Hz	Diag: Prodct Ver			FW Ver: 3.008			Series: A			Date: 3/15/2007		
F->	Stopped	Auto																		
	0.0	Hz																		
Diag: Prodct Ver																				
FW Ver: 3.008																				
Series: A																				
Date: 3/15/2007																				

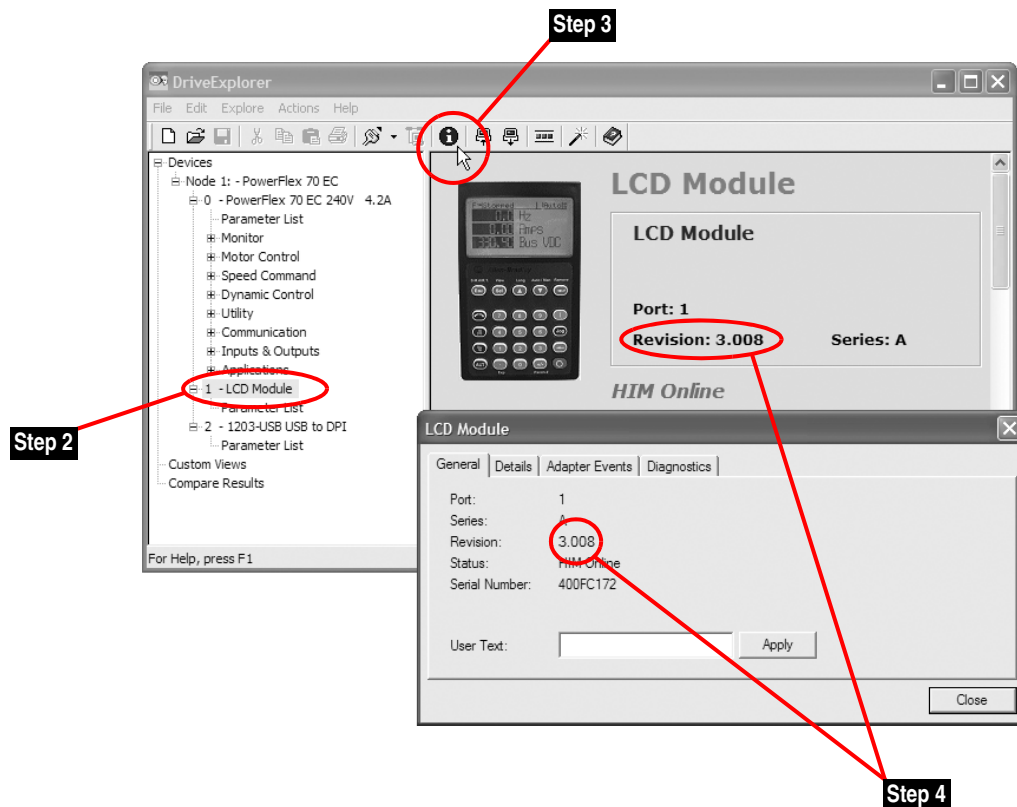
Using DriveExplorer Lite/Full

1. Launch DriveExplorer and go online (via 1203-USB or 1203-SSS converter) with the drive that is connected to the HIM. As an alternative when using DriveExplorer Full, you can go online with the drive on Ethernet through a connected 20-COMM-E communication adapter.
2. In the DriveExplorer treeview, click on the LCD Module as shown in [Figure 1](#).
3. Click the information icon to display the HIM's Properties screen.
4. The "Revision:" field shows the present revision (for example, 3.008) of the HIM firmware.



TIP: When clicking on the LCD Module using version 5.01 or higher DriveExplorer Lite/Full, the HIM firmware revision is also shown in the right pane of the DriveExplorer window.

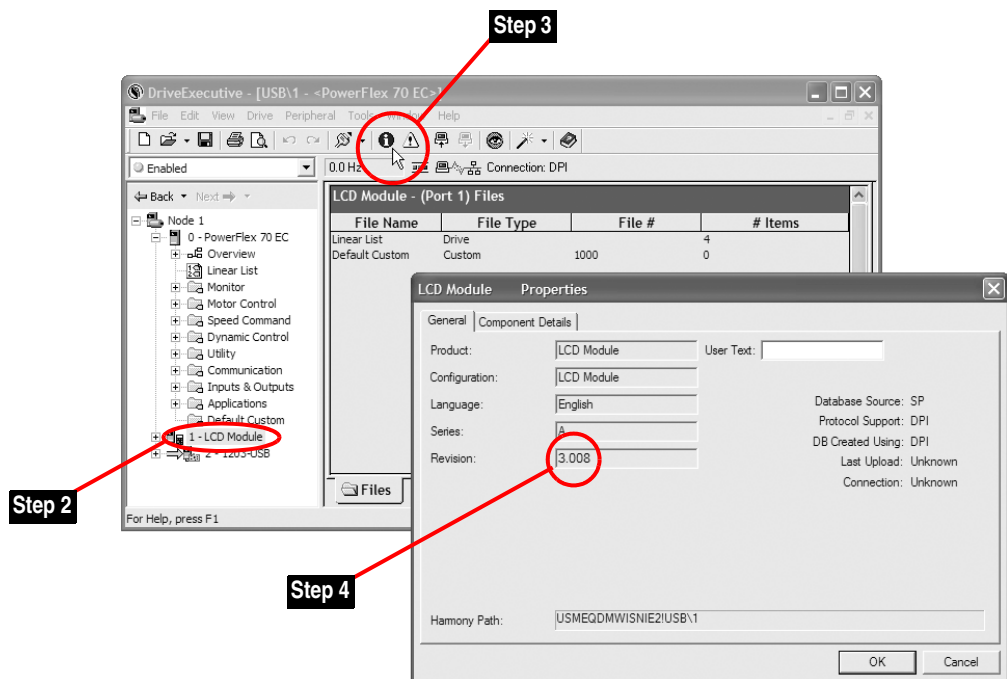
Figure 1 Information Icon in DriveExplorer Window



Using DriveExecutive

1. Launch DriveExecutive and go online with the drive that is connected to the HIM.
2. In the DriveExecutive treeview, click on the LCD Module as shown in [Figure 2](#).
3. Click the information icon to display the HIM's Properties screen.
4. The "Revision:" field shows the present revision (for example, 3.008) of the HIM firmware.

Figure 2 Information Icon in DriveExecutive Window



Firmware Flashing

This section describes procedures to flash upgrade your HIM firmware. Flash kits for drives, communications adapters, and peripherals are provided on the Allen-Bradley Web Updates site located at <http://www.ab.com/support/abdrives/webupdate>.



ATTENTION: Risk of permanent equipment damage exists. Once a flash update has been started, do not remove power from the drive until after the download has completed and the HIM has re-initialized with the connected drive. If power is removed before this occurs, the HIM may be permanently damaged. A HIM that has been damaged in this way cannot be repaired.

Installing the Flash Kit

1. Install the flash kit utility from the Allen-Bradley Web Updates site for the 20-HIM-xx. (This also automatically installs the latest version of the ControlFLASH utility on your computer.)
2. You are now ready to use DriveExplorer, DriveExecutive or ControlFLASH to update the HIM. Follow the instructions in the appropriate section below.

Using DriveExplorer Lite/Full

1. With the Flash Kit installed (see [Installing the Flash Kit](#)), launch DriveExplorer and go online (via a 1203-USB or 1203-SSS converter) with the drive that is connected to the HIM.
2. In the DriveExplorer treeview, click on the LCD Module. Then click the information icon as shown in [Figure 1](#) to display the HIM's Properties screen.
3. On the LCD Module Properties screen, click the Details tab.

Important: This update may cause the HIM parameters to revert to their default values. You may want to save your configuration using DriveExplorer or the HIM CopyCat feature before upgrading.

4. To start the flash update, click the **Flash Update...** button. Follow the screen prompts until the flash update procedure completes and displays the new firmware revision (v3.010).

Using DriveExecutive

1. With the Flash Kit installed (see [Installing the Flash Kit](#)), launch DriveExecutive and go online with the drive that is connected to the HIM.
2. In the DriveExecutive treeview, click on the LCD Module. Then click the information icon as shown in [Figure 2](#) to display the HIM's Properties screen.
3. On the LCD Module Properties screen, click the Component Details tab.

Important: This update may cause the HIM parameters to revert to their default values. You may want to save your configuration using DriveExecutive or the HIM CopyCat feature before upgrading.

4. To start the flash update, click the **Flash Update** button. Follow the screen prompts until the flash update procedure completes and displays the new firmware revision (v3.010).

Using ControlFLASH

1. With the Flash Kit installed (see [Installing the Flash Kit on page 5](#)), launch ControlFLASH by selecting **Start > (All) Programs > Flash Programming Tools > ControlFLASH**.
2. Choose the 20-HIM-xx v3.010 update from the list of available updates.

Important: This update may cause the HIM parameters to revert to their default values. You may want to save your configuration using the HIM CopyCat feature, DriveExplorer or DriveExecutive before upgrading.
3. Follow the screen prompts until the flash procedure completes and displays the new firmware revision (v3.010).

Restrictions

No restrictions apply to this revision of firmware.

Compatible Revisions

To use this revision of firmware, update your system tools as follows:

Update this:	To this version or later:
DriveExplorer Lite/Full	4.01
DriveExecutive	3.01
PowerFlex 7-Class Drive	all versions compatible
LCD HIM (20-HIM-xx)	all versions compatible
RSLinx Classic	2.43

Rockwell Automation Support

Rockwell Automation provides technical information on the web to assist you in using our products. At <http://support.rockwellautomation.com>, you can find technical manuals, a knowledge base of Frequently Asked Questions (FAQs), technical and application notes, sample code and links to software service packs, and a MySupport feature that you can customize to make the best use of these tools.

Rockwell Automation also provides complimentary phone support for drives, communication adapters, and peripherals. If you experience a problem with the HIM, please review the information in its User Manual. For further help in getting your HIM operational, contact a Customer Support representative:

United States	(1) 262.512.8176 Monday – Friday, 7am – 6pm CST
Outside United States	Please contact your local Rockwell Automation representative for any technical support issues.

For an additional level of technical phone support for installation, configuration and troubleshooting, we offer TechConnect Support programs. For more information, contact your local distributor or Rockwell Automation representative, or visit <http://support.rockwellautomation.com>.

Product Satisfaction Return

Rockwell Automation tests all products to ensure that they are fully operational when shipped from the manufacturing facility. However, if your product is not functioning and needs to be returned:

United States	Contact your distributor. You must provide a Customer Support case number (see phone number above to obtain one) to your distributor to complete the return process.
Outside United States	Please contact your local Rockwell Automation representative for return procedure.

U.S. Allen-Bradley Drives Technical Support - Tel: (1) 262.512.8176, Fax: (1) 262.512.2222, Email: support@drives.ra.rockwell.com, Online: www.ab.com/support/abdrives

www.rockwellautomation.com

Power, Control and Information Solutions Headquarters

Americas: Rockwell Automation, 1201 South Second Street, Milwaukee, WI 53204-2496 USA, Tel: (1) 414.382.2000, Fax: (1) 414.382.4444

Europe/Middle East/Africa: Rockwell Automation, Vorstlaan/Boulevard du Souverain 36, 1170 Brussels, Belgium, Tel: (32) 2 663 0600, Fax: (32) 2 663 0640

Asia Pacific: Rockwell Automation, Level 14, Core F, Cyberport 3, 100 Cyberport Road, Hong Kong, Tel: (852) 2887 4788, Fax: (852) 2508 1846