



Connecting a CENTERLINE[®] Motor Control Center (MCC) DeviceNet Unit to a DeviceNet MCC

Recommended Tools

Screwdriver and wire stripper

Application

Use this document to connect CENTERLINE and IntelliCENTER[™] Bulletin 2100 and 2400 MCC units to a DeviceNet MCC. Each DeviceNet MCC unit is factory wired with a communication cable that plugs into the DeviceNet component on one end and into a vertical wireway DeviceNet port on the other end.

This document provides instructions for installing DeviceNet MCC units into DeviceNet MCCs with built-in cabling in the vertical wireway. If this unit is to be installed in a Class 1 or Class 2 daisy-chained DeviceNet MCC, consult the factory.

NOTE: When using IntelliCENTER software, new units must be added to the software by installing the data disk(s) that accompanies the new unit. If an existing unit is moved, the user must update this change in the IntelliCENTER software. See Software Update at the end of this document.

Procedure

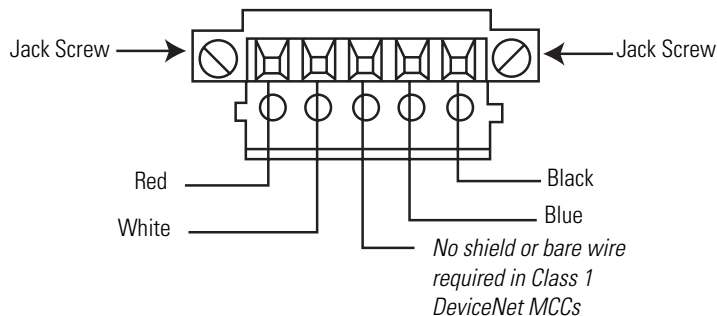
ATTENTION

Before performing any service or maintenance activities on MCC units or sections, disconnect all power sources.



The unit is supplied with a four-foot (122 cm), Class 1 DeviceNet patch cable, with a five-terminal plug attached and a separate five-terminal plug

Figure 1 Five Terminal Plug (Part # 22112-215-01.)



For a CENTERLINE MCC with a Class 1 DeviceNet cabling system:

1. Determine the proper length of patch cable by measuring from the DeviceNet device in the unit to the DeviceNet port in the vertical wireway.

NOTE: Cable should be made as short as is practical, since excessive drop lengths can lower data transmission rates. Refer to *Factory Configured DeviceNet MCCs*, publication 2100-TD004x-EN-P, and *DeviceNet Selection Guide*, publication DNET-SG001x-EN-P, for specific design parameters.

2. Cut the cable to the desired length by removing material from the end of the cable that has no connector plug. Strip the cable and attach the separate five-terminal plug connector. The wire is color coded for simplified wiring.
3. Plug one connector into the DeviceNet component in the unit. Plug the other connector into the DeviceNet port in the vertical wireway. Torque the screws on both connectors to 5 lb.-in. (0.55 Nm).
4. If there is a need to plug in more devices in a vertical wireway than available DeviceNet ports, then DeviceNet double (Catalog Number: 1485P-P1J5-UU5 or Part Number 40122-304-51) connectors are available. This allows two devices to be plugged into one port.



Software Update

After installing or relocating units in an IntelliCENTER MCC, the user must update the IntelliCENTER software by following these directions.


Adding Additional Data Disk(s)

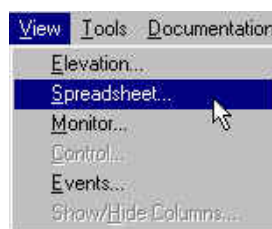
Insert the new **data disk** into the computer's CD-ROM drive. The CD contains an auto-install program that will guide the user through the installation. The user will be prompted to choose the directory into which the new data disk will be installed. The installation program will suggest the directory into which the original software was installed. It is recommended that the new data disk be installed into the same directory.

Moving to IntelliCENTER Units

Moving IntelliCENTER Units Within the same MCC Lineup

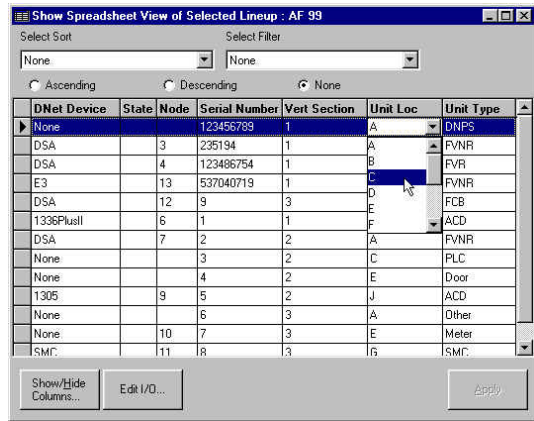
After changing the location of a unit in the IntelliCENTER (physically moving the unit in the actual MCC lineup) the new unit location must be entered into the Spreadsheet View of the IntelliCENTER software. To make the change in the IntelliCENTER software, open the Spreadsheet View by selecting Spreadsheet - from the View menu or by 'clicking' on the Spreadsheet View

icon. 



In the Spreadsheet view 'click' in the Vertical Section cell (if the Vertical Section column is not shown see Adding and Removing Columns) and change the Section Number by simply typing over the existing section number. Next, click in the Unit Location cell (if the Unit Location column is not shown see

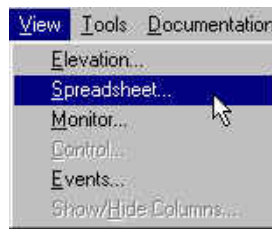
Adding and Removing Columns) and choose the new location from the drop-down list.



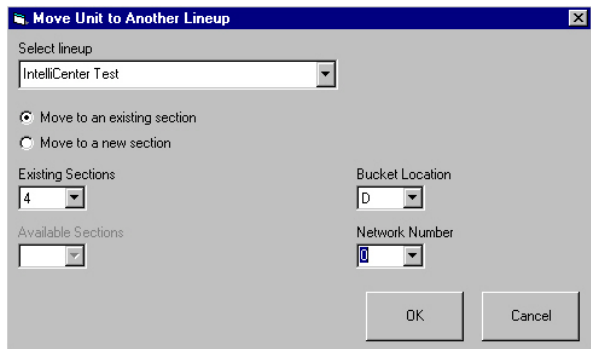
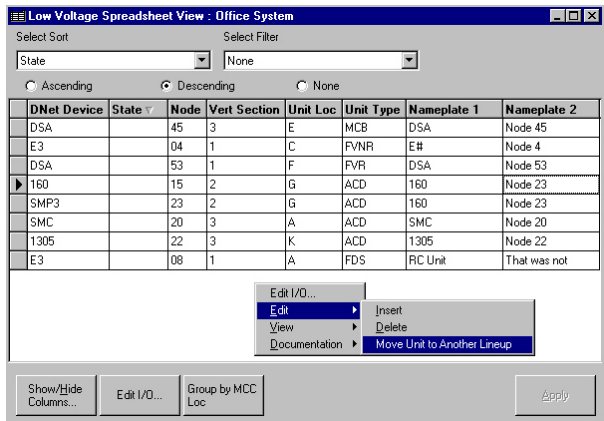
After the above selections are completed 'click' the Apply button to save the change in the software.

Moving IntelliCENTER units to a different MCC lineup

After moving an IntelliCENTER unit to a different lineup (physically moving the unit from one IntelliCENTER MCC to another) the unit location must be reflected in the IntelliCENTER software. This is done by entered into the Spreadsheet View of the IntelliCENTER in which the unit was moved from. Open the Spreadsheet View by selecting Spreadsheet - from the View menu or by 'clicking' on the Spreadsheet View icon.



In the Spreadsheet view 'right click' in the Spreadsheet View and select Move Unit to Another Lineup from the Edit menu.



Fill in the appropriate information and then 'click' the OK. In the Spreadsheet View 'click' the Apply button to save the change in the software. This change will automatically add the new information (unit) to the database (lineup) that the unit was moved to.

Reach us now at www.rockwellautomation.com

Wherever you need us, Rockwell Automation brings together leading brands in industrial automation including Allen-Bradley controls, Reliance Electric power transmission products, Dodge mechanical power transmission components, and Rockwell Software. Rockwell Automation's unique, flexible approach to helping customers achieve a competitive advantage is supported by thousands of authorized partners, distributors and system integrators around the world.

Americas Headquarters, 1201 South Second Street, Milwaukee, WI 53204, USA, Tel: (1) 414 382-2000, Fax: (1) 414 382-4444
European Headquarters SA/NV, avenue Herrmann Debroux, 46, 1160 Brussels, Belgium, Tel: (32) 2 663 06 00, Fax: (32) 2 663 06 40
Asia Pacific Headquarters, 27/F Citicorp Centre, 18 Whitfield Road, Causeway Bay, Hong Kong, Tel: (852) 2887 4788, Fax: (852) 2508 1846

Publication 2100-IN048C-EN-P—February 2003

Supersedes Publication 2100-IN048B-EN-P—May 2001

