



BULLETIN  
**150**

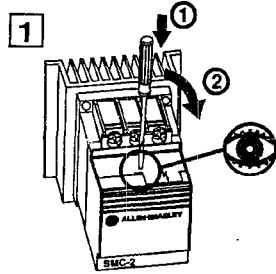
**SMC-2**

**INTERFACE MODULE**  
**MODULE D' INTERFACE**  
**SCHNITTSTELLENMODUL**  
**MODULO DE INTERFASE**  
**MODULO DI INTERFACCIA**  
インターフェイス・モジュール  
接口組件

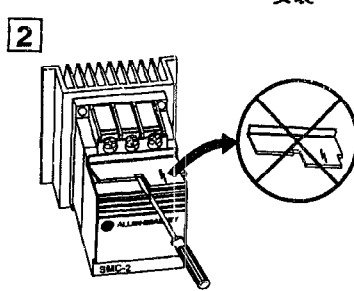
- ND  
- NA

**WARNING:** To prevent electrical shock, disconnect from power source before installing or servicing.  
**AVERTISSEMENT:** Préalablement à l'installation et aux opérations de service, couper l'alimentation secteur pour empêcher tous chocs électriques.  
**WARNUNG:** Vor Installationsoder Servicearbeiten Stromversorgung zur Vermeidung von elektrischen Unfällen trennen.  
**ADVERTENCIA:** Desconéctese de la corriente eléctrica, antes de la instalación o del servicio, a fin de impedir sacudidas eléctricas.  
**AVVERTENZA:** Togliere tensione prima dell'installazione.  
警告: 絶電を防ぐため、取り付けやサービスの際は電源をはずして下さい。  
警告: 为防止触电, 切断电源后方可进行安装或维修

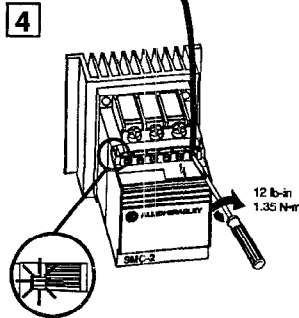
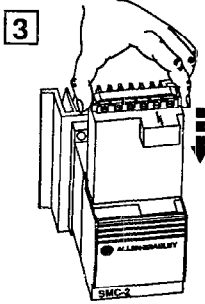
**INSTALLATION**  
**MONTAGE**



**INSTALACION**  
**INSTALLAZIONE**



取り付け  
安装



**PUSH FIRMLY INTO LOCKED POSITION**  
**POUSSER FEREMENT JUSQU'AU VERROUILLAGE DU DISPOSITIF**  
**ZU SCHLEUSEN, FESTDRÜCKEN**  
**OPRIMA FIRMEMENTE HASTA POSICIÓN DE TRANQUE**  
**INSERIRE CON FERMEZZA IN POSIZIONE BLOCCATA**  
ロックする位置まで強く押し込んで下さい。  
用力按至自锁位置

REFERENCE

REVISION  
AUTHORIZATION

1	77-90-1
2	1794-90

DIMENSIONS APPLY BEFORE  
SURFACE TREATMENT

(DIMENSIONS IN INCHES)  
TOLERANCES UNLESS  
OTHERWISE SPECIFIED

xx ±

xxx ±

ANGLES: ±

40053

INSTRUCTION SHEET FOR  
BULLETIN 150  
INTERFACE MODULE



**ALLEN-BRADLEY**  
A ROCKWELL INTERNATIONAL COMPANY

DR. *P. Dianna*  
CHKD. *M. A. Galt*  
APPD. *[Signature]*

DATE 5-7-90  
DATE 5/7/90  
DATE 5/8/96

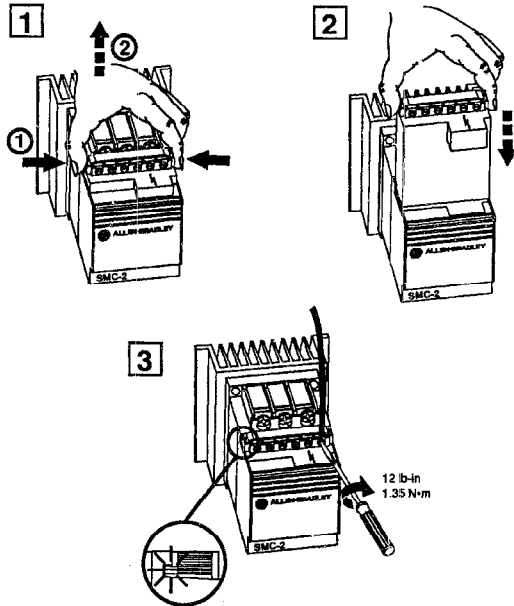
THIS DRAWING IS THE PROPERTY OF  
THE ALLEN-BRADLEY CO. INC.  
AND MAY NOT BE COPIED, USED OR  
DISCLOSED FOR ANY PURPOSE EXCEPT  
AS AUTHORIZED IN WRITING BY  
THE ALLEN-BRADLEY CO. INC.

LOCATION: MILWAUKEE, WISCONSIN U.S.A.

DWG. SHEET 1 OF 2

B 40053-270

REPLACEMENT      AUSTAUSCH      RICAMBIO      备件  
 REMPLACEMENT      REEMPLAZO      取り替え



PUSH FIRMLY INTO LOCKED POSITION  
 POUSSER FERMEMENT JUSQU'AU VERROUILLAGE DU DISPOSITIF  
 ZU SCHLEUSEN, FESTDRÜCKEN  
 OPRIMA FIRMEMENTE HASTA POSICIÓN DE TRANQUE  
 INSERIRE CON FERMEZZA IN POSIZIONE BLOCCATA  
 ロックする位置まで強く押し込んで下さい。  
 用力按至自锁位置

For Bulletin 150 SMC™ Smart Motor Controller technical support on start-up or existing installations, contact your Allen-Bradley representative. In the United States you can also call 1-800-765-SMCS (765-7627) for assistance during the hours of 8:00 am to 12:00 noon and 1:00 pm to 4:30 pm (Central Time Zone) from Monday through Friday.

40053-270-01 (B)  
 Printed in U.S.A.



-01	B	TWO SIDES PRINTED BODY STOCK WHITE INK BLACK	8-1/2" X 11"	2-3/4" X 4-1/4"	
PART NO.	CHG. LTR.	MATERIAL	FLAT	FOLDED	MAC X ORIG
			FINISHED SIZE		ALL REVISIONS MUST BE MADE BY DRAFTING SERVICES (DEPT. 87930)

DO NOT WRITE IN THIS AREA

REFERENCE		INSTRUCTION SHEET FOR BULLETIN 150 INTERFACE MODULE		THIS DRAWING IS THE PROPERTY OF THE ALLEN-BRADLEY CO. INC. AND MAY NOT BE COPIED, USED OR DISCLOSED FOR ANY PURPOSE EXCEPT AS AUTHORIZED IN WRITING BY THE ALLEN-BRADLEY CO. INC.	
REVISION AUTHORIZATION		<b>ALLEN-BRADLEY</b> A ROCKWELL INTERNATIONAL COMPANY		LOCATION: MILWAUKEE, WISCONSIN U.S.A.	
1	77-90-1			DWG SIZE SHEET 2 OF 2	
2	1794-90	DR. P. Dieman		DATE 5- -90	B 40053-270
		CHKD. M.A. Galt		DATE 5/7/90	
		APPD. [Signature]		DATE 5/8/90	
40053		DIMENSIONS APPLY BEFORE SURFACE TREATMENT (DIMENSIONS IN INCHES) TOLERANCES UNLESS OTHERWISE SPECIFIED			
		xx ±			
		xxx ±			
		ANGLES: ±			