

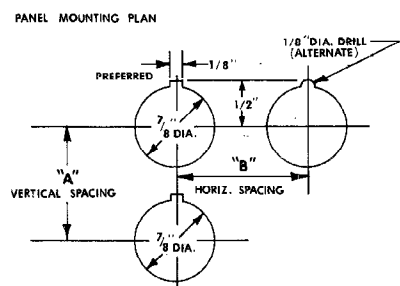
COPY A

BULLETIN 800MR POTENTIOMETER OPERATORS AND COMPLETE UNITS MOUNTING INSTRUCTIONS

COPY B

- STEP 1. REMOVE THE MOUNTING RING FROM THE BUSHING.
 - STEP 2. SELECT THE PROPER COMBINATION OF GASKETS FOR THE PANEL THICKNESS, FROM TABLE 1, AND INSTALL THEM ON THE BUSHING. **NOTE: USE ONLY THE COMBINATION OF GASKETS SPECIFIED IN TABLE 1.**
 - STEP 3. INSERT THE BUSHING THROUGH THE PANEL FROM THE REAR WITH THE SURFACE MARKED "TOP" IN LINE WITH THE ANTI-TURN NOTCH IN THE PANEL.
 - STEP 4. INSTALL THE LEGEND PLATE (OR POSITIONING RING) ON THE BUSHING IN LINE WITH THE ANTI-TURN NOTCH IN THE PANEL.
 - STEP 5. TURN THE MOUNTING RING ONTO THE BUSHING UNTIL IT STOPS IN ORDER TO COMPRESS THE GASKETS AND SECURE THE UNIT ON THE PANEL.
 - STEP 6. SLIP THE LEGEND RING OVER THE MOUNTING RING IN THE PROPER ORIENTATION GROOVES ON THE BUSHING.
 - STEP 7. SNAP THE KNOB INTO THE SHAFT IN RELATION TO THE KEYING SLOT IN THE SHAFT.
NOTE: THE KNOB CAN BE REMOVED BY PRYING IT OFF WITH A SCREWDRIVER BLADE INSERTED UNDER THE KNOB HANDLE.
- NOTE: TO REMOVE THE ENTIRE UNIT FROM THE PANEL, REVERSE STEPS 7, 6, 5, 4, AND 3.**

COPY C



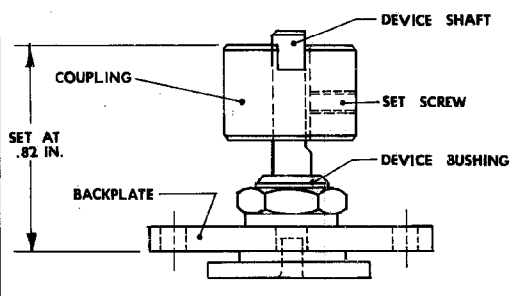
TYPE OF UNIT	A, MIN.	B, MIN.
BUL. 800MR WITH STD. LEGEND PLATE	1-1/4	1-1/4
BUL. 800MR WITH LARGE LEGEND PLATE	1-1/2	1-1/4
ALL WING LEVER SELECTOR SWITCHES	2-1/4	2-1/4

COPY D

PANEL	.067 GASKET (BLACK)	.034 GASKET (RED)
1/16	3 PLUS	2
3/32	3 PLUS	1
1/8	3 PLUS	0
5/32	2 PLUS	1
3/16	2 PLUS	0
7/32	1 PLUS	1
1/4	1 PLUS	0

FOR INTERMEDIATE PANEL THICKNESS, USE THE COMBINATION SPECIFIED FOR THE NEXT SMALLER PANEL LISTED ABOVE. PANELS THICKER THAN 1/4" MUST BE COUNTERBORED 2" MIN. DIA. TO 1/4".

COPY E

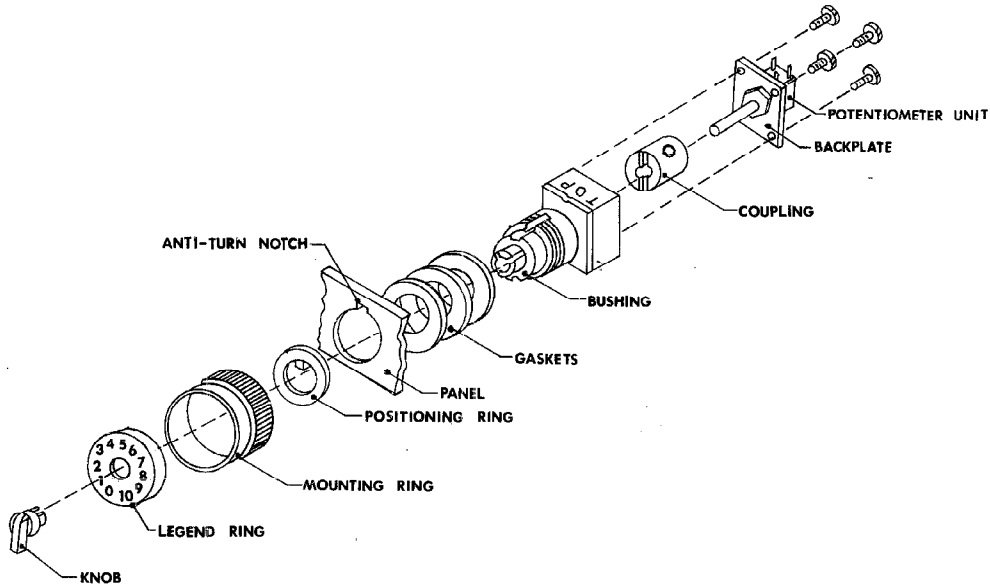


NOTE:
 FOR UNITS WHICH DO NOT INCLUDE A POTENTIOMETER, ANY SMALL ROTARY OPERATED DEVICE CAN BE INSTALLED ON THE OPERATOR IF THE FOLLOWING PARAMETERS ARE MET:
 3/8 IN. DIA. BUSHING, 1/4 TO 3/8 IN. LONG; 1/4 DIA. SHAFT, 3/4 TO 1-1/2 IN. LONG.

REFERENCES

1 REVISION RELEASE	DIMENSIONS APPLY BEFORE SURFACE TREATMENT (DIMENSIONS IN INCHES) TOLERANCES UNLESS OTHERWISE SPECIFIED	BULLETIN 800MR POTENTIOMETER OPERATORS AND COMPLETE UNITS CONTENTS FOR MOUNTING INSTRUCTIONS	WAS
1 658-74	2 PLACE DECIMAL (.XX) ±	DR. L. HECKEL	ALLEN-BRADLEY MILWAUKEE, WISCONSIN
2 1339-74	3 PLACE DECIMAL (.XXX) ±	DATE 2-15-74	SHEET 1 OF 2
REFER. BOOK 40060	ANGLES ±	CHKD. <i>R. A. Gueger</i> DATE 2-26-74	DWG. SIZE B 40060-062
		APPD. <i>T. Stamm</i> DATE 3-20-74	

COPY F



COPY G



ALLEN-BRADLEY
MILWAUKEE, WISCONSIN 53204

PRINTED IN U.S.A.
40060-062-01 (B)

GENERAL NOTES:

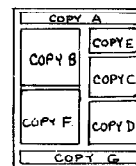
1. ALL UNDERLINED WORDS TO BE IN BOLD FACE TYPE. ELIMINATE UNDERLINING FROM PRODUCTION PRINTS.

APPROVAL SIGNATURES

COM'L LAB LIAISON MD Agard DATE 3/28/74
 PRODUCT MANAGEMENT R. W. [unclear] DATE 4/2/74
 PRODUCT ASSURANCE C. [unclear] DATE 3/21/74

REFERENCE:

COPY LAYOUT



-01	B	ONE SIDE PRINTED: BODY STOCK WHITE, BODY INK BLACK.	1 1/4"H X 5 7/8 " W
PART NO.	CHG LTR	MATERIAL	FINISHED SIZE

REFERENCES		BULLETIN 800MR		WAS	
1	REVISION	DIMENSIONS APPLY BEFORE SURFACE TREATMENT (DIMENSIONS IN INCHES) TOLERANCES UNLESS OTHERWISE SPECIFIED	POTENTIOMETER OPERATORS AND COMPLETE UNITS		
	RELEASE		CONTENTS FOR MOUNTING INSTRUCTIONS		
1	658-74		ALLEN-BRADLEY MILWAUKEE, WISCONSIN		
2	1339-74				
		2 PLACE DECIMAL (.XX)	DR. L. HECKEL	DATE 2-18-74	SHEET 2 OF 2
		3 PLACE DECIMAL (.XXX)	CHKD. <u>R. F. [unclear]</u>	DATE 2-26-74	DWG. SIZE
REFER. BOOK	40060	ANGLES ±	APPD. <u>T. Stomma</u> <u>5/21/74</u>	DATE 3-20-74	B 40060-062