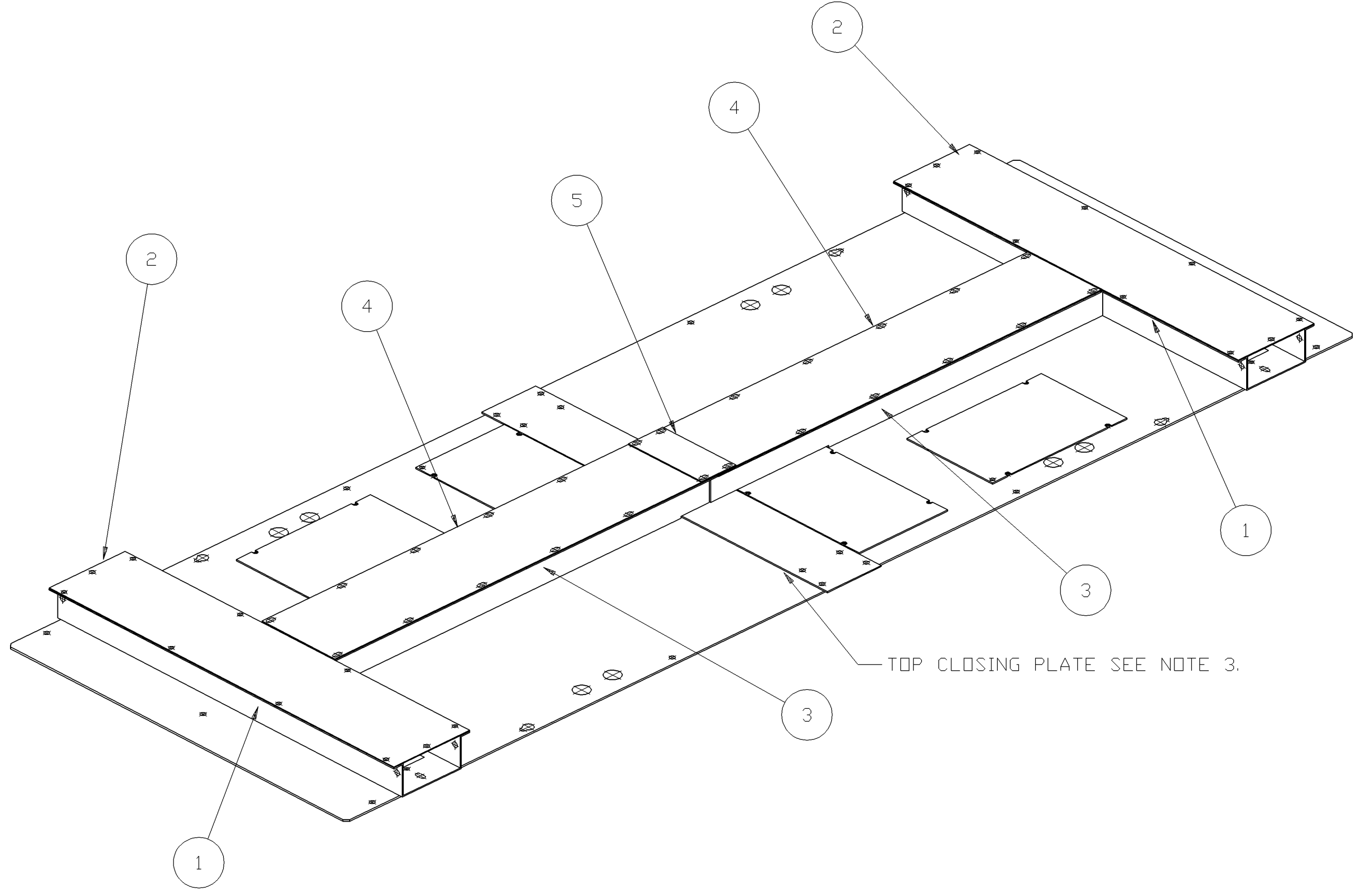


1 2 3 4 5 6 7 8

A
B
C
D
E
F
G
H



AMOUNT										PART NO.	DESCRIPTION	IT.			
-	-	-	-	-	-	-	-	-	1	1	80183-483-02	26" WIDE CABINET LV WIREDUCT	1		
									1	1	80183-483-03				
									1	1	80158-245-04	26" W. CABINET LV WIREDUCT TOP COVER	2		
									1	1	80158-245-12				
									1	1	80185-325-02	BACK TO BACK LV WIREDUCT	3		
									1	1	80185-325-03				
									1	1	80185-324-02	BACK TO BACK LV WIREDUCT TOP COVER	4		
									1	1	80185-324-03				
										1	80158-246-02	TIE PLATE	5		
										1	80158-246-05				
									24	24	24	24	M-8769	1/4-20 x .50 TAPTITE	6
									6	6	6	6	M-6191	1/4-20 x .50 R.H.M.S.	7
									6	6	6	6	M-7	1/4-20 HEX NUT	8
									6	6	6	6	M-6	1/4-20 LOCKWASHER	9

- NOTES:
- 1) ASSEMBLY, LAYOUT THE BACK TO BACK WIREDUCT ON THE TOP OF THE CABINET AND DRILL THE HOLES TO FASTEN THE WIREDUCT TO THE TOP OF THE CABINET.
 - 2) ASSEMBLY & TEST SEND THE CUSTOMER THE HARDWARE HE NEEDS TO FASTEN WIREDUCTS TOGETHER AND TO THE TOP OF CABINETS.
 - 3) TOP PLATE CLOSING PLATE IS MS8026-066.

USER ID PLUDWIG	TOLERANCES UNLESS OTHERWISE SPECIFIED (DIMENSIONS IN INCHES)	BULLETIN 1500	SIZE	TYPE EEMAC/NEMA	
	BEND RADIUS ALLOWANCE .062	ASSEMBLY BACK TO BACK LV WIREDUCT W/ GAP MEDIUM VOLTAGE 26" WIDE 1 HIGH CABINETS			
ECN NUMBER RELEASED	ANGLES ±1°	SERIES B			DR. PETER LUDWIG
	2 DECIMAL (XX) ±.03				DATE 990105
REV. NO. 1	3 DECIMAL (XXX) ±0.10	REF.			CHKD.
		A-B ORDER NO.			DATE
				SHEET 1 OF 1	DWG. NO. 80185-327