

Best-In-Class Functionality

DriveExecutive™ Software



DriveExecutive is the first application in the new Allen-Bradley DriveTools™ 2000 family of software.

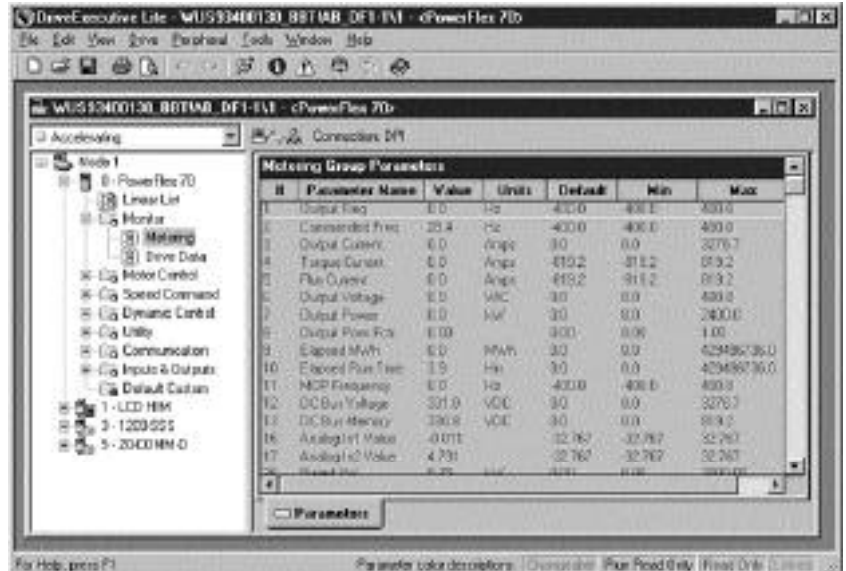
DriveExecutive software takes advantage of the best features of both DriveManager32™ and DriveExplorer™ software by implementing powerful multi-drive views, simple communication setup, and Windows™ Explorer-style navigation.

Product Highlights

- Intuitive user interface
- Support for more than 20 SCANport™ and DPI™/PowerFlex™ host products and peripherals
- View multiple online and offline drives simultaneously using DriveExecutive multiple drive windows
- In-grid and dialog-based parameter editing
- Customize the parameter display to user preferences
- Upload and download drive and peripheral configurations to preserve user data and quickly commission replacement/duplicate drives
- Automatic saving of drive database information in drive files makes it easier to share information
- Integrated HTML Help™ architecture

Diagnostics and Communications

- Immediate visual indication of drive and communication status when viewing online drives
- A dropdown box provides complete drive status at a glance
- Easy access to drive fault and alarm information
- Integrated communication using RSLinx™ and RSWho™ – No separate DriveTools communication setup and No KT Port Mapping!



Windows™ 98 / Windows ME Windows NT™ / Windows 2000

To install DriveExecutive software, you will need a Pentium 100MHz processor with at least 32 MB of RAM, 90 MB of available hard drive space (more hard disk space may be required for specific application features), a 16-color, SVGA display with 800 by 600 or greater resolution, and a mouse or other Windows-compatible pointing device. This version will not run on Alpha, MIPS, or Power PC® processors.

Microsoft® Internet Explorer™ version 4.0 or later must be installed on your PC prior to installing DriveExecutive. DriveExecutive is only supported on the following environments: Windows 98, Windows ME (Millennium Edition), Windows NT Version 4.0 (Service Pack 3 or later recommended), and Windows 2000.



Bringing Together Leading Brands in Industrial Automation

Network Connectivity

	DPI compatible device (1)	PowerFlex 700S / DriveLogix drive (2)	ControlLogix™ drive modules	SCANport compatible device (3)	1336 FORCE drive (5)	160 SSS	User PC
ControlLogix Gateways (Ethernet, ControlNet, DeviceNet, DataHighway Plus™)	Equipment depends on network to which the device is connected					N/A	Equipment depends on network to which the device is connected
ControlNet Direct	N/A	1788-CNC, 1788-CNCR, 1788-CNF, or 1788-CNFR and appropriate cables	N/A	1203-CN1 (Ver 1.002 or later) and appropriate 1202 cable	ControlNet Adapter Board (1336T-GT3EN), Repeater Adapter (1786-RPA), and Fiber Module (1786-RPFM)	N/A	1784-KTC, -KTCX, -PCC, or -PCIC
Ethernet to ControlNet Direct	N/A		N/A			N/A	Client: Ethernet running TCP/IP; Server: Ethernet running TCP/IP and 1784-KTC, -KTCX, -PCC, or -PCTX
RS-232 to ControlNet Direct	N/A		N/A			N/A	RS-232 serial port and 1770-KFC
DeviceNet Direct	20-COMM-D adapter		N/A	1203-GK5, 1203-GU6, 1336-GM5 (Ver 2.001 or later), or 1336-GM6 (Ver 2.001 or later) and appropriate cables	N/A	N/A	1784-PCD, -PCIDS, or -PCID
RS-232 to DeviceNet Direct			N/A		N/A	RS-232 serial port and 1770-KFD	
RS-232 Serial Point-to-Point	1203-SSS (Ver 3.xx or later) and appropriate cables		N/A	1203-SSS, 1203-GD2, or 1336-GM2 and appropriate cables	160-RS1 adapter and appropriate cable	N/A	RS-232 serial port
Ethernet to RS-232 Serial Point-to-Point (RSLinx Gateway)						N/A	Client: Ethernet running TCP/IP; Server: Ethernet running TCP/IP and RS-232 serial port
Modem (4)	1203-SSS (Ver 3.xx or later) adapter; 1203-RAD, 1203-RAD1 modem kit; and appropriate cables		N/A	1203-SSS, 1203-GD2, or 1336-GM2 adapter; 1203-RAD, 1203-RAD1, modem kit; and appropriate cable	N/A	N/A	1203-RAD, 1203-RAD1 modem kit and RS-232 serial port
DataHighway Plus™ Direct	N/A			PLC Communications Adapter (1336T-GT1EN)	N/A	N/A	1784-KT, -KTX, -KTXD, or -PCMK
RS-232 to DataHighway Plus™ Direct							RS-232 Sc
Ethernet to DataHighway Plus™ Direct (RSLinx Gateway)							Client: Ethernet running TCP/IP; Server: Ethernet running TCP/IP and 1784-KT, -KTX, -KTXD, or -PCMK

- (1) DPI compatible devices: PowerFlex 70, PowerFlex 700, PowerFlex 700S, PowerFlex 700S/DriveLogix, PowerFlex 7000. The PowerFlex 700S/DriveLogix is a DPI compatible device, however, additional NetLink connection options are available. Therefore, both "DPI compatible device" and "PowerFlex 700S/DriveLogix" columns apply to the PowerFlex 700S/DriveLogix.
- (2) Options in the "PowerFlex 700S/DriveLogix" column only apply to PowerFlex 700S drives that have the DriveLogix controller installed.
- (3) SCANport compatible devices: 1305, 1336 PLUS, 1336 PLUS II, 1336 SPIDER, 1336 IMPACT™, 1336 FORCE™, 1336 REGEN, 1397, 1557, 2364F RGU, SMC™, and SMP™. The 1336 FORCE is a SCANport compatible device, however, additional connection options are available. Therefore, both "SCANport compatible device" and "1336 FORCE" columns apply to the 1336 FORCE drive.
- (4) A total of two supported modems are required, one at the drive and one at the PC. The 1203-RAD kit contains two modems; the 1203-RAD1 kit contains one modem.
- (5) 1336 FORCE drives with firmware version 2.xx or later are supported.

ControlLogix, DriveExecutive, DriveTools, DriveManager32, DriveExplorer, SCANport, DPI, PowerFlex, 1336 IMPACT, 1336 FORCE, SMP, SMC, and DataHighway Plus are trademarks of Rockwell Automation. RSLinx and RSWho are trademarks of Rockwell Software. ControlNet is a trademark of ControlNet International, Ltd. DeviceNet is a trademark of the Open DeviceNet Vendor Association. Internet Explorer, HTML Help, Windows, Windows NT, and Microsoft are trademarks of Microsoft Corporation. Power PC is a registered trademark of IBM.

www.rockwellautomation.com

Corporate Headquarters

Rockwell Automation, 777 East Wisconsin Avenue, Suite 1400, Milwaukee, WI, 53202-5302 USA, Tel: (1) 414.212.5200, Fax: (1) 414.212.5201

Headquarters for Allen-Bradley Products, Rockwell Software Products and Global Manufacturing Solutions

Americas: Rockwell Automation, 1201 South Second Street, Milwaukee, WI 53204-2496 USA, Tel: (1) 414.382.2000, Fax: (1) 414.382.4444
 Europe: Rockwell Automation SA/NV, Vorstlaan/Boulevard du Souverain 36-BP 3A/B, 1170 Brussels, Belgium, Tel: (32) 2 663 0600, Fax: (32) 2 663 0640
 Asia Pacific: Rockwell Automation, 27/F Citicorp Centre, 18 Whitfield Road, Causeway Bay, Hong Kong, Tel: (852) 2987 4788, Fax: (852) 2508 1846

Headquarters for Dodge and Reliance Electric Products

Americas: Rockwell Automation, 6040 Ponders Court, Greenville, SC 29615-4617 USA, Tel: (1) 864.297.4800, Fax: (1) 864.281.2433
 Europe: Rockwell Automation, Brühlstraße 22, D-74834 Elztal-Dallau, Germany, Tel: (49) 6261 9410, Fax: (49) 6261 1774
 Asia Pacific: Rockwell Automation, 55 Newton Road, #11-01/02 Revenue House, Singapore 307987, Tel: (65) 351 6723, Fax: (65) 355 1733