

Easy to Use and Low Cost

DriveExplorer™ Version 3.01 Software



DriveExplorer software is Allen-Bradley's entry-level package providing basic functionality for programming and maintaining Allen-Bradley drives.

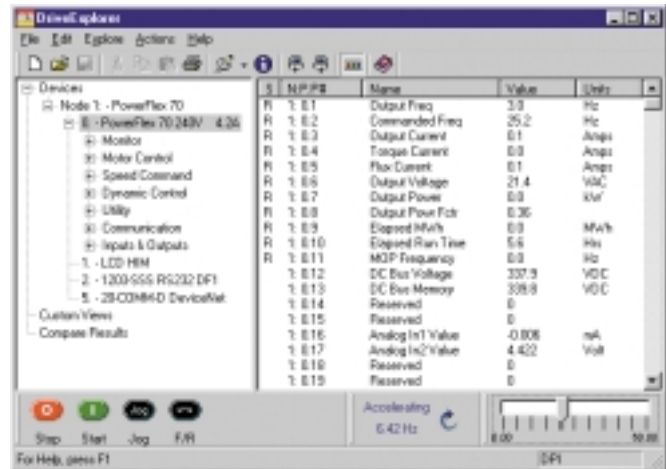
DriveExplorer features Windows® Explorer-style navigation to make drive setup easy and faster than using a HIM.

Product Highlights

- Intuitive user interface
- Online editor with dialog-based parameter editing and product help support
- Upload and save information for later downloads
- Support for most Allen-Bradley drive products and peripherals
- Upload and download drive and peripheral configurations to preserve user data and quickly commission replacement / duplicate drives
- Control Bar tools for starting and stopping drives from your PC
- Integrated HTML Help™ architecture
- Print online or use the Print to a Text File feature to print offline later

Diagnostics and Communications

- Parameter comparisons to a file or to device defaults
- Access to product and communication adapter fault, alarm, and event information
- Drag-and-drop custom views allow the user to view parameters from multiple online devices simultaneously
- Access to diagnostic item information when supported by the product or communication adapter
- Serial point-to-point and serial to DeviceNet™ and ControlNet™ connectivity



Windows® 95 / Windows 98 Windows ME / Windows XP Windows NT® / Windows 2000

To install DriveExplorer software, you will need a 486 66MHz processor or better with at least 16 MB of RAM, 2 MB of available hard drive space (more hard disk space may be required for product help), a VGA display, CD-ROM drive (for installation only), and a mouse or other Windows-compatible pointing device.

Microsoft® Internet Explorer® version 5.0 or later must be installed on your PC. DriveExplorer is only supported on the following environments: Windows 95, Windows 98, Windows ME (Millennium Edition), Windows NT Version 4.0 (Service Pack 3 or later recommended), Windows 2000, and Windows XP.

Allen-Bradley RAC 6182 Industrial Computer

RAC 6182 Industrial Computer running Windows CE 3.0: Requires 1600 KB of available memory, 700KB of storage memory, serial communications port, and a mouse or other Windows pointing device. A keyboard interface is desirable, but optional.



Bringing Together Leading Brands in Industrial Automation

Windows CE (SH3 or SH4 Processor)

Handheld PC (H/PC) Pro, using SH3 or SH4 processor with at least 12 MB of RAM, 700 KB program, and 700 KB storage memory, running Windows CE 2.11 operating system. Also requires H/PC cable.

Windows CE (StrongARM Processor)

Handheld PC (H/PC) Pro, using StrongARM processor with at least 16 MB of RAM, 700 KB program, and 700 KB storage memory, running Windows CE 2.11 or 3.0 operating system. Also requires H/PC cable.

Connectivity

	Point-to-point connection (1)	Serial to DeviceNet (1) (2)	Serial to ControlNet (1), (3)
DSI™	PowerFlex 4	*22-SCM-232 serial adapter (includes required cables)	N/A
160 SSC™	160 SSC™	*160-RS1 serial adapter *RS-232 serial cable	N/A
DPI™ (4)	PowerFlex 70 PowerFlex 700 PowerFlex 700S	*1203-SSS (Series B) serial adapter (includes required cables)	*20-COMM-D DeviceNet adapter per product *DeviceNet cables and accessories
SCANport	1305 AC Drive 1336 FORCE™ Drive 1336 IMPACT™ Drive 1336 PLUS Drive 1336 PLUS II Drive 1397 DC Drive 1557 Medium Voltage Drive 2364 Regenerative Bus Supply 1336 REGEN SMC Dialog Plus™ SMP-3™ Overload Relay	*1203-SSS (Series B) serial adapter (includes required cables) *1203-SSS (Series A) serial adapter (includes required cables) *1203-GD2/GK2 with RS-232 cable and Bulletin 1202 Communication Cable (5) *1336-GM2 with RS-232 cable	*20-COMM-C ControlNet adapter per product *ControlNet cables and accessories *Each product must use one of the following: 1203-GU6, 1336-GM6, 1203-GK5, or 1203-GM5 *DeviceNet cables and accessories *Each product must use a 1203-CN1 adapter *ControlNet cables and accessories

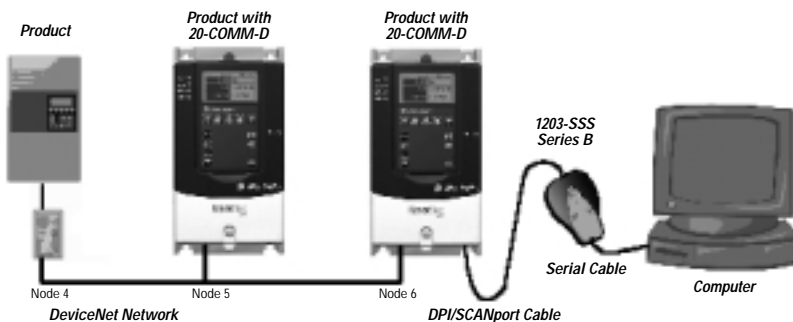
(1) If you are using an H/PC, you will also need to use your H/PC serial cable and a null cable converter (1203-SNM).

(2) Because DriveExplorer is a serial tool, a serial connection to the DeviceNet network is required. Two options are available: 1 - Connect DriveExplorer to the serial port on the 1203-GU6 using a 1203-SFC cable; or 2 - Connect DriveExplorer to a DPI product with an installed 20-COMM-D adapter using a 1203-SSS (Series B) adapter.

(3) Because DriveExplorer is a serial tool, a serial connection to the ControlNet network is required. Two options are available: 1 - Connect DriveExplorer to the serial port on the 1203-CN1 using a 1203-SFC cable; or 2 - Connect DriveExplorer to a DPI product with an installed 20-COMM-C adapter using a 1203-SSS (Series B) adapter.

(4) Some products that support a DPI interface also support a SCANport interface, refer to product documentation for details.

(5) Bulletin 1202 communication cables: 1202-C03 (1/3 m), 1202-C10 (1 m), 1202-C30 (3 m), and 1202-C90 (9 m). Only one cable is needed.



Additional Information

For additional information or to download DriveExplorer Lite freeware, visit www.ab.com/drives/drivexplorer.htm.

DriveExplorer, SCANport, DPI, DSI, PowerFlex, 1336 IMPACT, 1336 FORCE, SSC, SMP, DSI, DPI, and SMC are trademarks of Rockwell Automation.

ControlNet is a trademark of ControlNet International, Ltd.

DeviceNet is a trademark of the Open DeviceNet Vendor Association.

Internet Explorer, HTML Help, Windows, Windows NT, and Microsoft are registered trademarks of Microsoft Corporation.

www.rockwellautomation.com

Corporate Headquarters

Rockwell Automation, 777 East Wisconsin Avenue, Suite 1400, Milwaukee, WI, 53202-5302 USA, Tel: (1) 414.212.5200, Fax: (1) 414.212.5201

Headquarters for Allen-Bradley Products, Rockwell Software Products and Global Manufacturing Solutions

Americas: Rockwell Automation, 1201 South Second Street, Milwaukee, WI 53204-2496 USA, Tel: (1) 414.382.2000, Fax: (1) 414.382.4444

Europe: Rockwell Automation SA/NV, Vorstlaan/Boulevard du Souverain 36-BP 3A/B, 1170 Brussels, Belgium, Tel: (32) 2 663 0600, Fax: (32) 2 663 0640

Asia Pacific: Rockwell Automation, 27/F Citicorp Centre, 18 Whitfield Road, Causeway Bay, Hong Kong, Tel: (852) 2887 4788, Fax: (852) 2508 1846

Headquarters for Dodge and Reliance Electric Products

Americas: Rockwell Automation, 6040 Ponders Court, Greenville, SC 29615-4617 USA, Tel: (1) 864.297.4800, Fax: (1) 864.281.2433

Europe: Rockwell Automation, Brühlstraße 22, D-74834 Elztal-Dallau, Germany, Tel: (49) 6261 9410, Fax: (49) 6261 1774

Asia Pacific: Rockwell Automation, 55 Newton Road, #11-01/02 Revenue House, Singapore 307987, Tel: (65) 351 6723, Fax: (65) 355 1733