

**CROSS REFERENCE TO
ROCKWELL PART
NUMBER 22171-963-01**



Interactive product catalog

Dual Rated aluminum Terminals

YA39AM2

Type YA-A aluminum tin plated compression HYLUG terminals are dual rated and designed for use on both aluminum and copper conductors from #12 solid through 2000 kcmil. They are designed for heavy duty applications to 35KV. YA-A terminals are prefilled with PENETROX, and assembled with color-coded end caps. Available with one, two, and four hole NEMA tongues, the aluminum HYLUG terminals are designed for a permanent trouble free electrical termination.



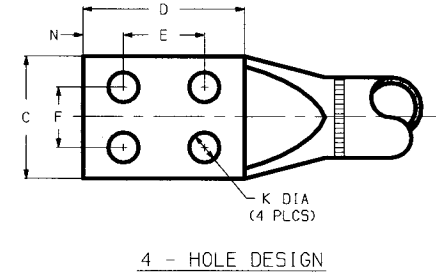
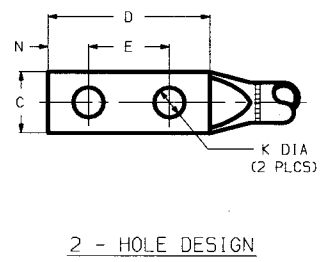
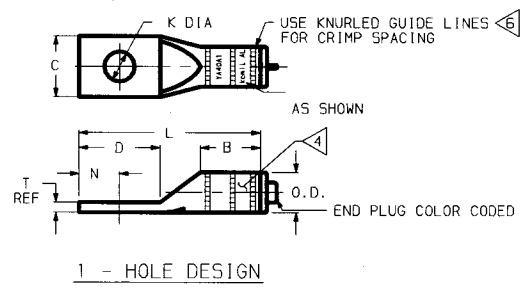
		Features Selected
Wire Size		700 kcmil 750 kcmil
Stud Hole Size		1/2 in.
Stud Hole Spacing		1-3/4 in.
Tongue Width		1.69 in.
		Other Properties
Wire Strip Length	2-7/8 in.	
Element A Index	301	
UL Listed	yes	
CSA Certified	yes	



CATALOG NO.	CONDUCTOR COPPER OR ALUMINUM CONDUCTOR SIZE	NO. OF STRANDS	CONNECTOR DIMENSIONS - LINEAR MEASURE: IN. (mm)										O.D.	T REF.	INFORMATION			CONDUCTOR TYPE	APPROVALS FOR TIN PLATED CONNECTORS
			STUD SIZE	NO. OF HOLES	B	C	D	E	F	K DIA.	L	N			PLATING	COLOR CODE	DIE INDEX #		
YA36A1	600 kcmil .893 ø	61	5/8	1	2.47 [63]	1.97 [50]	1.88 [48]	-	-	.69 [18]	5.82 [148]	.88 [22]	1.44 [37]	.52 [13]	TIN	BLACK	473		
YA36A2			1/2	2	2.47 [63]	1.62 [41]	3.15 [80]	1.75 [44]	-	.56 [14]	7.09 [180]	.63 [16]		.52 [13]	NONE				
YA36A3			3/8	2	2.47 [63]	1.97 [50]	1.89 [48]	1.00 [25]	-	.44 [11]	5.83 [148]	.44 [11]		.52 [13]	NONE				
YA36A4			1/2	1	2.47 [63]	1.97 [50]	1.69 [43]	-	-	.56 [14]	5.64 [143]	.69 [18]		.52 [13]	NONE				
YA36A5			1/2	1	2.46 [62]	2.05 [52]	1.34 [34]	-	-	.56 [14]	5.26 [134]	.63 [16]		.43 [11]	TIN				
YA39A1	700 kcmil .964 ø	61	5/8	1	2.46 [62]	2.05 [52]	1.88 [48]	-	-	.69 [18]	5.80 [147]	.88 [22]	1.46 [37]	.43 [11]	TIN	YELLOW	936		
YA39A2			1/2	1	2.46 [62]	2.05 [52]	1.89 [48]	1.00 [25]	-	.44 [11]	5.81 [148]	.44 [11]		.43 [11]	NONE				
YA39A3			3/8	2	2.46 [62]	2.05 [52]	1.89 [48]	1.00 [25]	-	.44 [11]	5.81 [148]	.44 [11]		.43 [11]	NONE				
YA39A4			1/2	1	2.56 [65]	2.19 [56]	1.85 [47]	-	-	.69 [18]	6.04 [153]	.88 [22]		.57 [14]	TIN				
YA39A5			1/2	2	2.46 [62]	1.62 [41]	3.15 [80]	1.75 [44]	-	.56 [14]	7.07 [180]	.63 [16]		.43 [11]	TIN				
YA39A6	750 kcmil .998 ø	61	3/8	2	2.46 [62]	2.05 [52]	1.89 [48]	1.00 [25]	-	.44 [11]	5.81 [148]	.44 [11]	1.46 [37]	.43 [11]	TIN	YELLOW	936	AL9CUHV	
YA39A7			1/2	2	2.46 [62]	1.62 [41]	6.33 [161]	1.75 [44]	-	.56 [14]	10.25 [260]	.63 [16]		.43 [11]	NONE				
YA39A12	800 kcmil 1.030 ø	61	1/2	2	2.56 [65]	1.69 [43]	3.12 [79]	1.75 [44]	-	.56 [14]	7.31 [186]	.63 [16]	1.60 [41]	.57 [14]	TIN	RED	301	UL AND CSA	
YA39AM2			1/2	2	2.56 [65]	1.69 [43]	3.12 [79]	1.75 [44]	-	.56 [14]	7.31 [186]	.63 [16]		.57 [14]	NONE				
YA40A1	800 kcmil 1.030 ø	61	5/8	1	2.56 [65]	1.65 [42]	1.87 [47]	-	-	.69 [18]	6.12 [155]	.88 [22]	1.65 [42]	.60 [15]	TIN	GRAY	474		
YA40A2			1/2	2	2.56 [65]	2.25 [57]	3.16 [80]	1.75 [44]	-	.56 [14]	7.41 [188]	.63 [16]		.60 [15]	NONE				
YA40A3			5/8	1	2.74 [70]	2.50 [64]	1.89 [48]	-	-	.69 [18]	6.50 [165]	.88 [22]		.66 [17]	TIN				
YA40A4			1/2	2	2.74 [70]	1.65 [42]	3.15 [80]	1.75 [44]	-	.56 [14]	7.76 [197]	.63 [16]		.66 [17]	NONE				
YA44A1	1000 kcmil 1.152 ø	61	5/8	1	2.74 [70]	3.03 [77]	3.15 [80]	1.75 [44]	1.75 [44]	.56 [14]	7.76 [197]	.63 [16]	1.84 [47]	.53 [13]	TIN	BROWN	302		
YA44A2			1/2	2	2.74 [70]	1.65 [42]	3.15 [80]	1.75 [44]	-	.56 [14]	7.76 [197]	.63 [16]		.66 [17]	NONE				
YA44A3			1/2	4	2.74 [70]	3.03 [77]	3.15 [80]	1.75 [44]	1.75 [44]	.56 [14]	7.76 [197]	.63 [16]		.53 [13]	NONE				
YA44A4			1/2	4	2.74 [70]	3.03 [77]	3.15 [80]	1.75 [44]	1.75 [44]	.56 [14]	7.76 [197]	.63 [16]		.53 [13]	NONE				

D
C

D
C



NOTES:

- ALL HYLUGS ACCOMMODATE U.S. STANDARD WASHERS
- REMOVE ALL EXCESS PENETROX® FROM CONNECTOR AND ADJACENT CONDUCTOR PRIOR TO TAPING.
- APPROVALS APPLY TO TIN PLATED CONNECTORS ONLY.
- CONNECTOR BARRELS PREFILLED WITH PENETROX®.
- THE SAME SIZE COMPACT CONDUCTOR AS THE CONCENTRIC CAN BE ACCOMMODATED IN ADDITION TO THE ACCOMMODATIONS MARKED ON THE CONNECTOR.
- NUMBER OF CRIMPS ARE LISTED FOR EACH SIZE AND DIE COMBINATION ON STUFFER SHEET THAT IS PACKED WITH EACH BOX OF CONNECTORS.
- DIMENSIONS IN BRACKETS [] ARE IN MILLIMETERS ROUNDED OFF TO THE NEAREST MILLIMETER, UNLESS OTHERWISE NOTED, AND ARE FOR REFERENCE ONLY.
- CAN BE MOUNTED SIDE BY SIDE ON FOUR HOLE NEMA PAD.
- USE ONLY WHEN CUSTOMER REQUIRES 1.600 O.D. VARIATION FOR COMPATABILITY WITH OLD INSTALLATION TOOLING. FOR ALL OTHER APPLICATIONS USE C39-1 TUBING (1.460 O.D.).
- THE YA39A12 IS NOT UL LISTED OR CSA CERTIFIED.

UNINSULATED COMPRESSION TERMINAL MATERIAL : ALUMINUM TUBE

HYLUG™

CAT NO. YA A (TABLE)	SCALE NTS
DRAWN: E.S.K. 7-21-72	CHECKED: S.F.P. 8-1-72
DSGN APPVL: R.B. 8-2-72	MFG APPVL: N/A
G.A. APPVL: DAVE VARIO 6/19/95	MKTG APPVL: P WERTHMAN 6/16/95
ICAD FILE: SD73935-05_28	PH REF: N/A
FRAMATONE CONNECTORS USA INC. BUNDRY ELECTRICAL MANCHESTER, NH 03108 U.S.A. 1-800-346-4175	MOL REF: N/A PROJECT: DRAWING NO. SD73935 SHEET 5 OF 7

28	11/29/99	ADDED CATALOG # YA36A8 TO TABLE PER ECO 5325.	DB	PL
27	10/9/98	ADDED CATALOG # YA39A12 TO TABLE PER ECO 4513	PL	KH
26	10/5/95	REF PCN 2430, ADDED TRNG. & G.A. APP. SIGNATURES REGRANN TO CAD & ADDED METRIC	D.D.	J.M.
REV.	DATE	DESCRIPTION	BY	C'K'D.