

# CROSS REFERENCE ROCKWELL PART# 306647

PART #	306647	
MOD	Q50005	
KVA	50	
PHASE	3	60 HZ
TEMP RISE	115 °C	
CLASS	MP2-B 220	
ENCLOS.	C&C	425 LBS

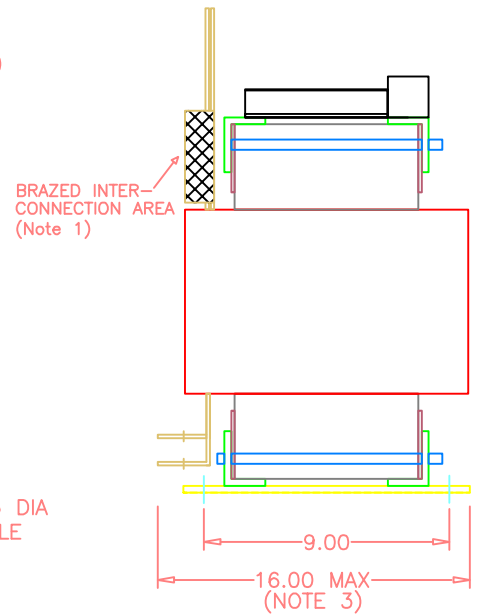
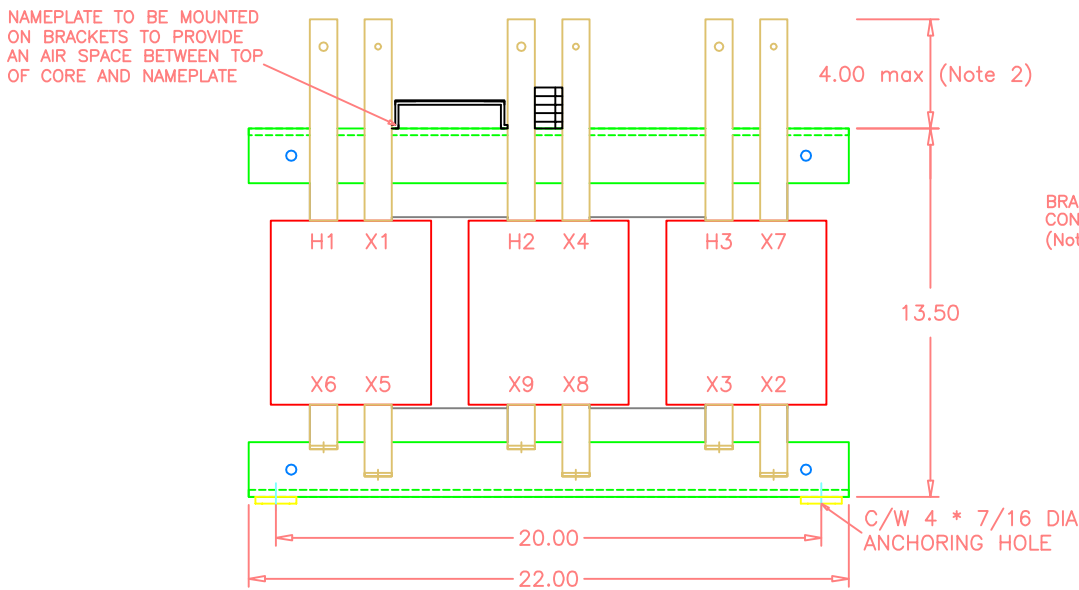
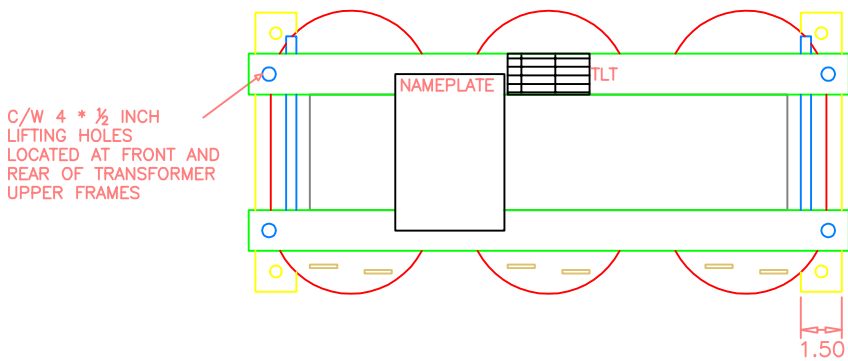
PRIMARY	
VOLTAGE	CONNECTORS
480	1.0 x 1/8 COPPER BAR
H1-H2-H3	5/16 HOLE

SECONDARY	
VOLTAGE	CONNECTORS
428	1.0 x 1/8 COPPER BAR
X1 TO X9	7/32 HOLE

Load losses :	115	WATTS
No Load losses :	410	WATTS
Total losses :	525	WATTS

REV	DATE	BY	DETAIL
0	2009-08-12	C.D.	MOD # CHANGE

\* AUTOTRANSFORMER C/W 3 N/C 200°C THERMAL SENSORS WIRED IN SERIES



NOTE 1 : INTERCONNECTION AREA ### WILL NOT EXCEED 2" ABOVE TRANSFORMER TOP FRAME.  
 NOTE 2 : TERMINATIONS WILL EXCEED CORE DIMENSIONS BY A MAXIMUM OF 4 INCHES. WILL VARY BASED ON KVA RATING  
 NOTE 3 : OVERALL DIMENSION

THIS PAPER IS OUR PROPERTY. IS CONFIDENTIAL. IS PROVIDED ONLY FOR REFERENCE IN DEALING WITH US. MAY NOT BE KEPT AND IS TO BE RETURNED ON REQUEST WITH ALL OTHER PROPERTY DELIVERED IN CONNECTION THEREWITH. YOU WILL NOT PERMIT THE USE OF THIS PAPER OR SUCH PROPERTY EXCEPT FOR DEALING WITH US. WE ARE RESPONSIBLE FOR THE CONTENTS OF THIS PAPER ONLY IF OUR AUTHORIZED REPRESENTATIVE SO CERTIFIES ON ITS FACE. BY ACCEPTING THIS PAPER YOU AGREE TO THE ABOVE.	PROJ	DR. C.D.		TITLE :  50 KVA 18 PULSE AUTOTRANSFORMER PART No : 306647
	ENG	DATE 2009-08-12		
	MFG. ENG.	CK.		
	DATE	DATE		
	APPD. BY	APP'D		
DATE	DATE	DWG. NO.	Q50005 REV0.DWG	SH. 1 OF 1
LOCATION	REFERENCE DWG.	INDEX NO.	INDEX NO.	