



Hammond Power Solutions Inc.

TITLE: 1PH DISTRIBUTION TRANSFORMER
NAMEPLATE INFORMATION

1	10/07/14	SC	TERMINAL DIMENSIONS ADDED	DES: MCHRIST
				DATE: 05/05/04
NO.	DATE	BY	REVISION	SCALE: NTS

SHEET 1 OF 2

EDB 172287

1.0 schhibb 2010/07/14 14:58

SINGLE PHASE DRY TYPE TRANSFORMER
ALLEN-BRADLEY
MILWAUKEE, WI. USA



LR3902



E112313

P/N

40022-50-06

KVA 25

CLASS AN

TYPE G

TEMP. RISE °C 80

TEMP. CLASS °C 220

FREQ. Hz 60

IMPEDANCE % @ 100 °C 2.5

ENCL. TYPE -

WEIGHT LBS 250

INS. SYSTEM 180-1

SERIAL NO:

cab1001e

VOLTS	% RATED VOLTAGE	CONNECTION
630	105	1-2
615	102.5	2-3
600	100	3-4
585	97.5	4-5
570	95	5-6
550	92.5	6-7
540	90	7-8

172287

HV

600

V

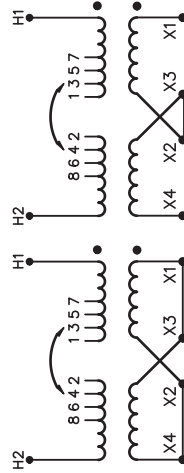
BILL kV

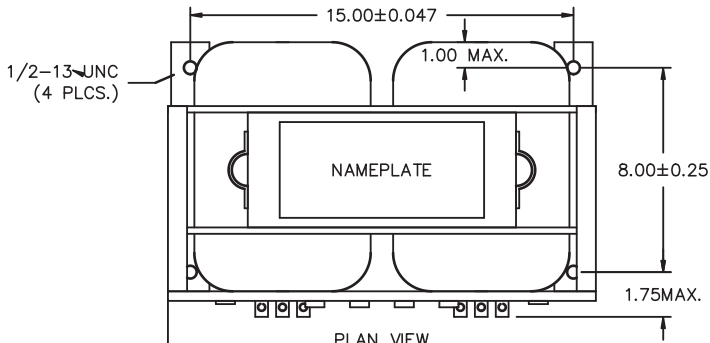
H2 H1

LV

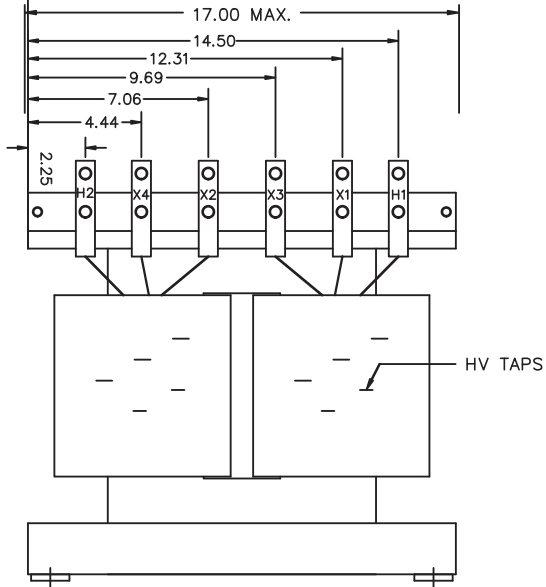
120/240

X4 X2 X3 X1

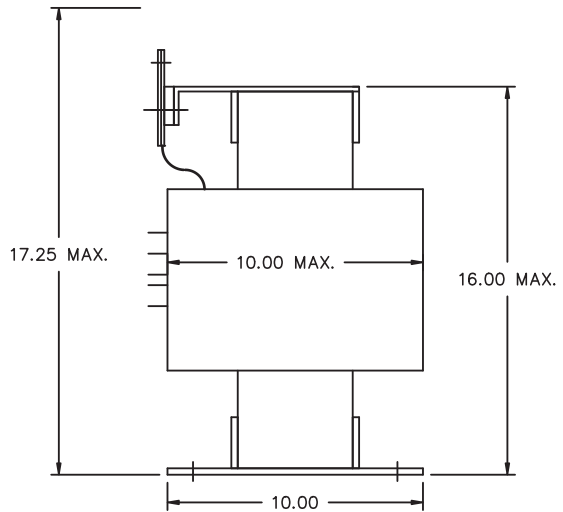




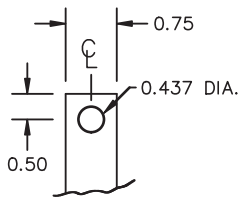
PLAN VIEW



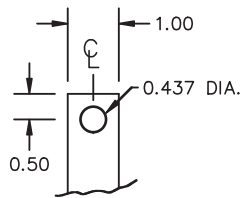
FRONT VIEW



SIDE VIEW



MATERIAL: 1/8" THICK CU.
TIN PLATED
HV TERMINAL DETAIL



MATERIAL: 1/4" THICK CU.
TIN PLATED
LV TERMINAL DETAIL

NOTES : ADHESIVE TERMINAL LABELS LOCATED ON TERMINAL SUPPORT BOARD.
EXTRA HOLES ON BASE PLATE FOR MOUNTING TO SHIPPING SKID.



TITLE: 1PH DISTRIBUTION TRANSFORMER
MECHANICAL INFORMATION

1	10/07/14	SC	TERMINAL DIMENSIONS ADDED	DES: MCHRIST
				DATE: 05/05/04
NO.	DATE	BY	REVISION	SCALE: NTS

SHEET 2 OF 2

EDB 172287

1.0 schhibb 2010/07/14 14:58