



Hammond Power Solutions Inc.

TITLE: 1PH DISTRIBUTION TRANSFORMER
NAMEPLATE INFORMATION

| | | | | |
|-----|------|----|----------|----------------|
| NO. | DATE | BY | REVISION | DES: GPATEL |
| | | | | DATE: 09/01/19 |
| | | | | SCALE: NTS |

SHEET 1 OF 2

EDB 190734

0.0 jwen 2009/08/12 20:55

SINGLE PHASE DRY TYPE TRANSFORMER
ALLEN-BRADLEY
MILWAUKEE, WI. USA



LR3902



E112313

P/N 40022-051-02

kVA 37.5

CLASS AN

TYPE G

TEMP. RISE °C 80

TEMP. CLASS °C 180

FREQ. Hz 60

IMPEDANCE % @ 100 °C 3

ENCL. TYPE -

WEIGHT LBS 335

INS. SYSTEM 180-1

SERIAL NO:

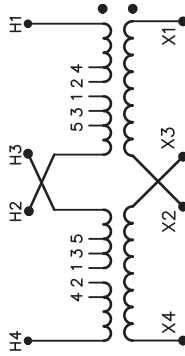
| LOW VOLTAGE CONNECTION (LINES ON X1 AND X4) | | |
|--|---------|---------|
| VOLTS | CONNECT | CONNECT |
| 240 | X2-X3 | X1-X3 |
| 120 | X2-X4 | X1-X4 |

| HIGH VOLTAGE CONNECTION (LINES ON H1 AND H4) | | | | |
|--|-------------|--------------|------------------|---------|
| VOLTS | LEFT JUMPER | RIGHT JUMPER | LEG PERCENT TAPS | CONNECT |
| 504 | 1-2 | 1-2 | 105 | H2-H3 |
| 492 | 2-3 | 1-2 | 102.5 | H2-H3 |
| 480 | 2-3 | 2-3 | 100 | H2-H3 |
| 468 | 3-4 | 2-3 | 97.5 | H2-H3 |
| 456 | 3-4 | 3-4 | 95 | H2-H3 |
| 444 | 4-5 | 3-4 | 92.5 | H2-H3 |
| 432 | 4-5 | 4-5 | 90 | H2-H3 |

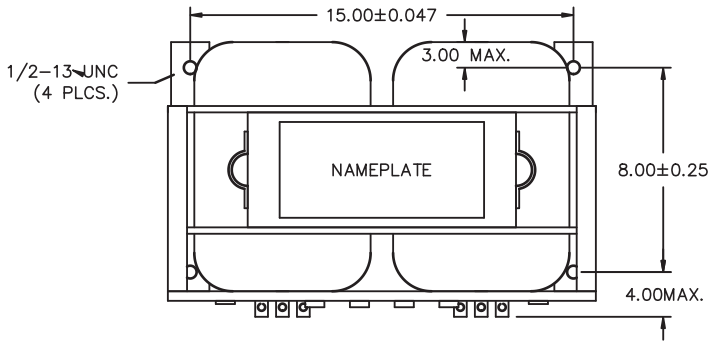
| | | | | |
|-----|-----|-----|-----|-------|
| 240 | | | | H1-H3 |
| 252 | 1-2 | 1-2 | 105 | H1-H4 |
| 240 | 2-3 | 2-3 | 100 | H1-H4 |
| 228 | 3-4 | 3-4 | 95 | H1-H4 |
| 216 | 4-5 | 4-5 | 90 | H1-H4 |

190734 (14500800-C)

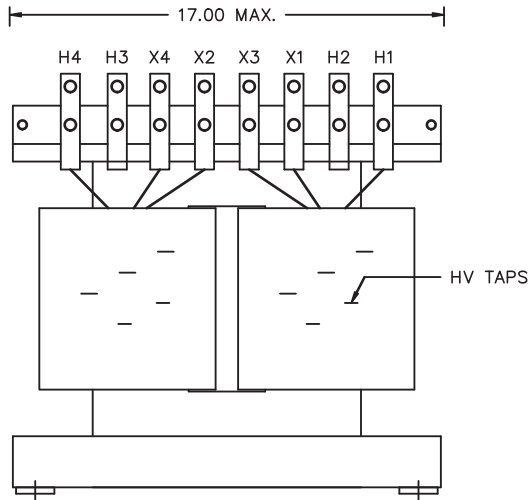
REV. F



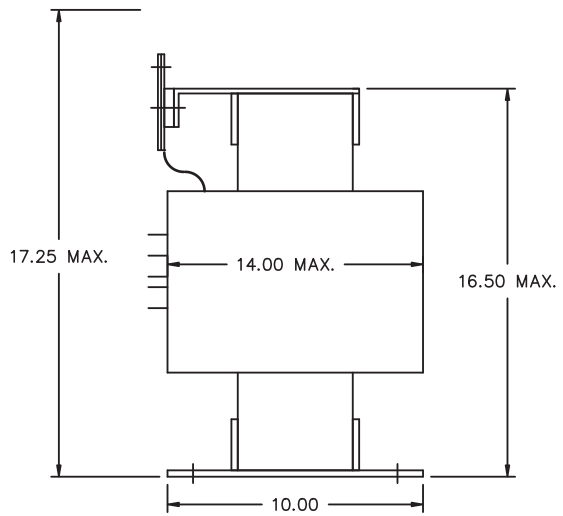
cab1003e



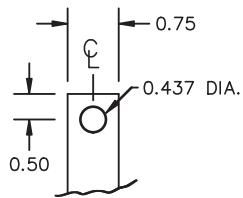
PLAN VIEW



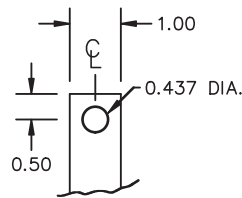
FRONT VIEW



SIDE VIEW



MATERIAL: 1/8" THICK CU.
TIN PLATED
HV TERMINAL DETAIL



MATERIAL: 1/4" THICK CU.
TIN PLATED
LV TERMINAL DETAIL

NOTES : ADHESIVE TERMINAL LABELS LOCATED ON TERMINAL SUPPORT BOARD.
EXTRA HOLES ON BASE PLATE FOR MOUNTING TO SHIPPING SKID.



TITLE: 1PH DISTRIBUTION TRANSFORMER
MECHANICAL INFORMATION

| | | | | |
|-----|------|----|----------|----------------|
| | | | | DES: GPATEL |
| | | | | DATE: 09/01/19 |
| NO. | DATE | BY | REVISION | SCALE: NTS |

SHEET 2 OF 2

EDB 190734

0.0 jwen 2009/08/12 20:55