



Hammond Power Solutions Inc.

TITLE: 1PH DISTRIBUTION TRANSFORMER
NAMEPLATE INFORMATION

NO.	DATE	BY	REVISION	DES: GPATEL
				DATE: 09/01/19
				SCALE: NTS

SHEET 1 OF 2

EDB 190732

0.0 j.wen 2009/08/12 20:55

SINGLE PHASE DRY TYPE TRANSFORMER
ALLEN-BRADLEY
MILWAUKEE, WI. USA



LR3902



E112313

P/N 40022-051-03

KVA 50

CLASS AN

TYPE G

TEMP. RISE °C 80

TEMP. CLASS °C 180

FREQ. Hz 60

IMPEDANCE % @ 100 °C 3.5

ENCL. TYPE -

WEIGHT LBS 380

INS. SYSTEM 180-1

SERIAL NO:

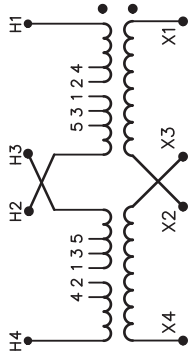
LOW VOLTAGE CONNECTION (LINES ON X1 AND X4)		
VOLTS	CONNECT	CONNECT
240	X2-X3	X1-X3
120	X2-X4	X1-X4

HIGH VOLTAGE CONNECTION (LINES ON H1 AND H4)				
VOLTS	LEFT JUMPER	RIGHT JUMPER	LEG PERCENT TAPS	CONNECT
504	1-2	1-2	105	H2-H3
492	2-3	1-2	102.5	H2-H3
480	2-3	2-3	100	H2-H3
468	3-4	2-3	97.5	H2-H3
456	3-4	3-4	95	H2-H3
444	4-5	3-4	92.5	H2-H3
432	4-5	4-5	90	H2-H3

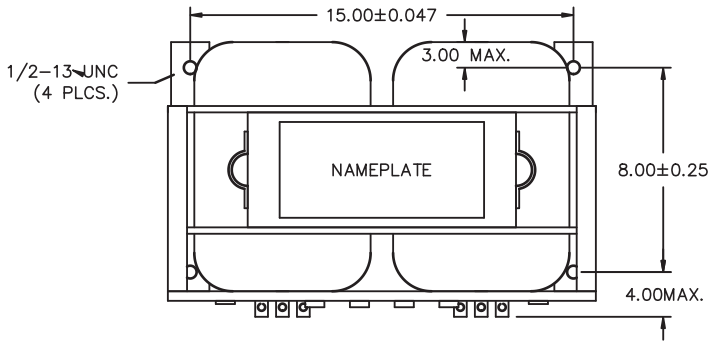
240				H1-H3
VOLTS				H2-H4
252	1-2	1-2	105	H1-H3
240	2-3	2-3	100	H1-H4
228	3-4	3-4	95	H1-H3
216	4-5	4-5	90	H1-H4

190732 (114701000)

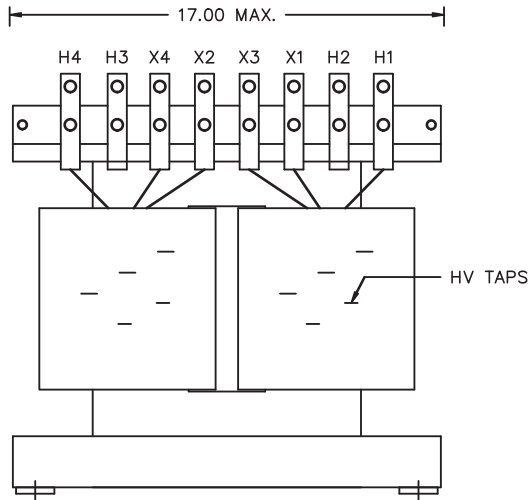
REV. F



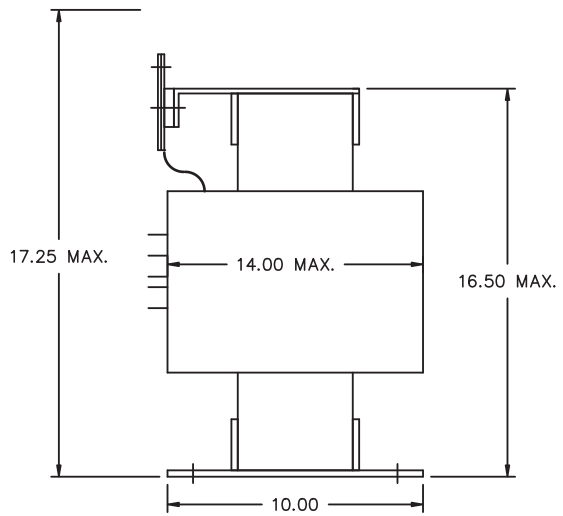
cab1003e



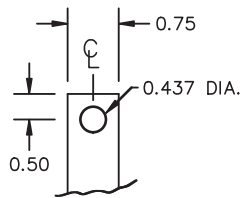
PLAN VIEW



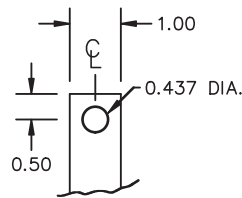
FRONT VIEW



SIDE VIEW



MATERIAL: 1/8" THICK CU.
TIN PLATED
HV TERMINAL DETAIL



MATERIAL: 1/4" THICK CU.
TIN PLATED
LV TERMINAL DETAIL

NOTES : ADHESIVE TERMINAL LABELS LOCATED ON TERMINAL SUPPORT BOARD.
EXTRA HOLES ON BASE PLATE FOR MOUNTING TO SHIPPING SKID.



Hammond Power Solutions Inc.

TITLE: 1PH DISTRIBUTION TRANSFORMER

				DES: GPATEL
				DATE: 09/01/19
NO.	DATE	BY	REVISION	SCALE: NTS

SHEET 2 OF 2

EDB 190732

0.0 jwen 2009/08/12 20:55