



Hammond Power Solutions Inc.

TITLE: **NECO**
NAMEPLATE INFORMATION

DES:	MCHRIST
DATE:	05/09/12
SCALE:	NTS

NO.	DATE	BY	REVISION

SHEET 1 OF 2

EDB114502000

0.2 rbhatia 2011/07/12 10:05

SINGLE PHASE DRY TYPE TRANSFORMER
ALLEN-BRADLEY
MILWAUKEE, WI. USA



LR3902



E112313

P/N

40022-051-05

KVA **37.5**

CLASS **AA**

TYPE **G**

TEMP. RISE °C **80**

TEMP. CLASS °C **180**

FREQ. Hz **60**

IMPEDANCE % @ 100 °C **2.9**

ENCL. TYPE **-**

WEIGHT LBS **360**

INS. SYSTEM **180-1**

SERIAL NO: **cab1001e**

VOLTS	% RATED VOLTAGE	CONNECTION
630	105	1-2
615	102.5	2-3
600	100	3-4
585	97.5	4-5
570	95	5-6
555	92.5	6-7
540	90	7-8

HV **600**

V **120/240**

BILL kV **-**

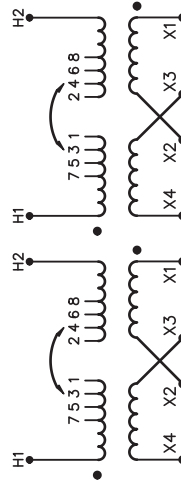
H1 H2

LV

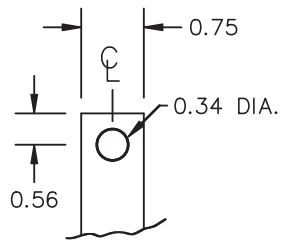
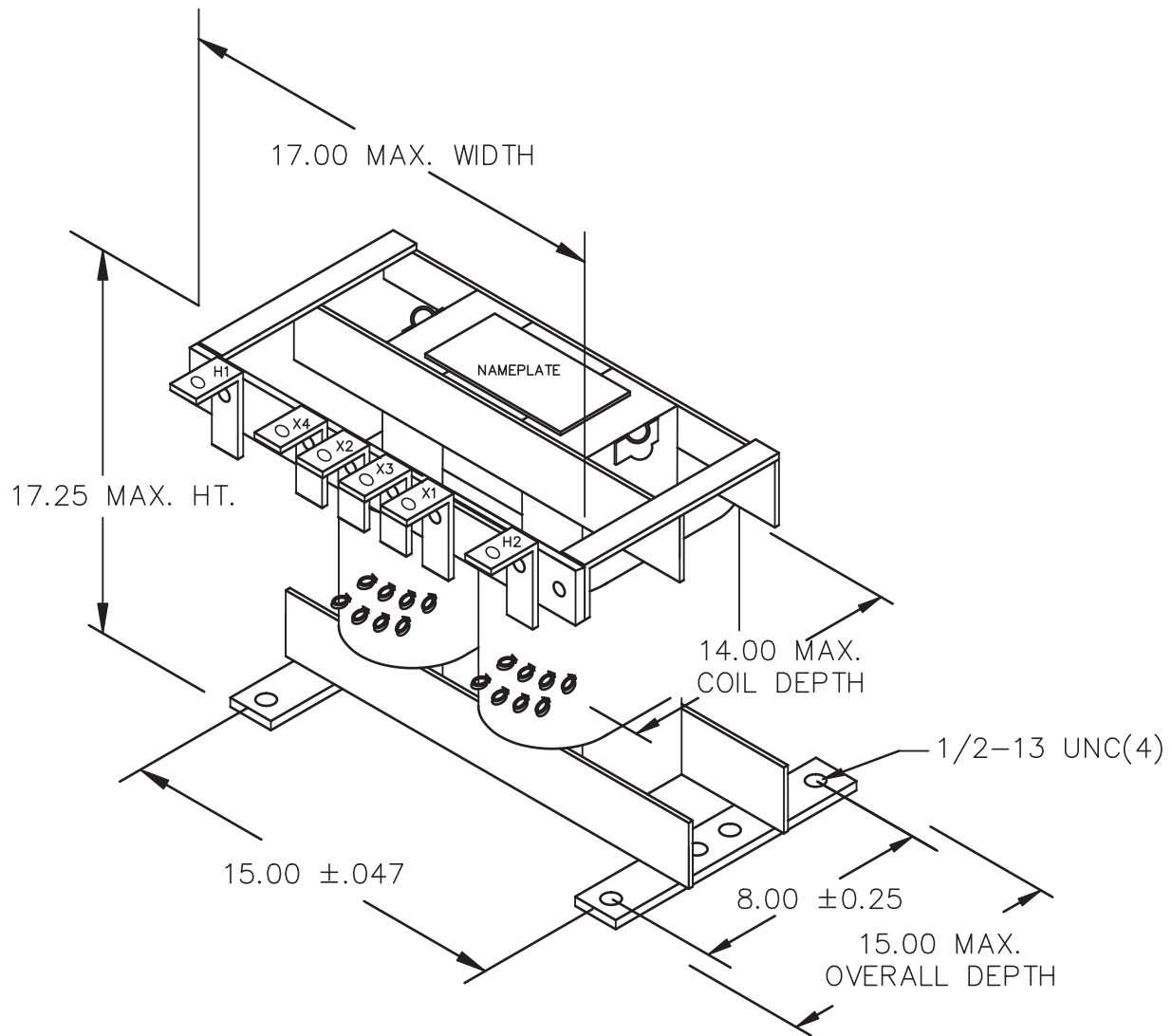
X4 X2 X3 X1

-

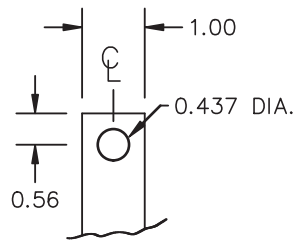
X4 X2 X3 X1



1145020
40022-051-05 REV. F



MATERIAL: 1/8" THICK CU.
TIN PLATED
HV TERMINAL DETAIL



MATERIAL: 1/4" THICK CU.
TIN PLATED
LV TERMINAL DETAIL

NOTES : ADHESIVE TERMINAL LABELS LOCATED ON TERMINAL SUPPORT BOARD.
EXTRA HOLES ON BASE PLATE FOR MOUNTING TO SHIPPING SKID.



Hammond Power Solutions Inc.

TITLE: NECO

				DES: MCHRIST
				DATE: 05/09/12
NO.	DATE	BY	REVISION	SCALE: NTS

SHEET 2 OF 2

EDB114502000

0.2 rbhatia 2011/07/12 10:05