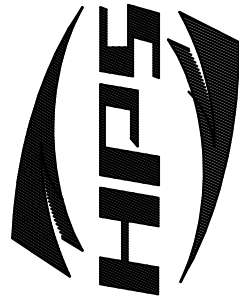


NOTES: 1. PUT UNITS IN STOCK UNDER "2853026" USING LABEL#L0008-E
 2. CHECK A.B. PART NO. AGAINST HAMMOND PACK SLIP

CROSS REFERENCE ROCKWELL PART # 40022-054-01



Hammond Power
Solutions Inc.

200HP

GUELPH, ONT. BARABOO, WI. COMPTON, CA. MONTERREY, MEXICO

285302600



**Hammond Power
Solutions Inc.**

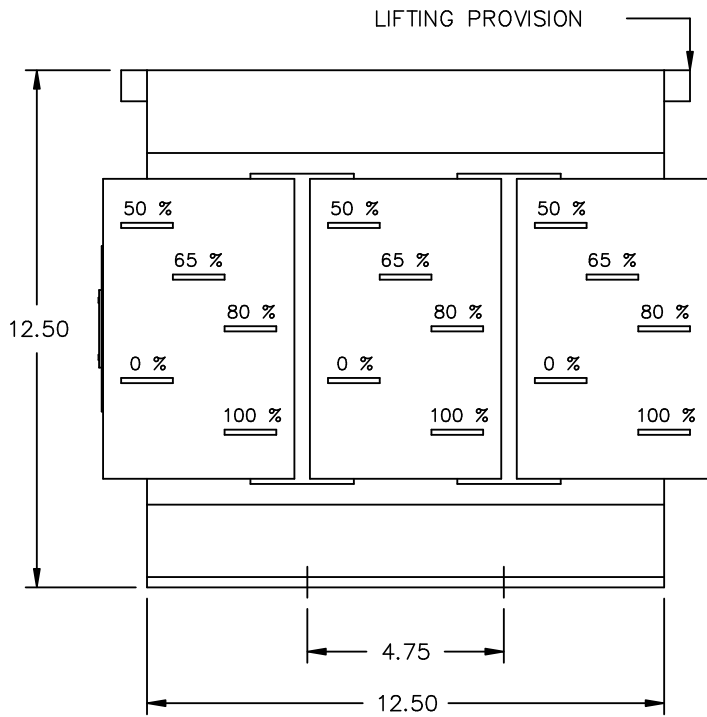
TITLE: MOTOR STARTING AUTO TRANSFORMER
NAMEPLATE INFORMATION

| | | | | |
|-----|------|----|----------|----------------|
| | | | | DES: GPATEL |
| | | | | DATE: 12/07/09 |
| NO. | DATE | BY | REVISION | SCALE: NTS |

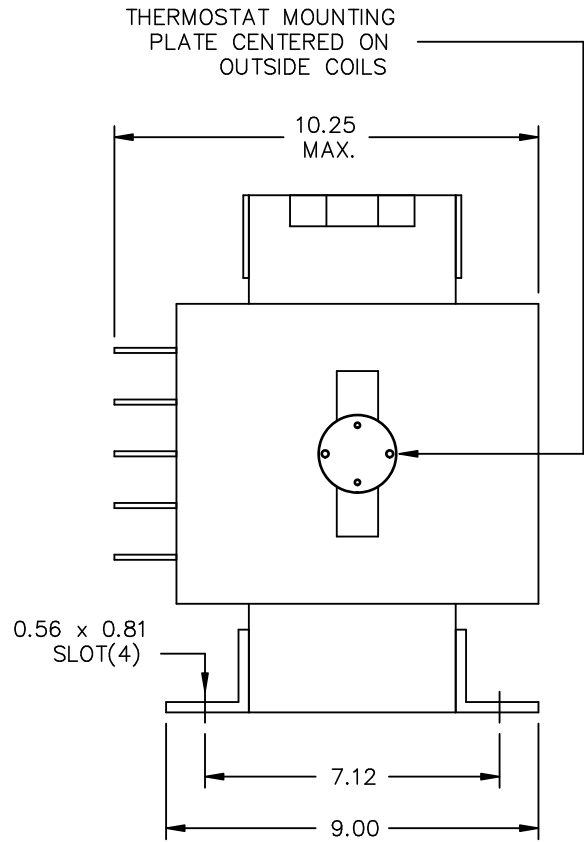
SHEET 1 OF 2

EDB285302600

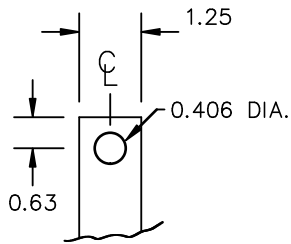
0.1 gpatel 2012/07/09 14:55



FRONT VIEW



SIDE VIEW



MATERIAL: 1/8" THICK CU.
TERMINAL DETAIL



TITLE: MOTOR STARTING AUTO TRANSFORMER
MECHANICAL INFORMATION

| | | | | |
|-----|------|----|----------|----------------|
| | | | | DES: GPATEL |
| | | | | DATE: 12/07/09 |
| NO. | DATE | BY | REVISION | SCALE: NTS |

SHEET 2 OF 2

EDB285302600

0.1 gpatel 2012/07/09 14:55