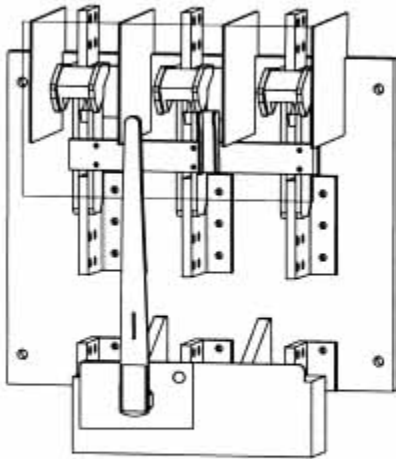


## TOP FEED SWITCHES RATED 600 VOLT AC

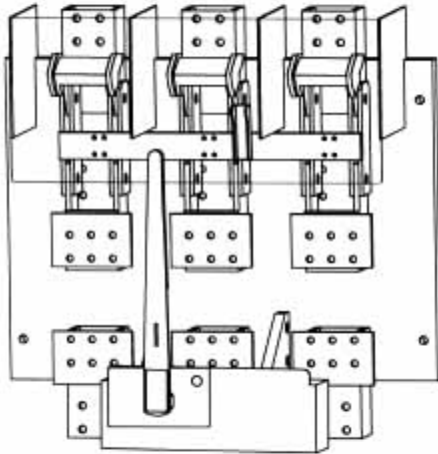


### SERIES VL (Dwg. O-1022)

#### CATALOG NUMBERS

Amp.	2-P 2-W	2-P 3-W	3-P 3-W	3-P 4-W	4-P 4-W
800	VL267	VL367N	<b>VL367</b>	VL467N	VL467
1200	VL268	VL368N	<b>VL368</b>	VL468N	VL468
1600	VL269	VL369N	<b>VL369</b>	VL469N	VL469
2000	VL2610	VL3610N	<b>VL3610</b>	VL4610N	VL4610
2500	VL2611	VL3611N	<b>VL3611</b>	VL4611N	VL4611
3000	VL2612	VL3612N	<b>VL3612</b>	VL4612N	VL4612

Shunt Trip Operator, add suffix -ST  
 Motorized Shunt Trip Operator, add suffix -MST



### SERIES SL (Dwg. O-1025)

#### CATALOG NUMBERS

Amp.	2-P 2-W	2-P 3-W	3-P 3-W	3-P 4-W	4-P 4-W
4000	SL2613	SL3613N	<b>SL3613</b>	SL4613N	SL4613
5000*	SL2614		<b>SL3614</b>		SL4614
6000*	SL2615		<b>SL3615</b>		SL4615

Shunt Trip Operator, add suffix -ST  
 Motorized Shunt Trip Operator, add suffix -MST  
 \* Not U.L. Listed

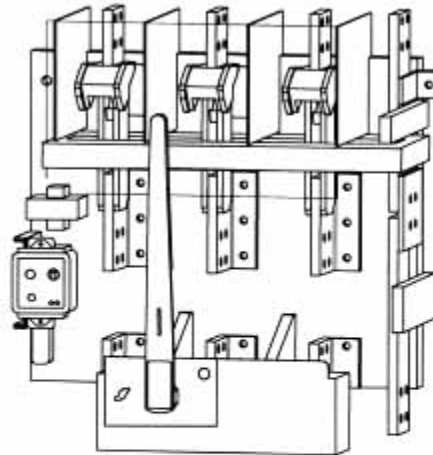
## SERIES VL & SL

### WITH INTEGRAL GROUND FAULT PROTECTION

Switches have integrally mounted ground fault relay and sensor, control transformer, shunt trip operator, and neutral (when applicable). Units are factory wired and factory tested.

800-3000 Amp. Dwg. O-1287

4000 Amp. Dwg. O-1328



#### CATALOG NUMBERS

Amp.	2-P 3-W 120/240V	3-P 3-W 240V	3-P 4-W 208Y/120V	3-P 4-W 240/120V	3-P 3-W 480V	3-P 4-W 480Y/277V	3-P 3-W 600V	3-P 4-W 600Y/347V	3-P 4-W 380Y/220V
800	VL367G1	VL367G2	VL367G3	VL367G4	VL367G5	<b>VL367G6</b>	VL367G7	VL367G8	VL367G9
1200	VL368G1	VL368G2	VL368G3	VL368G4	VL368G5	<b>VL368G6</b>	VL368G7	VL368G8	VL368G9
1600	VL369G1	VL369G2	VL369G3	VL369G4	VL369G5	<b>VL369G6</b>	VL369G7	VL369G8	VL369G9
2000	VL3610G1	VL3610G2	VL3610G3	VL3610G4	VL3610G5	<b>VL3610G6</b>	VL3610G7	VL36108	VL3610G9
2500	VL3611G1	VL3611G2	VL3611G3	VL3611G4	VL3611G5	<b>VL3611G6</b>	VL3611G7	VL3611G8	VL3611G9
3000	VL3612G1	VL3612G2	VL3612G3	VL3612G4	VL3612G5	<b>VL3612G6</b>	VL3612G7	VL3612G8	VL3612G9
4000	VL3613G1	VL3613G2	VL3613G3	VL3613G4	VL3613G5	<b>VL3613G6</b>	VL3613G7	VL3613G8	VL3613G9

Motorized Shunt Trip Operator, add suffix -MST

# ***boltswitch***<sup>®</sup>

## **FUSED POWER CIRCUIT DEVICES**

**OPEN TYPE SWITCHES FOR MOUNTING IN DEAD FRONT SWITCHBOARDS**



**SERIES VL- TOP FEED**  
800 THROUGH 3000 AMPERE

**SERIES SL- TOP FEED**  
4000 THROUGH 6000 AMPERE

**SERIES VLB- BOTTOM FEED**  
800 THROUGH 3000 AMPERE

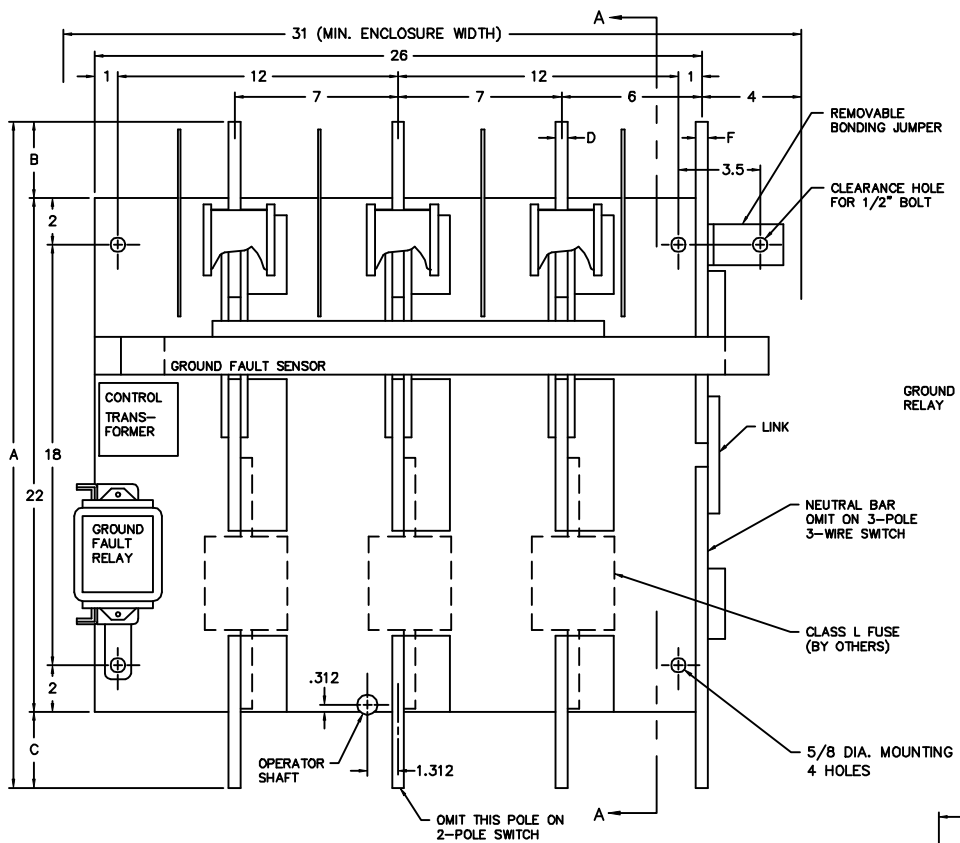
**SERIES SLB- BOTTOM FEED**  
4000 THROUGH 6000 AMPERE



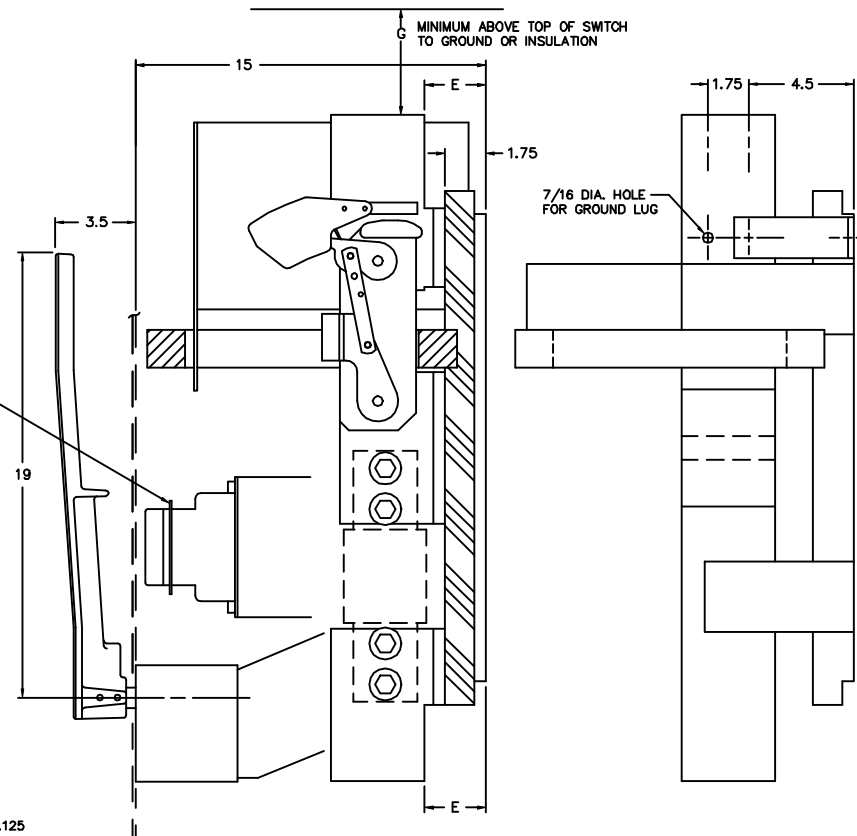
ALL SWITCHES 800-4000 AMPERE HAVE BEEN TESTED IN ACCORDANCE WITH UL977, AND ARE UL LISTED AS "FUSED POWER CIRCUIT DEVICES" UNDER FILE NO. E44498.

**APPLICATION:** PARTICULARLY RECOMMENDED FOR USE IN SERVICE ENTRANCE SWITCHGEAR, AND/OR WHERE THERE MAY BE HIGH AVAILABLE FAULT CURRENT. THEY WILL RECEIVE CLASS L FUSES.

**FEATURES:** 200,000 AMPERE FAULT CURRENT RATINGS • BOLTED PRESSURE CONTACTS • LOAD BREAK DESIGN • QUICK-MAKE QUICK-BREAK OPERATORS • VISIBLE CONTACTS • SILVER PLATED COPPER CURRENT CARRYING PARTS • GRID TYPE ARC CHUTES • INTERPOLE BARRIERS • TERMINALS DESIGNED FOR LUGS OR BUS BARS • PROVISIONS FOR UP TO THREE PADLOCKS.

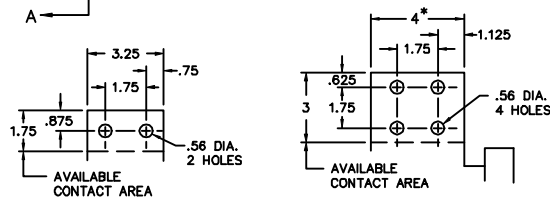


FRONT VIEW



SECTION A-A

SIDE VIEW (ILLUSTRATES NEUTRAL ONLY)



800 A. TERMINAL 1200-3000 A. TERM. \* 4.438 ON 3000 A. POLES ONLY

AMP	CATALOG NUMBER	NET WEIGHT	A	B	C	D	E	F	G		H
									GND.	INS.	
800	VL367-G6	179 LBS	25.75	2	1.75	.375	2.5	.25	8	4	NONE
1200	VL368-G6	186 LBS	28.5	3.25	3.25	.375	2.5	.31	10	6	NONE
1600	VL369-G6	188 LBS	28.5	3.25	3.25	.375	2.5	.375	12	6	60 SQ. IN.
2000	VL3610-G6	205 LBS	28.5	3.25	3.25	.5	2.625	.5	14	6	60 SQ. IN.
2500	VL3611-G6	220 LBS	28.5	3.25	3.25	.625	2.625	.625	16	6	80 SQ. IN.
3000	VL3612-G6	232 LBS	28.5	3.25	3.25	.75	2.625	.75	16	8	120 SQ. IN.

**VENTILATION**  
 WHEN THE SWITCH IS TOTALLY ENCLOSED, VENTILATING LOUVERS MUST BE PROVIDED YIELDING A MINIMUM OPEN AREA OF "H" SQUARE INCHES NEAR THE TOP OF THE ENCLOSURE, AND "H" SQUARE INCHES NEAR THE BOTTOM OF THE ENCLOSURE.

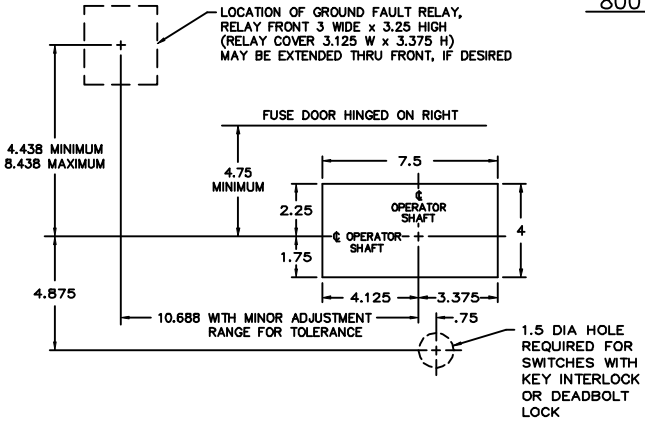
**OPERATOR DETAILS**  
 FOR OPERATOR DETAILS AND ALTERNATE FRONT CUT-OUTS, REFER TO DWG NO. O-1090A

**KEY INTERLOCK**  
 KEY INTERLOCK SPECIFICATIONS FOR SWITCHES EQUIPPED WITH KEY INTERLOCK PROVISIONS ARE:  
 .375 BOLT PROJECTION WHEN WITHDRAWN  
 - KIRK TYPE B  
 - SUPERIOR TYPE B6003

† CATALOG NO. AS SHOWN IS FOR 3 POLE, 4 WIRE, 277/480 VOLT SYSTEMS. SUFFIX "6" WILL CHANGE FOR OTHER SYSTEMS AS FOLLOWS:

POLE	WIRE	VOLTAGE	SUFFIX
2	3	120/240	1
3	3	240	2
3	4	120/208	3
3	4	120/240	4
3	3	480	5
3	3	600	7
3	4	347/600	8
3	4	220/380	9

NOTE: FOR WIRING DIAGRAM OF GROUND FAULT RELAY REFER TO DWG. NO. O-1431.



RECOMMENDED FRONT CUT-OUT

**SERIES VL SWITCHES WITH INTEGRAL GROUND FAULT ELEMENT**

SCALE: DATE: 11-26-90

APPROVED BY:

DRAWN BY WCE REVISED 7

**boltswitch, inc.**  
CRYSTAL LAKE, ILLINOIS 60014

DRAWING NUMBER  
O-1287

REV. 7 11-8-95 JAE, NEW FRONT CUT-OUT, HANDLE STYLE & LOCATION REVISED  
 REV. 6 10-7-91 WCE, DRAWING REFS. CHANGED  
 REV. 5 11-26-90 WCE, REDRAWN