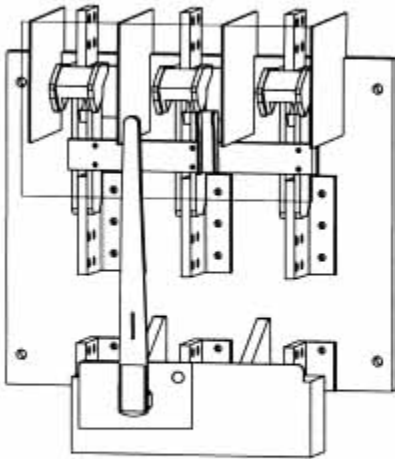


## TOP FEED SWITCHES RATED 600 VOLT AC

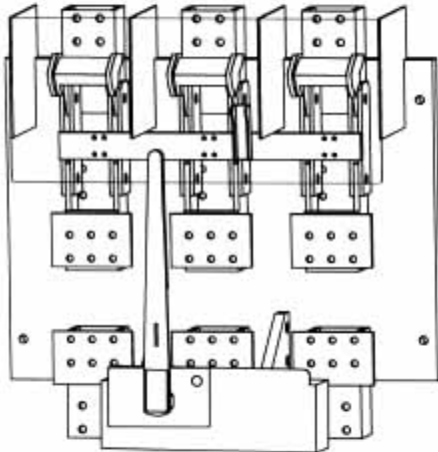


### SERIES VL (Dwg. O-1022)

CATALOG NUMBERS

| Amp. | 2-P 2-W | 2-P 3-W | 3-P 3-W       | 3-P 4-W | 4-P 4-W |
|------|---------|---------|---------------|---------|---------|
| 800  | VL267   | VL367N  | <b>VL367</b>  | VL467N  | VL467   |
| 1200 | VL268   | VL368N  | <b>VL368</b>  | VL468N  | VL468   |
| 1600 | VL269   | VL369N  | <b>VL369</b>  | VL469N  | VL469   |
| 2000 | VL2610  | VL3610N | <b>VL3610</b> | VL4610N | VL4610  |
| 2500 | VL2611  | VL3611N | <b>VL3611</b> | VL4611N | VL4611  |
| 3000 | VL2612  | VL3612N | <b>VL3612</b> | VL4612N | VL4612  |

Shunt Trip Operator, add suffix -ST  
 Motorized Shunt Trip Operator, add suffix -MST



### SERIES SL (Dwg. O-1025)

CATALOG NUMBERS

| Amp.  | 2-P 2-W | 2-P 3-W | 3-P 3-W       | 3-P 4-W | 4-P 4-W |
|-------|---------|---------|---------------|---------|---------|
| 4000  | SL2613  | SL3613N | <b>SL3613</b> | SL4613N | SL4613  |
| 5000* | SL2614  |         | <b>SL3614</b> |         | SL4614  |
| 6000* | SL2615  |         | <b>SL3615</b> |         | SL4615  |

Shunt Trip Operator, add suffix -ST  
 Motorized Shunt Trip Operator, add suffix -MST  
 \* Not U.L. Listed

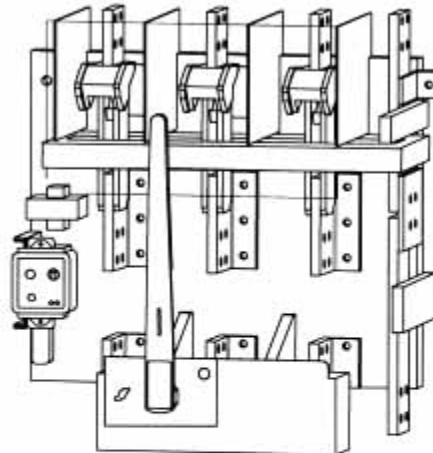
## SERIES VL & SL

### WITH INTEGRAL GROUND FAULT PROTECTION

Switches have integrally mounted ground fault relay and sensor, control transformer, shunt trip operator, and neutral (when applicable). Units are factory wired and factory tested.

800-3000 Amp. Dwg. O-1287

4000 Amp. Dwg. O-1328



CATALOG NUMBERS

| Amp. | 2-P 3-W<br>120/240V | 3-P 3-W<br>240V | 3-P 4-W<br>208Y/120V | 3-P 4-W<br>240/120V | 3-P 3-W<br>480V | 3-P 4-W<br>480Y/277V | 3-P 3-W<br>600V | 3-P 4-W<br>600Y/347V | 3-P 4-W<br>380Y/220V |
|------|---------------------|-----------------|----------------------|---------------------|-----------------|----------------------|-----------------|----------------------|----------------------|
| 800  | VL367G1             | VL367G2         | VL367G3              | VL367G4             | VL367G5         | <b>VL367G6</b>       | VL367G7         | VL367G8              | VL367G9              |
| 1200 | VL368G1             | VL368G2         | VL368G3              | VL368G4             | VL368G5         | <b>VL368G6</b>       | VL368G7         | VL368G8              | VL368G9              |
| 1600 | VL369G1             | VL369G2         | VL369G3              | VL369G4             | VL369G5         | <b>VL369G6</b>       | VL369G7         | VL369G8              | VL369G9              |
| 2000 | VL3610G1            | VL3610G2        | VL3610G3             | VL3610G4            | VL3610G5        | <b>VL3610G6</b>      | VL3610G7        | VL3610G8             | VL3610G9             |
| 2500 | VL3611G1            | VL3611G2        | VL3611G3             | VL3611G4            | VL3611G5        | <b>VL3611G6</b>      | VL3611G7        | VL3611G8             | VL3611G9             |
| 3000 | VL3612G1            | VL3612G2        | VL3612G3             | VL3612G4            | VL3612G5        | <b>VL3612G6</b>      | VL3612G7        | VL3612G8             | VL3612G9             |
| 4000 | VL3613G1            | VL3613G2        | VL3613G3             | VL3613G4            | VL3613G5        | <b>VL3613G6</b>      | VL3613G7        | VL3613G8             | VL3613G9             |

Motorized Shunt Trip Operator, add suffix -MST

# ***boltswitch***<sup>®</sup>

## **FUSED POWER CIRCUIT DEVICES**

**OPEN TYPE SWITCHES FOR MOUNTING IN DEAD FRONT SWITCHBOARDS**



**SERIES VL- TOP FEED**  
800 THROUGH 3000 AMPERE

**SERIES SL- TOP FEED**  
4000 THROUGH 6000 AMPERE

**SERIES VLB- BOTTOM FEED**  
800 THROUGH 3000 AMPERE

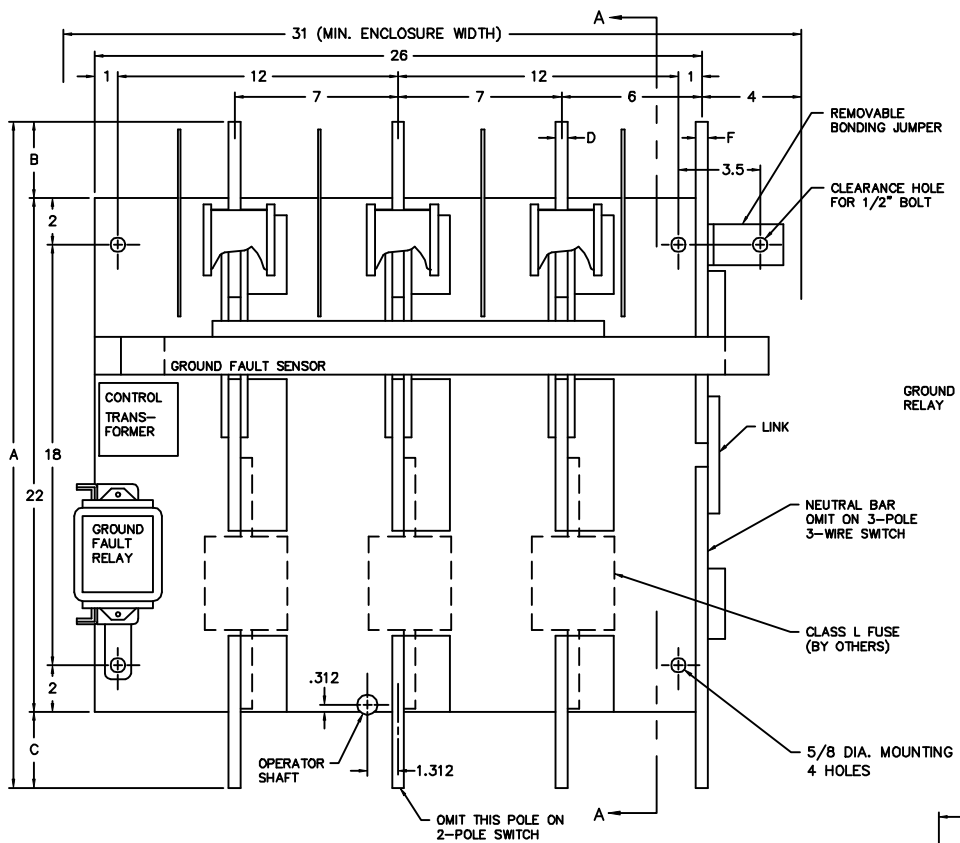
**SERIES SLB- BOTTOM FEED**  
4000 THROUGH 6000 AMPERE



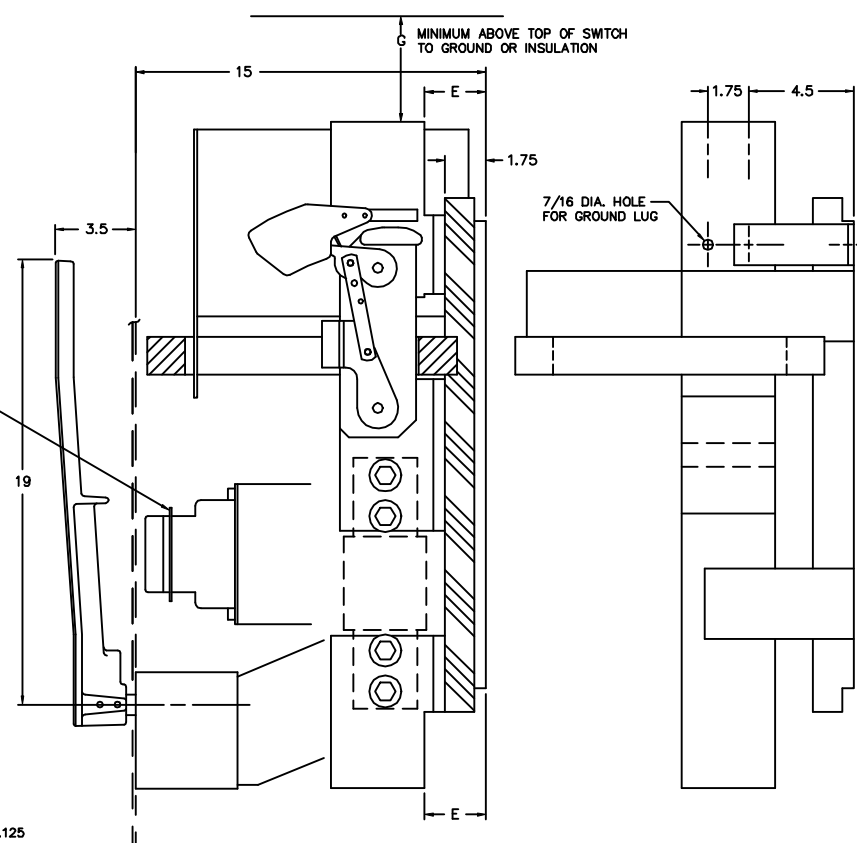
ALL SWITCHES 800-4000 AMPERE HAVE BEEN TESTED IN ACCORDANCE WITH UL977, AND ARE UL LISTED AS "FUSED POWER CIRCUIT DEVICES" UNDER FILE NO. E44498.

**APPLICATION:** PARTICULARLY RECOMMENDED FOR USE IN SERVICE ENTRANCE SWITCHGEAR, AND/OR WHERE THERE MAY BE HIGH AVAILABLE FAULT CURRENT. THEY WILL RECEIVE CLASS L FUSES.

**FEATURES:** 200,000 AMPERE FAULT CURRENT RATINGS • BOLTED PRESSURE CONTACTS • LOAD BREAK DESIGN • QUICK-MAKE QUICK-BREAK OPERATORS • VISIBLE CONTACTS • SILVER PLATED COPPER CURRENT CARRYING PARTS • GRID TYPE ARC CHUTES • INTERPOLE BARRIERS • TERMINALS DESIGNED FOR LUGS OR BUS BARS • PROVISIONS FOR UP TO THREE PADLOCKS.

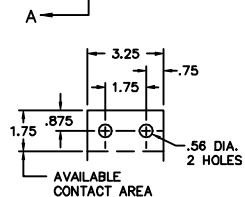


**FRONT VIEW**

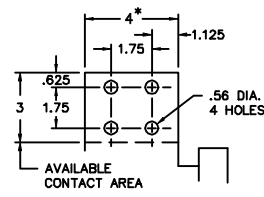


**SECTION A-A**

**SIDE VIEW**  
(ILLUSTRATES NEUTRAL ONLY)



**800 A. TERMINAL**



**1200-3000 A. TERM.**

\* 4.438 ON 3000 A. POLES ONLY

**VENTILATION**

WHEN THE SWITCH IS TOTALLY ENCLOSED, VENTILATING LOUVERS MUST BE PROVIDED YIELDING A MINIMUM OPEN AREA OF "H" SQUARE INCHES NEAR THE TOP OF THE ENCLOSURE, AND "H" SQUARE INCHES NEAR THE BOTTOM OF THE ENCLOSURE.

**OPERATOR DETAILS**

FOR OPERATOR DETAILS AND ALTERNATE FRONT CUT-OUTS, REFER TO DWG NO. 0-1090A

**KEY INTERLOCK**

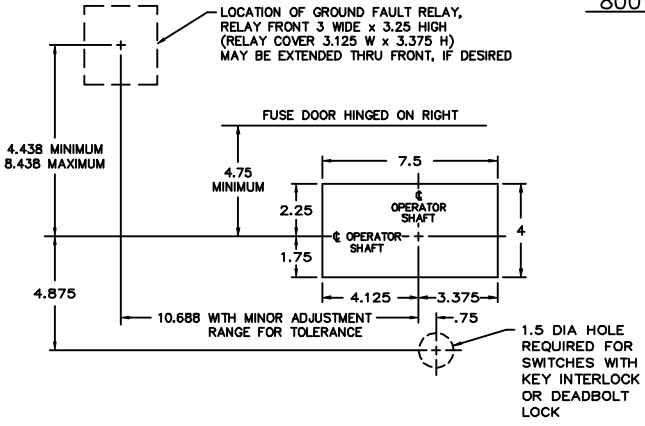
KEY INTERLOCK SPECIFICATIONS FOR SWITCHES EQUIPPED WITH KEY INTERLOCK PROVISIONS ARE:  
 .375 BOLT PROJECTION WHEN WITHDRAWN  
 - KIRK TYPE B  
 - SUPERIOR TYPE B6003

| AMP  | CATALOG NUMBER | NET WEIGHT | A     | B    | C    | D    | E     | F    | G    |      | H           |
|------|----------------|------------|-------|------|------|------|-------|------|------|------|-------------|
|      |                |            |       |      |      |      |       |      | GND. | INS. |             |
| 800  | VL367-G6       | 179 LBS    | 25.75 | 2    | 1.75 | .375 | 2.5   | .25  | 8    | 4    | NONE        |
| 1200 | VL368-G6       | 186 LBS    | 28.5  | 3.25 | 3.25 | .375 | 2.5   | .31  | 10   | 6    | NONE        |
| 1600 | VL369-G6       | 188 LBS    | 28.5  | 3.25 | 3.25 | .375 | 2.5   | .375 | 12   | 6    | 60 SQ. IN.  |
| 2000 | VL3610-G6      | 205 LBS    | 28.5  | 3.25 | 3.25 | .5   | 2.625 | .5   | 14   | 6    | 60 SQ. IN.  |
| 2500 | VL3611-G6      | 220 LBS    | 28.5  | 3.25 | 3.25 | .625 | 2.625 | .625 | 16   | 6    | 80 SQ. IN.  |
| 3000 | VL3612-G6      | 232 LBS    | 28.5  | 3.25 | 3.25 | .75  | 2.625 | .75  | 16   | 8    | 120 SQ. IN. |

† CATALOG NO. AS SHOWN IS FOR 3 POLE, 4 WIRE, 277/480 VOLT SYSTEMS. SUFFIX "6" WILL CHANGE FOR OTHER SYSTEMS AS FOLLOWS:

| POLE | WIRE | VOLTAGE | SUFFIX |
|------|------|---------|--------|
| 2    | 3    | 120/240 | 1      |
| 3    | 3    | 240     | 2      |
| 3    | 4    | 120/208 | 3      |
| 3    | 4    | 120/240 | 4      |
| 3    | 3    | 480     | 5      |
| 3    | 3    | 600     | 7      |
| 3    | 4    | 347/600 | 8      |
| 3    | 4    | 220/380 | 9      |

NOTE: FOR WIRING DIAGRAM OF GROUND FAULT RELAY REFER TO DWG. NO. 0-1431.



**RECOMMENDED FRONT CUT-OUT**

**SERIES VL SWITCHES WITH INTEGRAL GROUND FAULT ELEMENT**

SCALE: DATE: 11-26-90 APPROVED BY: DRAWN BY: WCE REVISED 7

REV. 7 11-8-95 JAE, NEW FRONT CUT-OUT, HANDLE STYLE & LOCATION REVISED  
 REV. 6 10-7-91 WCE, DRAWING REFS. CHANGED  
 REV. 5 11-26-90 WCE, REDRAWN

**boltswitch, inc.**  
 CRYSTAL LAKE, ILLINOIS 60014

DRAWING NUMBER  
**0-1287**