

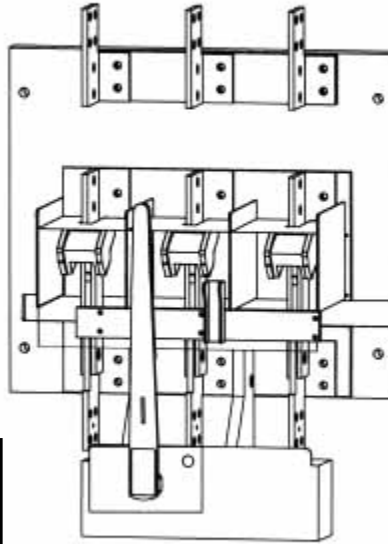
# BOTTOM FEED SWITCHES RATED 480 VOLT AC

## SERIES VLB (Dwg. 0-1103)

### CATALOG NUMBERS

Amp.	2-P 2-W	2-P 3-W	3-P 3-W	3-P 4-W	4-P 4-W
800	VLB247	VLB347N	VLB347	VLB447N	VLB447
1200	VLB248	VLB348N	VLB348	VLB448N	VLB448
1600	VLB249	VLB349N	VLB349	VLB449N	VLB449
2000	VLB2410	VLB3410N	VLB3410	VLB4410N	VLB4410
2500	VLB2411	VLB3411N	VLB3411	VLB4411N	VLB4411
3000	VLB2412	VLB3412N	VLB3412	VLB4412N	VLB4412

Shunt Trip Operator, add suffix -ST  
Motorized Shunt Trip Operator, add suffix -MST



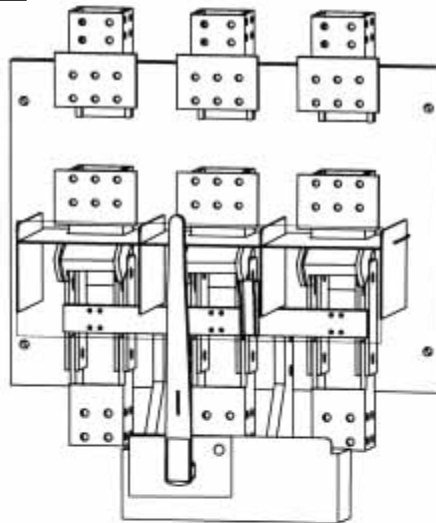
**VLB 369 IS A 600V SWITCH. SEE LAST PAGE OF THIS DOCUMENT FOR EXPLANATION**

## SERIES SLB (Dwg. 0-1116)

### CATALOG NUMBERS

Amp.	2-P 2-W	2-P 3-W	3-P 3-W	3-P 4-W
4000	SLB2413	SLB3413N	SLB3413	SLB4413N
5000*	SLB2414		SLB3414	
6000*	SLB2415		SLB3415	

Shunt Trip Operator, add suffix -ST  
Motorized Shunt Trip Operator, add suffix -MST  
\* Not U.L. Listed



## SERIES VLB & SLB

### WITH INTEGRAL GROUND FAULT PROTECTION

Switches have integrally mounted ground fault relay and sensor, control transformer, shunt trip operator, and neutral (when applicable). Units are factory wired and tested.

**800-3000 Amp. Dwg. O-1291**

**4000 Amp. Dwg. O-1330**

### CATALOG NUMBERS

Amp.	2-P 3-W 120/240V	3-P 3-W 240V	3-P 4-W 208Y/120V	3-P 4-W 240/120V	3-P 3-W 480V	3-P 4-W 480Y/277V	3-P 4-W 380Y/220V
800	VLB347G1	VLB347G2	VLB347G3	VLB347G4	VLB347G5	VLB347G6	VLB347G9
1200	VLB348G1	VLB348G2	VLB348G3	VLB348G4	VLB348G5	VLB348G6	VLB348G9
1600	VLB349G1	VLB349G2	VLB349G3	VLB349G4	VLB349G5	VLB349G6	VLB349G9
2000	VLB3410G1	VLB3410G2	VLB3410G3	VLB3410G4	VLB3410G5	VLB3410G6	VLB3410G9
2500	VLB3411G1	VLB3411G2	VLB3411G3	VLB3411G4	VLB3411G5	VLB3411G6	VLB3411G9
3000	VLB3412G1	VLB3412G2	VLB3412G3	VLB3412G4	VLB3412G5	VLB3412G6	VLB3412G9
4000	SLB3413G1	SLB3413G2	SLB3413G3	SLB3413G4	SLB3413G5	SLB3413G6	SLB3413G9

Motorized Shunt Trip Operator, add suffix -MST

# ***boltswitch***<sup>®</sup>

## **FUSED POWER CIRCUIT DEVICES**

**OPEN TYPE SWITCHES FOR MOUNTING IN DEAD FRONT SWITCHBOARDS**

**SERIES VL- TOP FEED**  
800 THROUGH 3000 AMPERE

**SERIES SL- TOP FEED**  
4000 THROUGH 6000 AMPERE



**SERIES VLB- BOTTOM FEED**  
800 THROUGH 3000 AMPERE

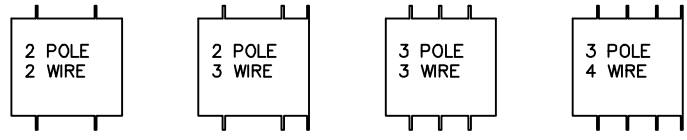
**SERIES SLB- BOTTOM FEED**  
4000 THROUGH 6000 AMPERE



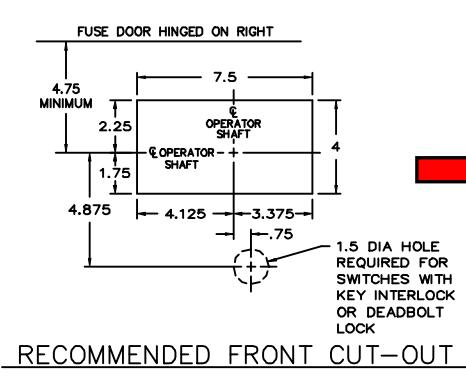
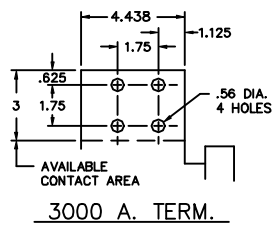
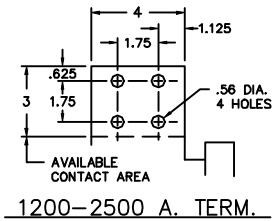
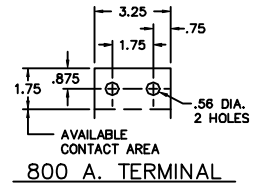
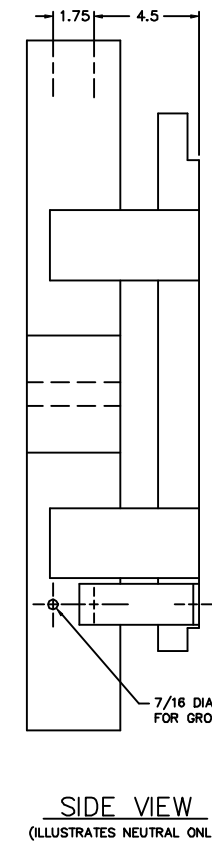
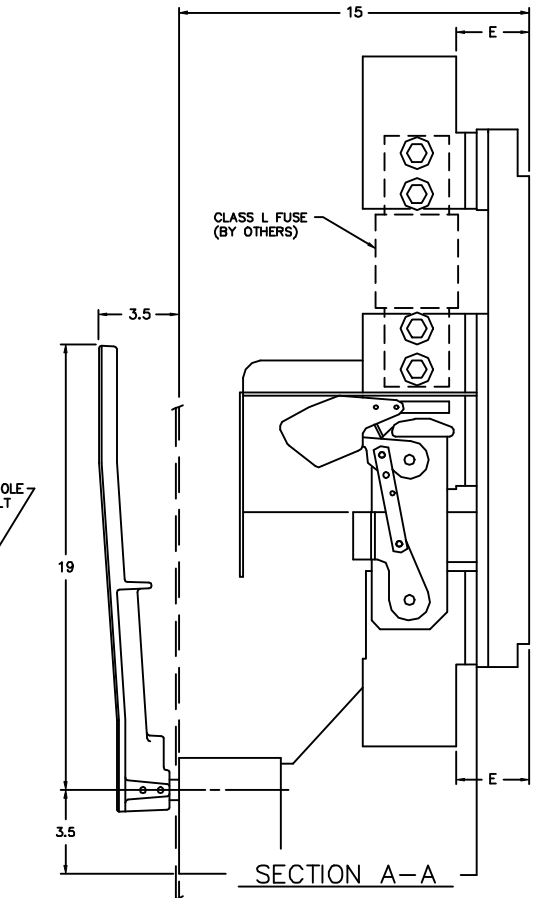
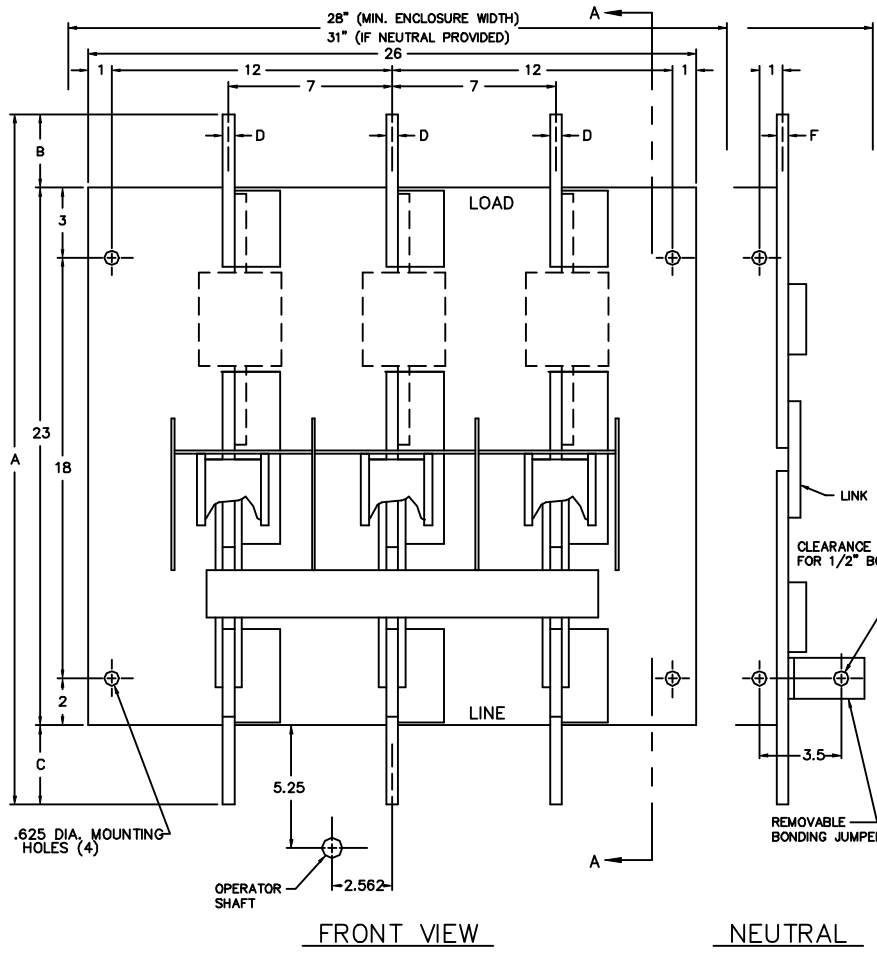
ALL SWITCHES 800-4000 AMPERE HAVE BEEN TESTED IN ACCORDANCE WITH UL977, AND ARE UL LISTED AS "FUSED POWER CIRCUIT DEVICES" UNDER FILE NO. E44498.

**APPLICATION:** PARTICULARLY RECOMMENDED FOR USE IN SERVICE ENTRANCE SWITCHGEAR, AND/OR WHERE THERE MAY BE HIGH AVAILABLE FAULT CURRENT. THEY WILL RECEIVE CLASS L FUSES.

**FEATURES:** 200,000 AMPERE FAULT CURRENT RATINGS • BOLTED PRESSURE CONTACTS • LOAD BREAK DESIGN • QUICK-MAKE QUICK-BREAK OPERATORS • VISIBLE CONTACTS • SILVER PLATED COPPER CURRENT CARRYING PARTS • GRID TYPE ARC CHUTES • INTERPOLE BARRIERS • TERMINALS DESIGNED FOR LUGS OR BUS BARS • PROVISIONS FOR UP TO THREE PADLOCKS.



**VENTILATION**  
 WHEN THE SWITCH IS TOTALLY ENCLOSED, VENTILATING LOUVERS MUST BE PROVIDED YIELDING A MINIMUM OPEN AREA OF "H" SQUARE INCHES NEAR THE TOP OF THE ENCLOSURE, AND "H" SQUARE INCHES NEAR THE BOTTOM OF THE ENCLOSURE.



**OPERATOR DETAILS**  
 FOR OPERATOR DETAILS AND ALTERNATE FRONT CUT-OUTS, REFER TO THE FOLLOWING DRAWINGS:  
 O-1023A MANUAL OPERATOR  
 O-1090A SHUNT TRIP OPERATOR

**KEY INTERLOCK**  
 KEY INTERLOCK SPECIFICATIONS FOR SWITCHES EQUIPPED WITH KEY INTERLOCK PROVISIONS ARE:  
 .375 BOLT PROJECTION WHEN WITHDRAWN  
 - KIRK TYPE B  
 - SUPERIOR TYPE B6003

AMP	CATALOG NUMBER				NET WT. (3-P, 3-W)	A	B	C	D	E	F	H
	2-P, 2-W	2-P, 3-W	3-P, 3-W	3-P, 4-W								
800	VLB247	VLB347-N	VLB347	VLB447-N	120	27	1.625	2.375	.375	3	.25	NONE
1200	VLB248	VLB348-N	VLB348	VLB448-N	130	29.5	3.125	3.375	.375	3	.31	NONE
1600	VLB249	VLB349-N	VLB349	VLB449-N	130	29.5	3.125	3.375	.375	3	.375	60 SQ. IN.
2000	VLB2410	VLB3410-N	VLB3410	VLB4410-N	150	29.5	3.125	3.375	.5	3.125	.5	60 SQ. IN.
2500	VLB2411	VLB3411-N	VLB3411	VLB4411-N	165	29.5	3.125	3.375	.625	3.125	.625	80 SQ. IN.
3000	VLB2412	VLB3412-N	VLB3412	VLB4412-N	177	29.5	3.125	3.375	.75	3.125	.75	120 SQ. IN.

**NOTES:**  
 FOR SWITCHES EQUIPPED WITH OPTIONAL SHUNT TRIP, ADD SUFFIX -ST TO CATALOG NUMBER.  
 800-2000A SWITCHES MAY BE RATED 600VAC. THE VOLTAGE DIGIT IN THE CAT. NO. CHANGES FROM "4" TO "6" (i.e. VLB349 BECOMES VLB369).

**SERIES VLB SWITCHES (BOTTOM-FEED)**  
 800-3000A, 2P/2W, 2P/3W, 3P/3W, 3P/4W, 480VAC

SCALE: 10-14-91      APPROVED BY:      DRAWN BY WCE  
 DATE: 10-14-91      REVISED 10

REV. 10 7-30-99 JAE, ADDED NOTE REGARDING 600VAC RATING ON 800-2000A  
 REV. 9 11-7-95 JAE, FRONT CUT-OUT REVISED, HANDLE REVISED  
 REV. 8 1-2-95 WCE, "B" & PANEL SIZE DIM. CORRECTED FOR MOLDED BASE  
 REV. 7 1-5-93 WCE, DIM. ADDED & CORRECTED FOR OPER. SHAFT