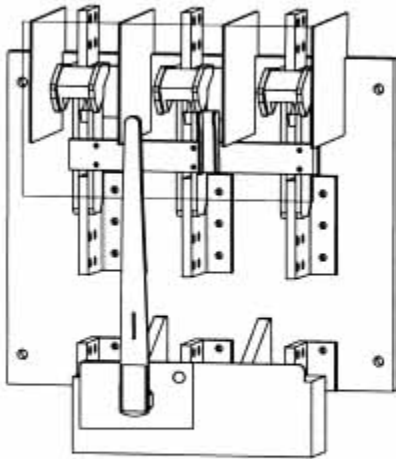


TOP FEED SWITCHES RATED 600 VOLT AC



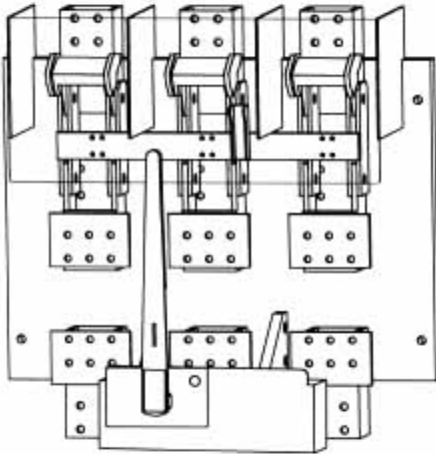
SERIES VL (Dwg. O-1022)

CATALOG NUMBERS

Amp.	2-P 2-W	2-P 3-W	3-P 3-W	3-P 4-W	4-P 4-W
800	VL267	VL367N	VL367	VL467N	VL467
1200	VL268	VL368N	VL368	VL468N	VL468
1600	VL269	VL369N	VL369	VL469N	VL469
2000	VL2610	VL3610N	VL3610	VL4610N	VL4610
2500	VL2611	VL3611N	VL3611	VL4611N	VL4611
3000	VL2612	VL3612N	VL3612	VL4612N	VL4612

Shunt Trip Operator, add suffix -ST

Motorized Shunt Trip Operator, add suffix -MST



SERIES SL (Dwg. O-1025)

CATALOG NUMBERS

Amp.	2-P 2-W	2-P 3-W	3-P 3-W	3-P 4-W	4-P 4-W
4000	SL2613	SL3613N	SL3613	SL4613N	SL4613
5000*	SL2614		SL3614		SL4614
6000*	SL2615		SL3615		SL4615

Shunt Trip Operator, add suffix -ST

Motorized Shunt Trip Operator, add suffix -MST

* Not U.L. Listed

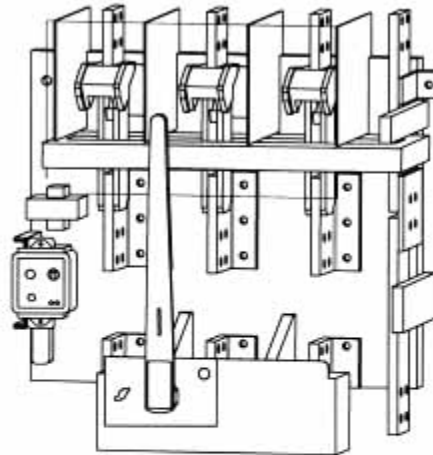
SERIES VL & SL

WITH INTEGRAL GROUND FAULT PROTECTION

Switches have integrally mounted ground fault relay and sensor, control transformer, shunt trip operator, and neutral (when applicable). Units are factory wired and factory tested.

800-3000 Amp. Dwg. O-1287

4000 Amp. Dwg. O-1328



CATALOG NUMBERS

Amp.	2-P 3-W 120/240V	3-P 3-W 240V	3-P 4-W 208Y/120V	3-P 4-W 240/120V	3-P 3-W 480V	3-P 4-W 480Y/277V	3-P 3-W 600V	3-P 4-W 600Y/347V	3-P 4-W 380Y/220V
800	VL367G1	VL367G2	VL367G3	VL367G4	VL367G5	VL367G6	VL367G7	VL367G8	VL367G9
1200	VL368G1	VL368G2	VL368G3	VL368G4	VL368G5	VL368G6	VL368G7	VL368G8	VL368G9
1600	VL369G1	VL369G2	VL369G3	VL369G4	VL369G5	VL369G6	VL369G7	VL369G8	VL369G9
2000	VL3610G1	VL3610G2	VL3610G3	VL3610G4	VL3610G5	VL3610G6	VL3610G7	VL3610G8	VL3610G9
2500	VL3611G1	VL3611G2	VL3611G3	VL3611G4	VL3611G5	VL3611G6	VL3611G7	VL3611G8	VL3611G9
3000	VL3612G1	VL3612G2	VL3612G3	VL3612G4	VL3612G5	VL3612G6	VL3612G7	VL3612G8	VL3612G9
4000	VL3613G1	VL3613G2	VL3613G3	VL3613G4	VL3613G5	VL3613G6	VL3613G7	VL3613G8	VL3613G9

Motorized Shunt Trip Operator, add suffix -MST

boltswitch[®]

FUSED POWER CIRCUIT DEVICES

OPEN TYPE SWITCHES FOR MOUNTING IN DEAD FRONT SWITCHBOARDS



SERIES VL- TOP FEED
800 THROUGH 3000 AMPERE

SERIES SL- TOP FEED
4000 THROUGH 6000 AMPERE

SERIES VLB- BOTTOM FEED
800 THROUGH 3000 AMPERE

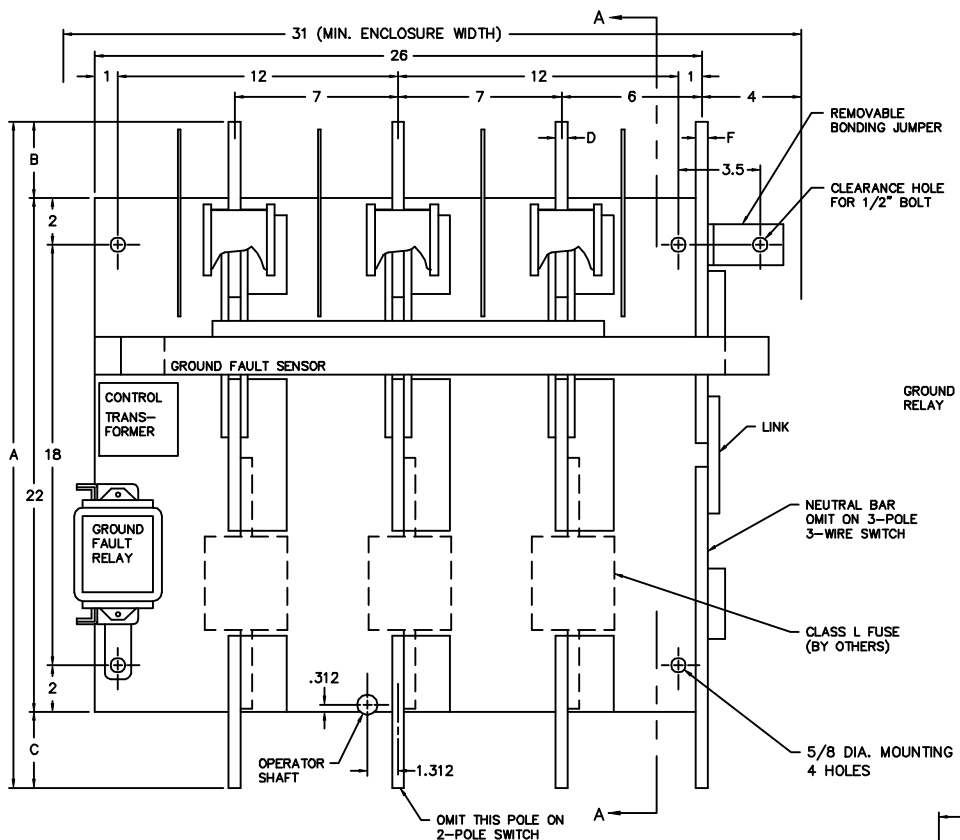
SERIES SLB- BOTTOM FEED
4000 THROUGH 6000 AMPERE



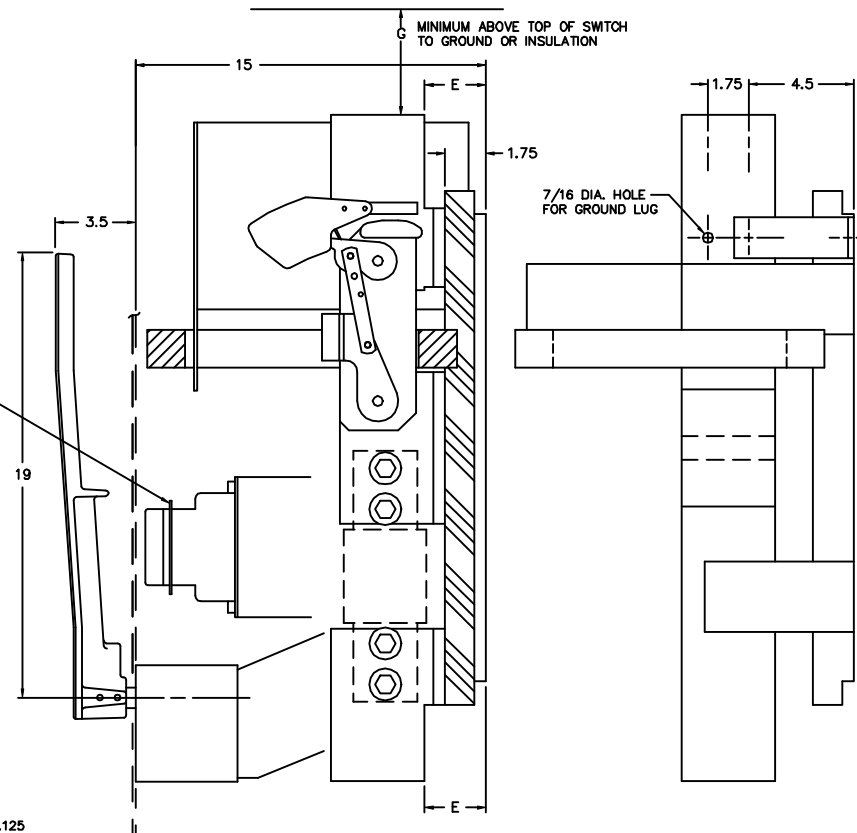
ALL SWITCHES 800-4000 AMPERE HAVE BEEN TESTED IN ACCORDANCE WITH UL977, AND ARE UL LISTED AS "FUSED POWER CIRCUIT DEVICES" UNDER FILE NO. E44498.

APPLICATION: PARTICULARLY RECOMMENDED FOR USE IN SERVICE ENTRANCE SWITCHGEAR, AND/OR WHERE THERE MAY BE HIGH AVAILABLE FAULT CURRENT. THEY WILL RECEIVE CLASS L FUSES.

FEATURES: 200,000 AMPERE FAULT CURRENT RATINGS • BOLTED PRESSURE CONTACTS • LOAD BREAK DESIGN • QUICK-MAKE QUICK-BREAK OPERATORS • VISIBLE CONTACTS • SILVER PLATED COPPER CURRENT CARRYING PARTS • GRID TYPE ARC CHUTES • INTERPOLE BARRIERS • TERMINALS DESIGNED FOR LUGS OR BUS BARS • PROVISIONS FOR UP TO THREE PADLOCKS.

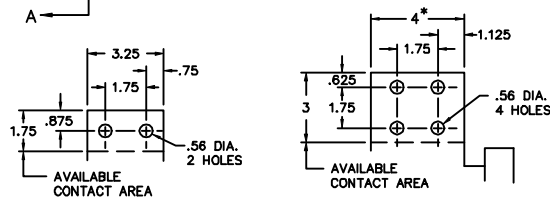


FRONT VIEW

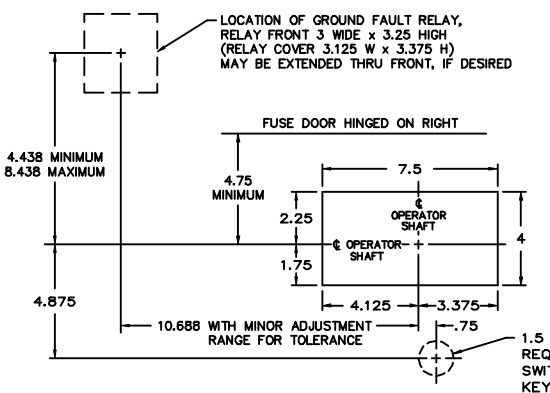


SECTION A-A

SIDE VIEW (ILLUSTRATES NEUTRAL ONLY)



AMP	CATALOG NUMBER	NET WEIGHT	A	B	C	D	E	F	G		H
									GND.	INS.	
800	VL367-G6	179 LBS	25.75	2	1.75	.375	2.5	.25	8	4	NONE
1200	VL368-G6	186 LBS	28.5	3.25	3.25	.375	2.5	.31	10	6	NONE
1600	VL369-G6	188 LBS	28.5	3.25	3.25	.375	2.5	.375	12	6	60 SQ. IN.
2000	VL3610-G6	205 LBS	28.5	3.25	3.25	.5	2.625	.5	14	6	60 SQ. IN.
2500	VL3611-G6	220 LBS	28.5	3.25	3.25	.625	2.625	.625	16	6	80 SQ. IN.
3000	VL3612-G6	232 LBS	28.5	3.25	3.25	.75	2.625	.75	16	8	120 SQ. IN.



RECOMMENDED FRONT CUT-OUT

VENTILATION

WHEN THE SWITCH IS TOTALLY ENCLOSED, VENTILATING LOUVERS MUST BE PROVIDED YIELDING A MINIMUM OPEN AREA OF "H" SQUARE INCHES NEAR THE TOP OF THE ENCLOSURE, AND "H" SQUARE INCHES NEAR THE BOTTOM OF THE ENCLOSURE.

OPERATOR DETAILS

FOR OPERATOR DETAILS AND ALTERNATE FRONT CUT-OUTS, REFER TO DWG NO. 0-1090A

KEY INTERLOCK

KEY INTERLOCK SPECIFICATIONS FOR SWITCHES EQUIPPED WITH KEY INTERLOCK PROVISIONS ARE:

- .375 BOLT PROJECTION WHEN WITHDRAWN
- KIRK TYPE B
- SUPERIOR TYPE B6003

† CATALOG NO. AS SHOWN IS FOR 3 POLE, 4 WIRE, 277/480 VOLT SYSTEMS. SUFFIX "6" WILL CHANGE FOR OTHER SYSTEMS AS FOLLOWS:

NOTE: FOR WIRING DIAGRAM OF GROUND FAULT RELAY REFER TO DWG. NO. 0-1431.

POLE	WIRE	VOLTAGE	SUFFIX
2	3	120/240	1
3	3	240	2
3	4	120/208	3
3	4	120/240	4
3	3	480	5
3	3	600	7
3	4	347/600	8
3	4	220/380	9

SERIES VL SWITCHES WITH INTEGRAL GROUND FAULT ELEMENT

SCALE: DATE: 11-26-90

APPROVED BY:

DRAWN BY WCE

REVISED 7

REV. 7 11-8-95 JAE, NEW FRONT CUT-OUT, HANDLE STYLE & LOCATION REVISED
 REV. 6 10-7-91 WCE, DRAWING REFS. CHANGED
 REV. 5 11-26-90 WCE, REDRAWN