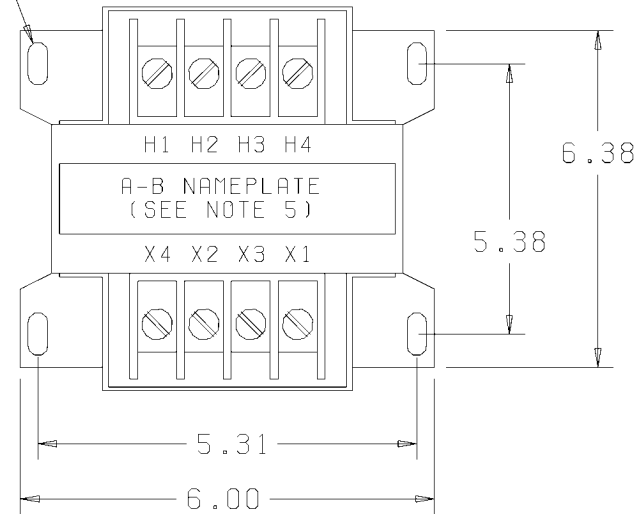


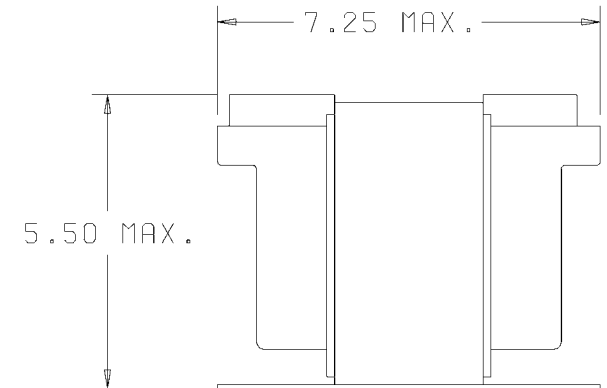
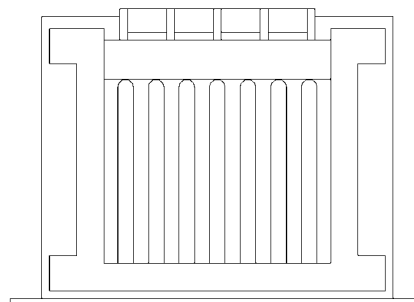
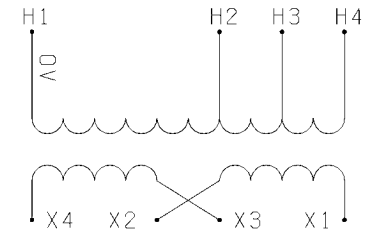
NOTES:

- 1) ALL DIMENSIONS ARE +/- 0.06 UNLESS OTHERWISE NOTED.
- 2) TRANSFORMER IS CSA CERTIFIED (LR3902-88M) AND UL LISTED (E50394 & LISTING #252L) AS TYPE 3AH.
- 3) CE MARKED PER REQUIREMENTS OF IEC 989:1991 AND RELEVANT SECTIONS OF EC LOW VOLTAGE DIRECTIVE 73/23/EEC.
- 4) TRANSFORMER IS TERMINATED WITH #8/32 SLOTTED/TORX(T-20) TERMINAL SCREWS.
- 5) NAMEPLATE TO BE OBTAINED FROM ALLEN-BRADLEY CO. OR SUPPLIER. STAMP NAMEPLATE WITH A-B PART NUMBER, PRIMARY AND SECONDARY VOLTAGES, FREQUENCIES, AND KVA. UL RECOGNIZED "TYPE" DESIGNATION AND CSA "FILE NUMBER" MUST BE STAMPED BY EACH SUPPLIER ON THE NAMEPLATE.
- 6) VPI GLOSS BLACK FINISH OVER ENTIRE TRANSFORMER. WELDED CORE CONSTRUCTION ACCEPTABLE. 80°C TEMPERATURE USE CLASS B (130°C) INSULATION.
- 7) SECONDARY JUMPERS ARE INCLUDED BETWEEN X1-X3, X2-X4.

(4)-0.31 X 0.69 SLOTS



PRIMARY VOLTAGE	SUPPLY LINES CONNECT TO	SECONDARY VOLTAGE	LOAD LINES CONNECT TO	INSTALL JUMPERS BETWEEN
380	H1-H2	110-115	X1-X4	X1-X3, X2-X4
400	H1-H3	110-115	X1-X4	X1-X3, X2-X4
415	H1-H4	110-115	X1-X4	X1-X3, X2-X4
380	H1-H2	220-230	X1-X4	X2-X3
400	H1-H3	220-230	X1-X4	X2-X3
415	H1-H3	240	X1-X4	X2-X3



PARTS MUST CONFORM TO APPLICABLE ALLEN-BRADLEY CO. WORKMANSHIP STANDARD 40126-700



PART NUMBER	CHANGE LETTER
-01	C

REFERENCES	NONE	1KVA 50/60 HZ TRANSFORMER		CV 40121.472.R4.REM
REVISION	DIMENSIONS APPLY BEFORE SURFACE TREATMENT	<p>ALLEN-BRADLEY A ROCKWELL INTERNATIONAL COMPANY</p> <p>THIS DRAWING IS THE PROPERTY OF THE ALLEN-BRADLEY CO. INC. AND MAY NOT BE COPIED, USED OR DISCLOSED FOR ANY PURPOSE EXCEPT AS AUTHORIZED IN WRITING BY THE ALLEN-BRADLEY CO. INC.</p>		
RELEASE	(DIMENSIONS IN INCHES) TOLERANCES UNLESS OTHERWISE SPECIFIED			
1 21253-97	2 PLACE DECIMAL (.XX) ± .02			
2 21239-97	3 PLACE DECIMAL (.XXX) ± .005			
3 21307-97	ANGLES ± 1°	DR.K.L. JENNINGS	DATE 7-24-97	SHEET 1 OF 1
4 21267-98		CHKD. N/A	DATE N/A	DWG. SIZE B
		APPDC. MALKOWSKI	DATE 7-28-97	40121-472

Packaged Control Cadds