

# Edison Fuses – Fuse Blocks for Class J Fuses

## 61 Amp to 100 Amp

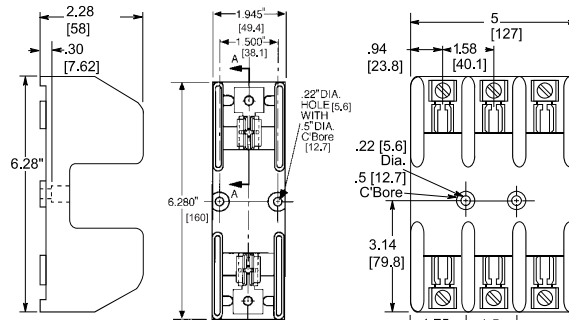


Figure 4

Figure 5

## 101 Amp to 200 Amp

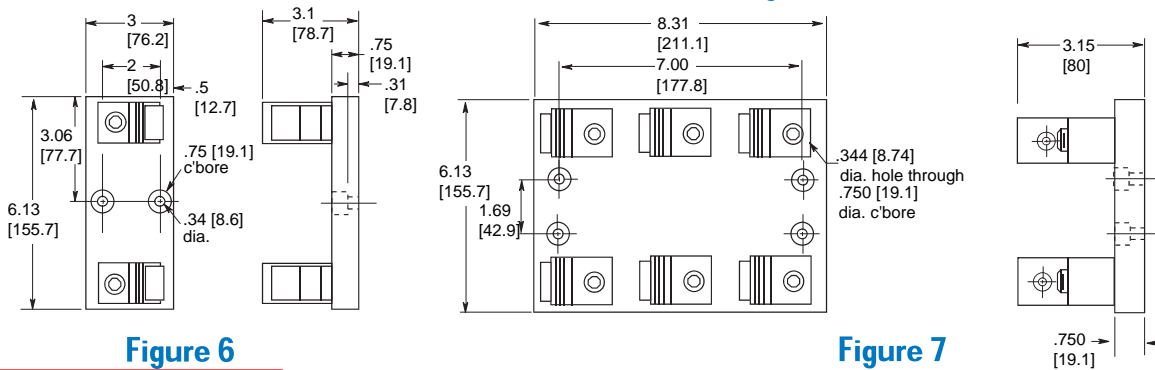


Figure 6

Figure 7

## 201 Amp to 400 Amp

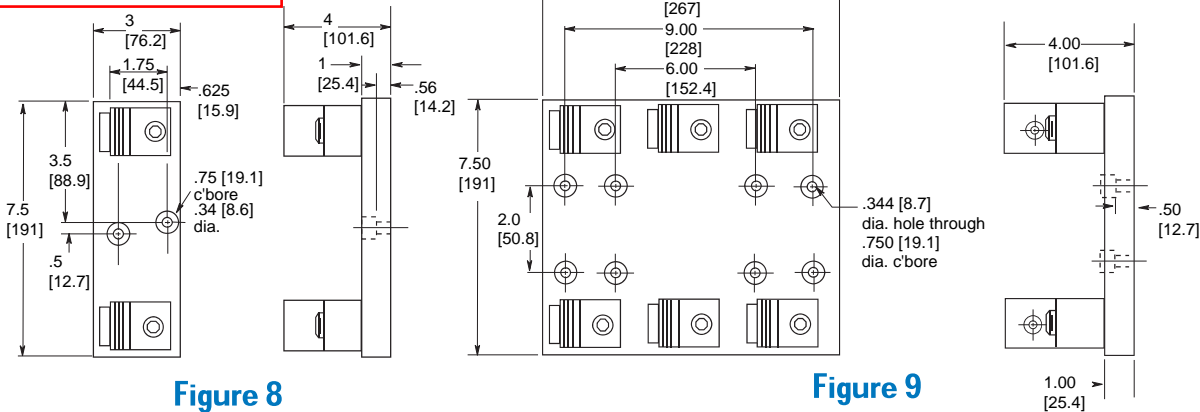


Figure 8

Figure 9

## 401 Amp to 600 Amp

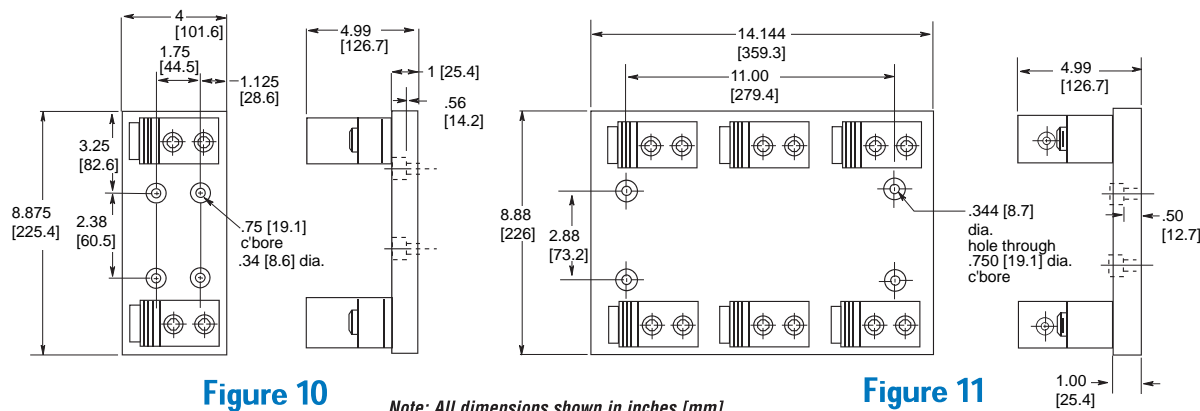


Figure 10

Figure 11

Note: All dimensions shown in inches [mm]

- Company Information
- Systems Overview
- Programmable Controllers
- Field I/O
- Software
- C-more & other HMI
- Drives
- Soft Starters
- Motors & Gearbox
- Steppers/ Servos
- Motor Controls
- Proximity Sensors
- Photo Sensors
- Limit Switches
- Encoders
- Current Sensors
- Pressure Sensors
- Temperature Sensors
- Pushbuttons/ Lights
- Process
- Relays/ Timers
- Comm.
- Terminal Blocks & Wiring
- Power
- Circuit Protection**
- Enclosures
- Tools
- Pneumatics
- Safety
- Appendix
- Product Index
- Part # Index