

**CROSS REF  
OF  
80026-489-01**

**CONTROL  
TRANSFORMER**



low power applications. Available VA ratings include 5 VA, 20 VA, and 50 VA. 5 VA and 20 VA sizes are also available as printed circuit board transformers.

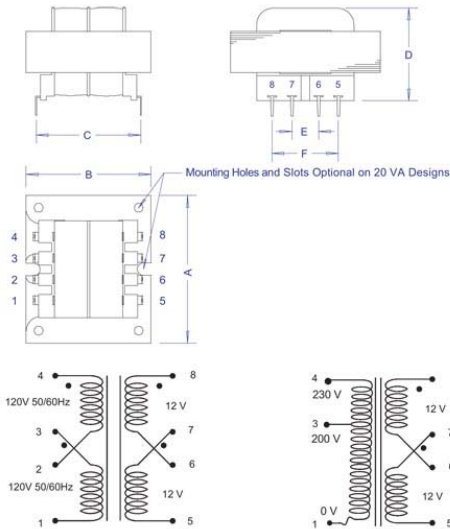
All models in this series are UL and C-UL Recognized and feature Class 130 (B) Insulation systems for long life. These transformers are recognized as Class 2 Inherently Limited Devices which means they may be used without additional overload protection. This provides additional savings when compared with General Purpose or Not Inherently Limited Class 2 Devices which must be used in conjunction with a fuse or circuit breaker. 5 VA models are self fusing while the 20 VA and 50 VA models incorporate a one shot thermal fuse to limit temperatures in the event of a short circuit or extended overload condition.

This series is ideal for low power control applications, low voltage lighting, appliance controls, etc.

Designed for use in Appliance, Vending, HVAC, Door Openers, and other applications requiring a Class 2 Control Transformer. Ideally suited for operating low voltage

transformers in conjunction with a pin and socket type connector that can be mated to a matching connector on the printed circuit board.

Designed for use in Appliances, Vending Machines, HVAC Equipment, Test Equipment, Door Openers, Industrial and Motor Controls or any application where a



Transformers with single primary windings terminate on pins 1 & 4.  
Transformers with single secondary windings terminate on pins 5 & 8.

Model:	Input:	Frequency:	Output:	Capacity:	A	B	C	D	E	F
16080-PC	115V	50/60Hz	12V	5VA	1-5/8	1-5/16	1.29	1-3/16	0.35	0.85
16081-PC	115/230V	50/60Hz	12V	5VA	1-5/8	1-5/16	1.29	1-3/16	0.35	0.85
16082-PC	200/230V	50/60Hz	12V	5VA	1-5/8	1-5/16	1.29	1-3/16	0.35	0.85
16083-PC	115V	50/60Hz	12/24	5VA	1-5/8	1-5/16	1.28	1-5/16	0.35	0.85
16084-PC	115/230V	50/60Hz	12/24	5VA	1-5/8	1-5/16	1.28	1-5/16	0.35	0.85
16085-PC	200/230V	50/60Hz	12/24	5VA	1-5/8	1-5/16	1.28	1-5/16	0.35	0.85
16086-PC	115V	50/60Hz	12V	20VA	2-1/4	1-7/8	1.59	1-7/16	0.40	1.00
16087-PC	115/230V	50/60Hz	12V	20VA	2-1/4	1-7/8	1.59	1-7/16	0.40	1.00
16088-PC	200/230V	50/60Hz	12V	20VA	2-1/4	1-7/8	1.59	1-7/16	0.40	1.00
16089-PC	115V	50/60Hz	12/24	20VA	2-1/4	1-7/8	1.59	1-7/16	0.40	1.00
16090-PC	115/230V	50/60Hz	12/24	20VA	2-1/4	1-7/8	1.59	1-7/16	0.40	1.00
16091-PC	200/230V	50/60Hz	12/24	20VA	2-1/4	1-7/8	1.59	1-7/16	0.40	1.00

**Home**