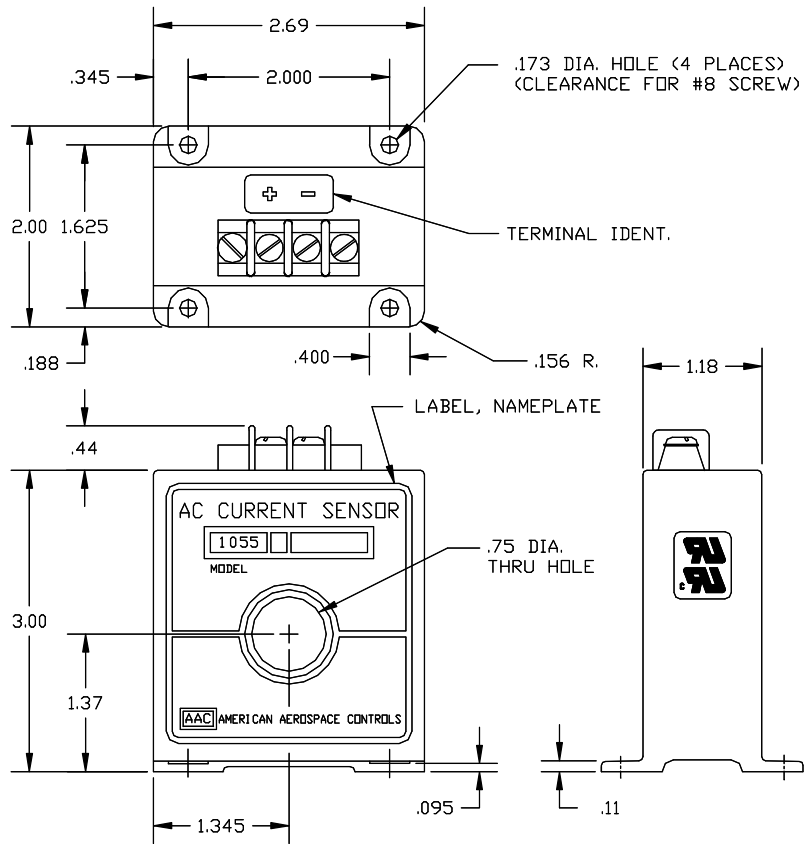


Dimensions in Inches, Tolerances: .XX ± .03 .XXX ± .010

Cross References to Rockwell Part # PN-130940

**TERMINAL IDENTIFICATION**

1. OUTPUT (+)
2. OUTPUT (RTN)



**AC CURRENT TRANSDUCER  
MODEL 1055  
4 TO 20mA 2 WIRE LOOP OPERATION**

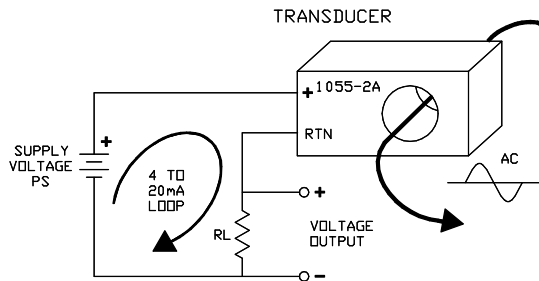
PART NO.	INPUT RANGE	PART NO.	INPUT RANGE
1055-2	0 to 2Aac	1055-50	0 to 50Aac
1055-5	0 to 5Aac	1055-75	0 to 75Aac
1055-10	0 to 10Aac	1055-100	0 to 100Aac
1055-15	0 to 15Aac	1055-125	0 to 125Aac
1055-20	0 to 20Aac	1055-150	0 to 150Aac
1055-25	0 to 25Aac	1055-200	0 to 200Aac
1055-30	0 to 30Aac	1055-250	0 to 250Aac
1055-40	0 to 40Aac	1055-300	0 to 300Aac

**INPUT RANGE** ..... Aac See Table  
**FREQUENCY** ..... 50 to 60 Hz  
**OVERLOAD CONTINUOUS** ..... 500Aac  
**OVERLOAD TRANSIENT** ..... 10 Times Range For 250m-sec.

**OUTPUT CURRENT SIGNAL** ..... 4 to 20mAac FS (Full Scale)  
**ACCURACY** ..... ±0.5% FS or ±0.1mA max. (Over Temperature Range)  
**RIPPLE** ..... 10mV RMS max.  
**RESPONSE (10 to 90%)** ..... 100ms max.  
**LOAD RESISTANCE (RL)** ..... 250 Ohms Nominal  
**LOAD RESISTANCE RANGE** ..... 0 to 1400 Ohms (See Note)  
**CURRENT SIGNAL @ OVERLOAD** ..... 30mA TYP.  
**PROTECTION** ..... Reverse Polarity Protected

**POWER SUPPLY (PS)**  
**SUPPLY VOLTAGE** ..... 15Vdc Nominal  
**CURRENT DRAIN** ..... 20mA  
**SUPPLY VOLTAGE RANGE** ..... 5 to 35Vdc

**ENVIRONMENTAL AND PHYSICAL CHARACTERISTICS**  
**OPERATING TEMPERATURE RANGE** ..... -20° to +85°C  
**STORAGE TEMPERATURE RANGE** ..... -40° to +85°C  
**ISOLATION** ..... Input/Output/Case  
**INSULATION RESISTANCE** ..... 200 M-Ohms @ 500Vdc  
**INPUT CONDUCTOR VOLTAGE** ..... 1.5KV max. (5KV max. with insulated cable)  
**WEIGHT** ..... 10 oz. Max.



**NOTE:**  
 MINIMUM DC SUPPLY VOLTAGE =  $V_x + .02 (RL)$   
 RL = ANY VALUE BETWEEN 0 AND 1400 OHMS.  
 $V_x = 7V$  FOR P/N 1055-2 AND 1055-5  
 $V_x = 5V$  FOR P/N 1055-10 THRU 1055-250

**TERMINAL SCREWS:**  
 5-40 SCREWS, 3/8" CENTER TO CENTER  
 SPACING ACCEPTS WIRE SIZES UP TO 14 AWG.  
 AND WIRE LUGS UP TO 9/32 WIDE.



UL RECOGNIZED CSA RECOGNIZED

<b>AAC</b>	<b>Drawing Number 700-1055</b>	<b>Rev. H</b>
------------	------------------------------------	-------------------