

# CROSS REFERENCE TO ROCKWELL PART NUMBER PP307

## Ground Fault Model GFM (Sensor) 1.5 to 65 Amp Trip Currents

### OPERATING RANGE:

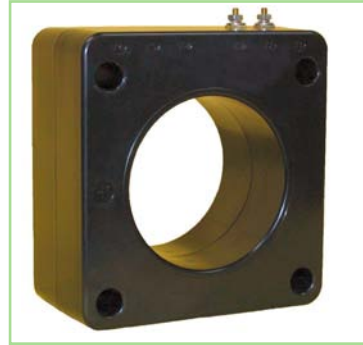
Trip currents from  
1.5-7.5 to 15 - 65 Amperes.

### INSULATION LEVEL:

600 Volt, 10 kV BIL full wave.  
Terminals are brass studs  
No. 8-32.

### FREQUENCY: 50/60 Hz.

Only for use with GFM relays.



TOROIDAL SENSORS



RECTANGULAR SENSORS

- Ground Fault Current Sensors type **GFM**, are available in three different case styles, a variety of sizes and trip current ranges - to match the **GFM** Relay. The physical size of the sensor window should be carefully determined by the physical size and configuration of the power conductors. The Ground Fault Sensor will respond only to ground faults which occur between the position of the sensor and the load.

MODEL NUMBER	TRIP CURRENT	SENSOR DIMENSIONS					
		"A1"	"A2"	"A3"	"B1"	"B2"	"B3"
GFM 094	2.0 TO 8.5	0.94	N/A	2.67	N/A	2.75	2.38
GFM 125	2.7 TO 14	1.25	N/A	2.67	N/A	2.75	2.38
GFM 156	4.5 TO 18	1.56	N/A	3.53	N/A	3.77	2.15
GFM 200	3.5 TO 14.5	2.00	3.19	4.00	N/A	4.00	1.75
GFM 250	3.5 TO 11	2.50	3.75	4.63	N/A	5.10	3.00
GFM 350	4 TO 12	3.75	4.75	5.96	4.75	6.31	3.00
GFM 375D	*	3.75	4.75	5.96	4.75	6.31	3.00
GFM 425	5 TO 18	4.25	5.44	6.73	5.43	6.73	1.28
GFM 462	4 TO 12	4.62	5.75	7.00	5.75	7.12	4.00
GFM 813	4 TO 12	8.13	8.50	11.10	8.50	11.47	3.00

\*Dual trip current ranges 3.5 to 11 and 10 to 36.

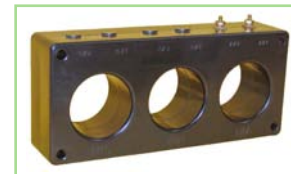
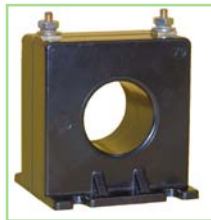
MODEL NUMBER	TRIP CURRENT	SENSOR DIMENSIONS					
		"A1"	"A2"	"A3"	"B1"	"B2"	"B3"
GFM 041 X 071	6 TO 30	4.1	6.4	7.3	7.1	10.0	10.9
* GFM 080 X 117SC	15 TO 65	8.0	9.5	11.1	11.7	14.5	15.4
GFM 080 X 141	9 TO 39	8.0	9.5	11.1	14.1	17.0	17.9

\* Model **GFM 080 X 117SC** is split core (take-apart style) for assembly to existing electrical installations without the need for dismantling the primary bus or cables.

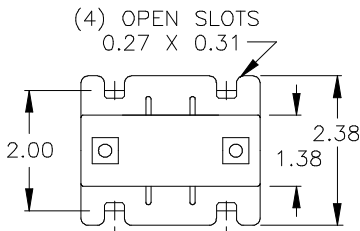
### CAUTION:

Proper safety precautions must be followed during installation by a trained electrician. It is recommended that the incoming power de-energized before installation. The sensor must have its secondary terminals short circuited or the relay connected, before energizing the primary circuit.

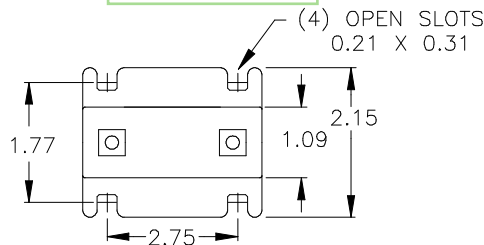
Mounting bracket kits are available for all toroidal sensors except the Model GFM 094, GFM 125, and GFM 156, which have molded mounting feet.



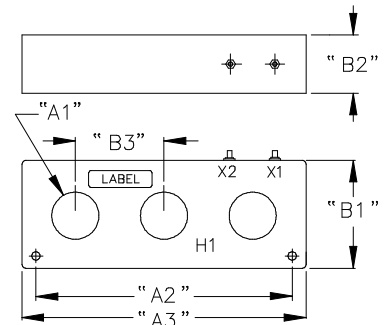
3 HOLE SENSORS



GFM 094  
GFM 125



GFM 156



MODEL NUMBER	BRACKET KIT
GFM 200	0221B01976
GFM 250	0221B00541
GFM 375	0221B00259
GFM 375D	0221B00259
GFM 425	0221B00187
GFM 462	0221B01525
GFM 813	0221B00259

MODEL NUMBER	TRIP CURRENT	SENSOR DIMENSIONS					
		"A1"	"A2"	"A3"	"B1"	"B2"	"B3"
GFM 3P205 X 050	4.5 TO 16	*	7.60	8.50	3.70	2.00	2.75
GFM 3P208	5 TO 20	2.08	8.24	9.00	3.94	2.00	2.75
GFM 3P212	7 TO 25	2.12	11.72	12.80	4.87	2.63	4.00

\* The Model GFM 3P205 X 050 has a rectangle window 2.05 " X 0.50".

USA, Canada, Asia, Latin America

Tel: +1-800-547-8629

Fax: +1-905-201-2455

e-mail: [sales.multilin@ge.com](mailto:sales.multilin@ge.com)

Europe, Middle East, Africa

Tel: +34-94-485-88-00

Fax: +34-94-485-88-45

e-mail: [gemultilin.euro@ge.com](mailto:gemultilin.euro@ge.com)