



**Instrument Transformers, Inc.**

a division of GE Multilin



# 3 Phase Voltage Transformer Model 2VT460

REGULATORY AGENCY APPROVALS

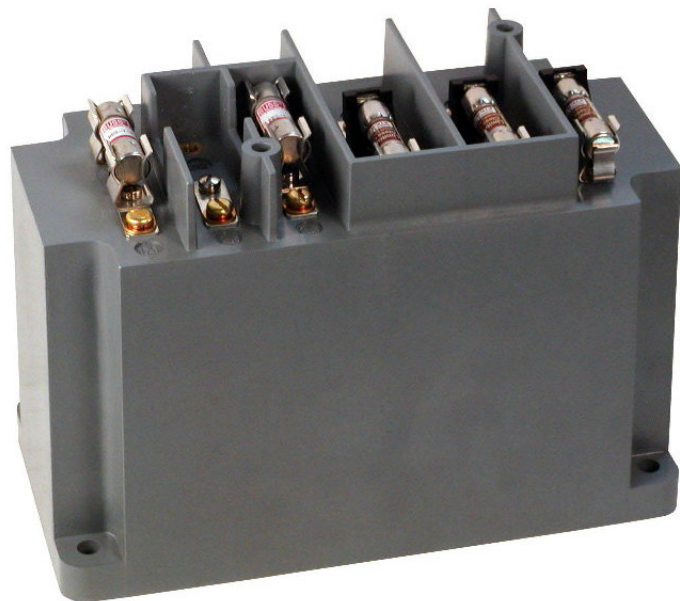


E93779



LR89403

Manufactured to meet the requirements of ANSI/IEEE C57.13.  
Classified by U.L. in accordance with IEC 44-1



**FREQUENCY:**  
60 Hz.

**STANDARD SECONDARY VOLTAGE:**  
120 Volts

**INSULATION LEVEL:**  
600 Volt, 10 kV BIL full wave.

**ACCURACY CLASS: (Per Phase)**  
0.6 W, 1.2 X

**THERMAL RATING: (Per Phase)**  
150 VA at 30°C. amb., 100 VA at 55°C. amb.

Terminals are brass screws No. 8-32 with one lockwasher and flatwasher.

Approximate weight 15.5 lbs.



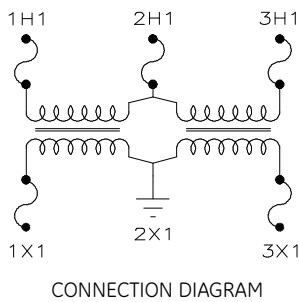
Clear Plastic Cover

CATALOG NUMBER		VOLTAGE RATING	TURNS RATIO	REC. PRIMARY FUSE RATING
PRIMARY FUSES ONLY	PRIMARY AND SECONDARY FUSES			
2VT460-069F	2VT460-069FF	69.3:120	0.58:1	5.0
2VT460-120F	2VT460-120FF	120:120	1:1	4.0
2VT460-208F	2VT460-208FF	208:120	1.73:1	2.0
2VT460-240F	2VT460-240FF	240:120	2:1	2.0
2VT460-288F	2VT460-288FF	288:120	2.4:1	1.5
2VT460-300F	2VT460-300FF	300:120	2.5:1	1.5
2VT460-480F	2VT460-480FF	480:120	4:1	1.0
2VT460-600F	2VT460-600FF	600:120	5:1	0.75

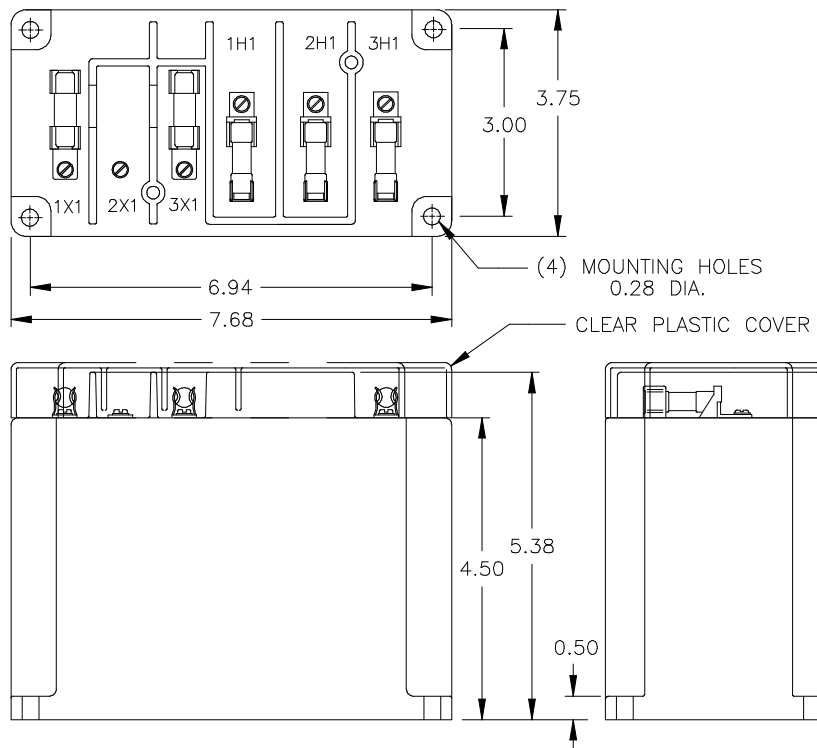
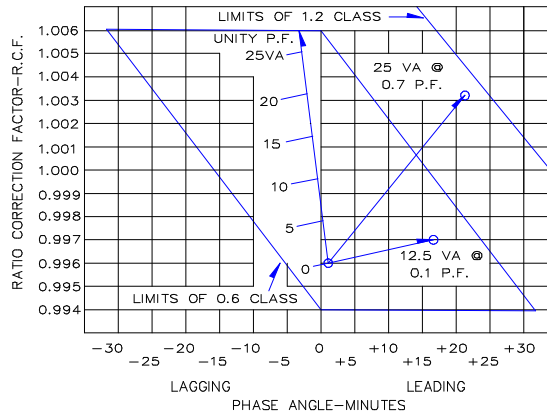


# Model 2VT460

- The core and coil assembly is encased in a thermoplastic shell and filled with resin.
- These transformers are designed for open delta connection.
- Primary fuses are type CC rejection style.
- Is is desirable to use a 1.6 amp BBS type or equal fuse in the secondary to protect the transformer.
- Models designed specifically for 50Hz operation are available with reduced performance. Consult factory for details.
- This page contains a circle diagram for the estimation of the errors or other than rated burdens. See page 27 in this section for a description of its use.



VOLTAGE TRANSFORMER CIRCLE DIAGRAM  
THIS GRAPH IS DRAWN FOR A 60HZ 0.6 P.F. SYSTEM LOAD



USA, Canada, Asia, Latin America

Tel: +1-800-547-8629

Fax: +1-905-201-2455

e-mail: [sales.multilin@ge.com](mailto:sales.multilin@ge.com)

Europe, Middle East, Africa

Tel: +34-94-485-88-00

Fax: +34-94-485-88-45

e-mail: [gmultilin.euro@ge.com](mailto:gmultilin.euro@ge.com)