



Hammond Power Solutions Inc.

TITLE: 3PH MOTOR STARTING AUTO TRANSFORMER
NAMEPLATE INFORMATION

				DES: GPATEL
				DATE: 06/05/01
NO.	DATE	BY	REVISION	SCALE: NTS

SHEET 1 OF 2

EDB285102600

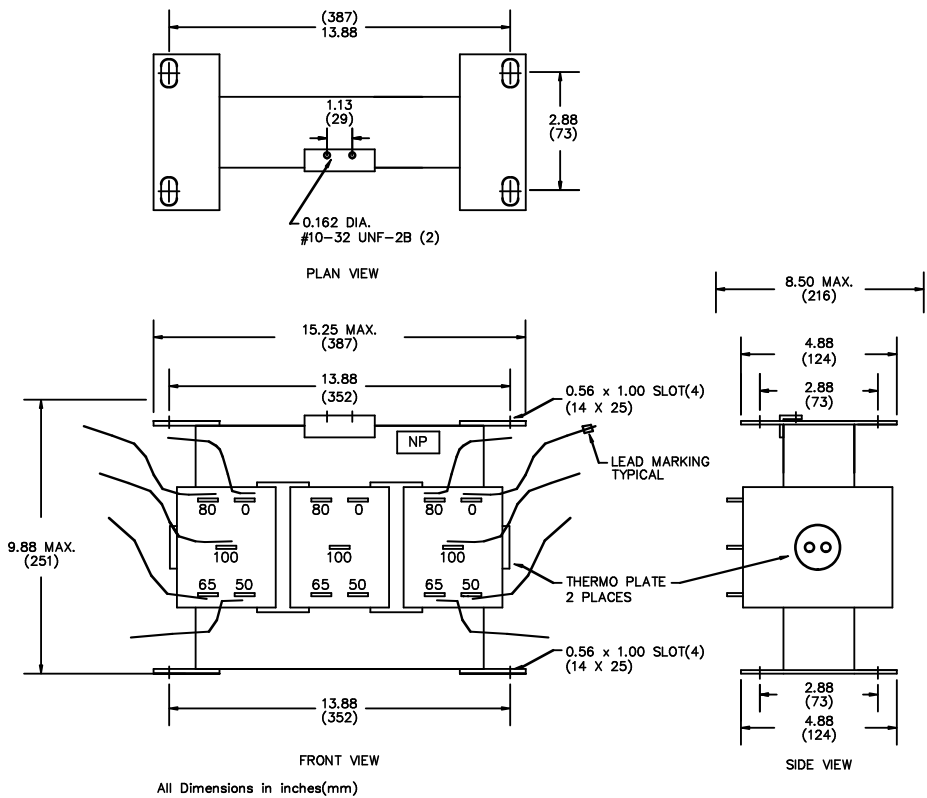
0.1 jwen 2009/08/12 21:25

MOTOR STARTING AUTOTRANSFORMER	
PART NO.	TYPE
X289372	NE
ALLEN BRADLEY MILWAUKEE, WIS USA	

RU® E61431

LR3902
TYPE J





CUSTOMER NOTES:

ALL TERMINALS TO HAVE LEADS
 0% & 100% HAVE #4 36" LONG
 50%, 65% & 80% HAVE #4 8" LONG



Hammond Power Solutions Inc.

TITLE: 3PH MOTOR STARTING AUTO TRANSFORMER

				DES: GPATEL
				DATE: 06/05/01
NO.	DATE	BY	REVISION	SCALE: NTS

SHEET 2 OF 2

EDB285102600

0.1 jwen 2009/08/12 21:25